

JssP

Safe Community Network News

By Japanese Society of Safety Promotion

TOPICS Vol.0118 1st Aug 2009

1. A series of public lecture for safety of the citizens
2. Astugi: Appointment of a pilot area for Safe Community and Work Shop
3. Introduction; Japanese program for safety promotion.

Safe Community Network News
Vol.018. 1st Aug. 2009
Japanese Society of Safety Promotion
Responsible Editor: Naoya Hatta
E-mail:safetyprom@yahoo.co.jp

1. A series of public lecture for safety of the citizens

12th.July 2009, a series of public lecture for safety of the citizens was held at Yokohama Health and Welfare Center. Three board member of Japanese Society of Safety Promotion (JssP) gave a lecture on the citizens and related persons such as a government employee, a fire fighter, a public nurse and so on..

Mr.Isamu Yamauchi (Kameoka City Government), Dr.Yoko Shiraishi (Mature Life Institute, Ristumeikan University) told about an opportunity and a background Kmaeoka has started activities for Safe Community, and a result of activities.

Mr. Takashi Kuramochi (Astugi City Government) told about activities that Astugi has been conducting for Safety Promotion.

These lecture showed a process and activities very simply. These were valuable lectures for a person and community which are interested in Safe Community.

In addition to that, we could spread the concept of Safe Community into people who are working for safety. (By Mr.Isamu Yamauchi)



Mr.Isamu Yamauchi



Dr.Yoko Shiraishi



Mr.Takashi Kuramochi

2. Astugi: Appointment of a pilot area for Safe Community and Brainstorming meeting

Astugi City Government is appointing a pilot area in order to spread Safe Community steadily into all over city. Four communities have been appointed as a pilot area until last August.

These communities have already started activities for Safe Community. At first, they held a brainstorming meeting to discuss about problems in their each community. It is very important to understand a problem which threatens their safety.

They are checking their area though discussing at the meeting, and then they will be able to find problems they should improve for their safety.

In other hand, to correct data for checking their community objectively, they need to survey various statistics, such as population movement, traffic accident so on. Moreover, a questionnaire survey will be also carried out, in order to see the resident's feeling of safety and the recent state of injury in their area.

These surveys will make their problem clear, and lead them to effective movement toward Safe Community.



Brainstorming meeting

JssP

Safe Community Network News

By Japanese Society of Safety Promotion

Introduction: Japanese Program for Safety Promotion

Mapping Traffic accidents and Traffic Accident Dangerous Place

In order to prevent traffic accident, it is important to know where accidents occur frequently. Therefore, the Kyoto police headquarters make maps, which show where traffic accidents tend to occur frequently. (Fig.)

The maps are uploaded on their website so that anyone can access to the map, and print it out. The maps can be used to traffic accident prevention activities at community levels as well as individual level.

Beside the maps shown at fig, there are other kinds of maps which show types and times of accidents.

In other hands, to prevent traffic accidents effectively, National and Local Government appoint the place lots of traffic accidents happened to "Traffic Accident Dangerous Place".

Traffic accidents tend to occur frequently at the same place. Therefore National Government and Local Government survey the place traffic accident happened every year with the police, and record the data.

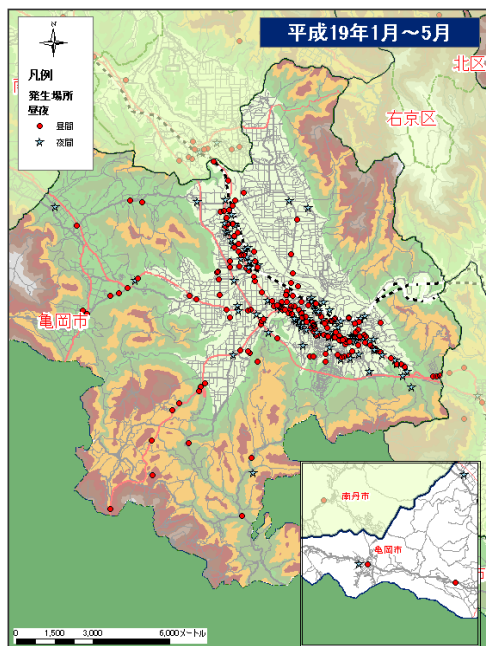
And then they add up the date of five years, and appoint the place traffic accidents happened frequently to Traffic Accidents Dangerous Place.

Traffic Accidents Dangerous Place is appointed once five years, and five years aim about a decrease of accidents is set. To achieve the aim, various way of traffic accidents prevention is carried out by Government (Manager of the road) and the police at Traffic Accidents Dangerous Place.

Example of traffic accident prevention

Government (Manager of the road)	Police
<ul style="list-style-type: none"> -Improvement of a closing (Right turn lane, Improvement of closing angle so on). -Lightings and delineators -Road line, traffic sign -Sidewalk, Bicycle lane. -Drainage pavement so on -Improvement of sight distance 	<ul style="list-style-type: none"> -Traffic light -Traffic sign -Traffic control -Control of traffic offense

Figure:a map of traffic accidents in Kameoka



Example of Improvement of Dangerous Place. Sidewalk was built on a rail closing

Before improving

After improving

