

JssP

Safe Community Network News

By Japanese Society of Safety Promotion

TOPICS Vol.013 1st March 2009 Vol.014 1st April 2009

1. Kameoka; Shino-Town S-Map Project
2. Atsugi; Symposium for developing safe community
3. Towada; Meeting for reporting a result of injury surveillance
4. Kyoto; Study-visit from Korea

Safe Community Network News
Vol.013-014 1st April. 2009
Japanese Society of Safety Promotion
Responsible Editor: Naoya Hatta
E-mail:safetyprom@yahoo.co.jp

1. Kameoka City; Shino-Twon S-Map Project

“S-Map Project”, which makes a map plotted dangerous places by residents, was carried out on 17th January 2009 on Shino Town.

This project is that residents make sure dangerous place of crimes and natural disaster themselves, and plot them on a map. The map will be used for rising safety awareness of residents and improving an environment in their town

This projects characteristic is that some group consist of all age bracket walk around their town, and watch dangerous place which happen traffic accidents or natural disaster so on. They also check barrier-free on public place. Dangerous places they found is plotted with specified mark. Places they feel danger are different among each age group. The elderly don't always feel a place children feel danger to be danger for them. So the group can find dangerous places for all age group through walking with other age people.



Town Watch: field work



Moreover there are other merits on this project. Residents can work for generational exchange among all age group through walking around their town. And they also can see a history and new beautiful scenery, a sightseeing spot they have not found in their town before.

On the walking day, 250 residents joined in this project. They seem not to be friendly at first because of their first meeting, but the conversation in the group became to grew animated at time goes on. And they were plotting dangerous place with the conversation such as “What is that?” ”It's first time to see such beautiful scenery in the neighborhood” ”A wheelchair can not go alone on this side walk, can it?” ”A traffic accident has happened on this closing last summer”

After walking, the maps were completed at the workshop and discussed about countermeasures. Regarding an improvement of closing and road facility so on, they are going to ask government to improve safety and barrier free. Regarding what they can do themselves, they are going to do themselves.



Work Shop: Making a map

The map each group has made will be converted to the digital map by GIS technology in cooperation with Ritsumeikan University.

The digital map will be updated on the website to make dangerous place known to all residents.

2. Atsugi City; Symposium for developing safe and active city

Symposium for developing a safe and active city titled “Safe Community; Safety and Health developed by a collaboration with residents“ was held on 14th February 2009 in Atsugi welfare center. In this symposium, Prof. Joon Pil Cho (Chair, Certifying Center for Safe Community in Asian Region, Center for Injury Prevention and Community Safety Promotion Ajou University

JssP

Safe Community Network News

By Japanese Society of Safety Promotion

School of Medicine, Suwon, Korea), Prof. Lu Pai (Director, Taiwanese Community safety Promotion Center. Vice Chair, Asia Region Safe Community Network. Asso Prof. Institute of Injury Prevention and Control, Taipei medical University), Prof. Shumei Wan (School of Public Health, Fudan University, Shanghai, China) were invited to present.

The symposium was started from a greeting of Mayor Tsuneyoshi Kobayashi in a heated atmosphere by about 250 audiences.

Mayor Kobayashi went up on the stage with Safe Vest that is symbolic of activities for safe community in Atsugi City. He said one year just has gone by from Atsugi started activities for safe community. And he talked to residents about his passion that it is very important to build a relationship of mutual trust among peoples and to have issues in common, in order to developing safe community.



Mayor Kobayashi with Safe Vest

After greeting of Mayor, Prof Joon Pil Cho gave us a presentation titled “Strategy for successful for Safe Community Project”. Prof. Cho explained us about meaning of designation as safe community, six indicators and requirements to meet six indicators, in order to become a member of international Safe Community. And Prof. Cho suggested us several key factors for successful Safe Community program. Showing a few key factors, one is “Identify injury problem within a community by injury surveillance”. Second is “Raising public awareness showing injury problem within a community”. Third is “Collaboration with all sort of health and welfare sector” so on. All key factors he suggested are very important thing for successful Safe Community program. I think most people in the symposium could understand the important thing he said, because his presentation was very easy to understand these key factors.



Next, Prof. Lu Pai gave presentation titled “Safe Community Development and Injury Surveillance on the suite local circumstance”. Her presentation attracted my interest, because ways of injury surveillance and evaluation were explained with showing experiences of injury surveillance in Taiwan. Objective injury data, identifying injury problem within community and evaluation by injury data, these factors were indispensable to be succeeded Safe Community program as Prof. Cho presentation. In her presentation, a practical way of injury surveillance was suggested easily, so I’m sure most people could get some idea for surveillance.

The last presenter was Prof. Shumei Wang. Presentation titled “Safe Community in China and Education Strategy” showed us a current situation and projects of Safe Community on mainland China. Prof. Wang told us that most important thing for successful Safe Community program is education. To develop more as Safe Community, it is necessary to change resident’s awareness and behavior. She emphasized most effective way to do that is the education.



Party after symposium to build good human relations

This symposium also was held for education surely. What tree experts in Asia suggested must help their activities to become a member of international Safe Community in future. I actually participated in this symposium. Aspect of people who were listening attentively three presentations really impressed me. I hope surely that their awareness for safety will be raised more, and their behavior also will be changed through such symposium.

JssP

Safe Community Network News

By Japanese Society of Safety Promotion

3. Towada City: Meeting for reporting a result of injury surveillance

Meeting for reporting a result of injury surveillance was held in 23rd January 2009 in Towada public health center

The result of injury surveillance that was carried out to get data of causes and frequency of injury by Towada City Government and Aomori University of Health and Welfare last year was reported in this meeting. Awareness of safety was also surveyed in this surveillance. This surveillance was carried out as questionnaire survey, 467 answers of 596 households were collected. And Aomori University of Health and Welfare analyzed the data and reported the result to member of working group.

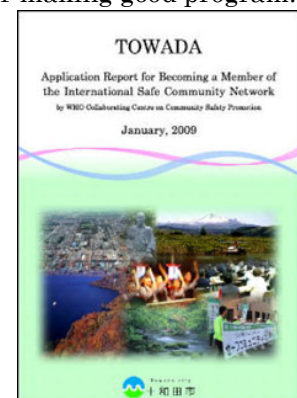
They could get data of 1314 persons on 467 household. Regarding injury data, 105 persons of 1314 persons have got injured and gone to hospital in last one year. In the report, it was said the result the largest number of cause was “fall”, second was traffic accidents. It

was made clear there is regional difference on awareness of safety, such as a state of setting up a fire alarm. It is very important to make good use of the result of analyze for making good program.

After that, Dr. Yoshihide Sorimachi who is director of Kmitosan Public Health Center reported about a general situation and priority of injury in Towada. And then Ms. Yoko Niyama who is director of department of health and welfare Towada City government reported about long term and sustainable program for safety promotion

+++Big News+++

Towada City has submitted application to become a member of international safe community on 8th January 2009. and finished official site-visit on 25th – 26th March 2009. I was heard the result of site-visit was done well. We are looking forward to becoming the second member of international safe community.



4. Graduate students in Korea visited Kyoto to study a bicycle road

Three graduate students of Yeungnam University Korea visited Kyoto Prefectural Government to study a bicycle road in Japan on 5th February 2009.

As I actually work for road safety at Road Management Division Kyoto Prefectural Government as a civil engineer, I received visitors and told the bicycle road in Japan to them.

Three graduate students who major in psychology visited Japan to study a situation and a construction standard, a rule and law of a road bicycle. They are considering to proposal a practical project for a mental health care by cycling.

They said that increasing suicide is big social problem in Korea, so they would like to stop it.

They had another purpose that is a touring around west Japan by bicycle. Actually they had arrived at Fukuoka on 27th January by ferry boat with their bicycle. After leaving Fukuoka, they moved to Hiroshima, Matsuyama, Takamatsu, Kobe and Kyoto in turn. On the way to Kyoto they saw each local bicycle road and visit some city centers to interview about a bicycle road.



JssP

Safe Community Network News

By Japanese Society of Safety Promotion

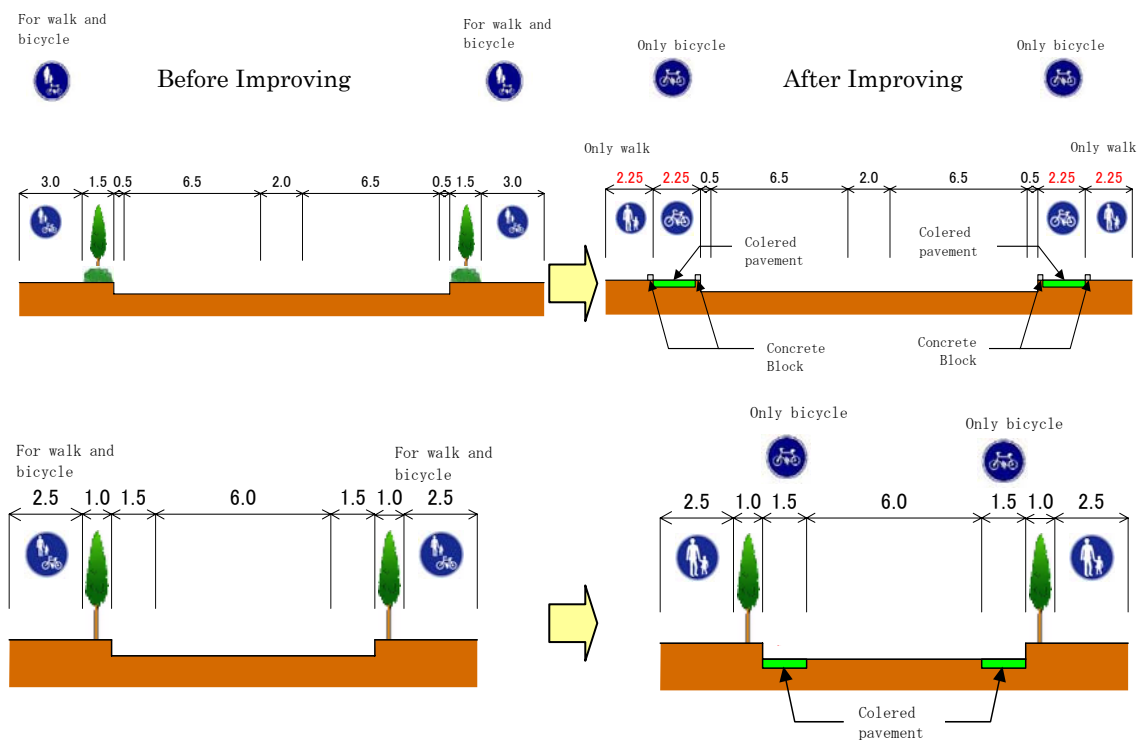
In interview at Kyoto prefecture office, we explain them about a situation of constructing bicycle road in Kyoto, a background and purpose of Japanese construction of bicycle road, a standard structure, rule and law related construction of bicycle road and bicycle parking area. After our explanation, we discussed about bicycle road. What they showed a strong interest were the structure of bicycle road, planning and a parking fee of a bicycle parking area. Especially the rental bicycle system with construction of bicycle road around sightseeing spot.

Recently Japanese National Government focus on the construction of environment for bicycle safety, the construction of a bicycle lane on the road is promoted. This is a strategy to try to change a short distance transportation from a car to bicycle, in order to ease traffic congestion and prevent global warming. In other hand, a number of bicycle accidents tend to increase year by year in Japan, it is urgently necessary for urban area to construct a safe bicycle road.

In such situation, a cause is deferent between them and us, but a goal is same. We hope they will propose nice idea for construction of safe bicycle road, and put the idea into practice.

After interview, we invited them to have dinner at “Japanese Izakaya Restran”, we had very happy time together.

+++++Improvement of Bicycle Lane+++++



+++++Photo of Bicycle Lane+++++

