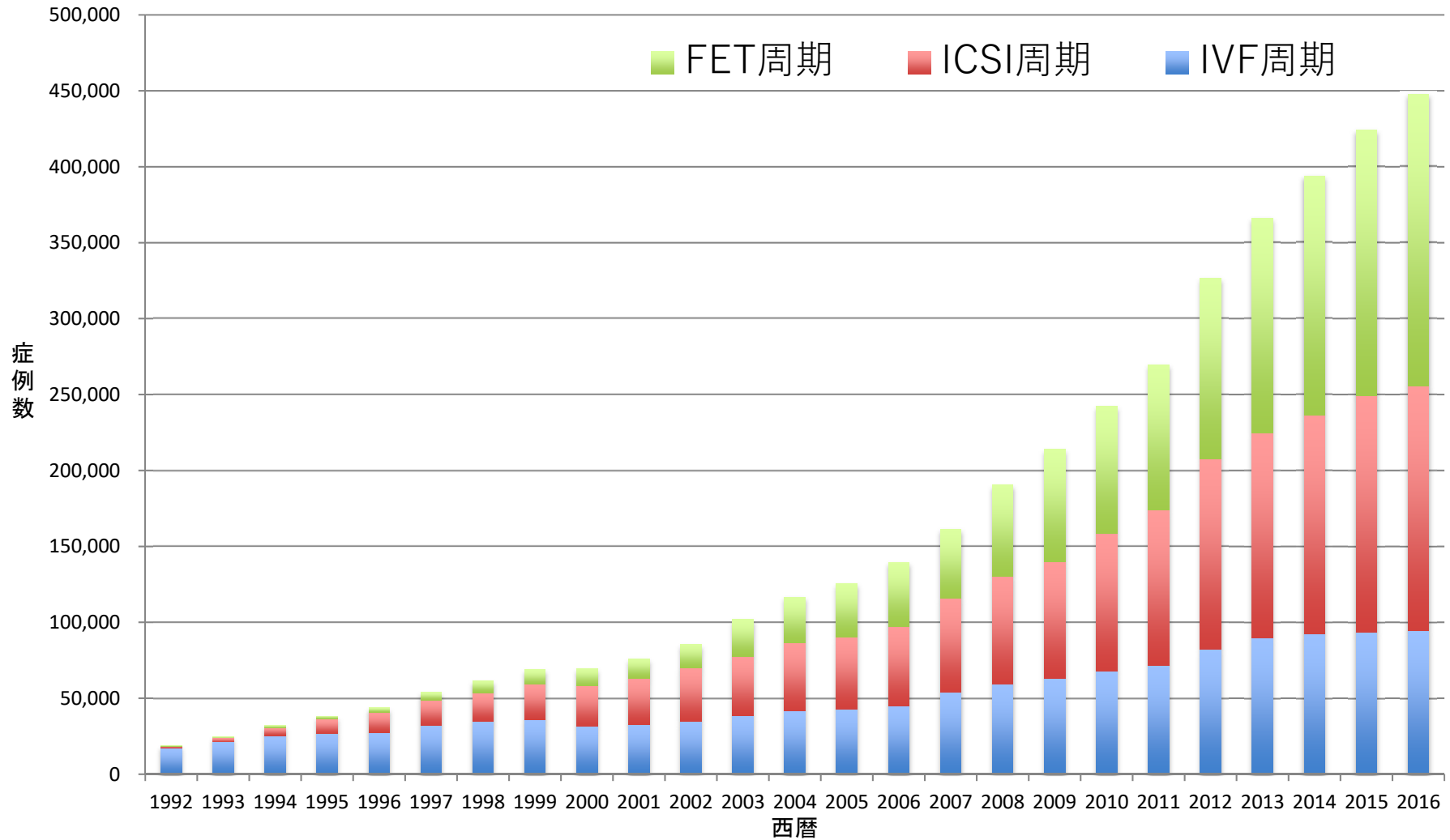
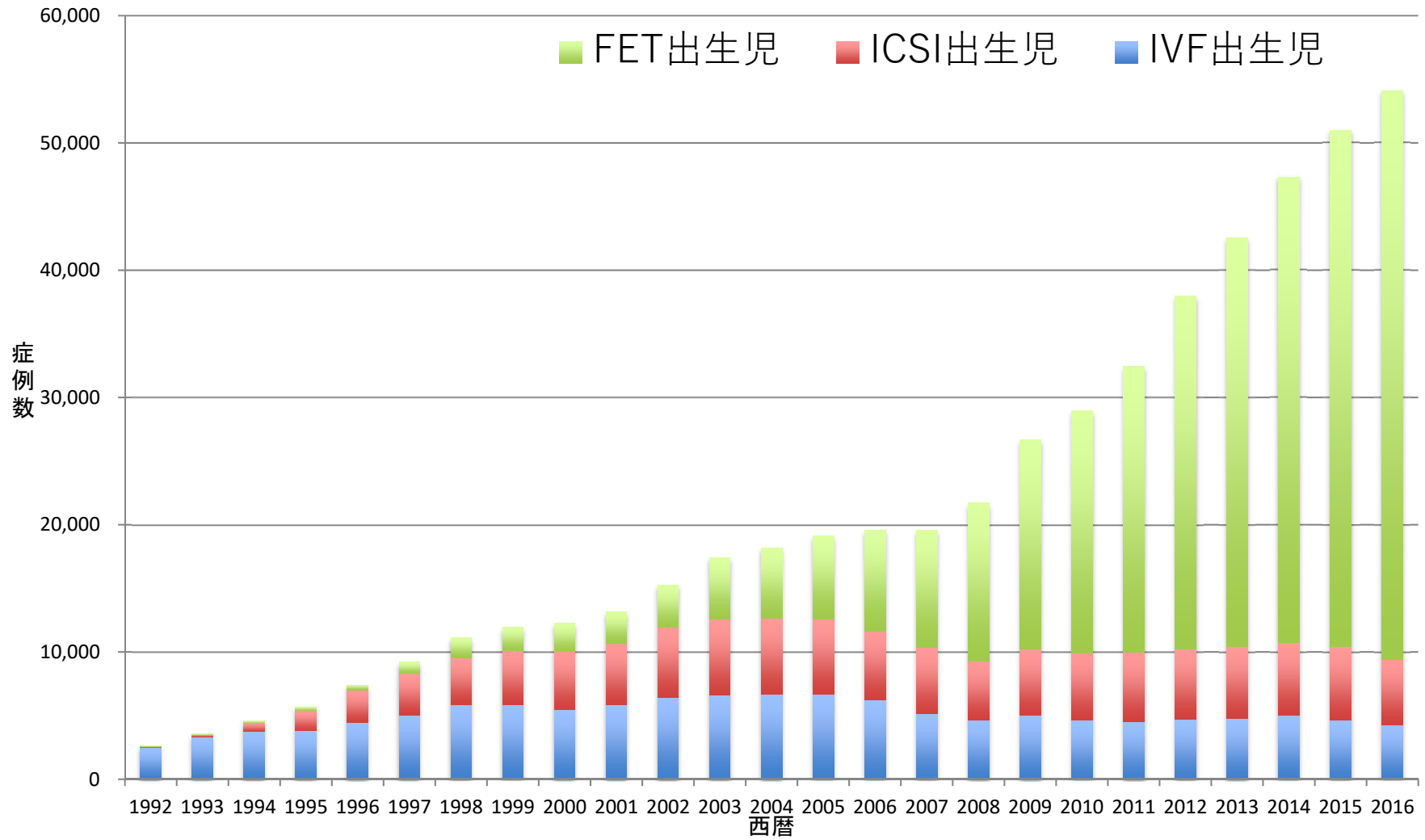


年別 治療周期数



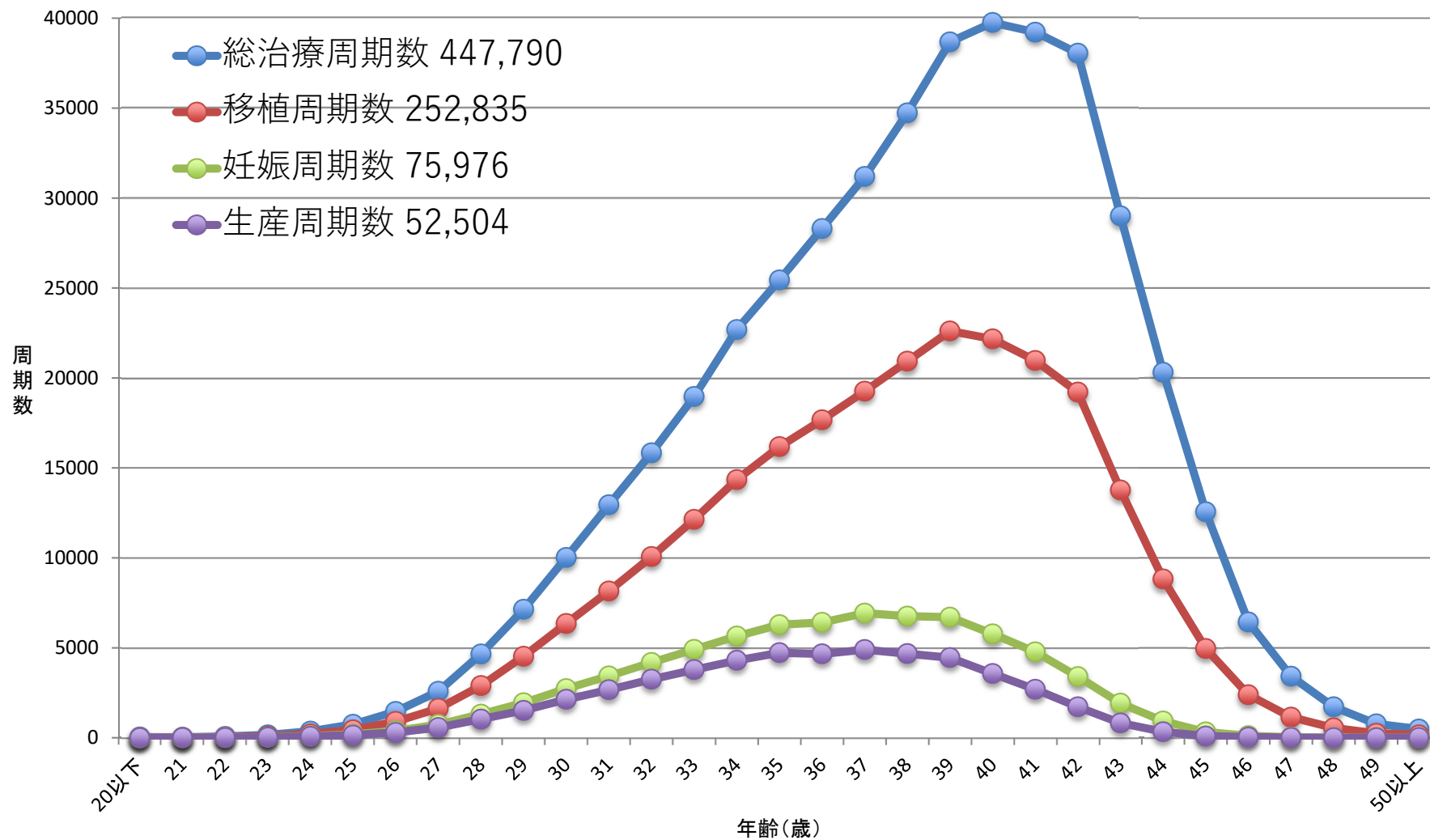
年別 出生児数



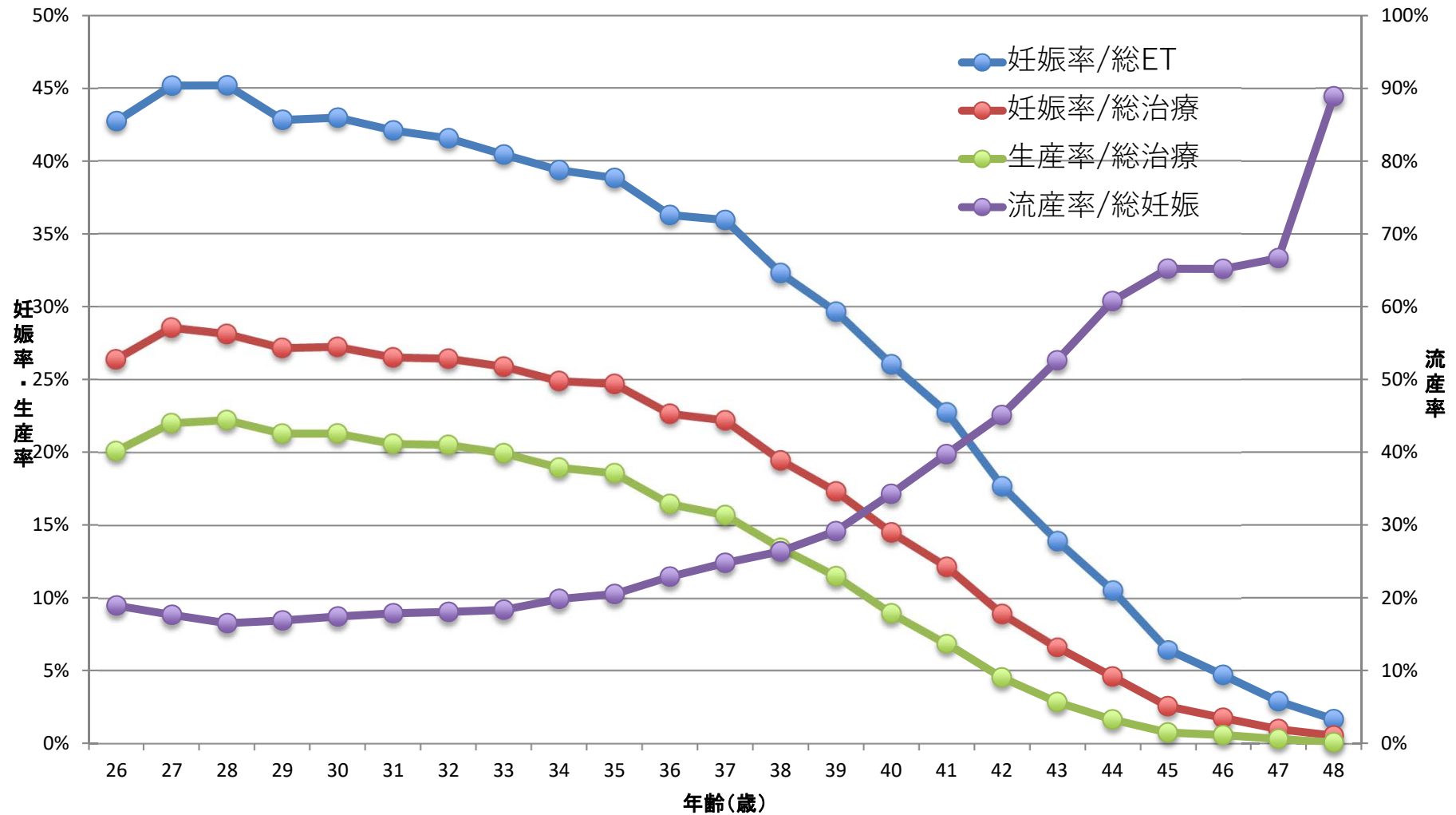
年別 周期数

西暦	IVF (GIFT,その他を含む)						ICSI (SPLITを含む)						凍結融解胚 (卵)			
	治療周期数	採卵周期数	全凍結周期	移植周期数	妊娠周期数	出生児数	治療周期数	採卵周期数	全凍結周期	移植周期数	妊娠周期数	出生児数	治療周期数	移植周期数	妊娠周期数	出生児数
1985	1,195	1,195		862	64	27										
1986	752	752		556	56	16										
1987	1,503	1,503		1,070	135	54										
1988	1,702	1,702		1,665	257	114										
1989	4,218	3,890		2,968	580	446							184	92	7	3
1990	7,405	6,892		5,361	1,178	1,031							160	153	17	17
1991	11,177	10,581		8,473	2,015	1,661							369	352	57	39
1992	17,404	16,381		12,250	2,702	2,525	963	936		524	42	35	553	530	79	66
1993	21,287	20,345		15,565	3,730	3,334	2,608	2,447		1,271	176	149	681	597	86	71
1994	25,157	24,033		18,690	4,069	3,734	5,510	5,339		4,114	759	698	1,303	1,112	179	144
1995	26,648	24,694		18,905	4,246	3,810	9,820	9,054		7,722	1,732	1,579	1,682	1,426	323	298
1996	27,338	26,385		21,492	4,818	4,436	13,438	13,044		11,269	2,799	2,588	2,900	2,676	449	386
1997	32,247	30,733		24,768	5,730	5,060	16,573	16,376		14,275	3,495	3,249	5,208	4,958	1,086	902
1998	34,929	33,670		27,436	6,255	5,851	18,657	18,266		15,505	3,952	3,701	8,132	7,643	1,748	1,567
1999	36,085	34,290		27,455	6,812	5,870	22,984	22,350		18,592	4,702	4,247	9,950	9,093	2,198	1,812
2000	31,334	29,907		24,447	6,328	5,447	26,712	25,794		21,067	5,240	4,582	11,653	10,719	2,660	2,245
2001	32,676	31,051		25,143	6,749	5,829	30,369	29,309		23,058	5,924	4,862	13,034	11,888	3,080	2,467
2002	34,953	33,849		26,854	7,767	6,443	34,824	33,823		25,866	6,775	5,486	15,887	14,759	4,094	3,299
2003	38,575	36,480		28,214	8,336	6,608	38,871	36,663		27,895	7,506	5,994	24,459	19,641	6,205	4,798
2004	41,619	39,656		29,090	8,542	6,709	44,698	43,628		29,946	7,768	5,921	30,287	24,422	7,606	5,538
2005	42,822	40,471		29,337	8,893	6,706	47,579	45,388		30,983	8,019	5,864	35,069	28,743	9,396	6,542
2006	44,778	42,248		29,440	8,509	6,256	52,539	49,854		32,509	7,904	5,401	42,171	35,804	11,798	7,930
2007	53,873	52,165	7,626	28,228	7,416	5,144	61,813	60,294	11,541	34,032	7,784	5,194	45,478	43,589	13,965	9,257
2008	59,148	57,217	10,139	29,124	6,897	4,664	71,350	69,864	15,390	34,425	7,017	4,615	60,115	57,846	18,597	12,425
2009	63,083	60,754	11,800	28,559	6,891	5,046	76,790	75,340	19,046	35,167	7,330	5,180	73,927	71,367	23,216	16,454
2010	67,714	64,966	13,843	27,905	6,556	4,657	90,677	88,822	24,379	37,172	7,699	5,277	83,770	81,300	27,382	19,011
2011	71,422	68,651	16,202	27,284	6,341	4,546	102,473	100,518	30,773	38,098	7,601	5,415	95,764	92,782	31,721	22,465
2012	82,108	79,434	20,627	29,693	6,703	4,740	125,229	122,962	41,943	40,829	7,947	5,498	119,089	116,176	39,106	27,715
2013	89,950	87,104	25,085	30,164	6,817	4,776	134,871	134,871	49,316	41,150	8,027	5,630	141,335	138,249	45,392	32,148
2014	92,269	89,397	27,624	30,414	6,970	5,025	144,247	141,888	55,851	41,437	8,122	5,702	157,229	153,977	51,458	36,595
2015	93,614	91,079	30,498	28,858	6,478	4,629	155,797	153,639	63,660	41,396	8,169	5,761	174,740	171,495	56,888	40,611
2016	94,566	92,185	34,188	26,182	5,903	4,266	161,262	159,214	70,387	38,315	7,324	5,166	191,962	188,338	62,749	44,678

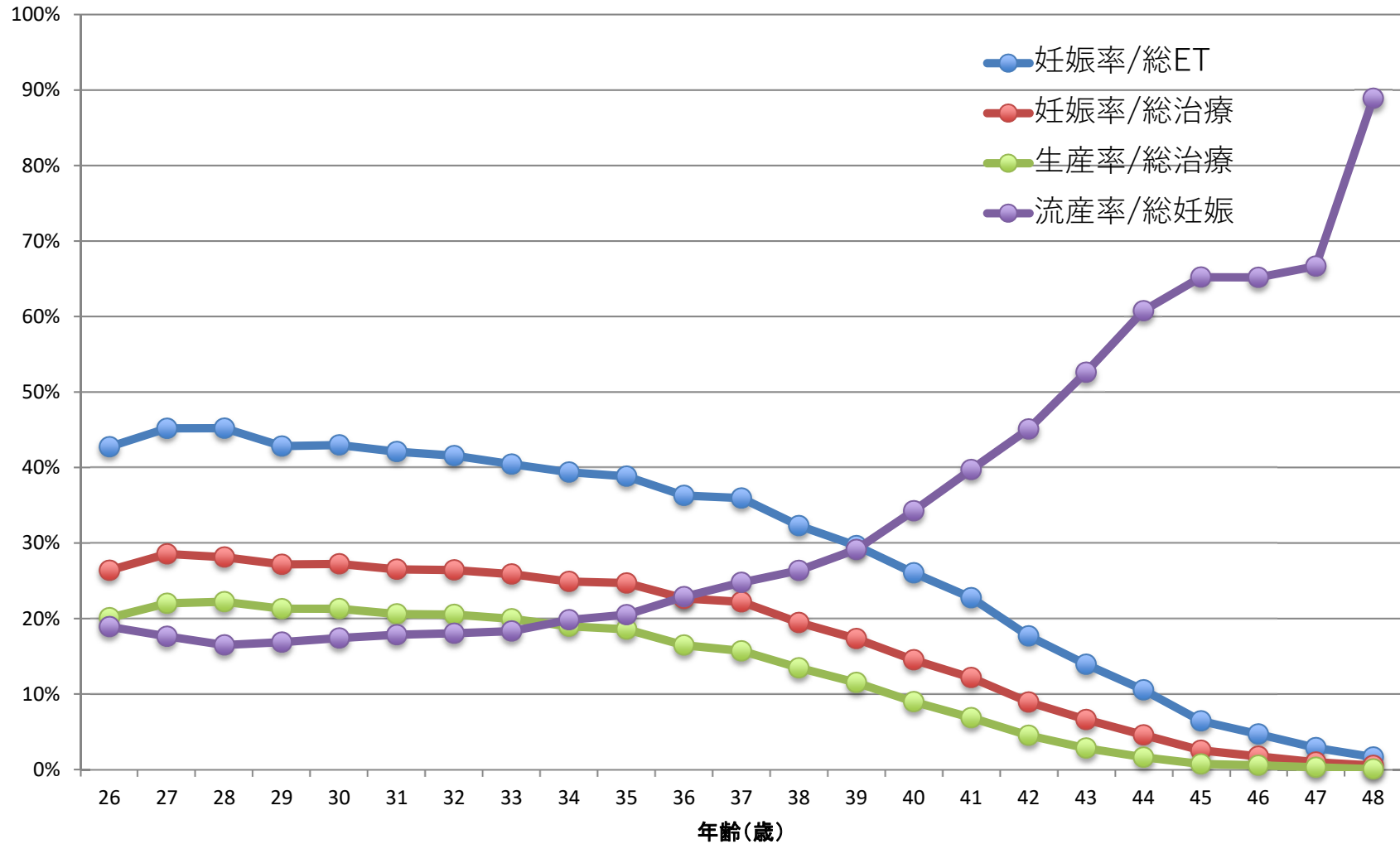
ART治療周期数 2016



ART妊娠率・生産率・流産率 2016



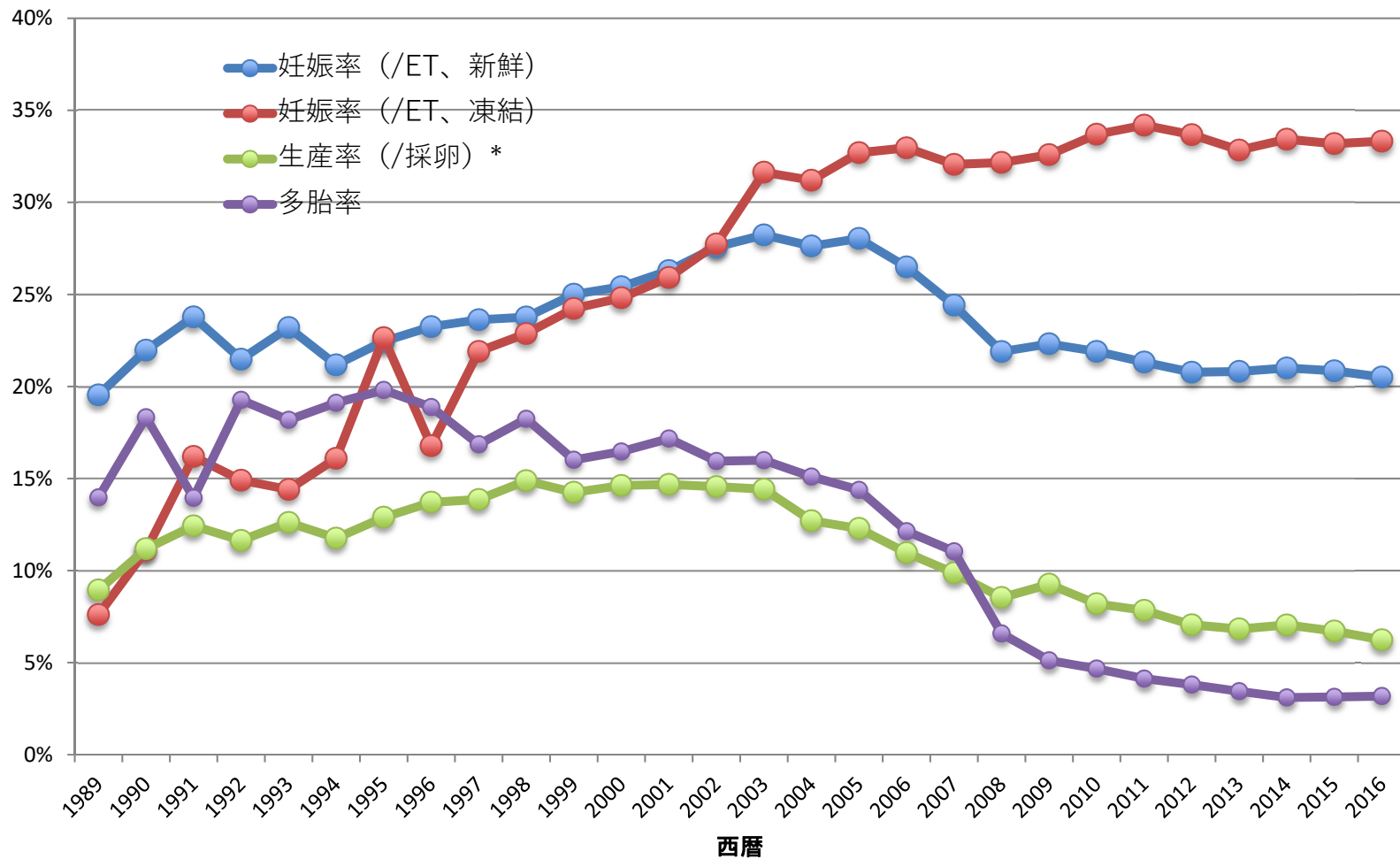
ART妊娠率・生産率・流産率 2016



2016

年齢	総治療周期数	移植周期数	妊娠周期数	生産周期数	流産数	妊娠率/総ET	妊娠率/総治療	生産率/総治療	流産率/総妊娠	多胎率
20歳以下	39	3	1	1	0	33.3%	2.6%	2.6%	0.0%	0.00%
21	29	13	6	4	2	46.2%	20.7%	13.8%	33.3%	0.00%
22	71	37	11	9	2	29.7%	15.5%	12.7%	18.2%	0.00%
23	160	86	37	32	4	43.0%	23.1%	20.0%	10.8%	0.00%
24	364	211	98	77	15	46.4%	26.9%	21.2%	15.3%	7.29%
25	748	440	189	143	37	43.0%	25.3%	19.1%	19.6%	3.78%
26	1,463	903	386	294	73	42.7%	26.4%	20.1%	18.9%	3.43%
27	2,581	1,631	737	568	130	45.2%	28.6%	22.0%	17.6%	3.44%
28	4,658	2,898	1,310	1,035	216	45.2%	28.1%	22.2%	16.5%	2.71%
29	7,139	4,527	1,939	1,520	327	42.8%	27.2%	21.3%	16.9%	2.99%
30	10,020	6,349	2,729	2,134	475	43.0%	27.2%	21.3%	17.4%	2.99%
31	12,951	8,156	3,434	2,667	613	42.1%	26.5%	20.6%	17.9%	2.90%
32	15,832	10,066	4,184	3,249	755	41.6%	26.4%	20.5%	18.0%	3.15%
33	18,966	12,138	4,909	3,784	900	40.4%	25.9%	20.0%	18.3%	3.08%
34	22,690	14,345	5,649	4,302	1,120	39.4%	24.9%	19.0%	19.8%	2.68%
35	25,444	16,180	6,284	4,727	1,288	38.8%	24.7%	18.6%	20.5%	3.75%
36	28,303	17,667	6,412	4,661	1,467	36.3%	22.7%	16.5%	22.9%	3.39%
37	31,195	19,264	6,926	4,899	1,716	36.0%	22.2%	15.7%	24.8%	3.60%
38	34,733	20,929	6,759	4,676	1,782	32.3%	19.5%	13.5%	26.4%	3.31%
39	38,677	22,607	6,703	4,454	1,953	29.7%	17.3%	11.5%	29.1%	3.51%
40	39,752	22,168	5,773	3,567	1,978	26.0%	14.5%	9.0%	34.3%	3.75%
41	39,219	20,971	4,771	2,691	1,895	22.8%	12.2%	6.9%	39.7%	3.22%
42	38,048	19,208	3,397	1,717	1,532	17.7%	8.9%	4.5%	45.1%	2.49%
43	29,011	13,771	1,918	820	1,009	13.9%	6.6%	2.8%	52.6%	2.71%
44	20,313	8,823	930	330	565	10.5%	4.6%	1.6%	60.8%	2.41%
45	12,560	4,961	319	92	208	6.4%	2.5%	0.7%	65.2%	1.95%
46	6,437	2,389	112	36	73	4.7%	1.7%	0.6%	65.2%	0.00%
47	3,418	1,146	33	10	22	2.9%	1.0%	0.3%	66.7%	0.00%
48	1,716	547	9	1	8	1.6%	0.5%	0.1%	88.9%	0.00%
49	772	243	6	1	4	2.5%	0.8%	0.1%	66.7%	0.00%
50歳以上	481	158	5	3	2	3.2%	1.0%	0.6%	40.0%	0.00%
合計	447,790	252,835	75,976	52,504	20,171	30.0%	17.0%	11.7%	26.5%	3.24%

年別 妊娠率・生産率・多胎率

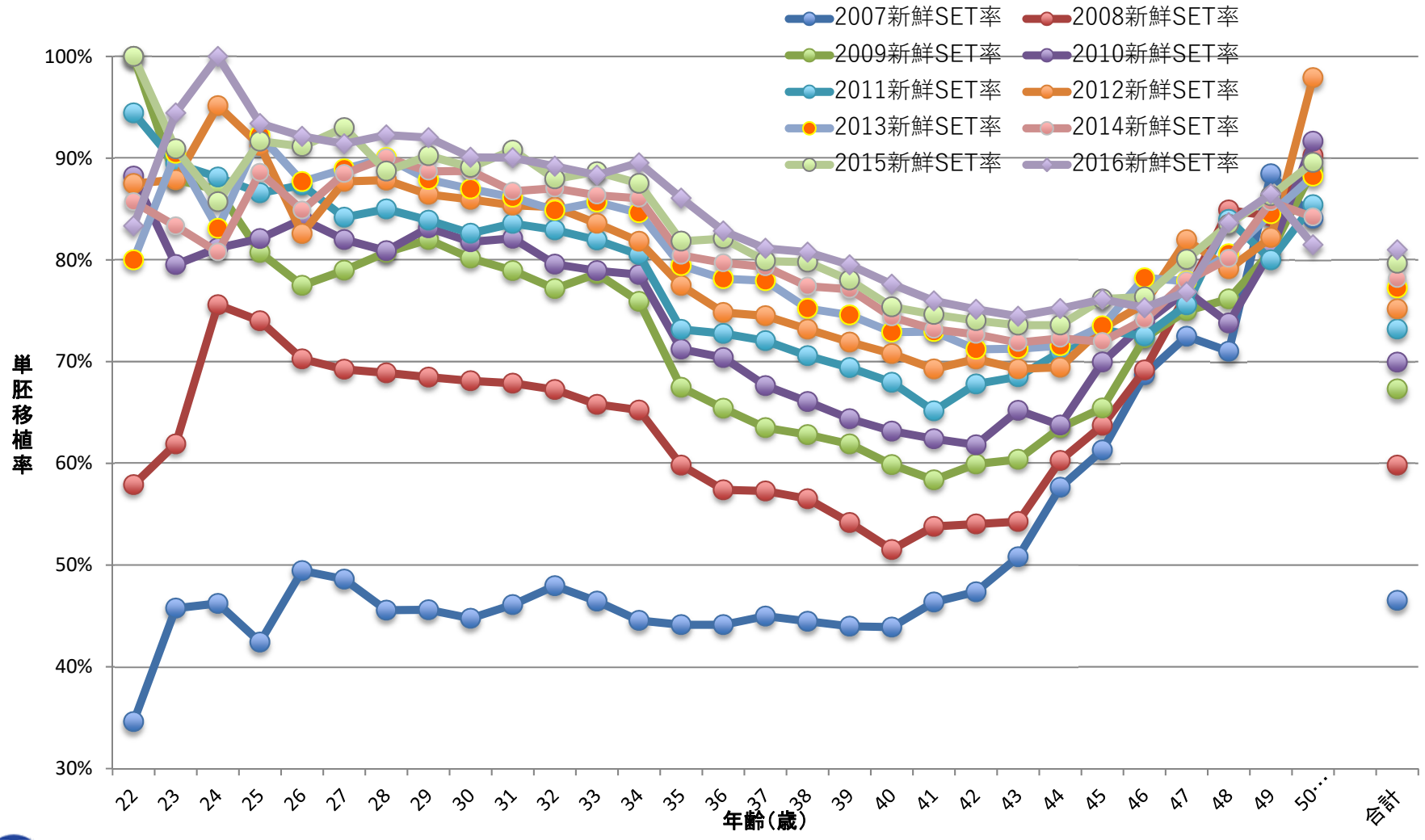


* 2007年以降は全胚凍結周期を除いて表示

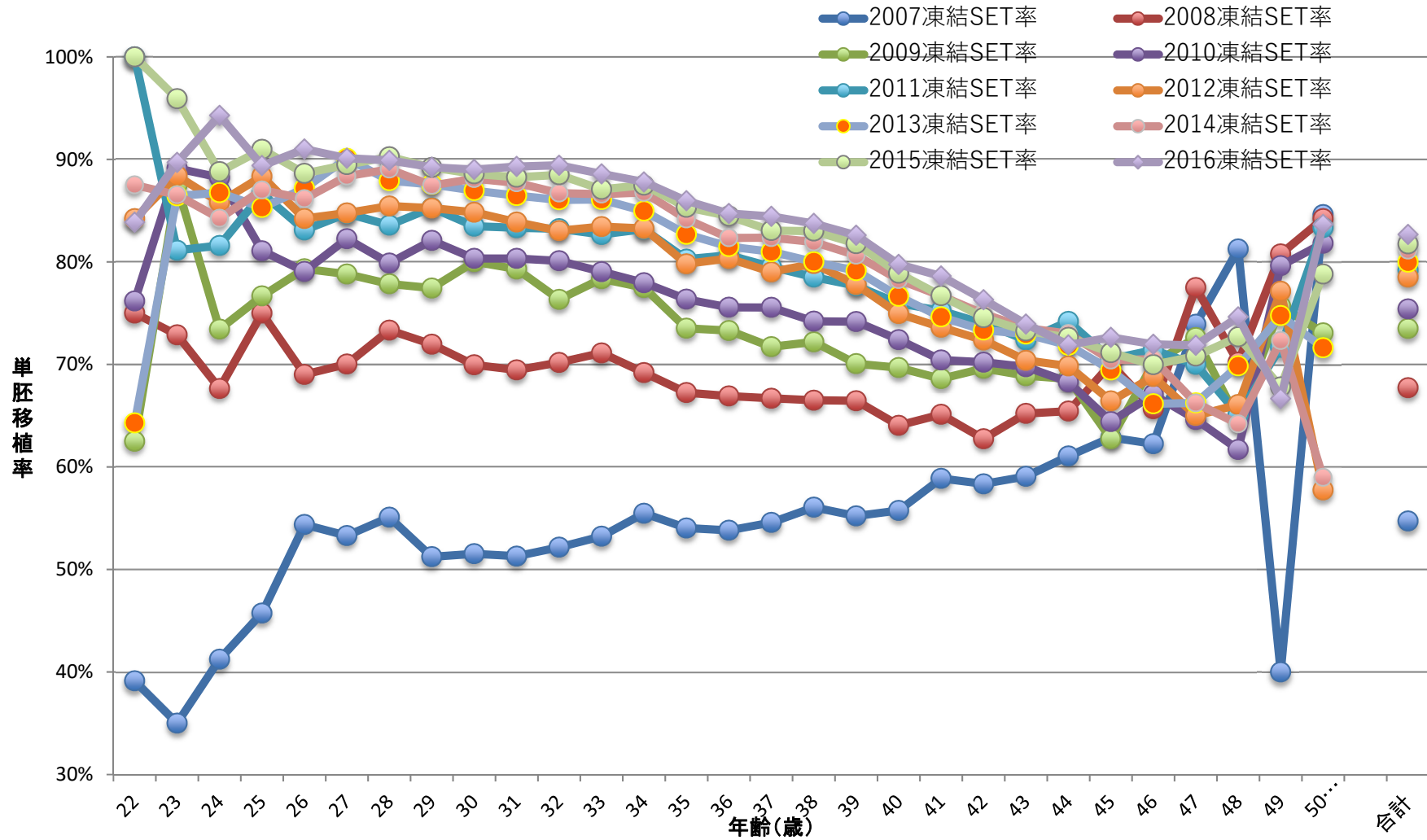
年別 妊娠率・生産率・多胎率

西暦	妊娠率 (/ET、新鮮)	妊娠率 (/ET、凍結)	生産率 (/採卵) *	多胎率
1989	19.5%	7.6%	8.9%	14.0%
1990	22.0%	11.1%	11.2%	18.3%
1991	23.8%	16.2%	12.4%	13.9%
1992	21.5%	14.9%	11.6%	19.3%
1993	23.2%	14.4%	12.6%	18.2%
1994	21.2%	16.1%	11.8%	19.1%
1995	22.5%	22.7%	12.9%	19.8%
1996	23.3%	16.8%	13.7%	18.9%
1997	23.6%	21.9%	13.9%	16.9%
1998	23.8%	22.9%	14.9%	18.2%
1999	25.0%	24.2%	14.2%	16.0%
2000	25.4%	24.8%	14.6%	16.5%
2001	26.3%	25.9%	14.7%	17.2%
2002	27.6%	27.7%	14.6%	15.9%
2003	28.2%	31.6%	14.4%	16.0%
2004	27.6%	31.2%	12.7%	15.1%
2005	28.0%	32.7%	12.3%	14.4%
2006	26.5%	33.0%	11.0%	12.1%
2007	24.4%	32.1%	9.9%	11.0%
2008	21.9%	32.2%	8.5%	6.6%
2009	22.3%	32.6%	9.3%	5.1%
2010	21.9%	33.7%	8.2%	4.7%
2011	21.3%	34.2%	7.8%	4.1%
2012	20.8%	33.7%	7.1%	3.8%
2013	20.8%	32.8%	6.8%	3.4%
2014	21.0%	33.4%	7.0%	3.1%
2015	20.8%	33.2%	6.7%	3.1%
2016	20.5%	33.3%	6.2%	3.2%

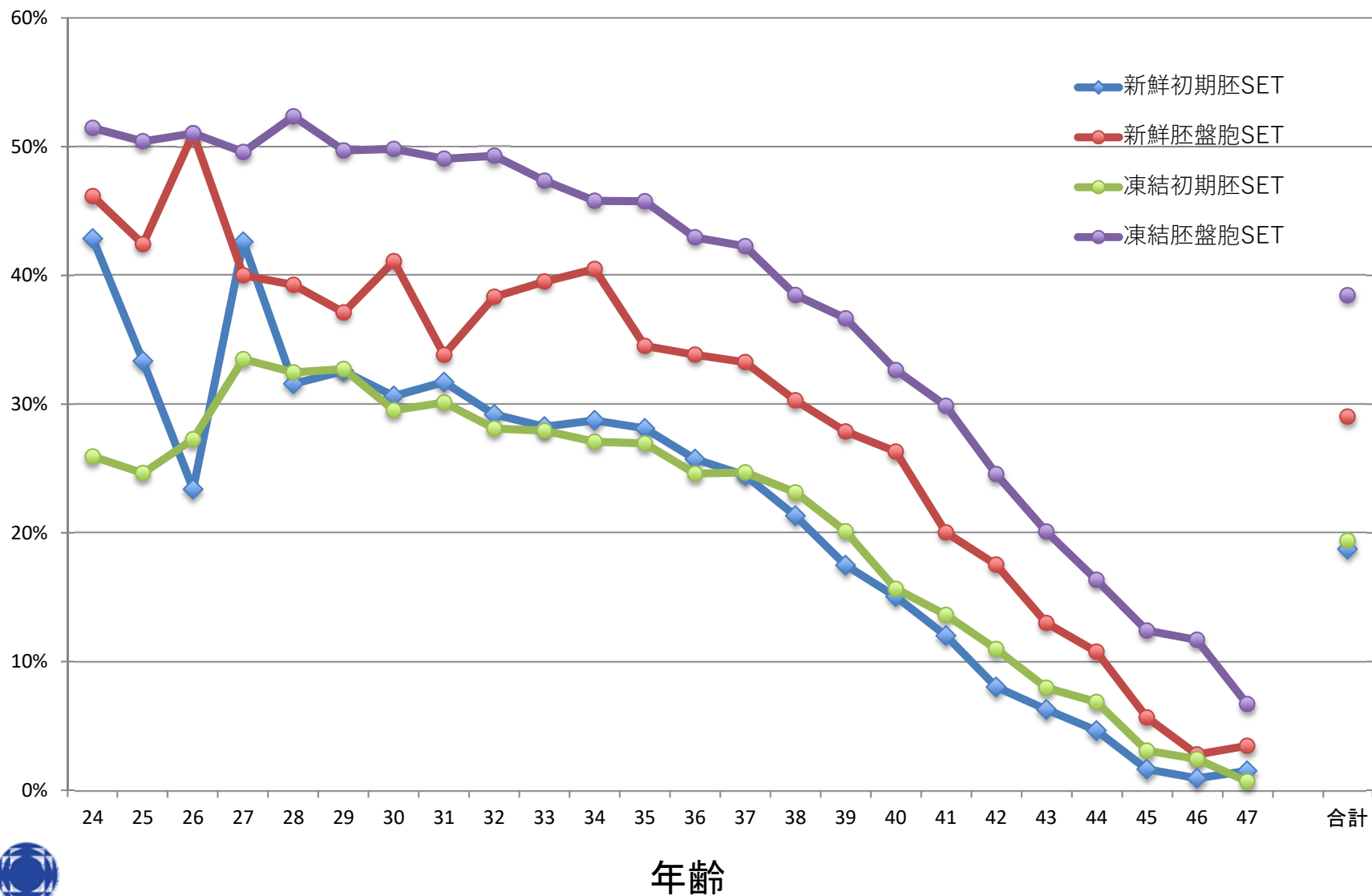
新鮮SET率 年別 2007-2016



凍結SET率 年別 2007-2016



移植ステージ別・年齢別の移植あたり妊娠率 2016



移植ステージ別・年齢別の移植あたり妊娠率 2016

年齢別	新鮮初期胚SET	新鮮胚盤胞SET	凍結初期胚SET	凍結胚盤胞SET
24	42.9%	46.2%	25.9%	51.4%
25	33.3%	42.4%	24.6%	50.4%
26	23.4%	51.0%	27.3%	51.0%
27	42.6%	40.0%	33.5%	49.6%
28	31.6%	39.3%	32.5%	52.4%
29	32.6%	37.1%	32.7%	49.7%
30	30.6%	41.1%	29.5%	49.8%
31	31.7%	33.8%	30.1%	49.1%
32	29.2%	38.3%	28.1%	49.3%
33	28.2%	39.5%	27.9%	47.3%
34	28.7%	40.5%	27.1%	45.8%
35	28.1%	34.5%	26.9%	45.8%
36	25.7%	33.8%	24.6%	43.0%
37	24.5%	33.3%	24.7%	42.3%
38	21.3%	30.3%	23.1%	38.5%
39	17.5%	27.9%	20.1%	36.7%
40	15.0%	26.3%	15.6%	32.6%
41	12.0%	20.0%	13.6%	29.9%
42	8.0%	17.5%	11.0%	24.6%
43	6.3%	13.0%	8.0%	20.1%
44	4.6%	10.8%	6.9%	16.3%
45	1.6%	5.7%	3.1%	12.4%
46	0.9%	2.8%	2.4%	11.7%
47	1.5%	3.4%	0.7%	6.7%
合計	18.7%	29.0%	19.4%	38.4%