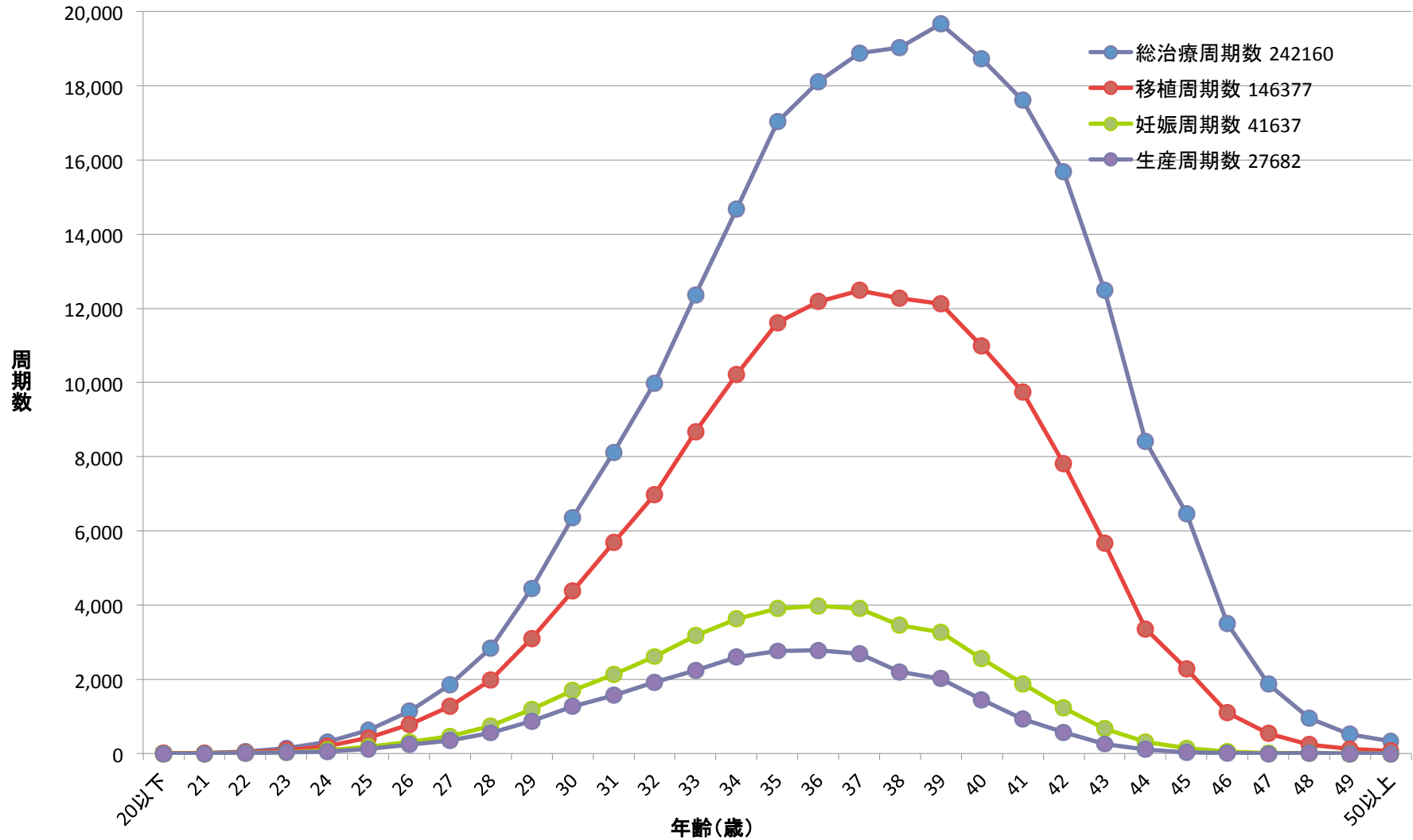
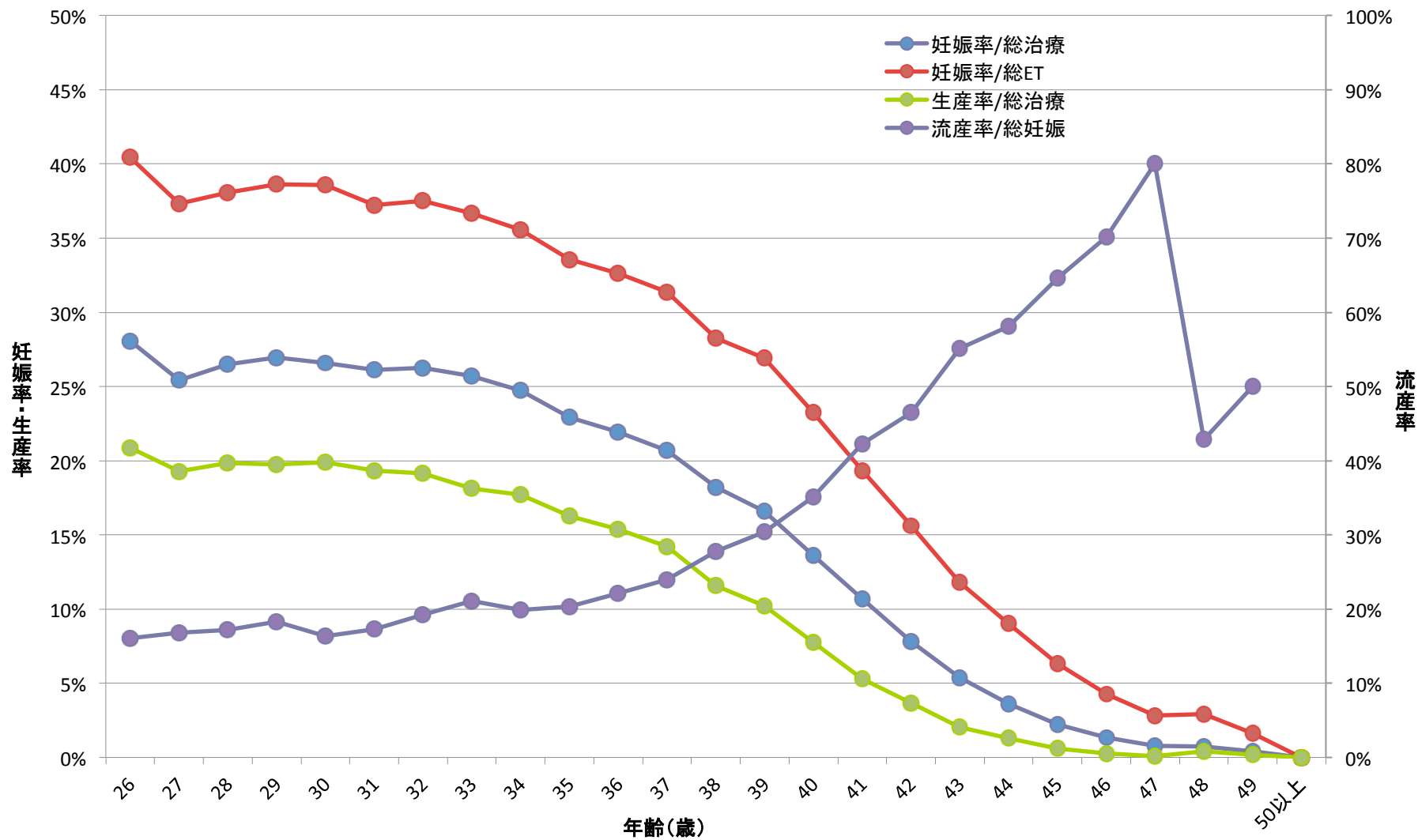


ART治療周期数 2010

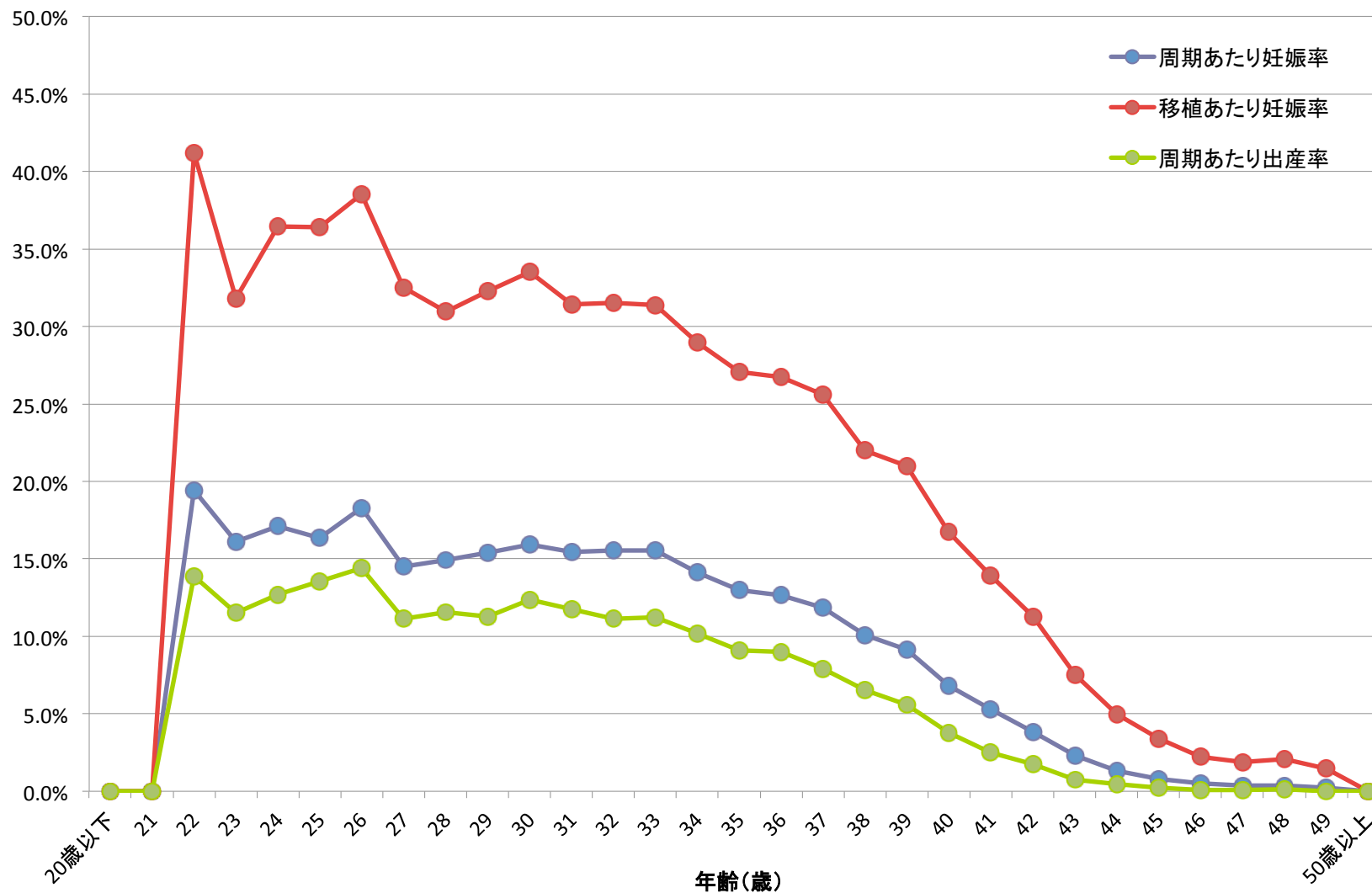


ART妊娠率・生産率・流産率 2010

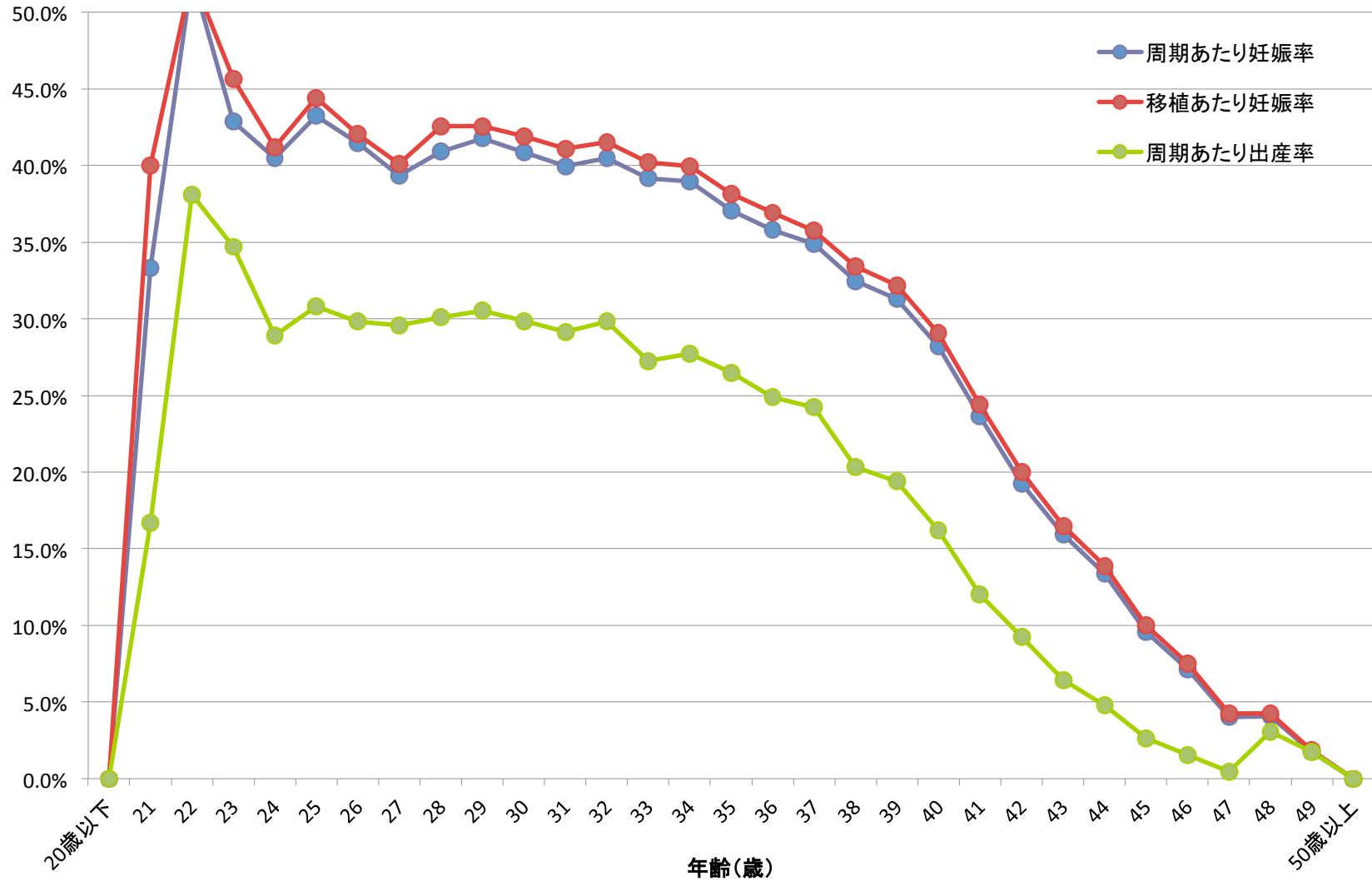


年齢別	2010年全テ								
	総治療周期数	移植周期数	妊娠周期数	生産周期数	流産数	妊娠率/総治療	妊娠率/総ET	生産率/総治療	流産率/総妊娠
20以下	9	5	0	0	0	0.0%	0.0%	0.0%	
21	15	9	2	1	1	13.3%	22.2%	6.7%	50.0%
22	57	38	18	13	4	31.6%	47.4%	22.8%	22.2%
23	136	90	35	27	6	25.7%	38.9%	19.9%	17.1%
24	302	204	80	58	15	26.5%	39.2%	19.2%	18.8%
25	631	423	175	132	23	27.7%	41.4%	20.9%	13.1%
26	1,132	786	318	236	51	28.1%	40.5%	20.8%	16.0%
27	1,849	1,259	470	357	79	25.4%	37.3%	19.3%	16.8%
28	2,833	1,970	750	562	129	26.5%	38.1%	19.8%	17.2%
29	4,444	3,103	1,198	878	219	27.0%	38.6%	19.8%	18.3%
30	6,360	4,382	1,691	1,264	276	26.6%	38.6%	19.9%	16.3%
31	8,113	5,693	2,120	1,570	367	26.1%	37.2%	19.4%	17.3%
32	9,985	6,985	2,621	1,912	503	26.2%	37.5%	19.1%	19.2%
33	12,364	8,671	3,179	2,243	671	25.7%	36.7%	18.1%	21.1%
34	14,674	10,216	3,631	2,600	721	24.7%	35.5%	17.7%	19.9%
35	17,022	11,611	3,897	2,768	792	22.9%	33.6%	16.3%	20.3%
36	18,115	12,180	3,972	2,786	877	21.9%	32.6%	15.4%	22.1%
37	18,890	12,471	3,910	2,685	937	20.7%	31.4%	14.2%	24.0%
38	19,027	12,268	3,465	2,200	963	18.2%	28.2%	11.6%	27.8%
39	19,667	12,116	3,263	2,013	991	16.6%	26.9%	10.2%	30.4%
40	18,729	10,977	2,551	1,451	896	13.6%	23.2%	7.7%	35.1%
41	17,612	9,747	1,883	934	797	10.7%	19.3%	5.3%	42.3%
42	15,679	7,822	1,221	574	568	7.8%	15.6%	3.7%	46.5%
43	12,472	5,664	669	253	369	5.4%	11.8%	2.0%	55.2%
44	8,412	3,359	303	109	176	3.6%	9.0%	1.3%	58.1%
45	6,473	2,277	144	39	93	2.2%	6.3%	0.6%	64.6%
46	3,499	1,096	47	10	33	1.3%	4.3%	0.3%	70.2%
47	1,872	533	15	2	12	0.8%	2.8%	0.1%	80.0%
48	945	240	7	4	3	0.7%	2.9%	0.4%	42.9%
49	514	122	2	1	1	0.4%	1.6%	0.2%	50.0%
50以上	328	60	0	0	0	0.0%	0.0%	0.0%	
合計	242,160	146,377	41,637	27,682	10,573	17.2%	28.4%	11.4%	25.4%

ART妊娠率・生産率（新鮮胚移植） 2010



ART妊娠率・生産率（凍結胚移植） 2010

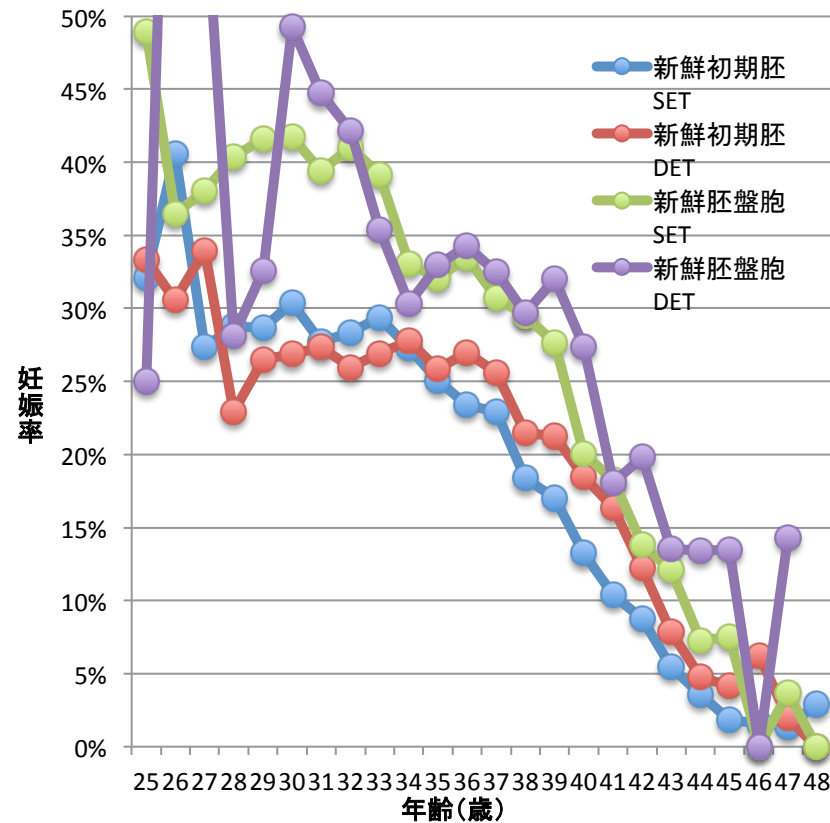


新鮮	2010年 新鮮胚								
	総治療周期数	移植周期数	妊娠周期数	生産周期数	流産数	妊娠率/総治療	妊娠率/総ET	生産率/総治療	流産率/総妊娠
20歳以下	9	5	0	0	0	0.0%	0.0%	0.0%	
21	9	4	0	0	0	0.0%	0.0%	0.0%	
22	36	17	7	5	1	19.4%	41.2%	13.9%	14.3%
23	87	44	14	10	3	16.1%	31.8%	11.5%	21.4%
24	181	85	31	23	4	17.1%	36.5%	12.7%	12.9%
25	361	162	59	49	3	16.3%	36.4%	13.6%	5.1%
26	645	306	118	93	15	18.3%	38.6%	14.4%	12.7%
27	1033	461	150	115	21	14.5%	32.5%	11.1%	14.0%
28	1573	759	235	182	36	14.9%	31.0%	11.6%	15.3%
29	2488	1187	383	280	63	15.4%	32.3%	11.3%	16.4%
30	3636	1728	579	450	81	15.9%	33.5%	12.4%	14.0%
31	4562	2243	705	536	108	15.5%	31.4%	11.7%	15.3%
32	5680	2796	882	632	175	15.5%	31.5%	11.1%	19.8%
33	7036	3485	1094	790	211	15.5%	31.4%	11.2%	19.3%
34	8382	4090	1184	855	212	14.1%	28.9%	10.2%	17.9%
35	10020	4813	1303	911	264	13.0%	27.1%	9.1%	20.3%
36	10838	5124	1369	973	288	12.6%	26.7%	9.0%	21.0%
37	11605	5364	1372	920	348	11.8%	25.6%	7.9%	25.4%
38	12108	5549	1220	793	314	10.1%	22.0%	6.5%	25.7%
39	13056	5691	1195	731	365	9.2%	21.0%	5.6%	30.5%
40	12757	5188	869	480	306	6.8%	16.8%	3.8%	35.2%
41	12445	4744	661	311	302	5.3%	13.9%	2.5%	45.7%
42	11633	3934	444	200	221	3.8%	11.3%	1.7%	49.8%
43	9669	2958	223	73	129	2.3%	7.5%	0.8%	57.8%
44	6826	1832	91	33	52	1.3%	5.0%	0.5%	57.1%
45	5415	1268	43	11	31	0.8%	3.4%	0.2%	72.1%
46	3051	671	15	3	10	0.5%	2.2%	0.1%	66.7%
47	1649	321	6	1	4	0.4%	1.9%	0.1%	66.7%
48	846	145	3	1	2	0.4%	2.1%	0.1%	66.7%
49	456	68	1	0	1	0.2%	1.5%	0.0%	100.0%
50歳以上	299	36	0	0	0	0.0%	0.0%	0.0%	
合計	158391	65078	14256	9461	3570	9.0%	21.9%	6.0%	25.0%

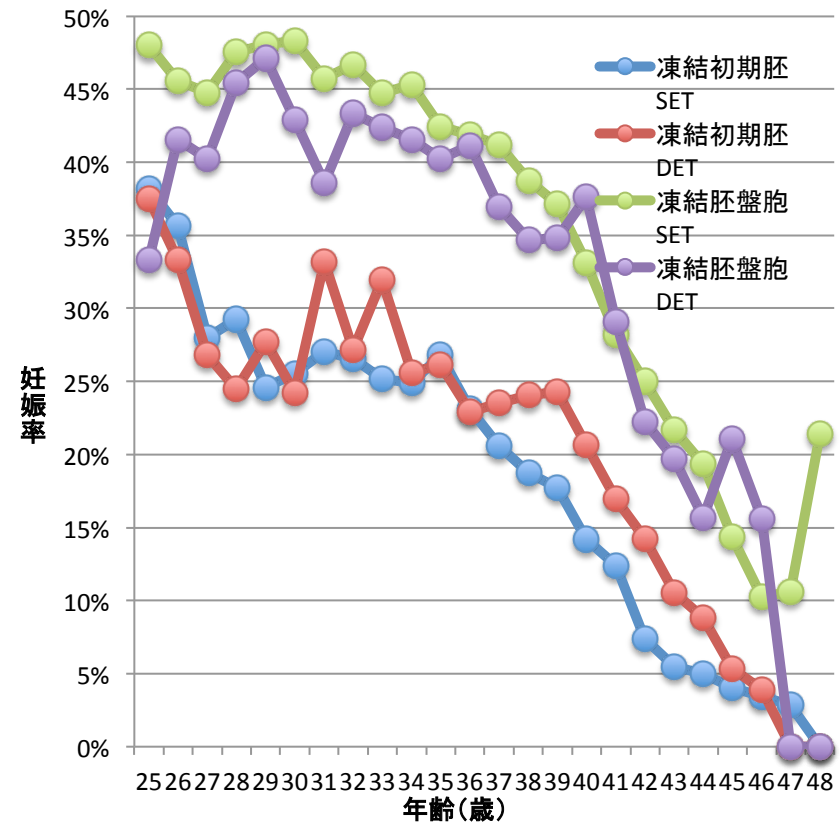
凍結	2010年 凍結胚								
	総治療周期数	移植周期数	妊娠周期数	生産周期数	流産数	妊娠率/総治療	妊娠率/総ET	生産率/総治療	流産率/総妊娠
20歳以下	0	0	0	0	0				
21	6	5	2	1	1	33.3%	40.0%	16.7%	50.0%
22	21	21	11	8	3	52.4%	52.4%	38.1%	27.3%
23	49	46	21	17	3	42.9%	45.7%	34.7%	14.3%
24	121	119	49	35	11	40.5%	41.2%	28.9%	22.4%
25	266	259	115	82	20	43.2%	44.4%	30.8%	17.4%
26	480	473	199	143	35	41.5%	42.1%	29.8%	17.6%
27	811	795	319	240	58	39.3%	40.1%	29.6%	18.2%
28	1256	1208	514	378	93	40.9%	42.5%	30.1%	18.1%
29	1952	1915	815	596	156	41.8%	42.6%	30.5%	19.1%
30	2717	2650	1110	811	195	40.9%	41.9%	29.8%	17.6%
31	3542	3443	1415	1033	259	39.9%	41.1%	29.2%	18.3%
32	4293	4183	1737	1279	327	40.5%	41.5%	29.8%	18.8%
33	5319	5179	2082	1449	459	39.1%	40.2%	27.2%	22.0%
34	6283	6122	2447	1742	509	38.9%	40.0%	27.7%	20.8%
35	6991	6789	2592	1852	525	37.1%	38.2%	26.5%	20.3%
36	7274	7053	2603	1810	588	35.8%	36.9%	24.9%	22.6%
37	7277	7103	2538	1762	588	34.9%	35.7%	24.2%	23.2%
38	6910	6713	2245	1404	647	32.5%	33.4%	20.3%	28.8%
39	6599	6416	2065	1278	625	31.3%	32.2%	19.4%	30.3%
40	5965	5786	1682	968	589	28.2%	29.1%	16.2%	35.0%
41	5158	4999	1221	621	493	23.7%	24.4%	12.0%	40.4%
42	4041	3885	777	373	347	19.2%	20.0%	9.2%	44.7%
43	2799	2702	446	180	240	15.9%	16.5%	6.4%	53.8%
44	1585	1526	212	76	124	13.4%	13.9%	4.8%	58.5%
45	1058	1009	101	28	62	9.5%	10.0%	2.6%	61.4%
46	447	425	32	7	23	7.2%	7.5%	1.6%	71.9%
47	223	212	9	1	8	4.0%	4.2%	0.4%	88.9%
48	98	94	4	3	1	4.1%	4.3%	3.1%	25.0%
49	58	54	1	1	0	1.7%	1.9%	1.7%	0.0%
50歳以上	26	22	0	0	0	0.0%	0.0%	0.0%	
合計	83625	81206	27364	18178	6989	32.7%	33.7%	21.7%	25.5%

妊娠率(移植胚数・ステージ別) 2010

新鮮胚

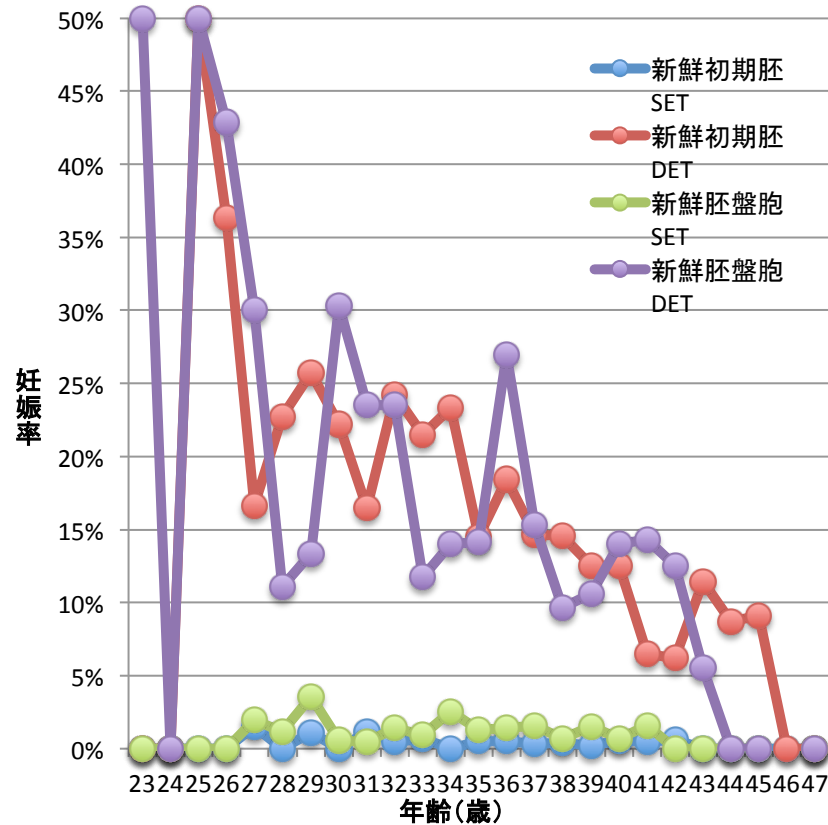


凍結胚

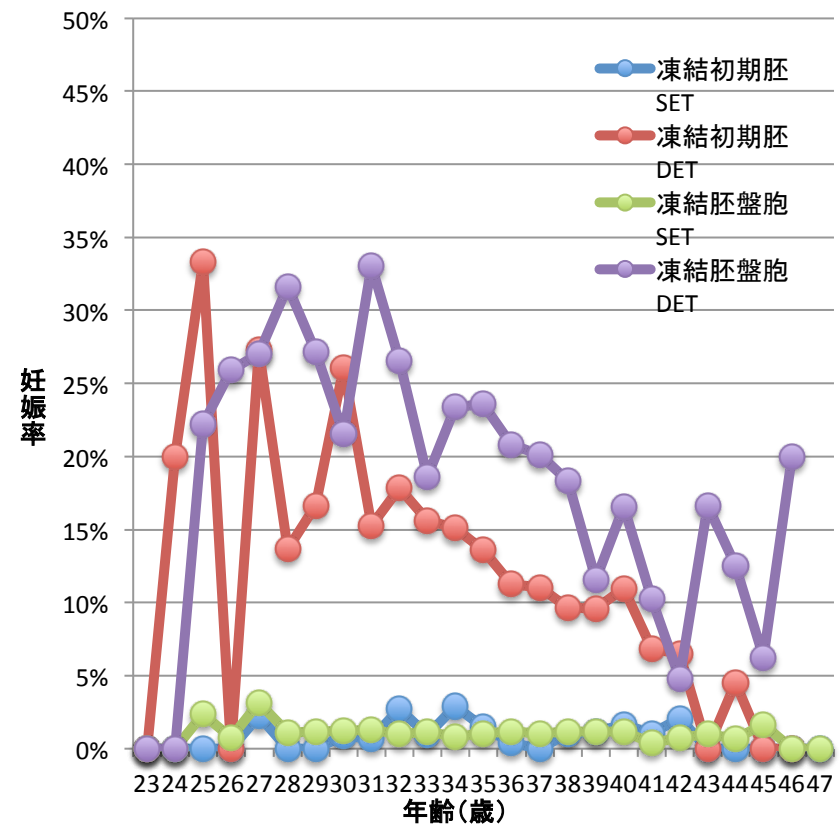


多胎率(移植胚数・ステージ別) 2010

新鮮胚



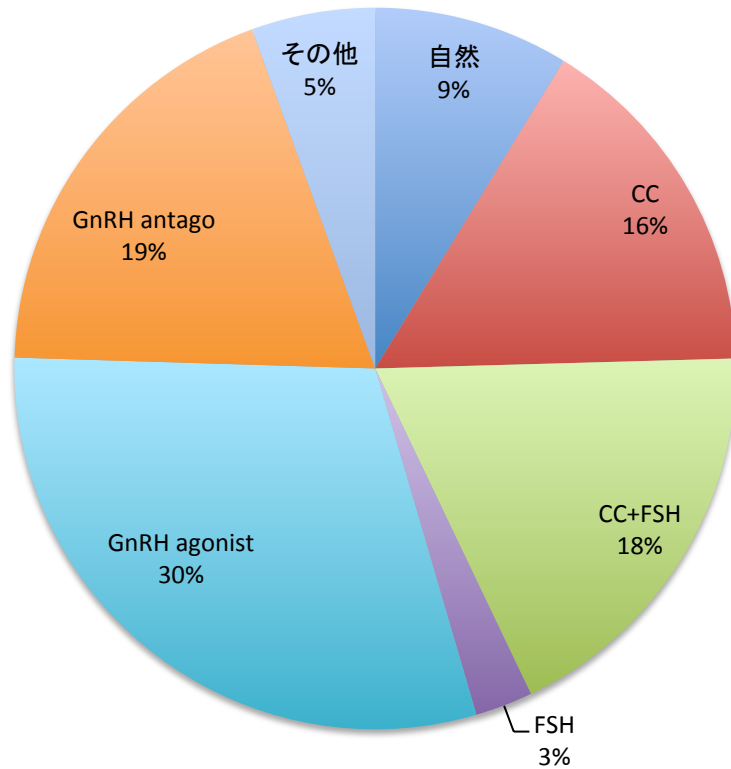
凍結胚



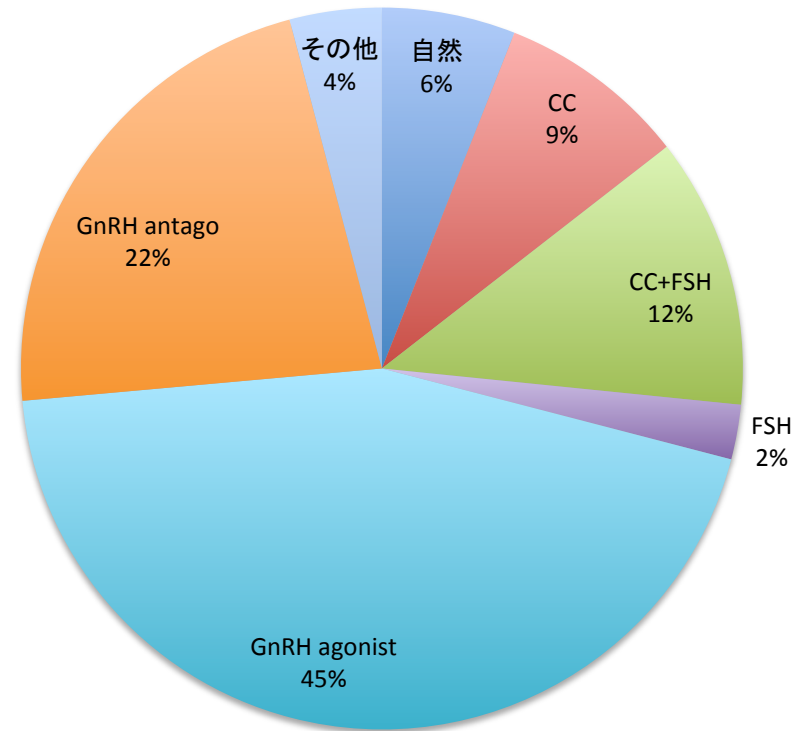
		移植胚ステージ・移植胚数別															
		妊娠率								多胎率							
		新鮮初期胚 SET	新鮮初期胚 DET	新鮮胚盤胞 SET	新鮮胚盤胞 DET	凍結初期胚 SET	凍結初期胚 DET	凍結胚盤胞 SET	凍結胚盤胞 DET	新鮮初期胚 SET	新鮮初期胚 DET	新鮮胚盤胞 SET	新鮮胚盤胞 DET	凍結初期胚 SET	凍結初期胚 DET	凍結胚盤胞 SET	凍結胚盤胞 DET
20以下		0%	0%	0%													
	21	0%		0%	0%	50%			0%					0%			
	22	56%	0%	33%	0%	67%	0%	54%	100%	0%		0%		0%		0%	0%
	23	14%	40%	50%	67%	22%	33%	53%	50%	0%	0%	0%	50%	0%	0%	0%	0%
	24	39%	22%	41%	33%	42%	71%	40%	20%	0%	0%	0%	0%	0%	20%	0%	0%
	25	32%	33%	49%	25%	38%	38%	48%	33%	0%	50%	0%	50%	0%	33%	2%	22%
	26	41%	31%	36%	88%	36%	33%	46%	42%	0%	36%	0%	43%	0%	0%	1%	26%
	27	27%	34%	38%	59%	28%	27%	45%	40%	2%	17%	2%	30%	2%	27%	3%	27%
	28	29%	23%	40%	28%	29%	24%	48%	45%	0%	23%	1%	11%	0%	14%	1%	32%
	29	29%	27%	42%	33%	25%	28%	48%	47%	1%	26%	4%	13%	0%	17%	1%	27%
	30	30%	27%	42%	49%	26%	24%	48%	43%	0%	22%	1%	30%	1%	26%	1%	22%
	31	28%	27%	39%	45%	27%	33%	46%	39%	1%	16%	0%	24%	1%	15%	1%	33%
	32	28%	26%	41%	42%	27%	27%	47%	43%	0%	24%	1%	24%	3%	18%	1%	27%
	33	29%	27%	39%	35%	25%	32%	45%	42%	1%	21%	1%	12%	1%	16%	1%	19%
	34	27%	28%	33%	30%	25%	26%	45%	42%	0%	23%	3%	14%	3%	15%	1%	23%
	35	25%	26%	32%	33%	27%	26%	42%	40%	0%	15%	1%	14%	1%	14%	1%	24%
	36	23%	27%	34%	34%	23%	23%	42%	41%	1%	18%	1%	27%	0%	11%	1%	21%
	37	23%	26%	31%	32%	21%	24%	41%	37%	0%	15%	2%	15%	0%	11%	1%	20%
	38	18%	21%	29%	30%	19%	24%	39%	35%	0%	15%	1%	10%	1%	10%	1%	18%
	39	17%	21%	28%	32%	18%	24%	37%	35%	0%	13%	2%	11%	1%	10%	1%	12%
	40	13%	18%	20%	27%	14%	21%	33%	38%	1%	13%	1%	14%	2%	11%	1%	17%
	41	10%	16%	18%	18%	12%	17%	28%	29%	0%	7%	2%	14%	1%	7%	0%	10%
	42	9%	12%	14%	20%	7%	14%	25%	22%	1%	6%	0%	13%	2%	6%	1%	5%
	43	5%	8%	12%	14%	5%	11%	22%	20%	0%	11%	0%	6%	0%	0%	1%	17%
	44	4%	5%	7%	13%	5%	9%	19%	16%	0%	9%	0%	0%	0%	5%	1%	13%
	45	2%	4%	7%	13%	4%	5%	14%	21%	0%	9%	0%	0%	0%	0%	2%	6%
	46	2%	6%	0%	0%	3%	4%	10%	16%	0%	0%			0%	0%	0%	20%
	47	1%	2%	4%	14%	3%	0%	11%	0%	0%	0%	0%	0%	0%			0%
	48	3%	0%	0%		0%	0%	21%	0%	0%							0%
	49	0%	11%	0%		0%	0%	8%			0%						0%
50歳以上		0%	0%	0%		0%	0%	0%	0%								
合計		19%	20%	30%	29%	20%	22%	39%	36%	0%	15%	1%	16%	1%	12%	1%	20%

刺激方法別 内訳 2010

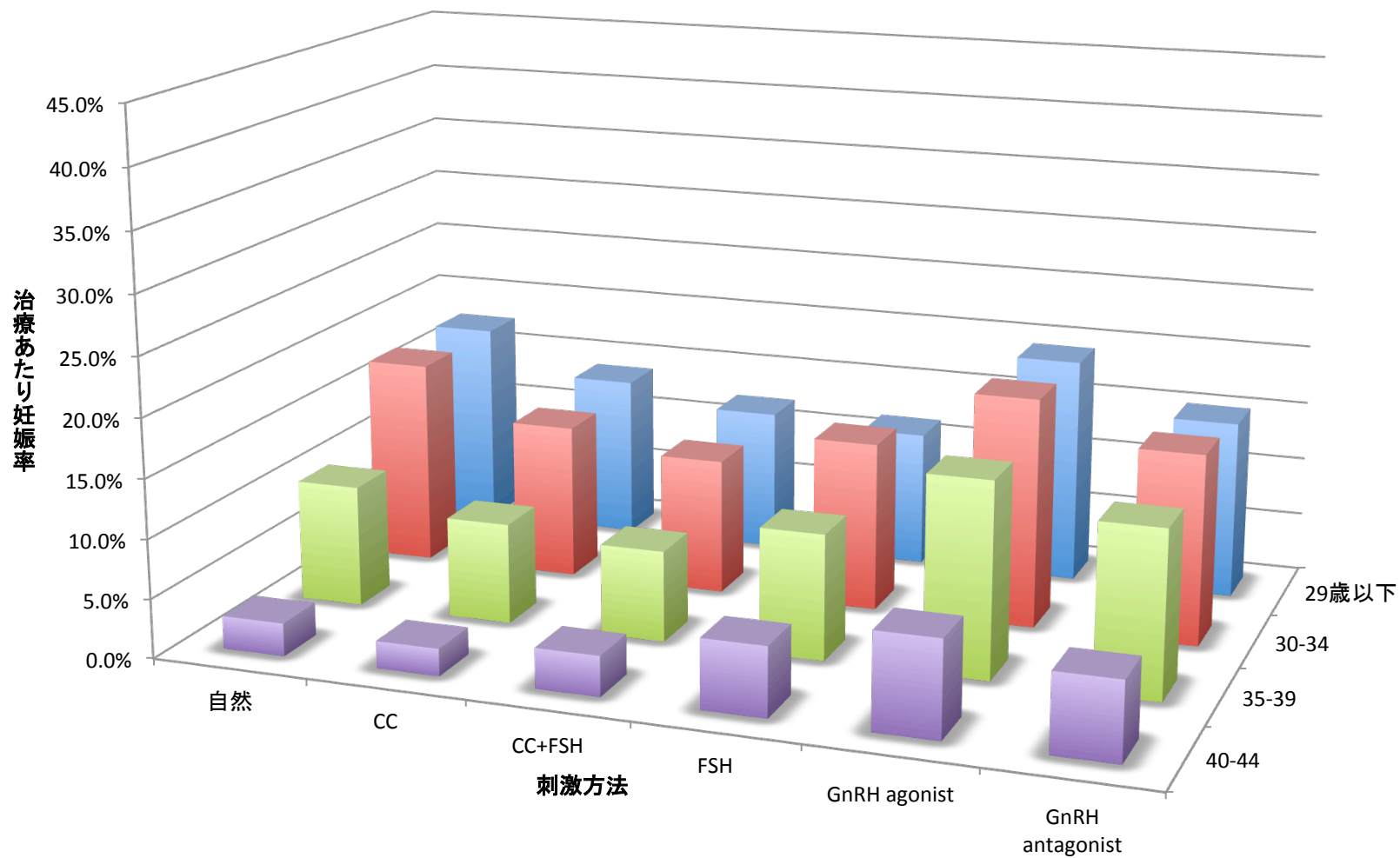
刺激周期



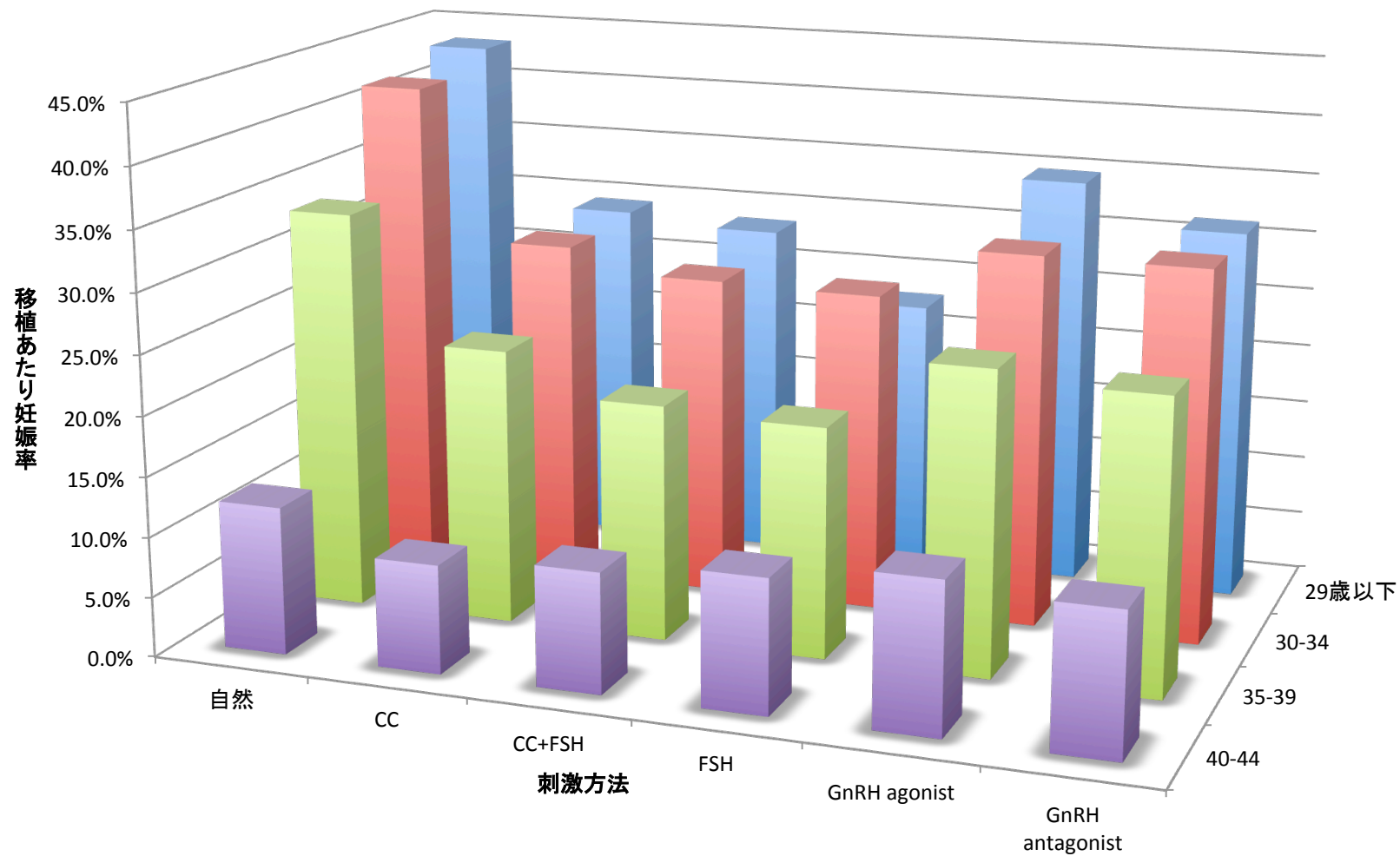
妊娠周期



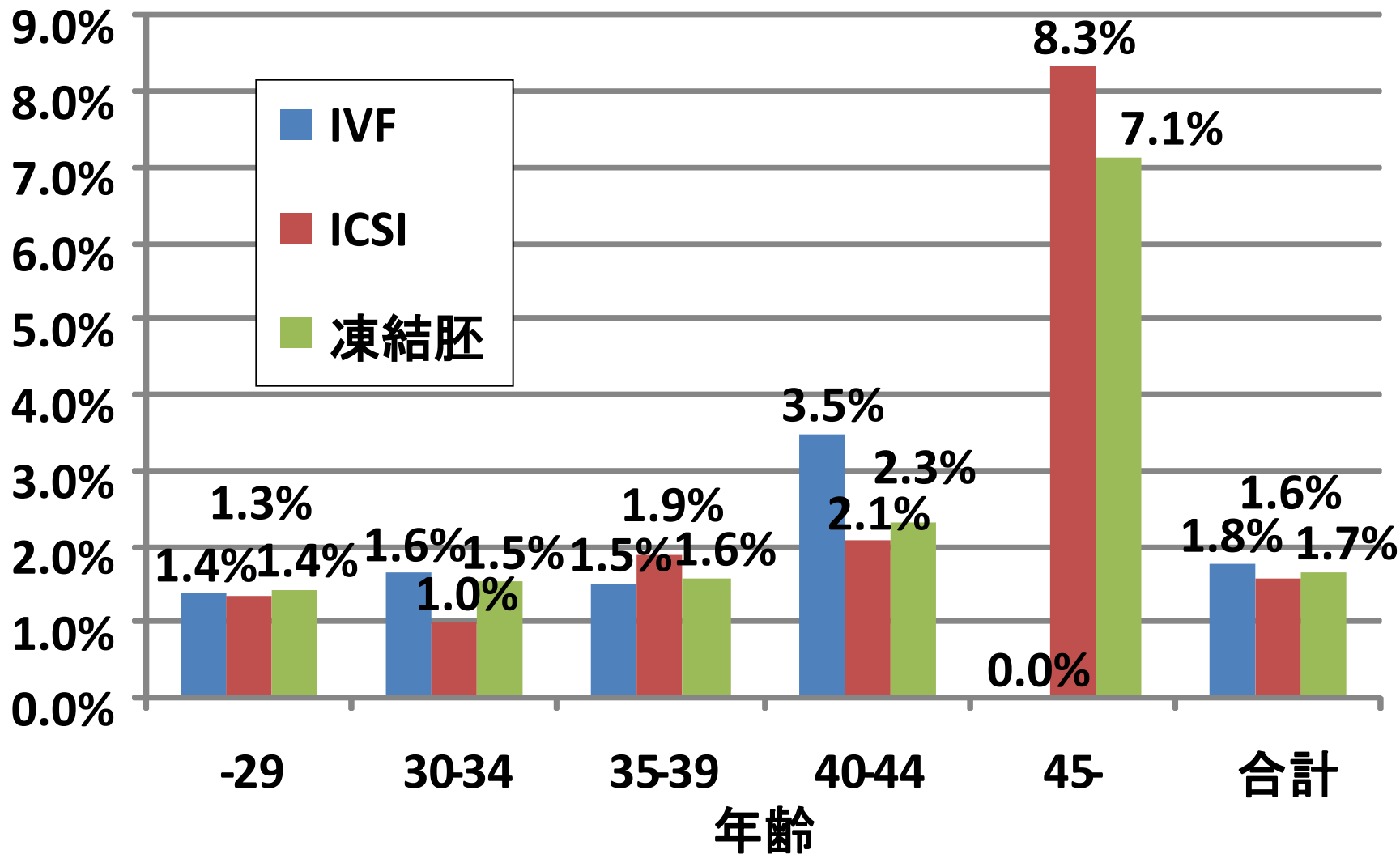
刺激方法別 年齢別 治療あたり妊娠率 2010



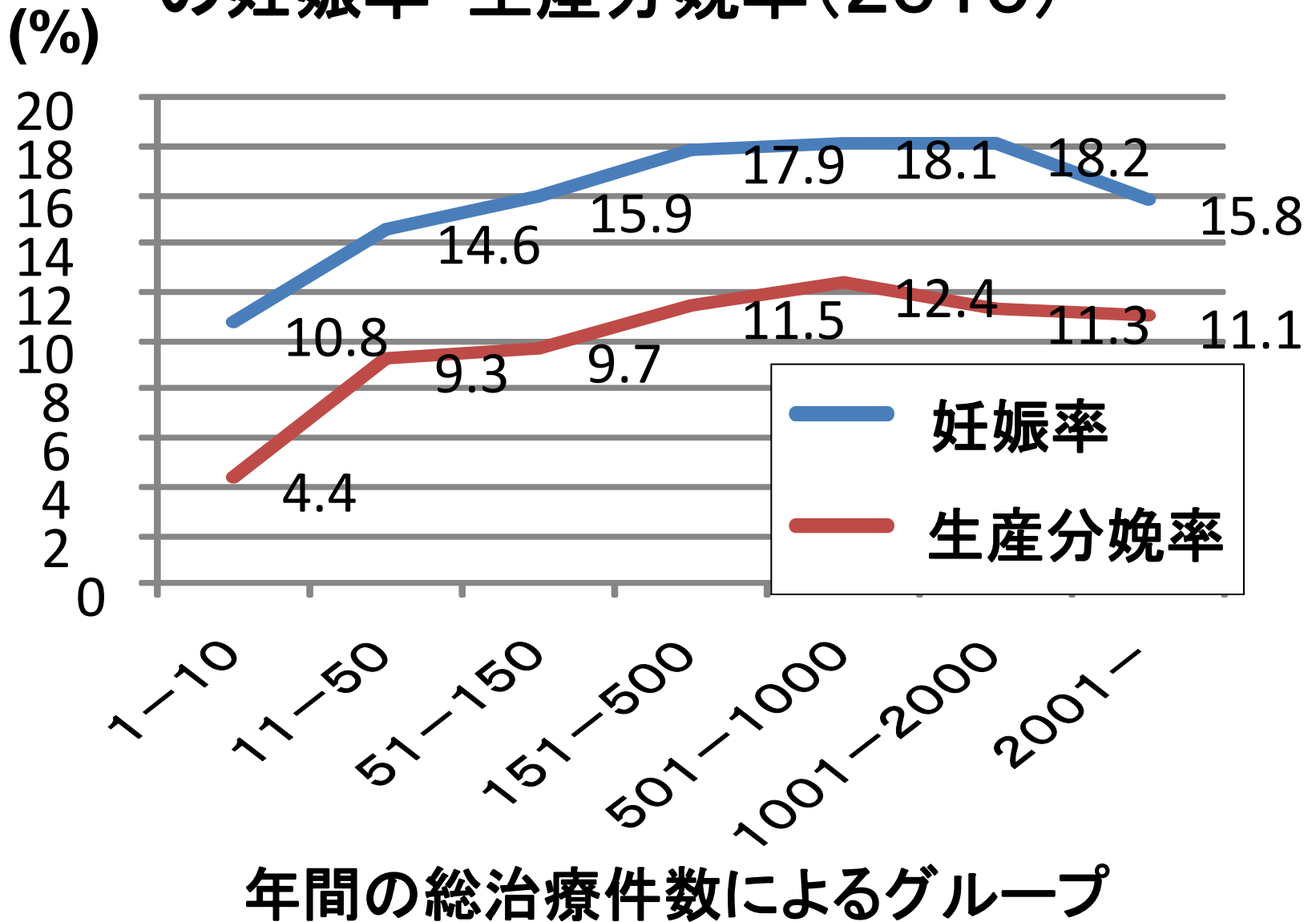
刺激方法別 年齢別 移植あたり妊娠率 2010



先天異常率2010(先天異常／生產死産＋人工流産)



年間総治療数別に分けた各施設グループの妊娠率・生産分娩率(2010)



全国各施設の治療開始周期数あたりの生産率 (2010)

