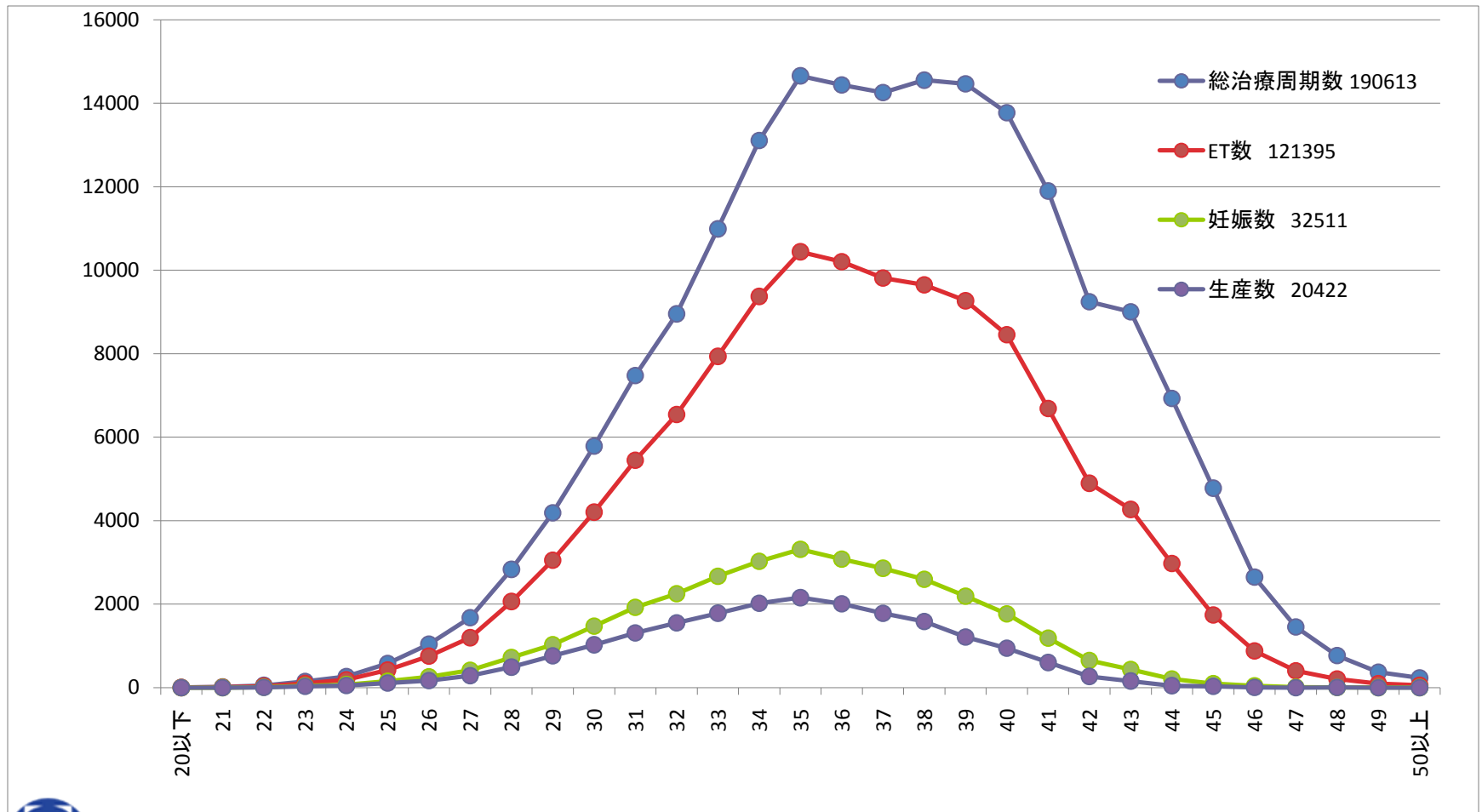
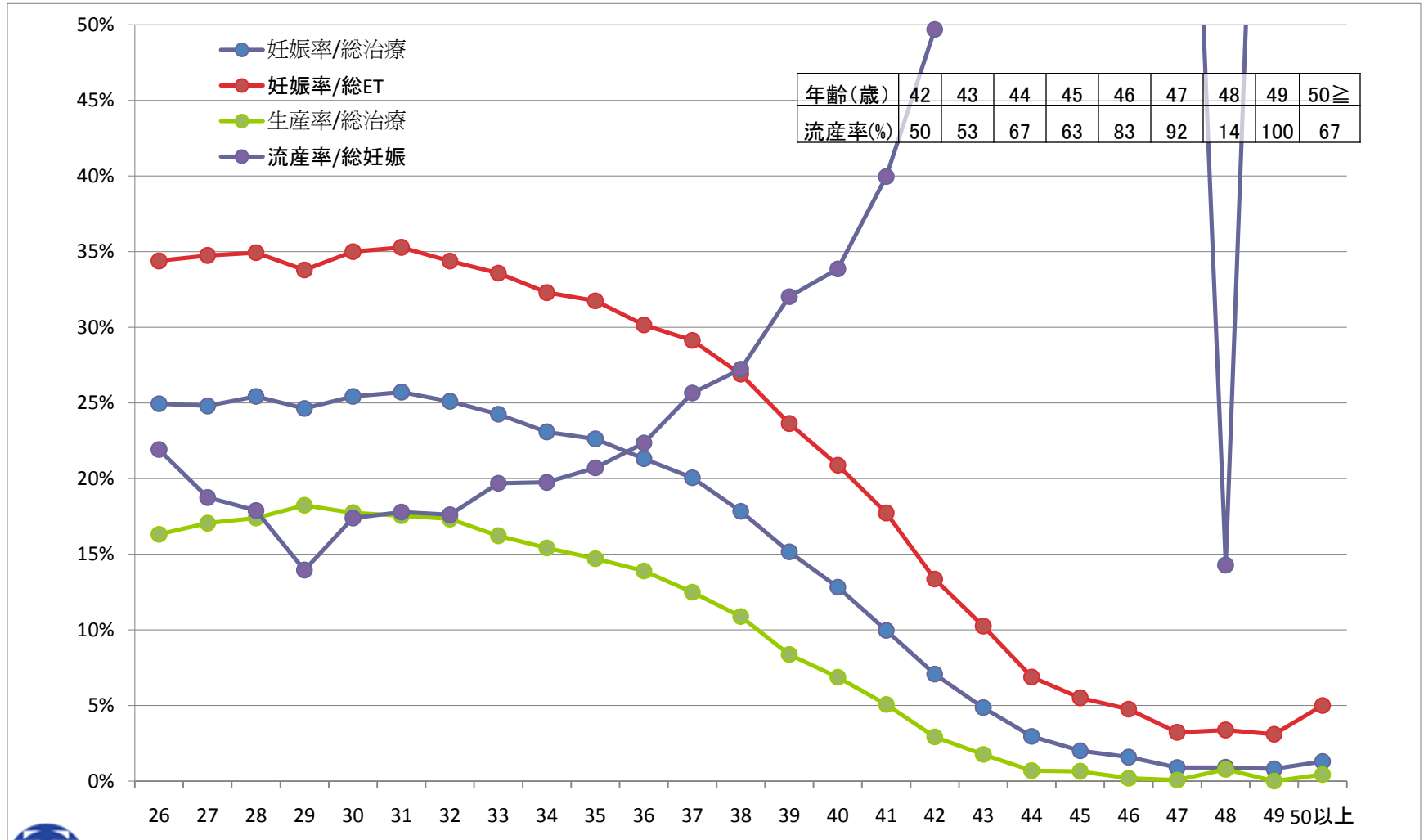


# 治療総数 2008

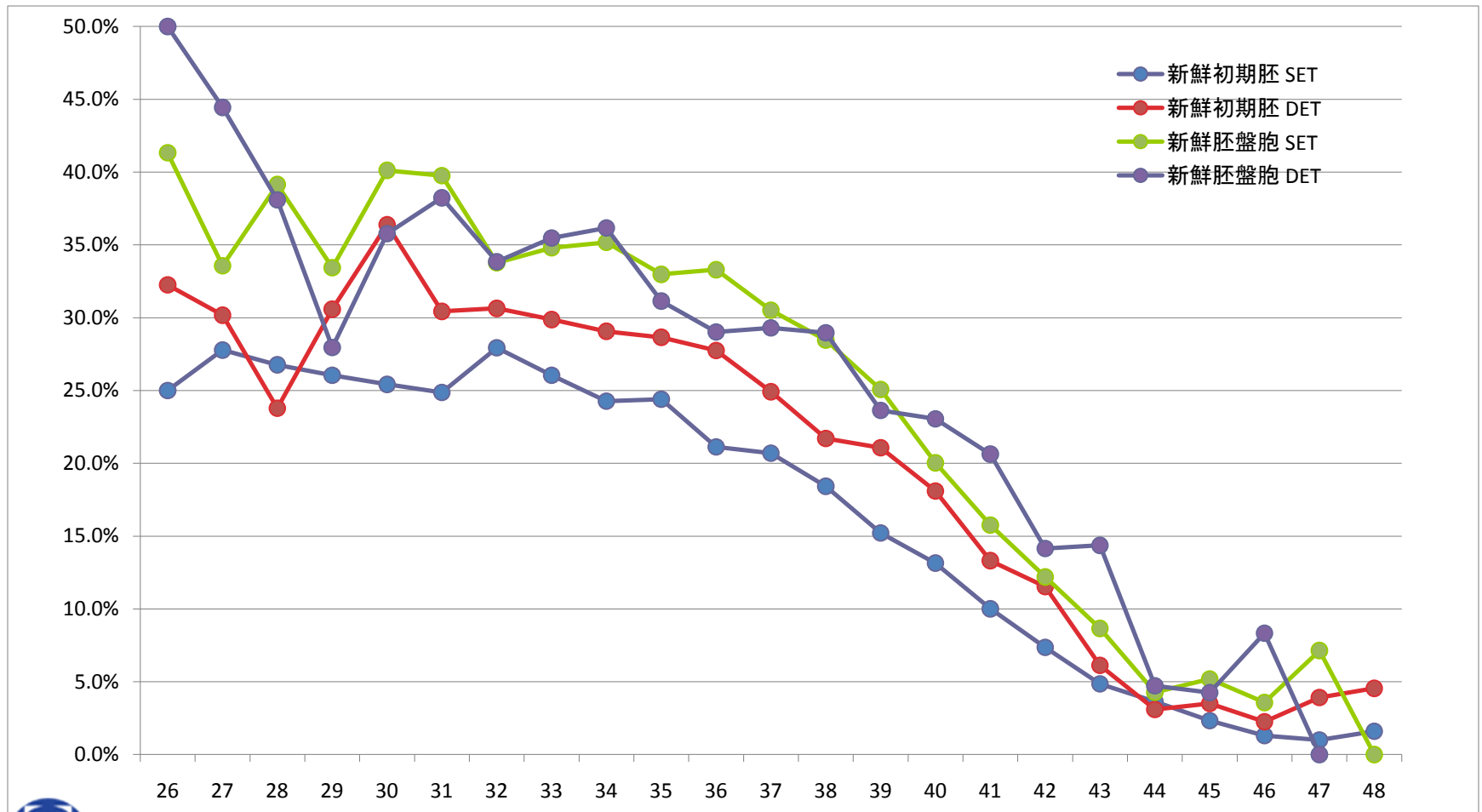


# 治療成績 2008



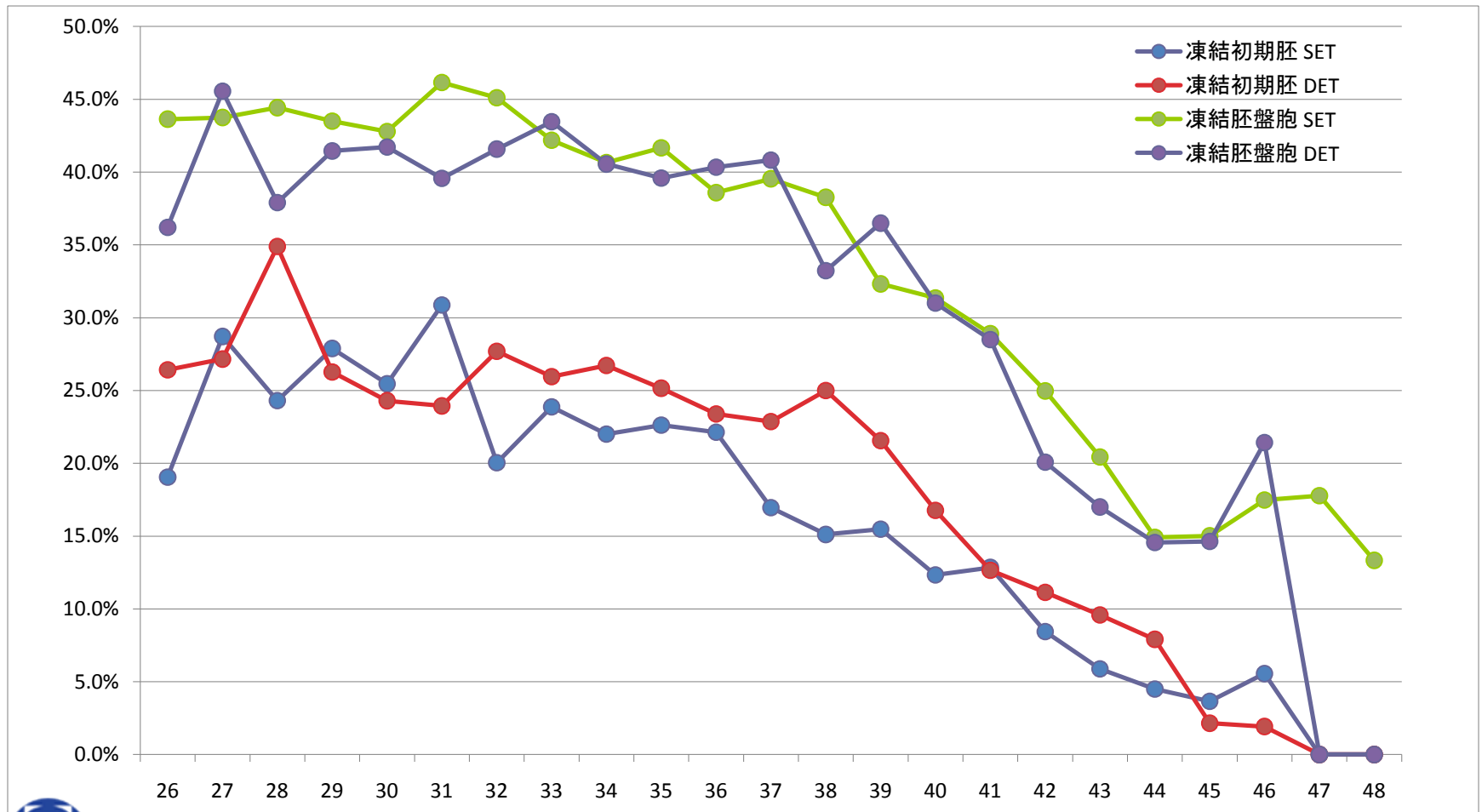
# 妊娠率(移植あたり)

## (移植時期 個数別、新鮮胚)



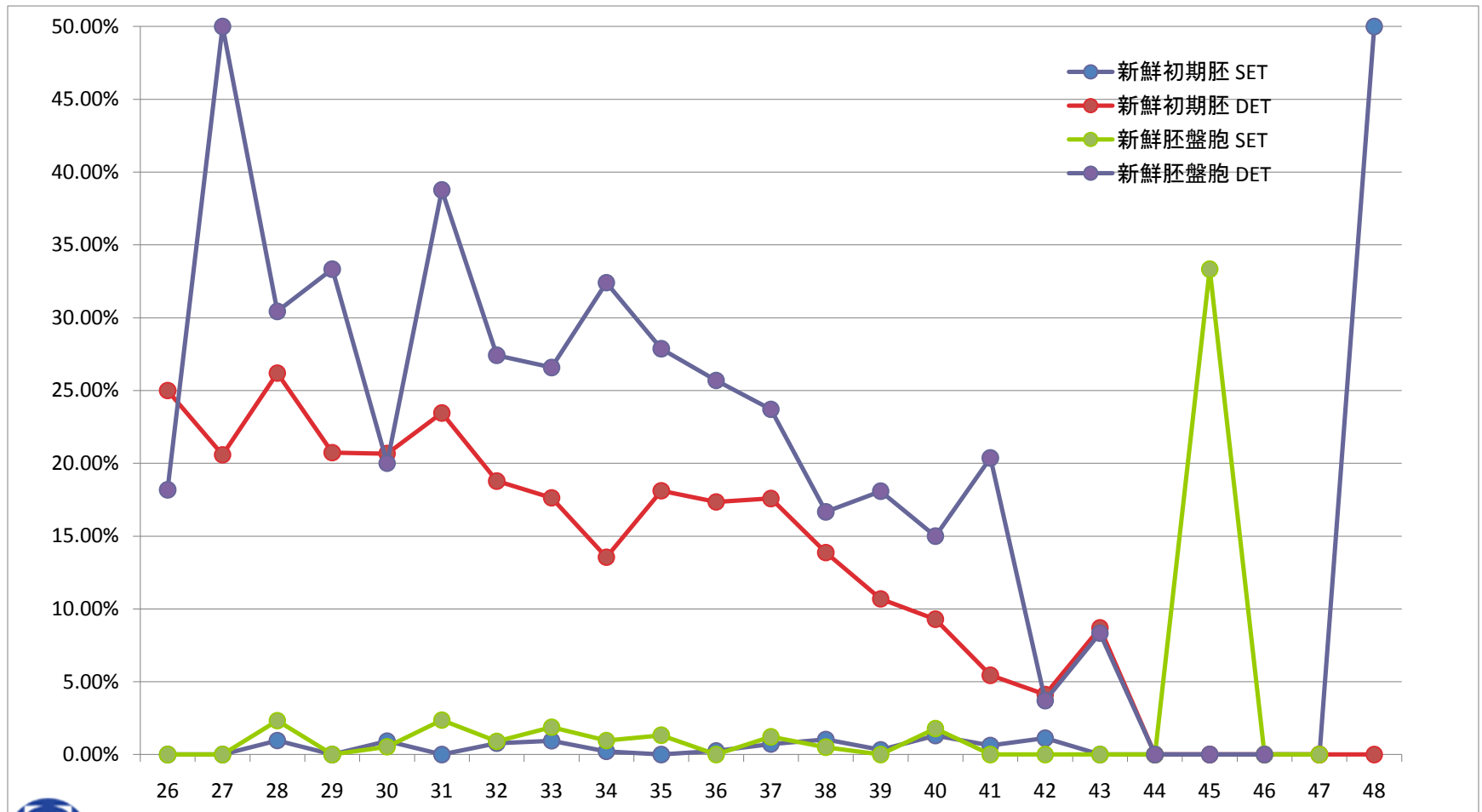
# 妊娠率（移植あたり）

## （移植時期 個数別、凍結胚）

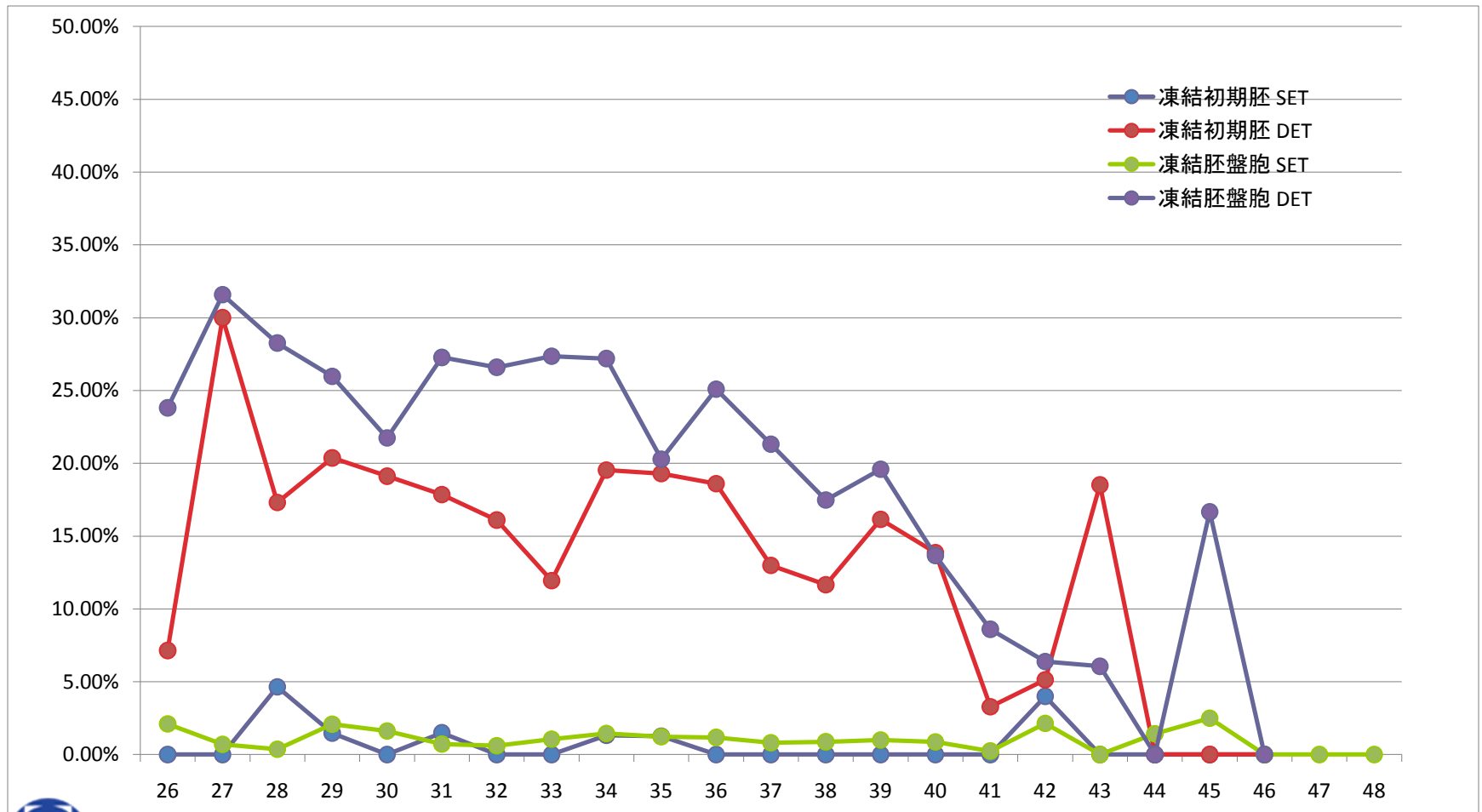


# 多胎率(妊娠あたり)

(移植時期 個数別、新鮮胚)

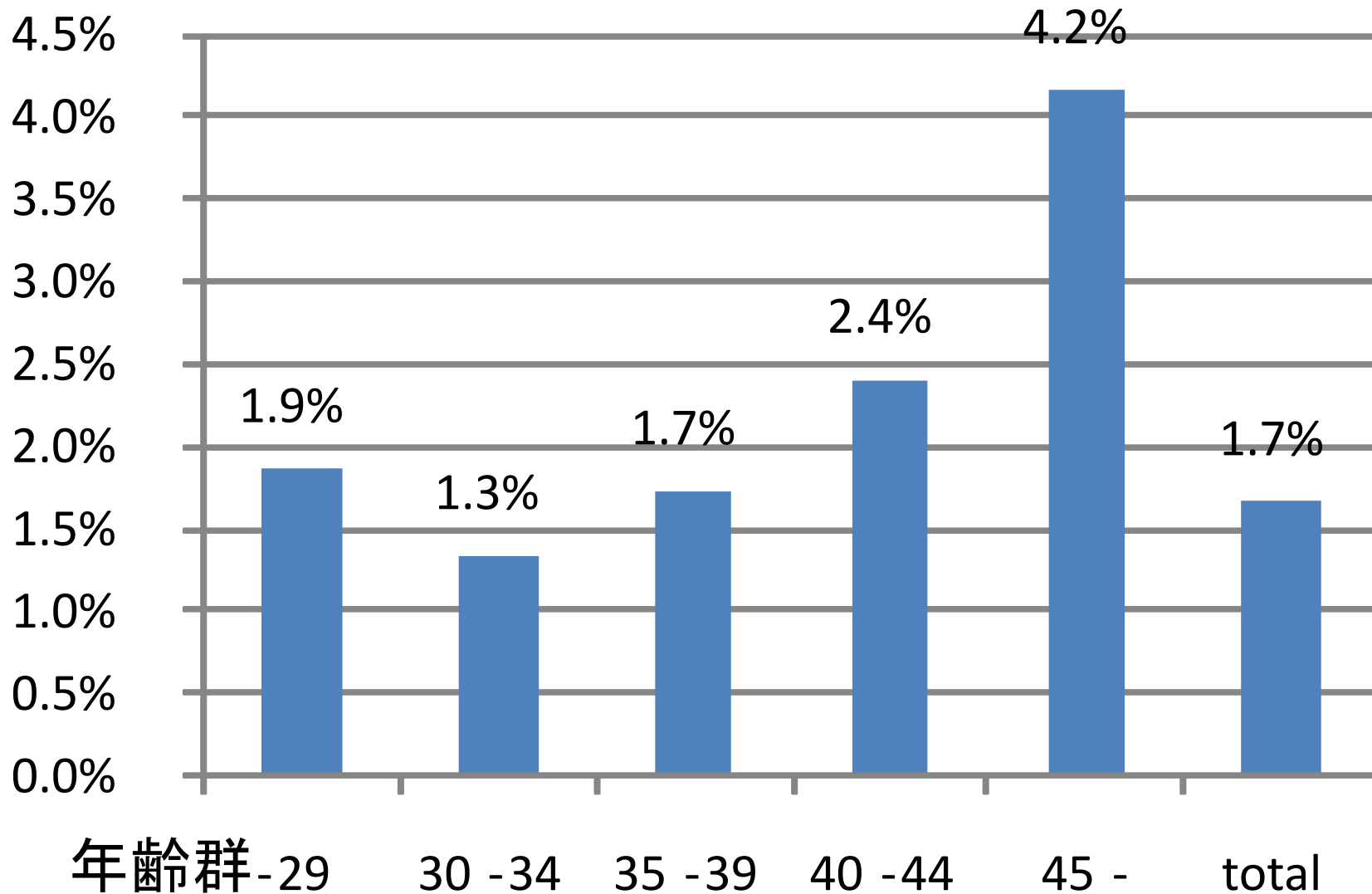


# 多胎率(妊娠あたり) (移植時期 個数別、凍結胚)



# 先天異常率(2008年ART)

(先天異常/生產+死產+人工流產)



# 年齢別データ

年齢別	全体									年齢別	妊娠率								多胎率								年齢別				
	総治療 周期数	ET数	妊娠数	生産数	妊娠率 (/治療)	妊娠率 (/ET)	生産率 (/治療)	流产率 (/妊娠)	新鮮				凍結				新鮮				凍結										
									初期胚 SET		初期胚 DET	胚盤胞 SET	胚盤胞 DET	初期胚 SET	初期胚 DET	胚盤胞 SET	胚盤胞 DET	初期胚 SET	初期胚 DET	胚盤胞 SET	胚盤胞 DET	初期胚 SET	初期胚 DET	胚盤胞 SET	胚盤胞 DET						
20以下	7	3.0	1	1	14.3%	33.3%	14.3%	0.0%	20以下	0.0%				100.0%				0.0%							0.00%						20以下
21	19	10	2	1	10.5%	20.0%	5.3%	50.0%	21	0.0%	100.0%	0.0%	100.0%	0.0%	0.0%	0.0%	30.0%	50.0%	0.00%	33.33%	0.00%					0.00%				21	
22	54	35	11	6	20.4%	31.4%	11.1%	18.2%	22	33.3%	42.9%	50.0%	0.0%	0.0%	0.0%	30.0%	50.0%	0.00%	0.00%	0.00%					25.00%	0.00%	100.00%	0.00%	0.00%	22	
23	149	102	47	30	31.5%	46.1%	20.1%	21.3%	23	44.4%	16.7%	37.5%	66.7%	63.6%	20.0%	53.1%	100.0%	0.00%	0.00%	0.00%					25.00%	0.00%	100.00%	0.69%	31.58%	23	
24	267	188	74	53	27.7%	39.4%	19.9%	17.6%	24	38.5%	31.3%	42.3%	50.0%	23.5%	28.6%	46.2%	55.6%	0.00%	0.00%	0.00%					0.00%	0.00%	16.67%	4.35%	50.00%	24	
25	579	423	155	112	26.8%	36.6%	19.3%	17.4%	25	27.5%	37.9%	38.5%	14.3%	30.0%	29.6%	42.4%	56.5%	0.00%	30.00%	0.00%					0.00%	0.00%	25.00%	0.00%	9.09%	25	
26	1042	756	260	170	25.0%	34.4%	16.3%	21.9%	26	25.0%	32.3%	41.3%	50.0%	19.0%	26.4%	43.6%	36.2%	0.00%	25.00%	0.00%					18.18%	0.00%	7.14%	2.11%	23.81%	26	
27	1677	1197	416	286	24.8%	34.8%	17.1%	18.8%	27	27.8%	30.2%	33.6%	44.4%	28.7%	27.2%	43.8%	45.6%	0.00%	20.59%	0.00%					50.00%	0.00%	30.00%	0.69%	31.58%	27	
28	2835	2064	721	493	25.4%	34.9%	17.4%	17.9%	28	26.8%	23.8%	39.1%	38.1%	24.3%	34.9%	44.4%	37.9%	0.96%	26.19%	2.33%					30.43%	4.65%	17.31%	0.36%	28.26%	28	
29	4189	3054	1032	764	24.6%	33.8%	18.2%	14.0%	29	26.0%	30.6%	33.4%	28.0%	27.9%	26.3%	43.5%	41.5%	0.00%	20.73%	0.00%					33.33%	1.47%	20.37%	2.09%	25.97%	29	
30	5788	4205	1472	1027	25.4%	35.0%	17.7%	17.4%	30	25.4%	36.4%	40.1%	35.8%	25.5%	24.3%	42.8%	41.7%	0.93%	20.67%	0.53%					20.00%	0.00%	19.12%	1.62%	21.74%	30	
31	7476	5449	1923	1312	25.7%	35.3%	17.5%	17.8%	31	24.9%	30.4%	39.8%	38.2%	30.9%	23.9%	46.2%	39.6%	0.00%	23.46%	2.37%					38.78%	1.49%	17.86%	0.72%	27.27%	31	
32	8955	6542	2249	1552	25.1%	34.4%	17.3%	17.6%	32	27.9%	30.6%	33.8%	33.8%	20.0%	27.7%	45.1%	41.6%	0.78%	18.78%	0.90%					27.42%	0.00%	16.10%	0.60%	26.60%	32	
33	10991	7938	2666	1783	24.3%	33.6%	16.2%	19.7%	33	26.0%	29.9%	34.8%	35.5%	23.9%	25.9%	42.2%	43.5%	0.94%	17.62%	1.88%					26.58%	0.00%	11.94%	1.05%	27.35%	33	
34	13109	9372	3027	2021	23.1%	32.3%	15.4%	19.8%	34	24.3%	29.1%	35.2%	36.2%	22.0%	26.7%	40.7%	40.6%	0.21%	13.55%	0.96%					32.41%	1.32%	19.54%	1.45%	27.20%	34	
35	14658	10442	3316	2156	22.6%	31.8%	14.7%	20.7%	35	24.4%	28.7%	33.0%	31.1%	22.6%	25.2%	41.7%	39.6%	0.00%	18.11%	1.32%					27.87%	1.27%	19.29%	1.22%	20.29%	35	
36	14440	10206	3078	2007	21.3%	30.2%	13.9%	22.4%	36	21.1%	27.8%	33.3%	29.0%	22.1%	23.4%	38.6%	40.3%	0.24%	17.35%	0.00%					25.69%	0.00%	18.60%	1.18%	25.09%	36	
37	14259	9815	2860	1781	20.1%	29.1%	12.5%	25.7%	37	20.7%	24.9%	30.5%	29.3%	16.9%	22.9%	39.5%	40.8%	0.72%	17.58%	1.21%					23.71%	0.00%	12.99%	0.81%	21.32%	37	
38	14554	9649	2596	1584	17.8%	26.9%	10.9%	27.2%	38	18.4%	21.7%	28.5%	29.0%	15.1%	25.0%	38.3%	33.2%	1.04%	13.87%	0.50%					16.67%	0.00%	11.66%	0.88%	17.48%	38	
39	14465	9269	2192	1212	15.2%	23.6%	8.4%	32.0%	39	15.2%	21.1%	25.1%	23.6%	15.5%	21.6%	32.3%	36.5%	0.33%	10.69%	0.00%					18.09%	0.00%	16.15%	1.00%	19.59%	39	
40	13776	8457	1766	947	12.8%	20.9%	6.9%	33.9%	40	13.1%	18.1%	20.0%	23.1%	12.3%	16.8%	31.4%	31.0%	1.30%	9.29%	1.79%					15.00%	0.00%	13.86%	0.87%	13.66%	40	
41	11897	6689	1186	603	10.0%	17.7%	5.1%	40.0%	41	10.0%	13.3%	15.8%	20.6%	12.8%	12.7%	28.9%	28.5%	0.62%	5.44%	0.00%					20.37%	0.00%	3.28%	0.24%	8.60%	41	
42	9245	4897	654	270	7.1%	13.4%	2.9%	49.7%	42	7.4%	11.5%	12.2%	14.2%	8.4%	11.1%	25.0%	20.1%	1.12%	4.12%	0.00%					3.70%	4.00%	5.13%	2.14%	6.38%	42	
43	9004	4271	438	159	4.9%	10.3%	1.8%	53.4%	43	4.9%	6.1%	8.7%	14.4%	5.9%	9.6%	20.4%	17.0%	0.00%	8.70%	0.00%					8.33%	0.00%	18.52%	0.00%	6.06%	43	
44	6928	2975	205	48	3.0%	6.9%	0.7%	66.8%	44	3.6%	3.1%	4.3%	4.7%	4.5%	7.9%	14.9%	14.6%	0.00%	0.00%	0.00%					0.00%	0.00%	0.00%	1.43%	0.00%	44	
45	4779	1742	96	31	2.0%	5.5%	0.6%	62.5%	45	2.3%	3.5%	5.2%	4.3%	3.6%	2.2%	15.0%	14.6%	0.00%	0.00%	33.33%				0.00%	0.00%	0.00%	0.00%	2.50%	16.67%	45	
46	2650	882	42	5	1.6%	4.8%	0.2%	83.3%	46	1.3%	2.3%	3.6%	8.3%	5.6%	1.9%	17.5%	21.4%	0.00%	0.00%	0.00%					0.00%	0.00%	0.00%	0.00%	0.00%	46	
47	1453	403	13	1	0.9%	3.2%	0.1%	92.3%	47	1.0%	3.9%	7.1%	0.0%	0.0%	0.0%	17.8%	0.0%	0.00%	0.00%	0.00%								0.00%		47	
48	770	207	7	6	0.9%	3.4%	0.8%	14.3%	48	1.6%	4.5%	0.0%		0.0%	0.0%	13.3%	0.0%	50.00%	0.00%									0.00%		48	
49	372	97	3	0	0.8%	3.1%	0.0%	100.0%	49	0.0%	0.0%	0.0%	100.0%	0.0%	0.0%					0.00%										49	
50以上	232	60	3	1	1.3%	5.0%	0.4%	66.7%	50以上	2.8%	0.0%			0.0%	50.0%	33.3%												0.00%	0.00%	50以上	

