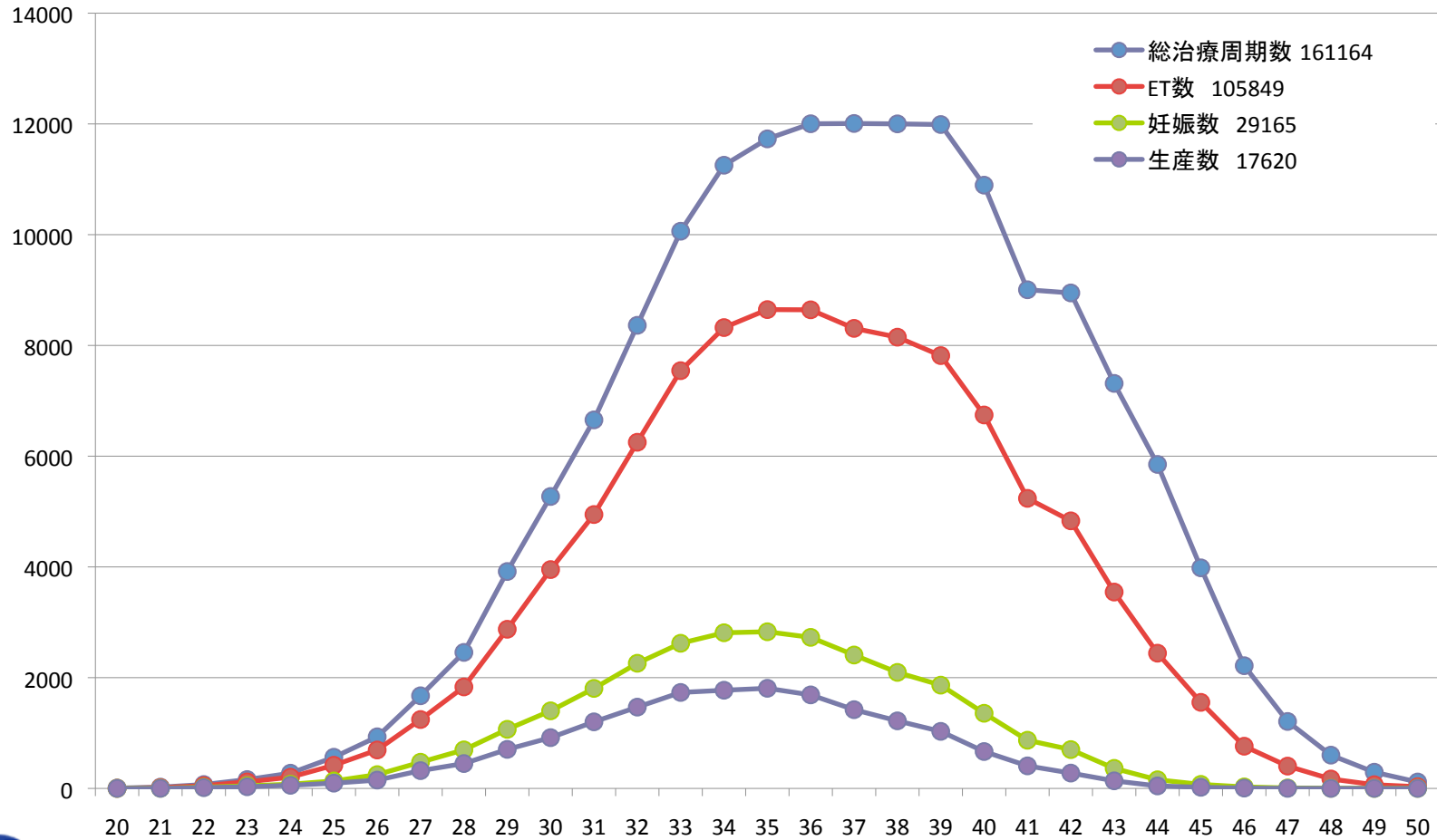
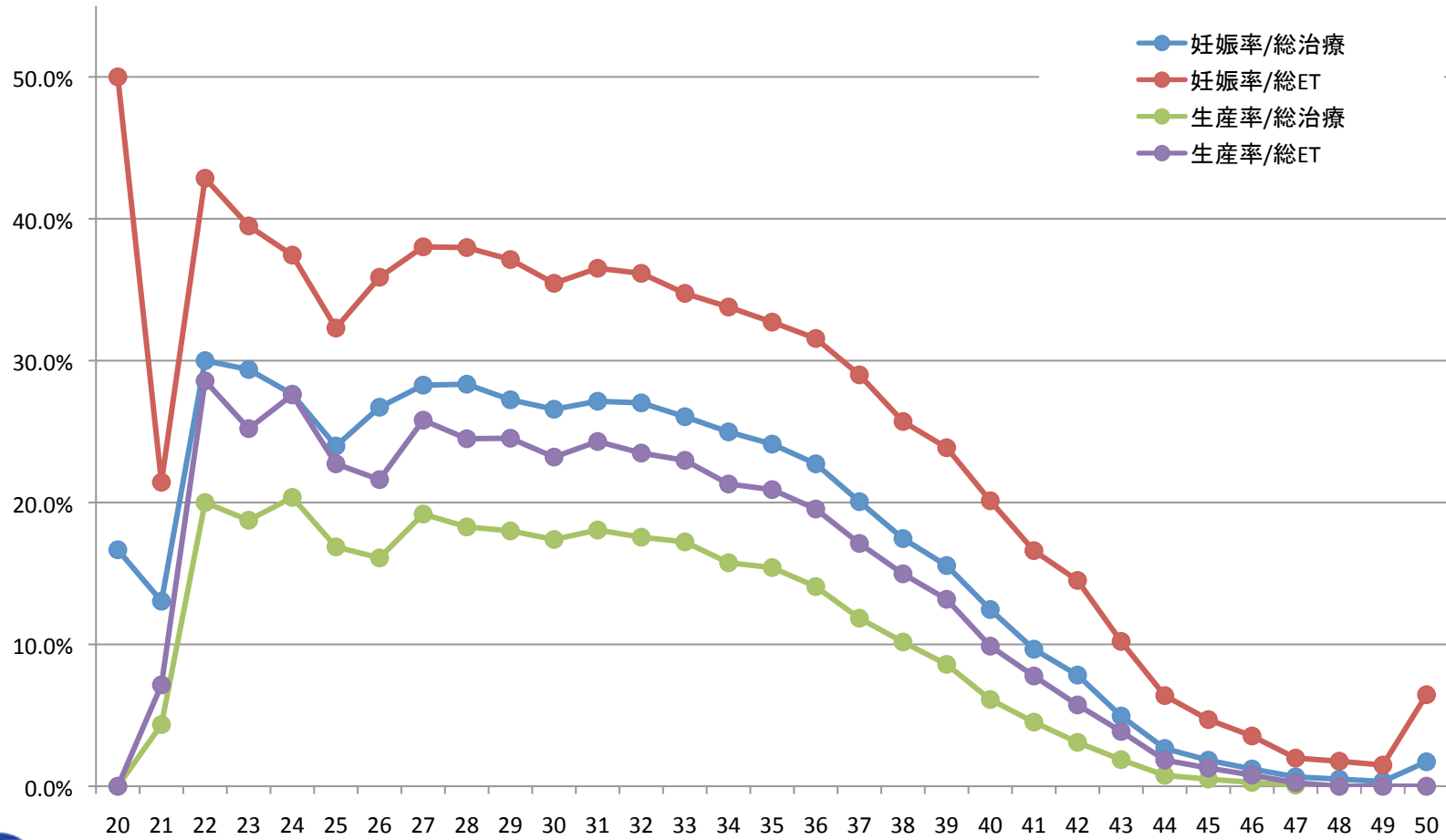


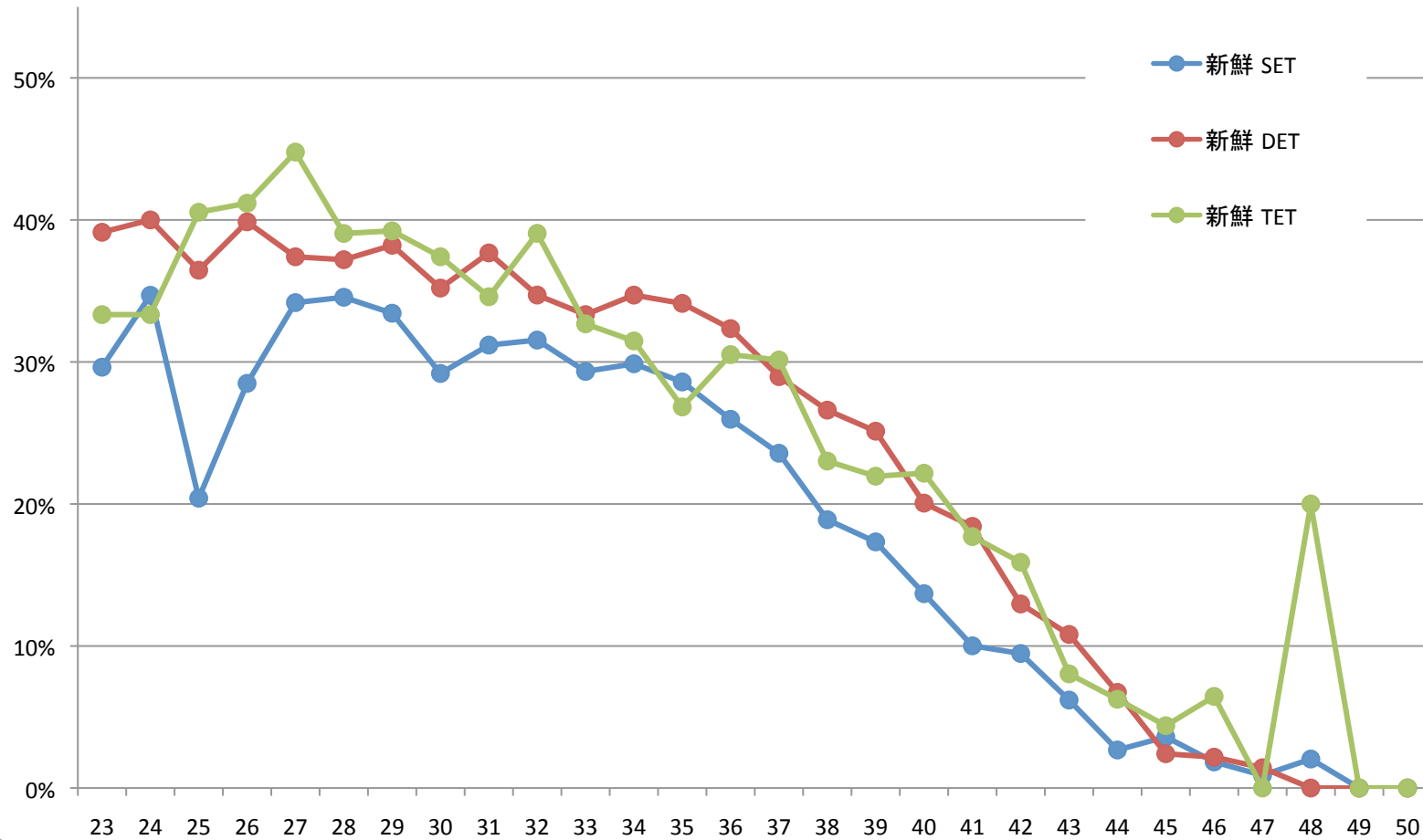
# 治療総数 2007



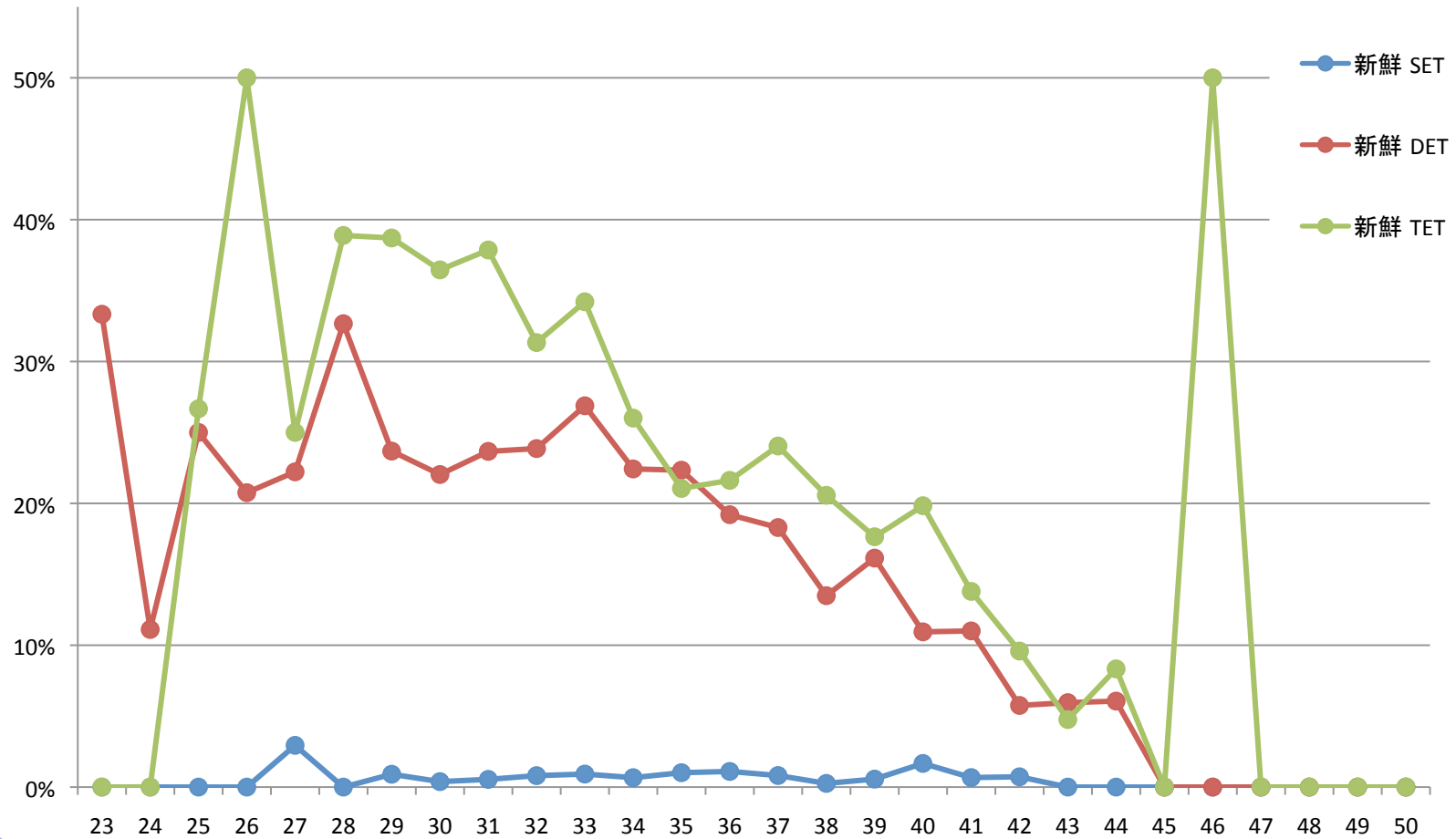
# 治療成績 2007



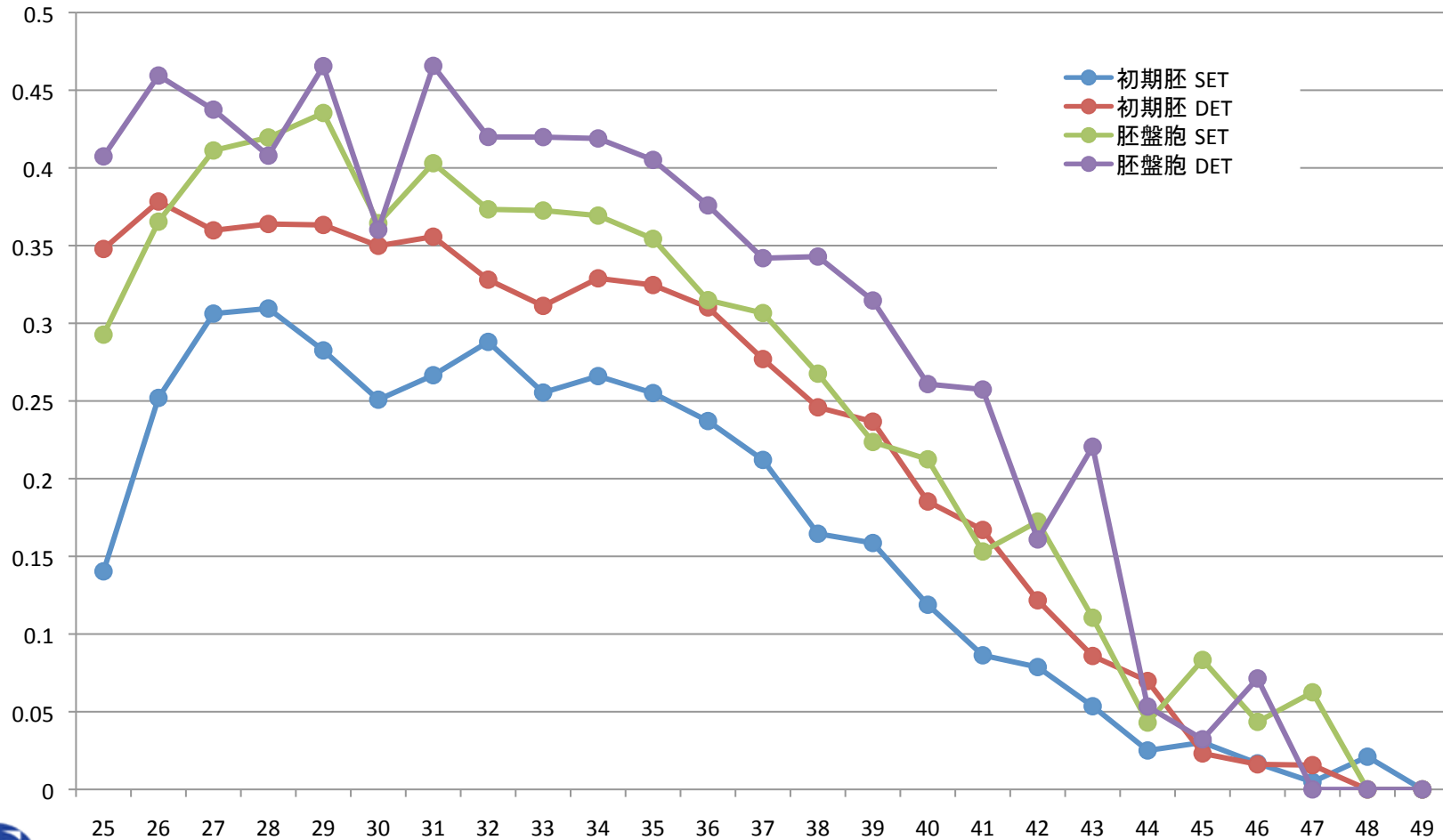
# 移植胚数別 妊娠率 (移植あたり、新鮮胚移植)



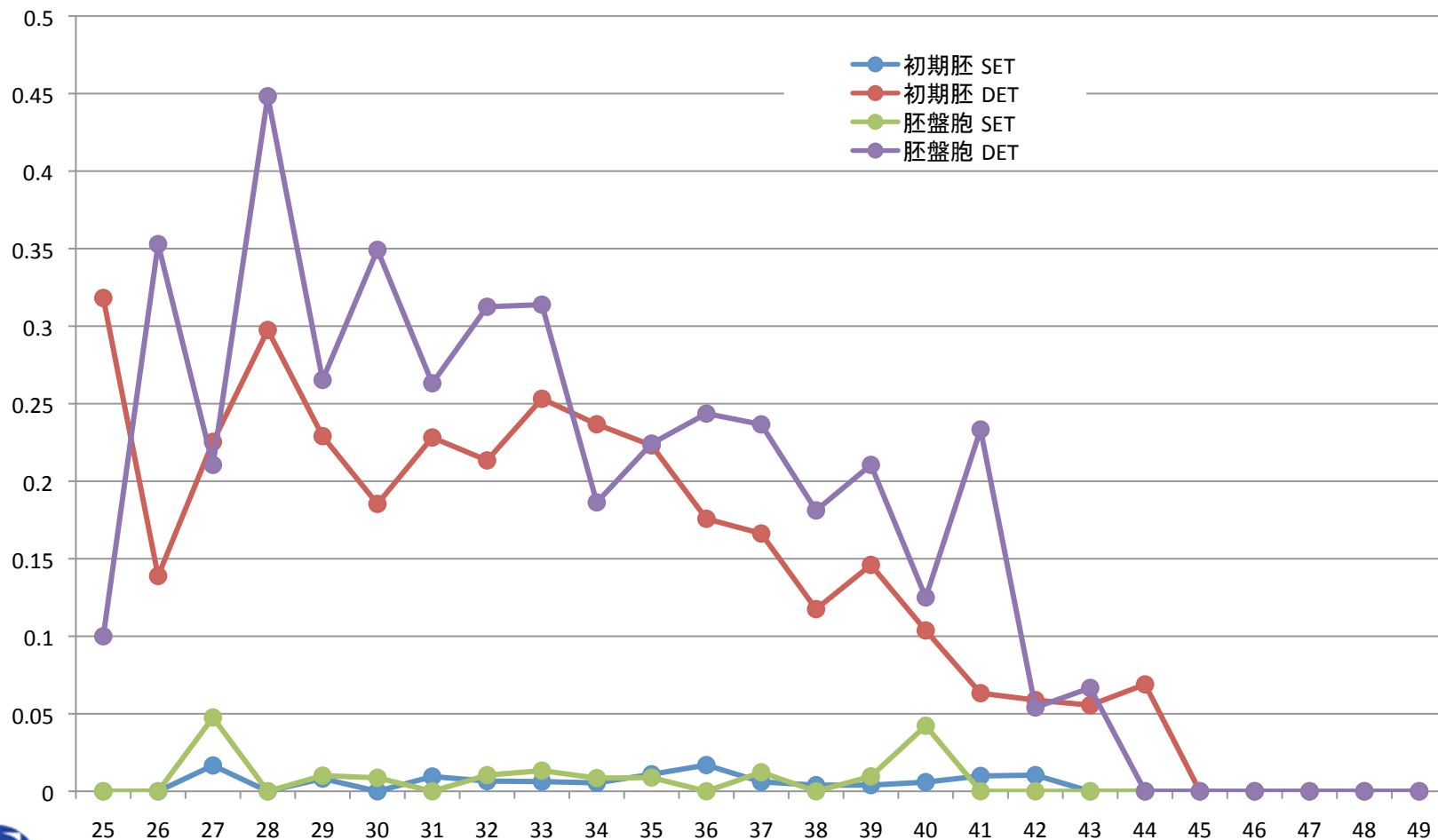
# 移植胚数別 多胎率 (移植あたり、新鮮胚移植)



# 移植胚数・ステージ別 妊娠率 (移植あたり、新鮮胚移植)



# 移植胚数・ステージ別 多胎率 (移植あたり、新鮮胚移植)



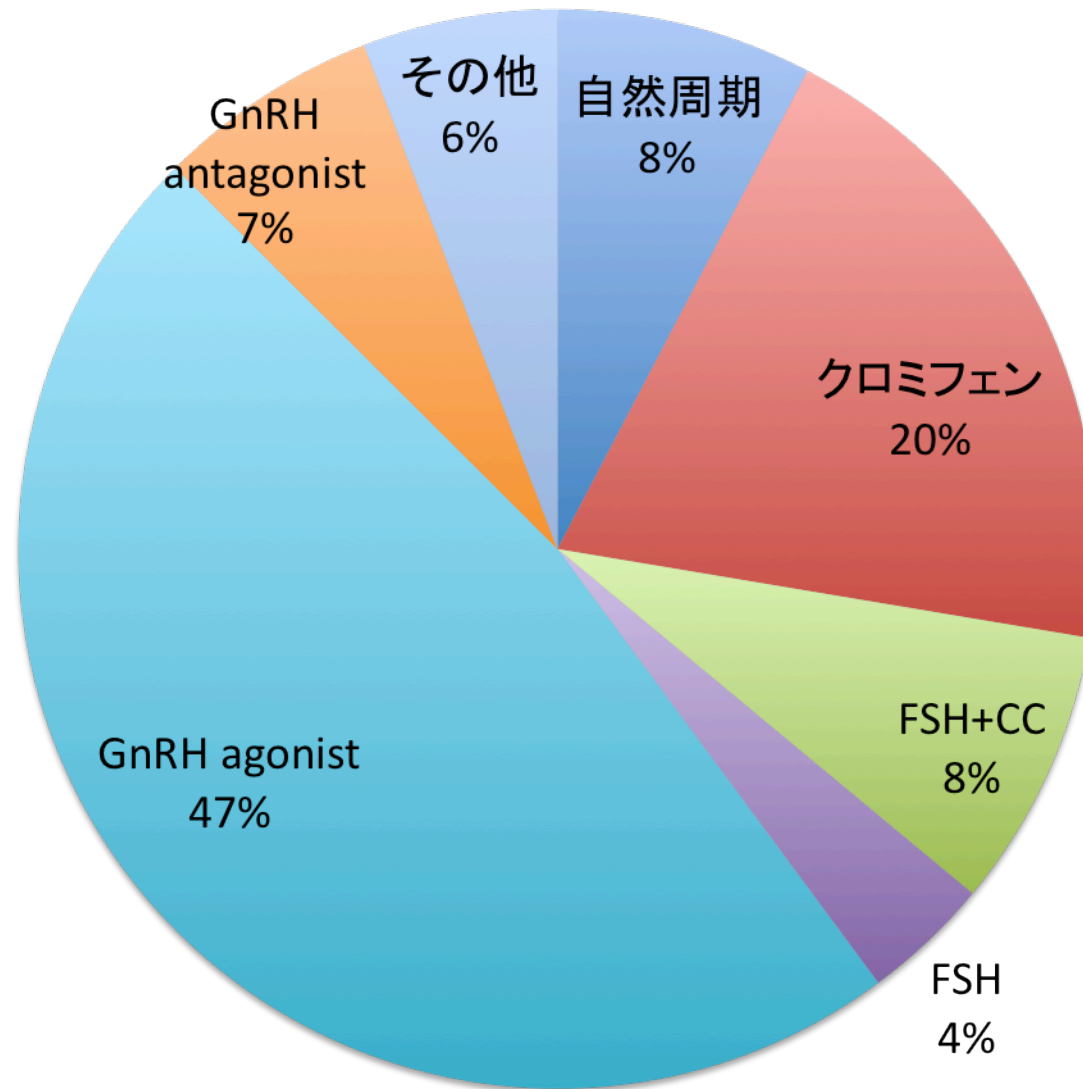
# 年齢別データ

年齢別	妊娠率	妊娠率	生産率	生産率	妊娠率	妊娠率	妊娠率	多胎率	多胎率	多胎率	年齢別	妊娠率	妊娠率	妊娠率	妊娠率	多胎率	多胎率	多胎率	多胎率
	/総治療	/総ET	/総治療	/総ET	新鮮 SET	新鮮 DET	新鮮 TET	新鮮 SET	新鮮 DET	新鮮 TET		初期胚 SET	初期胚 DET	胚盤胞 SET	胚盤胞 DET	初期胚 SET	初期胚 DET	胚盤胞 SET	胚盤胞 DET
20	16.7%	50.0%	0.0%	0.0%	100.0%	0.0%		0.0%			20								
21	13.0%	21.4%	4.3%	7.1%	75.0%	0.0%		0.0%			21								
22	30.0%	42.9%	20.0%	28.6%	55.6%	45.5%	33.3%	0.0%	40.0%	0.0%	22	20.0%	44.4%	100.0%	50.0%	0.0%	25.0%	0.0%	100.0%
23	29.4%	39.5%	18.8%	25.2%	29.6%	39.1%	33.3%	0.0%	33.3%	0.0%	23	25.0%	33.3%	33.3%	60.0%	0.0%	33.3%	0.0%	33.3%
24	27.6%	37.4%	20.4%	27.6%	34.7%	40.0%	33.3%	0.0%	11.1%	0.0%	24	21.9%	35.1%	58.8%	62.5%	0.0%	15.4%	0.0%	0.0%
25	24.0%	32.3%	16.9%	22.7%	20.4%	36.5%	40.5%	0.0%	25.0%	26.7%	25	14.0%	34.8%	29.3%	40.7%	0.0%	31.8%	0.0%	10.0%
26	26.7%	35.9%	16.1%	21.6%	28.5%	39.9%	41.2%	0.0%	20.8%	50.0%	26	25.2%	37.8%	36.5%	45.9%	0.0%	13.9%	0.0%	35.3%
27	28.3%	38.0%	19.2%	25.8%	34.2%	37.4%	44.8%	2.9%	22.2%	25.0%	27	30.6%	36.0%	41.1%	43.8%	1.7%	22.5%	4.8%	21.1%
28	28.3%	38.0%	18.3%	24.5%	34.6%	37.2%	39.0%	0.0%	32.7%	38.9%	28	31.0%	36.4%	42.0%	40.8%	0.0%	29.8%	0.0%	44.8%
29	27.2%	37.1%	18.0%	24.5%	33.4%	38.2%	39.2%	0.9%	23.7%	38.7%	29	28.3%	36.3%	43.5%	46.6%	0.8%	22.9%	1.0%	26.5%
30	26.6%	35.5%	17.4%	23.2%	29.2%	35.2%	37.4%	0.4%	22.0%	36.5%	30	25.1%	35.0%	36.4%	36.0%	0.0%	18.5%	0.9%	34.9%
31	27.1%	36.5%	18.1%	24.3%	31.2%	37.7%	34.6%	0.5%	23.7%	37.9%	31	26.7%	35.6%	40.3%	46.6%	1.0%	22.8%	0.0%	26.3%
32	27.0%	36.2%	17.6%	23.5%	31.5%	34.7%	39.1%	0.8%	23.9%	31.3%	32	28.8%	32.8%	37.3%	42.0%	0.7%	21.3%	1.0%	31.3%
33	26.0%	34.7%	17.2%	23.0%	29.3%	33.3%	32.7%	0.9%	26.9%	34.2%	33	25.5%	31.1%	37.3%	42.0%	0.6%	25.3%	1.3%	31.4%
34	25.0%	33.8%	15.8%	21.3%	29.9%	34.7%	31.5%	0.7%	22.4%	26.0%	34	26.6%	32.9%	36.9%	41.9%	0.5%	23.7%	0.9%	18.6%
35	24.1%	32.7%	15.4%	20.9%	28.6%	34.1%	26.8%	1.0%	22.3%	21.1%	35	25.5%	26.8%	35.4%	40.5%	1.1%	22.3%	0.9%	22.4%
36	22.7%	31.6%	14.1%	19.5%	26.0%	32.3%	30.5%	1.1%	19.2%	21.6%	36	23.7%	31.0%	31.5%	37.6%	1.7%	17.6%	0.0%	24.4%
37	20.1%	29.0%	11.8%	17.1%	23.6%	29.0%	30.1%	0.8%	18.3%	24.0%	37	21.2%	27.7%	30.7%	34.2%	0.6%	16.6%	1.2%	23.7%
38	17.5%	25.7%	10.2%	15.0%	18.9%	26.6%	23.0%	0.3%	13.5%	20.6%	38	16.5%	24.6%	26.8%	34.3%	0.4%	11.7%	0.0%	18.1%
39	15.6%	23.9%	8.6%	13.2%	17.3%	25.1%	22.0%	0.6%	16.1%	17.6%	39	15.9%	23.7%	22.4%	31.5%	0.4%	14.6%	1.0%	21.1%
40	12.5%	20.1%	6.1%	9.9%	13.7%	20.1%	22.2%	1.7%	10.9%	19.8%	40	11.9%	18.5%	21.2%	26.1%	0.6%	10.4%	4.2%	12.5%
41	9.7%	16.6%	4.5%	7.8%	10.0%	18.4%	17.7%	0.7%	11.0%	13.8%	41	8.6%	16.7%	15.3%	25.7%	1.0%	6.3%	0.0%	23.3%
42	7.8%	14.5%	3.1%	5.7%	9.5%	13.0%	15.9%	0.7%	5.8%	9.6%	42	7.9%	12.2%	17.2%	16.1%	1.0%	5.9%	0.0%	5.4%
43	4.9%	10.2%	1.9%	3.9%	6.2%	10.8%	8.0%	0.0%	6.0%	4.8%	43	5.4%	8.6%	11.0%	22.1%	0.0%	5.6%	0.0%	6.7%
44	2.7%	6.4%	0.8%	1.8%	2.7%	6.7%	6.3%	0.0%	6.1%	8.3%	44	2.5%	7.0%	4.3%	5.3%	0.0%	6.9%	0.0%	0.0%
45	1.8%	4.7%	0.5%	1.3%	3.6%	2.4%	4.4%	0.0%	0.0%	0.0%	45	3.0%	2.3%	8.3%	3.2%	0.0%	0.0%	0.0%	0.0%
46	1.2%	3.5%	0.3%	0.8%	1.8%	2.2%	6.5%	0.0%	0.0%	50.0%	46	1.7%	1.6%	4.3%	7.1%	0.0%	0.0%	0.0%	0.0%
47	0.7%	2.0%	0.1%	0.2%	0.9%	1.4%	0.0%	0.0%	0.0%		47	0.5%	1.6%	6.3%	0.0%	0.0%	0.0%	0.0%	0.0%
48	0.5%	1.8%	0.0%	0.0%	2.0%	0.0%	20.0%			0.0%	48	2.1%	0.0%	0.0%	0.0%	0.0%	0.0%	0.0%	0.0%
49	0.3%	1.5%	0.0%	0.0%	0.0%	0.0%	0.0%				49	0.0%	0.0%	0.0%	0.0%	0.0%	0.0%	0.0%	0.0%
50	1.7%	6.5%	0.0%	0.0%	0.0%	0.0%					50								
51	2.4%	11.1%	1.2%	5.6%	0.0%	0.0%					51								
52	0.0%	0.0%	0.0%	0.0%	0.0%						52								
53	16.7%	50.0%	16.7%	50.0%	0.0%						53								
54											54								
55											55								
56	0.0%	0.0%	0.0%	0.0%							56								



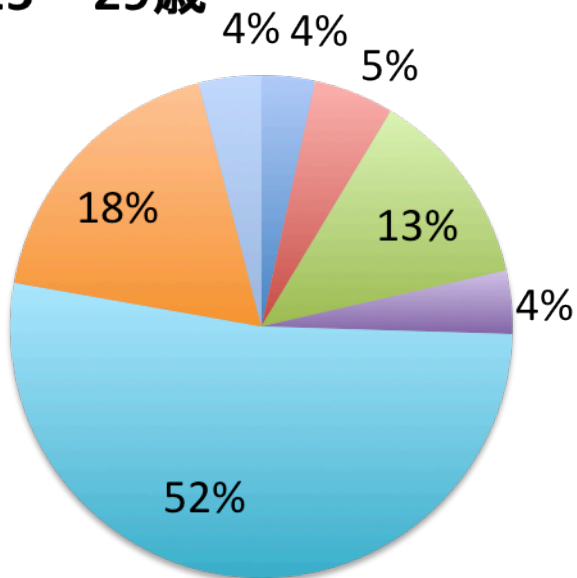
# 刺激方法別分類

治療件数（合計 105157件）

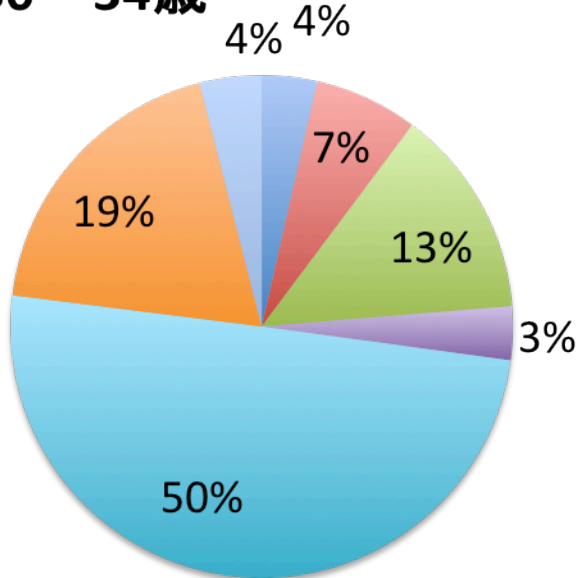




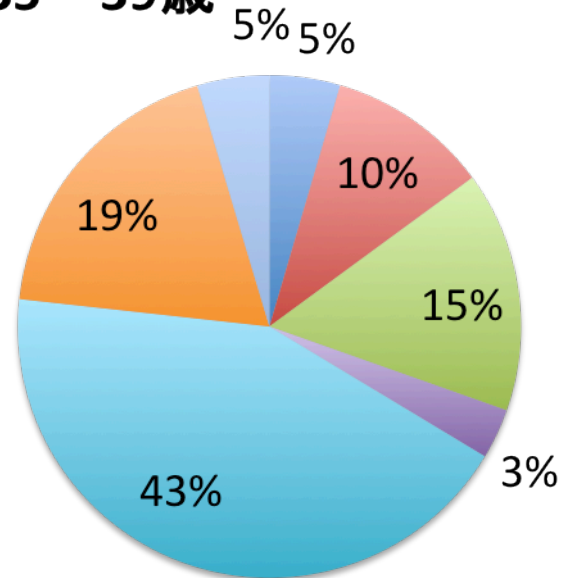
25～29歳



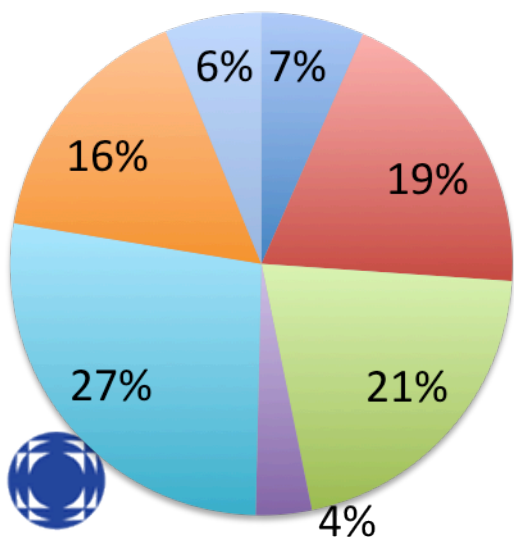
30～34歳



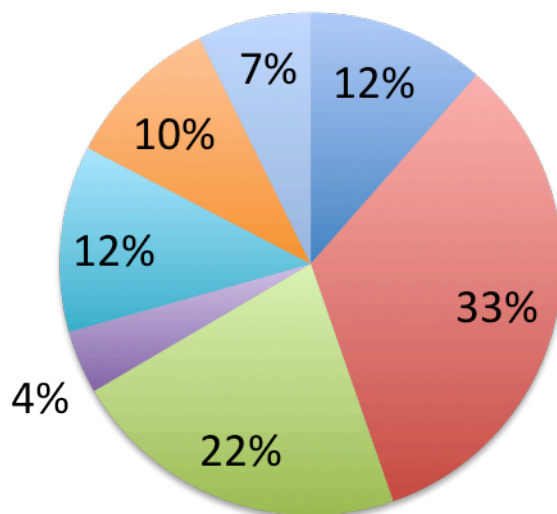
35～39歳



40～44歳



45～49歳

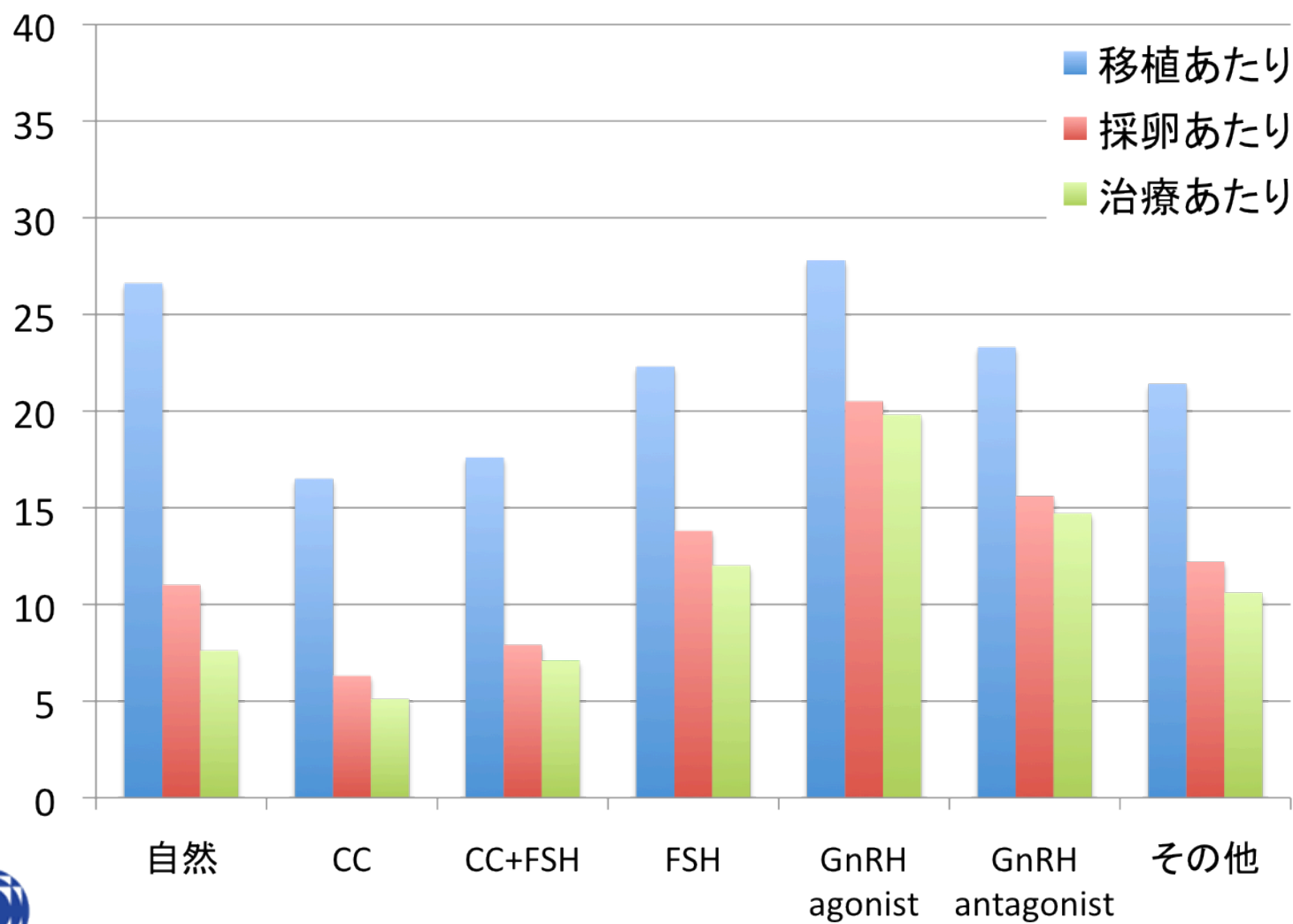


- GnRH agonist
- GnRH antagonist
- 自然
- CC
- CC+FSH
- FSH
- その他



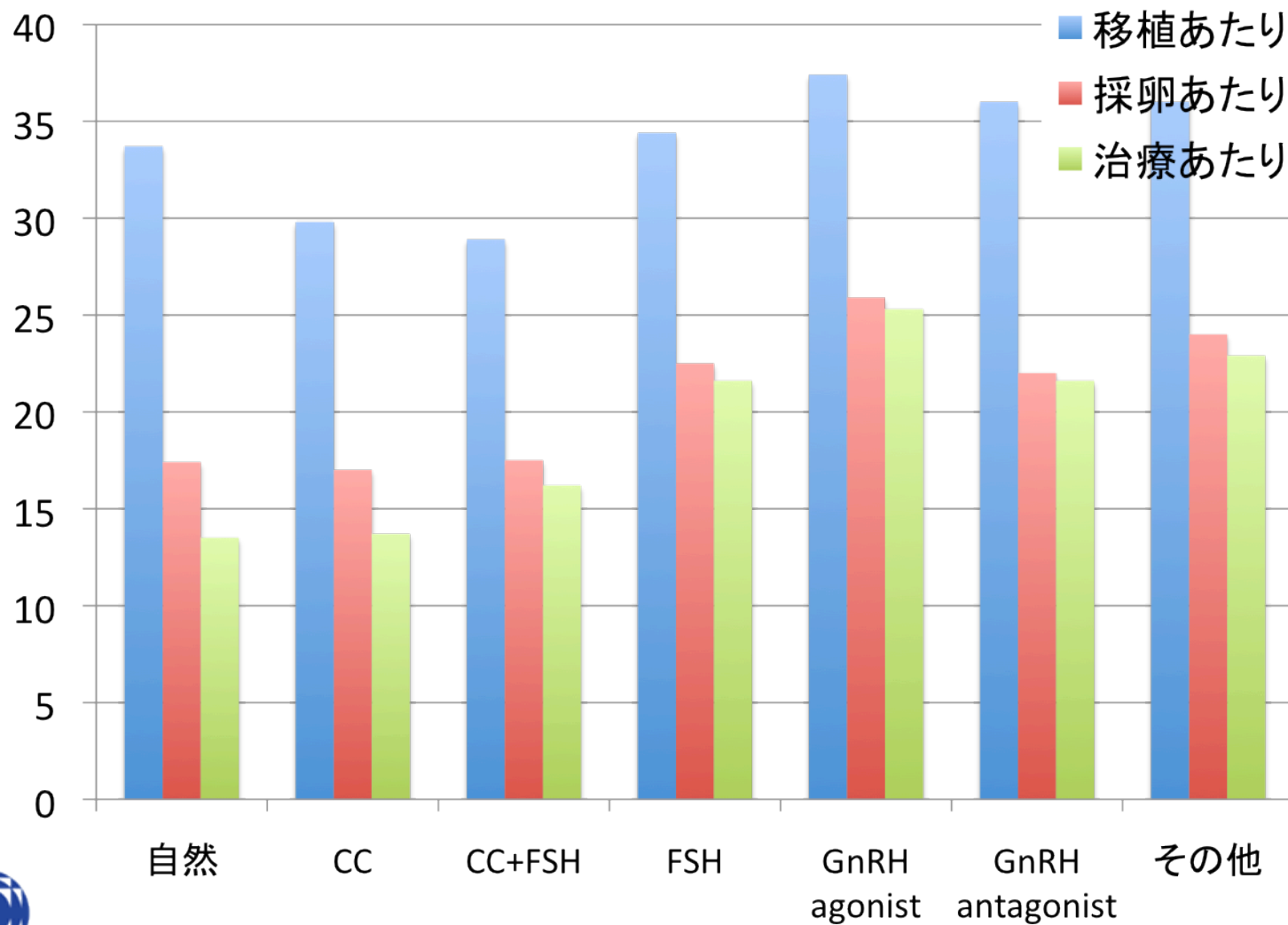
# 刺激方法別 妊娠率

(全年齢)



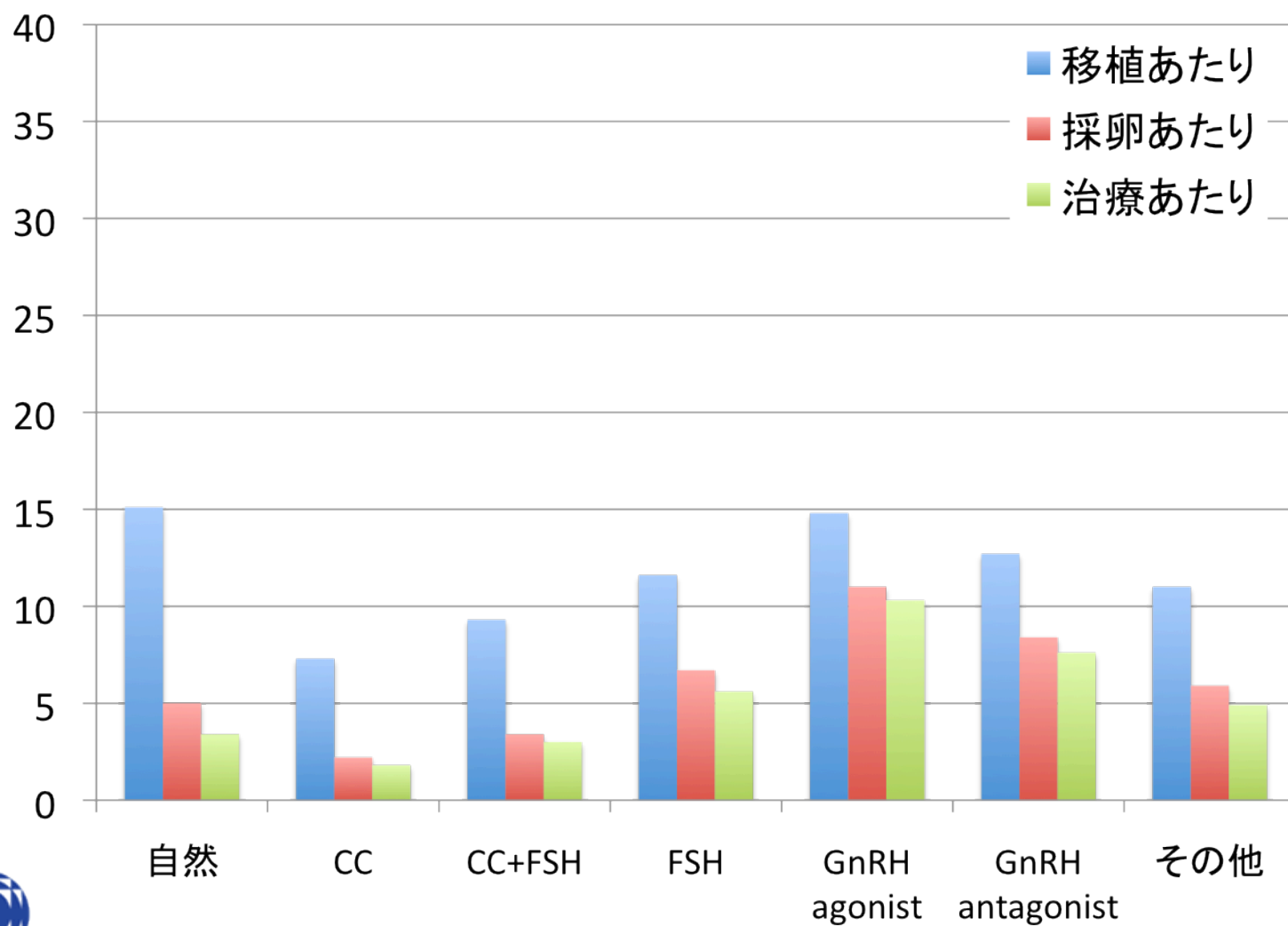
# 刺激方法別 妊娠率

(25-29歳)

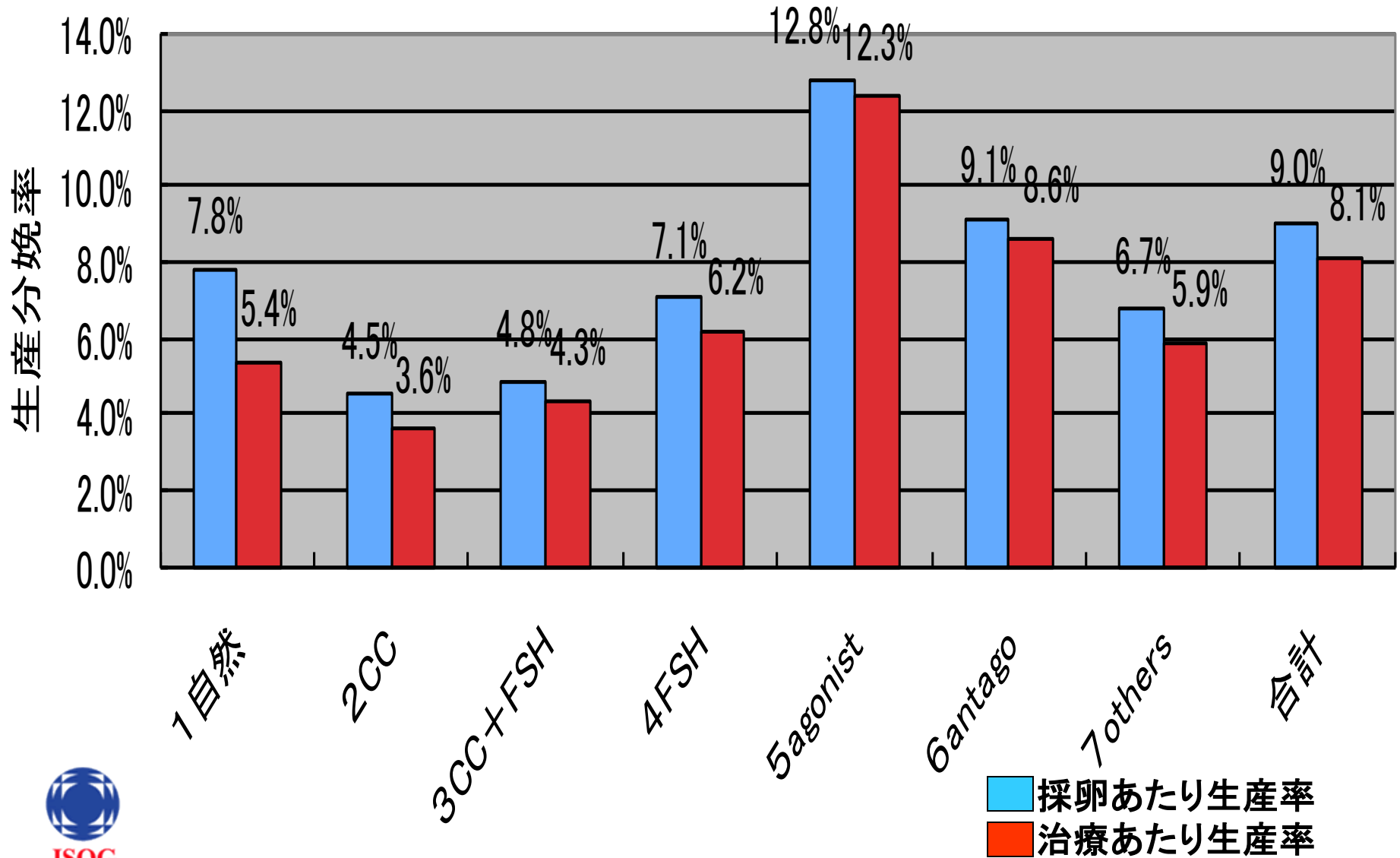


# 刺激方法別 妊娠率

(40-44歳)

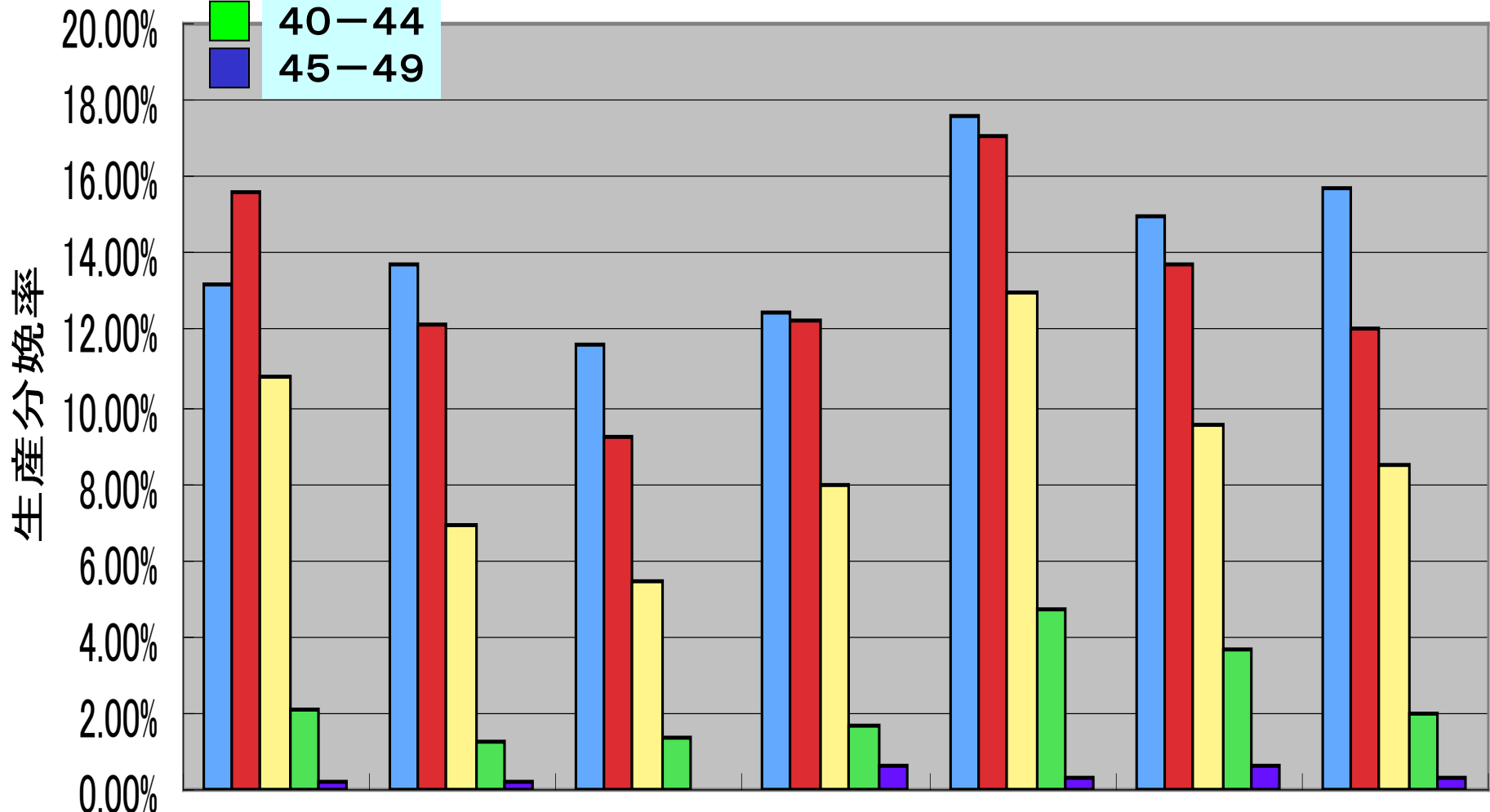


# 排卵誘発法別生産分娩率 (全年齢)



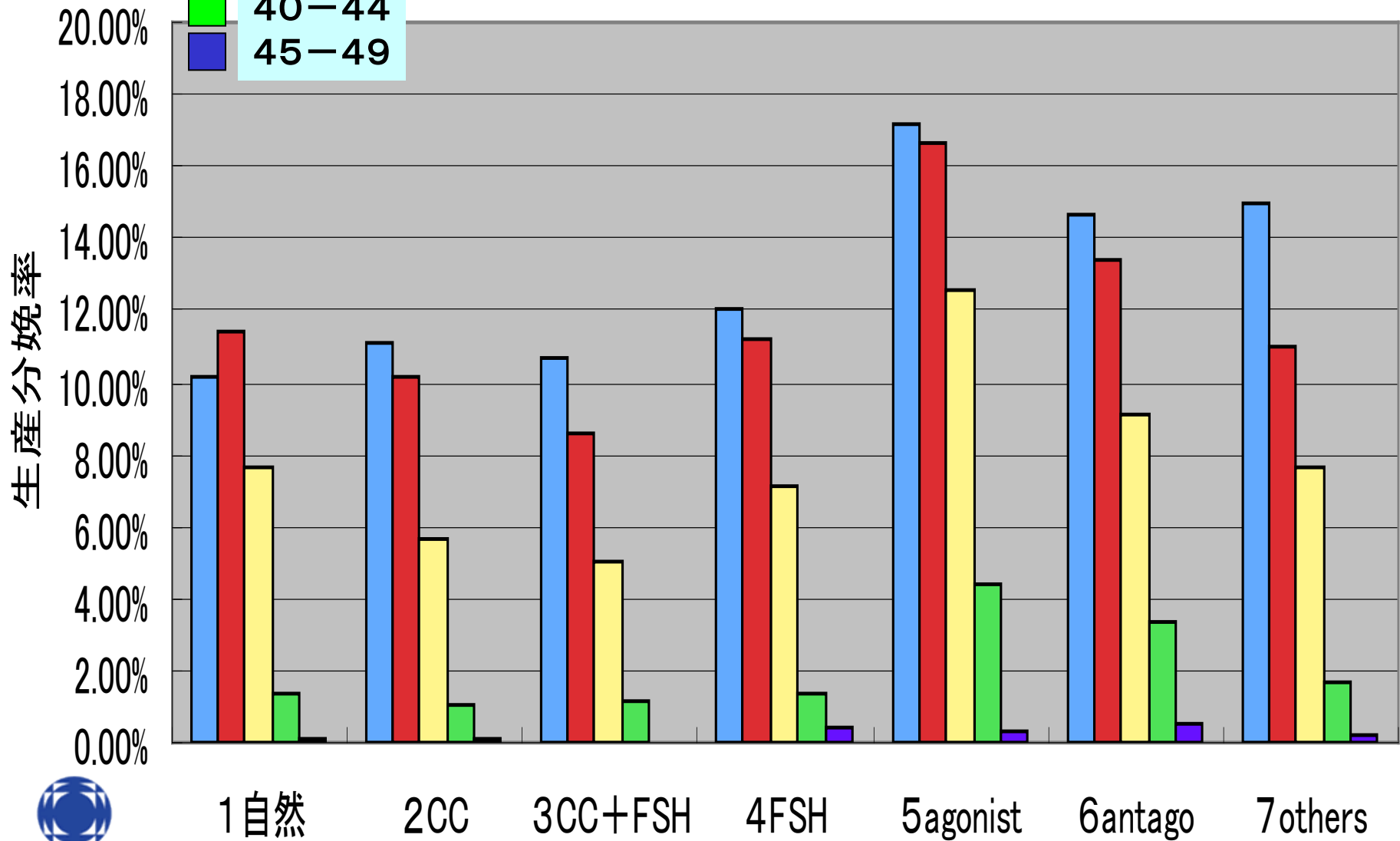
排卵誘発別採卵あたり生産分娩率 (年齢別)

- 25-29
- 30-34
- 35-39
- 40-44
- 45-49



# 排卵誘発別治療あたり生産分娩率 (年齢別)

- 25-29
- 30-34
- 35-39
- 40-44
- 45-49



1自然 2CC 3CC+FSH 4FSH 5agonist 6antago 7others