

27. May 2014 / 33 / 2542467

Community-based solutions for ageing well I: International perspectives on housing and empowerment

# Age Wohnmatrix

Attempt for a new concept

**Analysis of housing for elderly people:  
Using basic needs rather than defined terms**



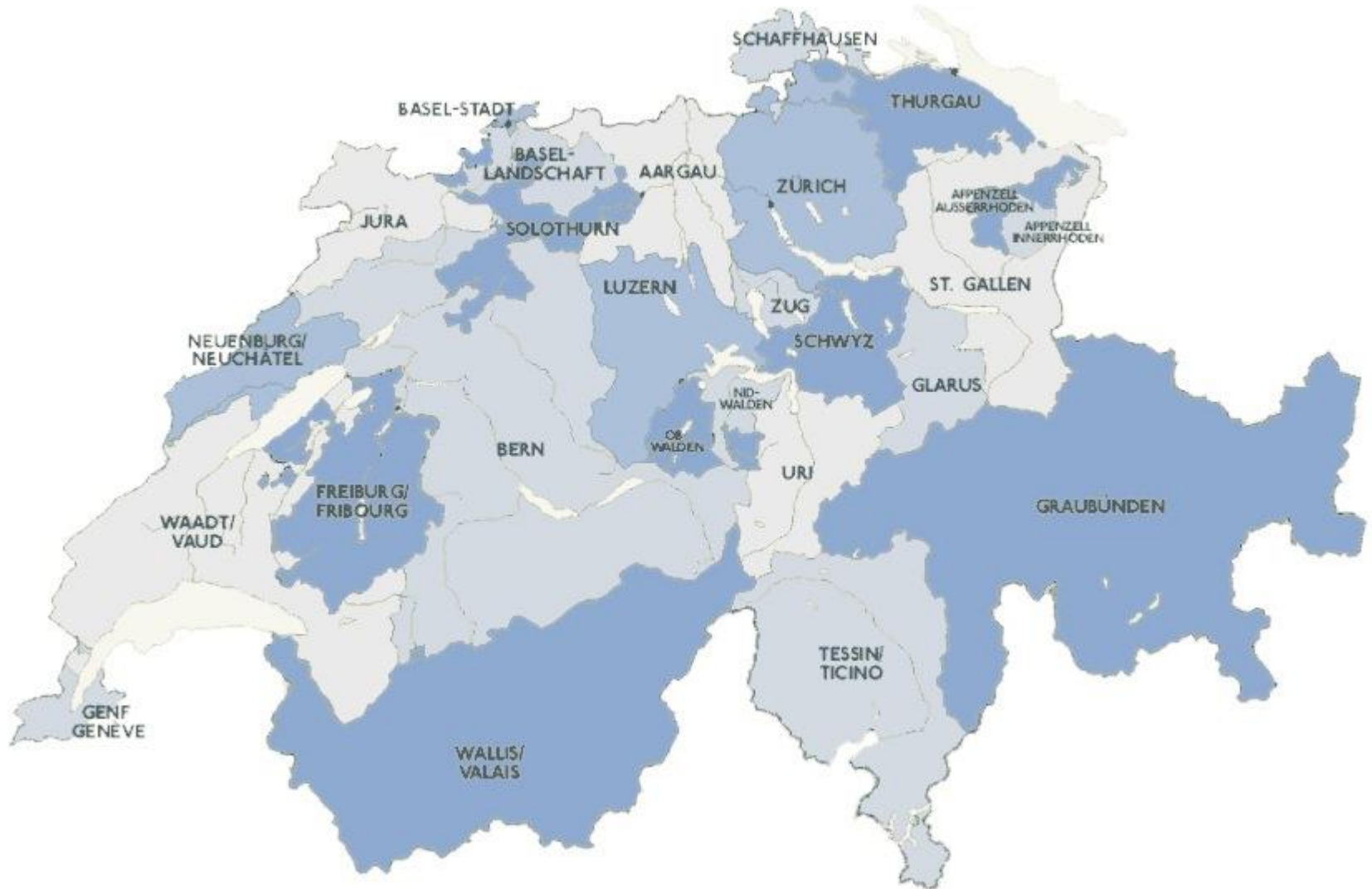
Switzerland



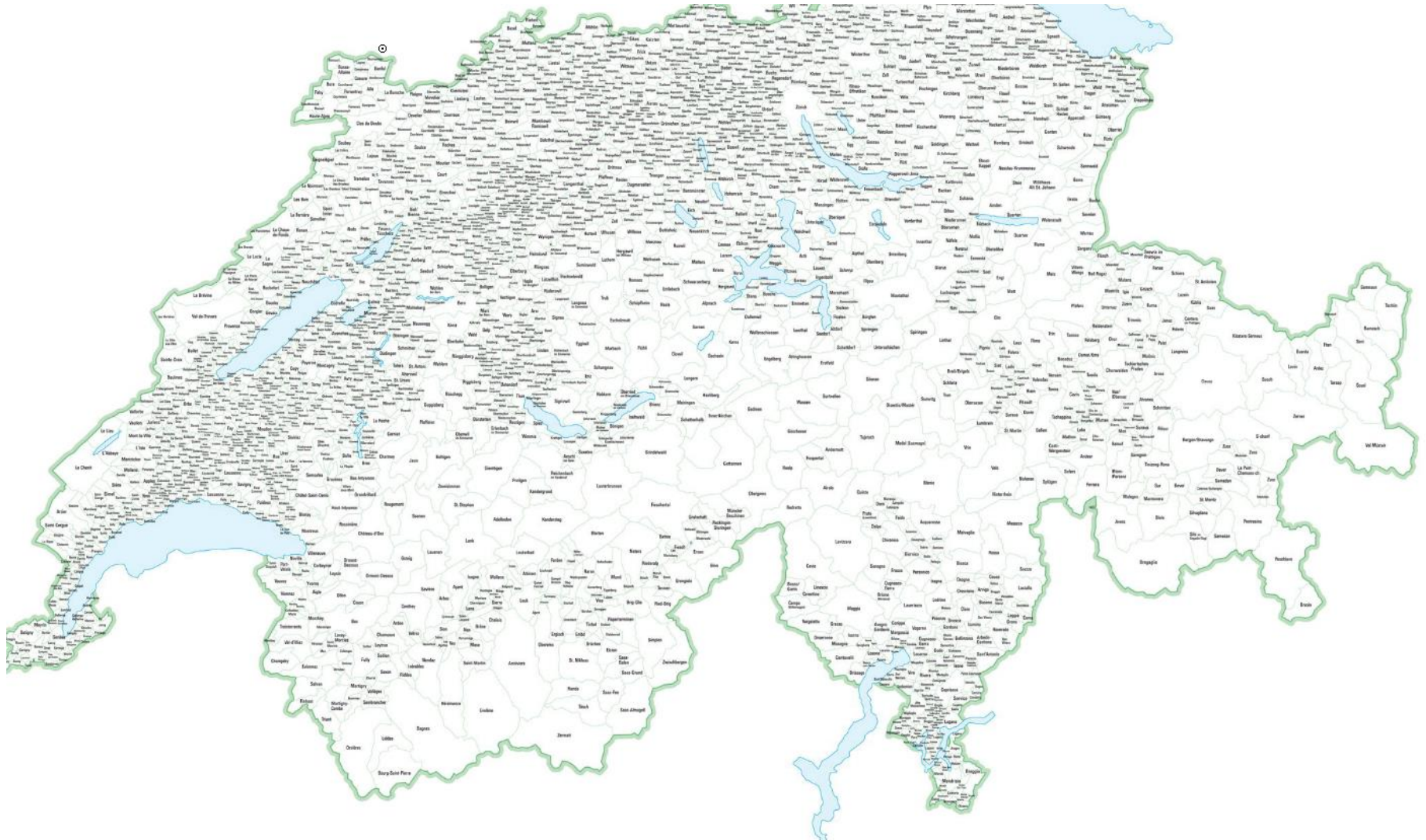
41,277 sq km

	Switzerland	Germany	Sweden
<b>Area</b> sq km	41,277	357,022	450,295
<b>Population</b> July 2014 est	8,061,516	80,996,685	9,723,809
<b>Health expenditure</b> of GDP 2011	10.9%	11.1%	9.4%
<b>Elderly dependency ratio</b> 2013	26.2 %	32.1 %	30.3 %

# 26 Kantone / Cantons



# 2352 Gemeinden / Communities



# Age Wohnmatrix

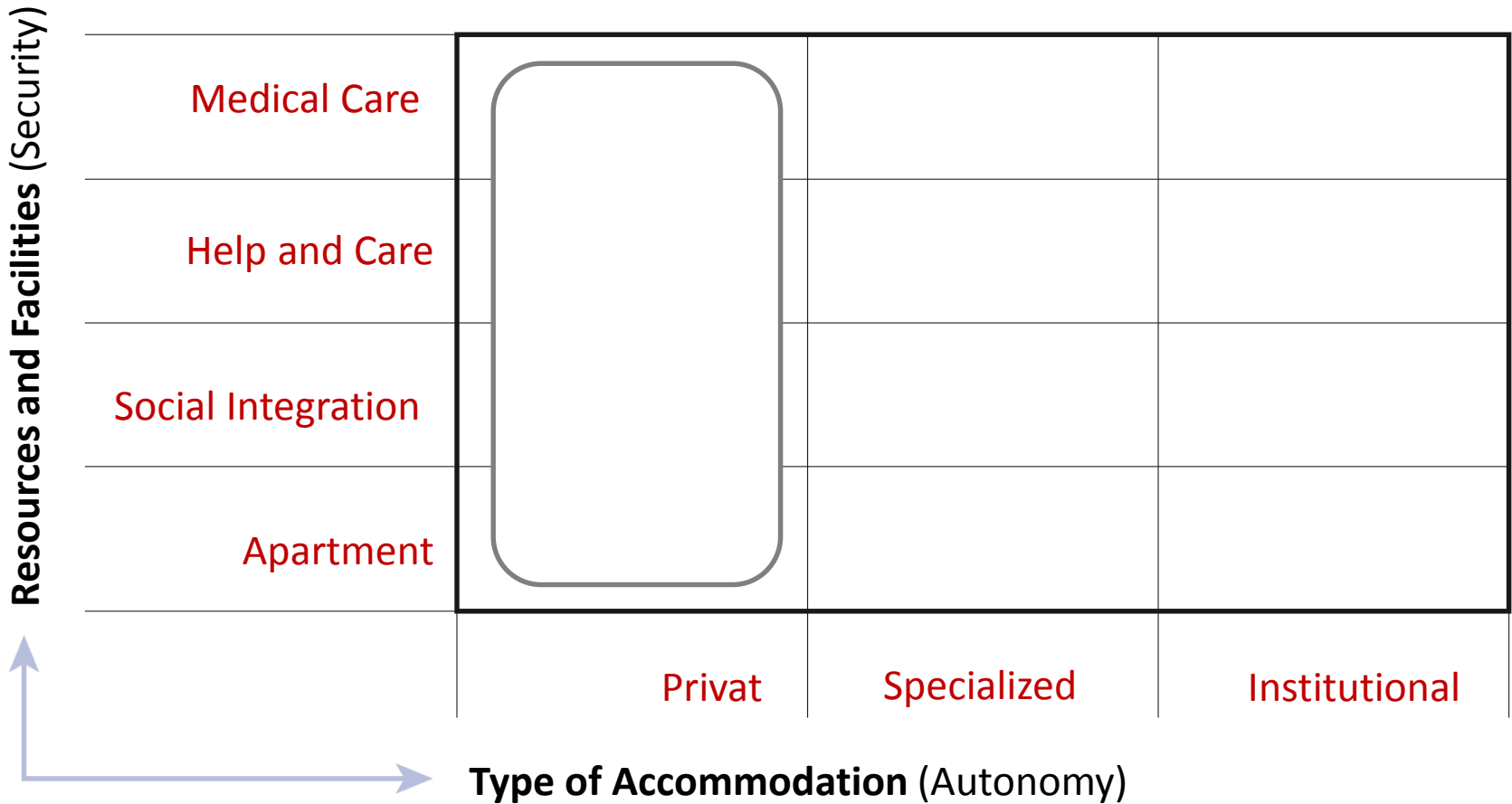
<b>Versorgung (Sicherheit)</b>	Pflege			
	Hilfe & Betreuung			
	Soziale Einbindung			
	Wohnung			
		Privat	Organisiert	Institutionell
		<b>Wohntypus (Autonomie)</b>		

# Age Wohnmatrix

The diagram is a 2D matrix. The vertical axis is labeled 'Resources and Facilities (Security)' and has four categories: Medical Care, Help and Care, Social Integration, and Apartment. The horizontal axis is labeled 'Type of Accommodation (Autonomy)' and has three categories: Privat, Specialized, and Institutional. A blue arrow points upwards along the vertical axis, and another blue arrow points to the right along the horizontal axis.

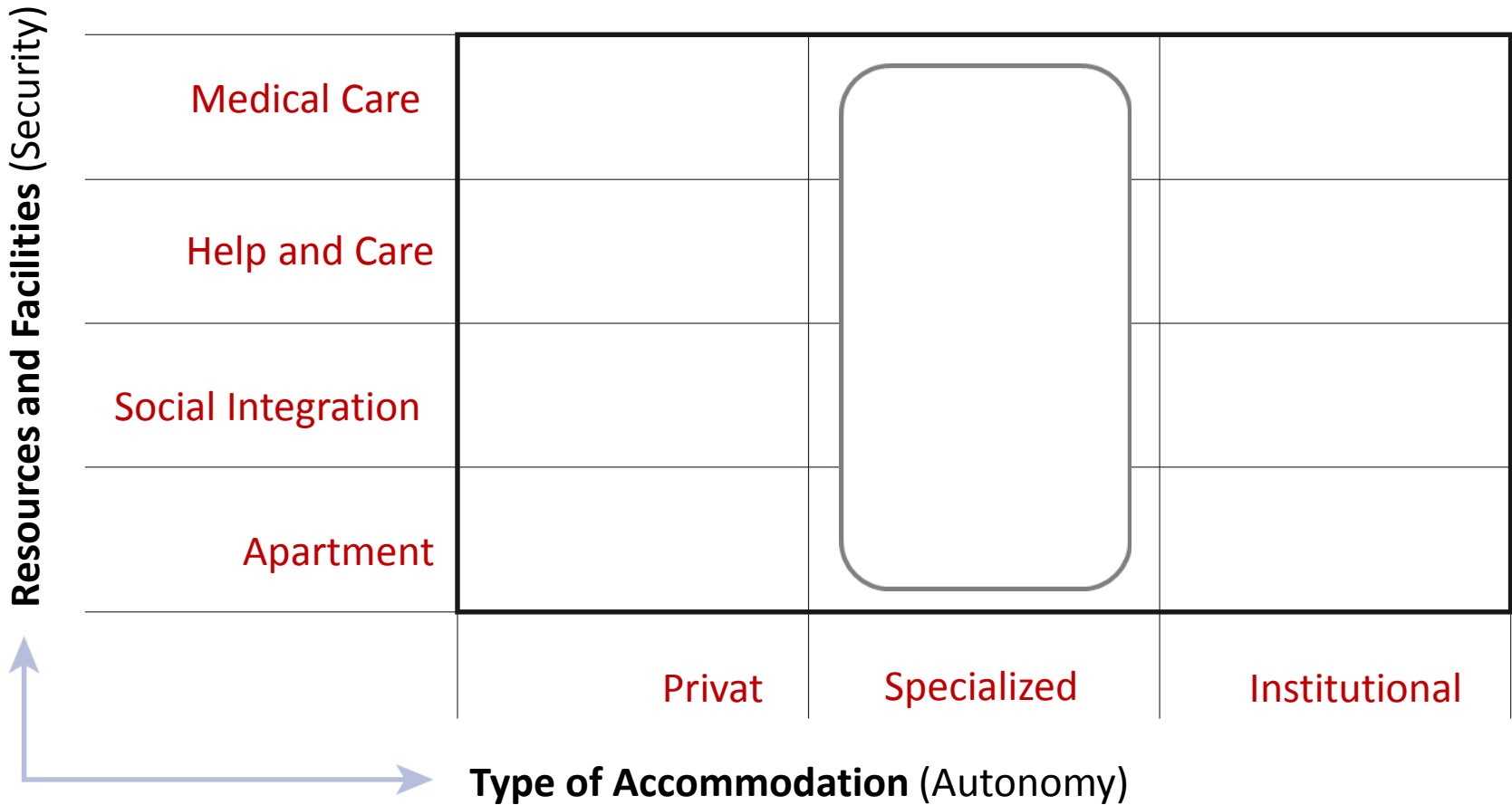
	Privat	Specialized	Institutional
Medical Care			
Help and Care			
Social Integration			
Apartment			

# Age Wohnmatrix

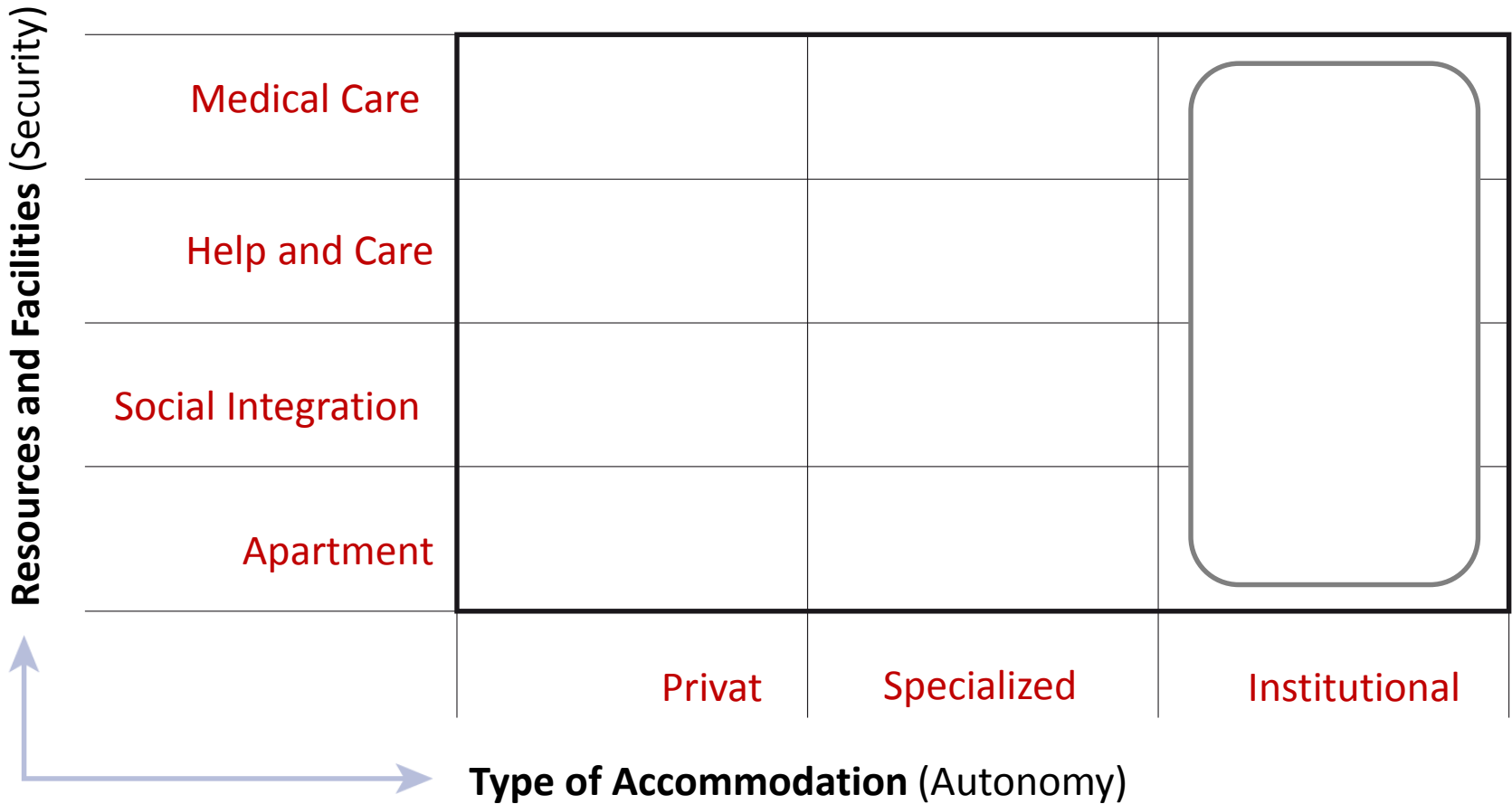




# Age Wohnmatrix



# Age Wohnmatrix



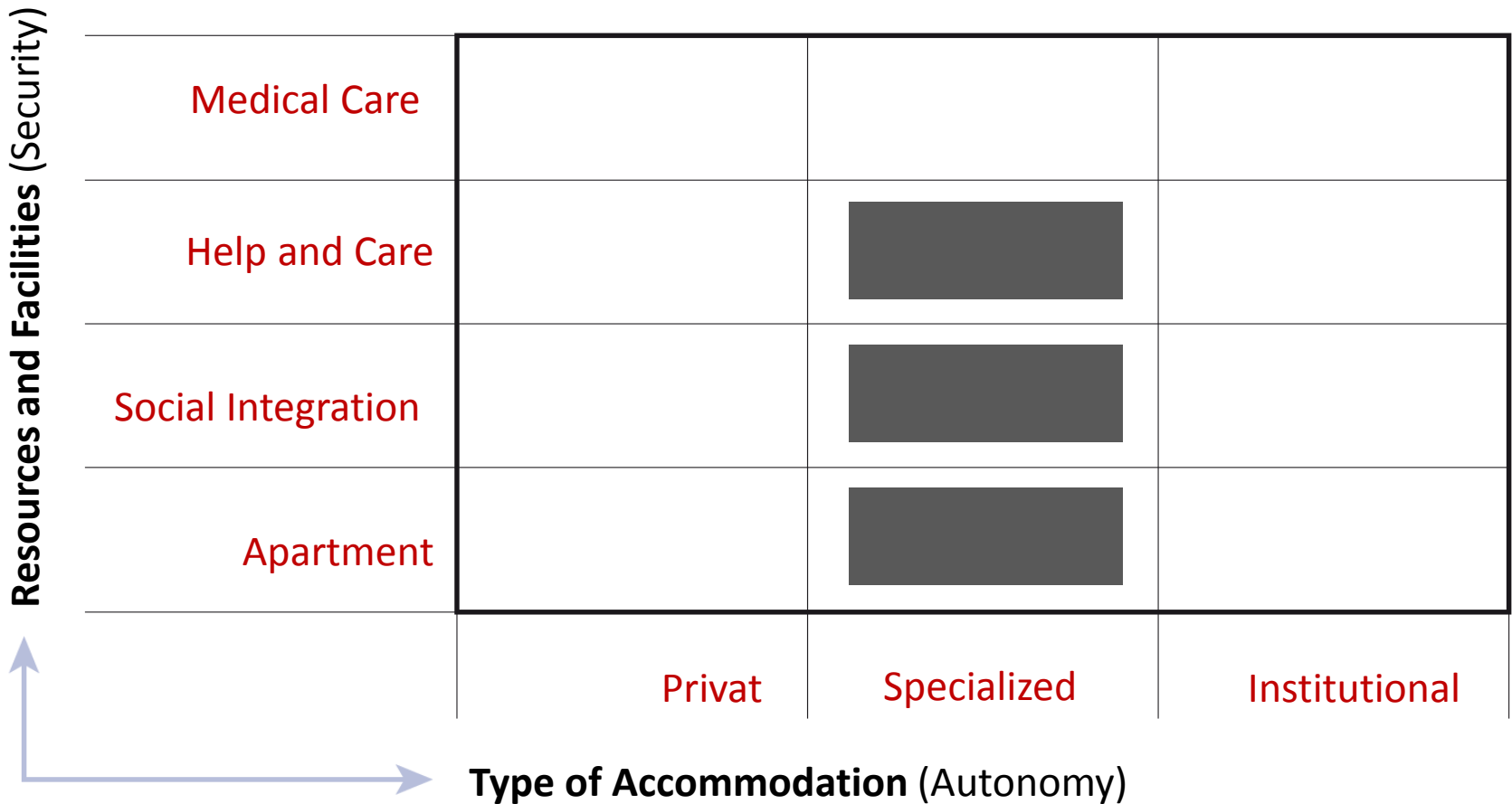
# Apartments for the elderly Nesslau (SG)



27. May 2014

Antonia Jann

# Apartments for the elderly, Nessler (SG)

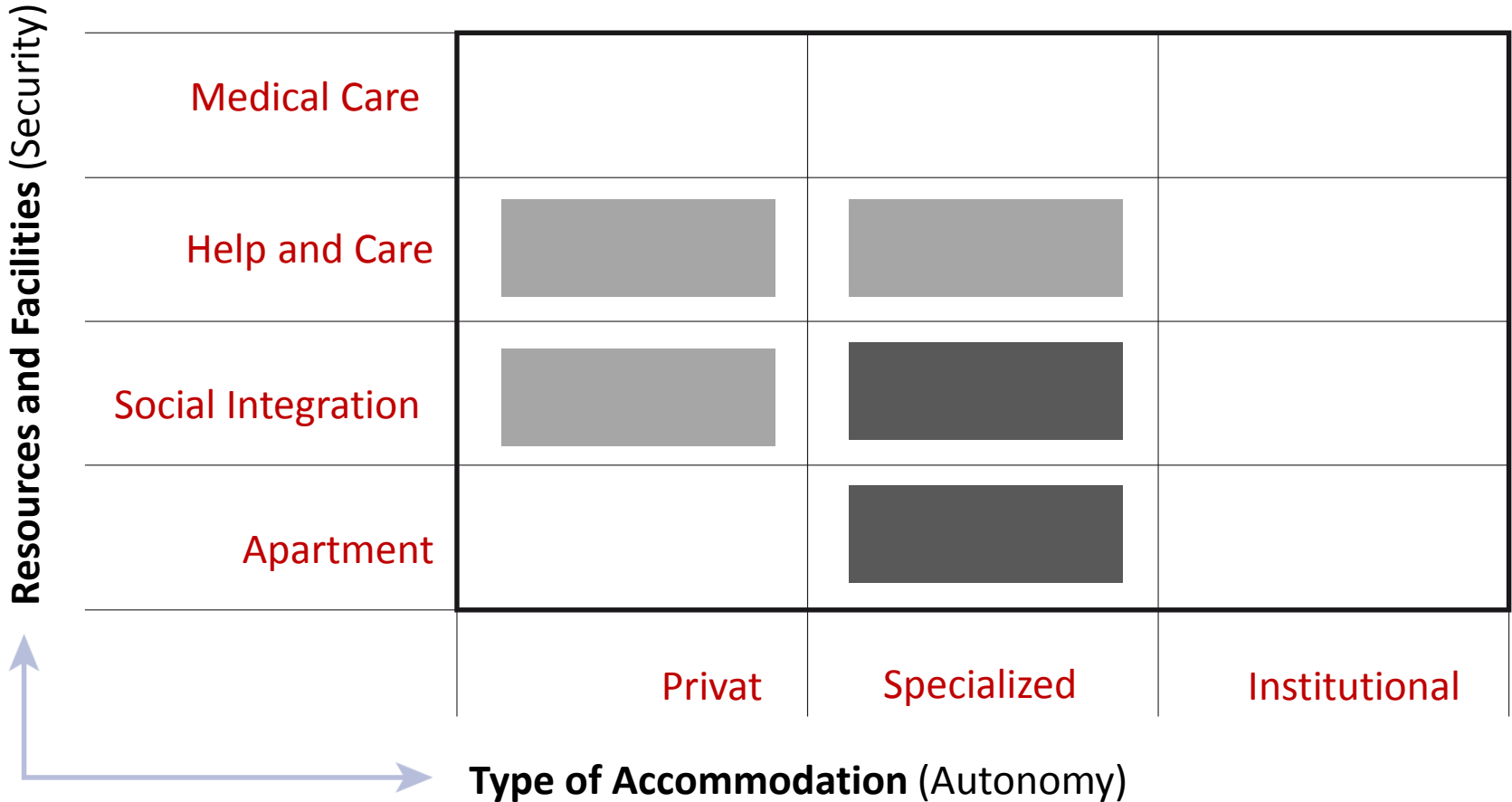


**Main aspect**



**Additional aspect**

# Apartments for the elderly, Twann (BE)



**Main aspect**



**Additional aspect**

# Apartments for the elderly Twann (BE)



27. May 2014



Antonia Jann

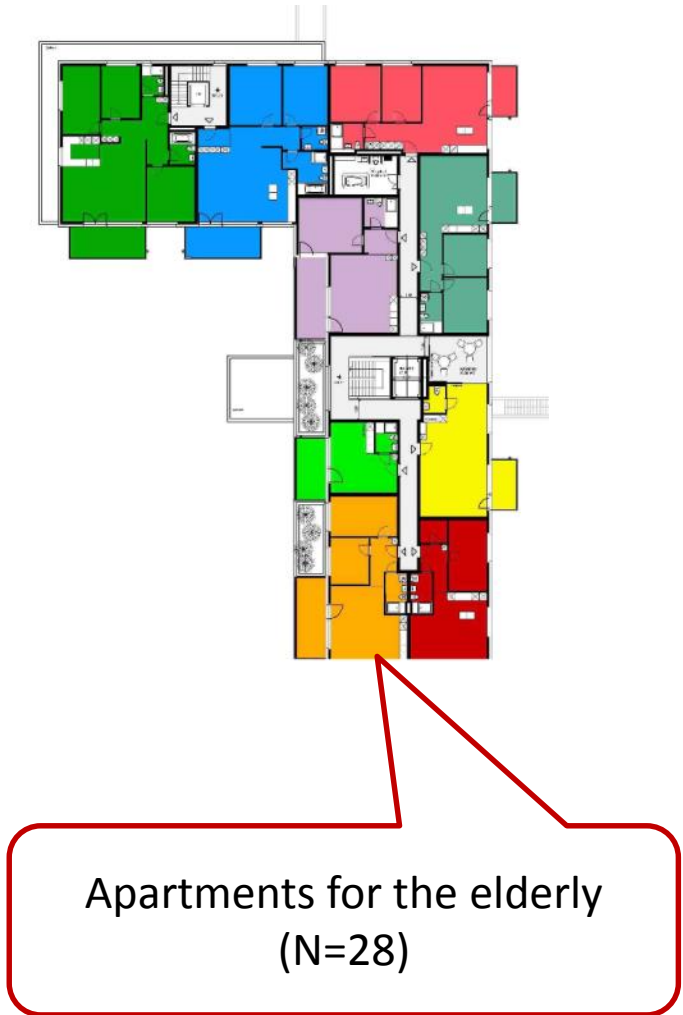
## Apartments for the elderly, Bülach (ZH)

Resources and Facilities (Security)	Medical Care			■
	Help and Care		■	■
	Social Integration	■	■	■
	Apartment		■	■
		Privat	Specialized	Institutional
		Type of Accommodation (Autonomy)		

# Apartments for the elderly Bülach (ZH)







...www.age-stiftung.ch