

EBSCO

EBSCOが提供する
ヘルスサイエンス系オンラインサービス

DynaMed[®]



2019年8月
第36回医学情報サービス研究大会



エビデンス情報レファレンスツール

DynaMed[®]

— 最新の客観的な情報を素早く確認 —

- ✓ 500誌以上の学術誌、160以上のガイドラインをモニター
- ✓ 専任の編集チームが批判的吟味を加え、エビデンスを集約しリスト化
- ✓ 収録データは毎日更新。全診療科のトピック（記事）を収録
- ✓ 画像データ、根拠に基づいたRecommendationsを収録

製品リニューアルについて

2019年夏、DynaMed Plusから
「**DynaMed**」としてリニューアル

Specialties ▾

領域ごとにトピックを見る場合

CONFIDENCE IN PRACTICE

 Search DynaMed

キーワードを入力

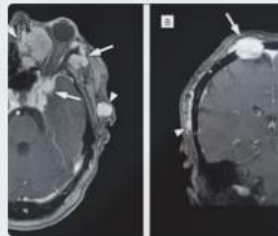
Browse Specialties



Cardiology

Cerebrovascular Disease, Cervical Artery ...

[View all](#)



Oncology

Breast Cancers, Lung Cancers, Urologic ...

[View all](#)



Dermatology

Infestations, Bites and Stings, Inherited ...

[View all](#)

CONFIDENCE IN PRACTICE

Browse Specialties



Cardiology

Cerebrovascular
Disease, Cervical
Artery Dissection
[View all](#)

 upper 

GO TO

- Upper** extremity amputation
- Upper** extremity deep vein thrombosis
- Upper** respiratory infection (URI) in children
- Cystitis and **upper** urinary tract infections (UTI) in men
- Acute nonvariceal **upper** gastrointestinal bleeding

SEARCH FOR

- upper** airway cough syndrome
- upper** extremity deep vein thrombosis
- upper** gastrointestinal bleeding

Dermatology

Infestations, Bites and
Stings, Inherited
Disorders, Burns ...
[View all](#)

 Feedback

オートコンプリートの表示方法は、
現行のDynaMed Plusとほぼ同じ形式
になります。

Measles

TOPIC IMAGES (5) UPDATES

Overview and Recommendations

Background

Evaluation

Management

Prevention

Related Summaries

> General Information

> Epidemiology

> Etiology and Pathogenesis

> History and Physical

> Diagnosis

> Management

> Complications and Prognosis

> Prevention and Screening

> Guidelines and Resources

Overview and Recommendations

Background

- Measles is a highly contagious, vaccine-preventable viral illness causing fever and rash.
- Measles is endemic throughout the world, particularly in Europe, Africa, and most of Asia, although largely eradicated from the Americas.
- Sporadic epidemics in the United States occur, typically due to importation from endemic countries and subsequent spread among unvaccinated persons.
- Spread occurs from person to person mainly via large respiratory droplets, with virus able to survive for up to 2 hours on surfaces or in air spaces.
- The incubation period is about 10-12 days to onset of fever and 14 days to onset of rash.
- The infectious period lasts from about 4 days before to about 4 days after onset of the rash.

Evaluation

- Ask patients about a prodrome of fever, cough, coryza, and conjunctivitis lasting about 2-4 days.
 - Fever may be high (103-104°F)
 - Koplik spots, small bluish-white spots on the buccal mucosa, appear about 1-2 days before the prodrome and are pathognomonic for measles.

TOPIC EDITOR

Anne Neilan MD, MPH

RECOMMENDATIONS EDITOR

Amir Qaseem MD, PhD, MHA, FACP

DEPUTY EDITOR

Vito Iacoviello MD, FIDSA

Produced in collaboration with American College of Physicians



Images in topic (5)

View all



トピック内のエビデンスの記載形式は、
現行のDynaMed Plusとほぼ同じに。

*2019.08時点

Measles

TOPIC **IMAGES (5)** UPDATES



Koplik Spots



Measles rash



Measles



- 個人アカウント機能の強化について -

機関契約のDynaMedにログイン後、
登録した個人アカウントにサインイン



SIGN IN

[Learn more about CME](#)

[Specialties](#) | [Drug Interactions](#) | [Calculators](#) | [About DynaMed](#) | [Why DynaMed](#) | [Editorial](#)

CONFIDENCE IN PRACTICE



Search DynaMed

Updates

FOLLOWED ALL

13 Jun 2019

1,022 cases of measles reported in 28 states in the United States between January 1 and June 6, 2019 (CDC Measles Cases and Outbreaks 2019 June 10)

View in [Measles](#)

11 Jun 2019

addition of case-manager-led multicomponent intervention to usual care may not reduce

個人アカウントにサインインすることで、
閲覧履歴やフォローするトピックなど、
ユーザーの好みに紐づいた情報を確認
できるようになります。

COPD (Eur Respir J 2018 Jan 11)

View in [COPD](#)

11 Jun 2019

motivational interviewing-based health coaching may not improve COPD-related quality of life or dyspnea in adults with moderate-to-severe COPD with limited resources (Ann Am Thorac Soc 2018)

Recently Viewed

[Abdominal aortic aneurysm \(AAA\)](#)

[Decision rules for computed tomography in children with head injury](#)

[Measles](#)

[Acute rhinosinusitis in adults](#)

[Gastrointestinal angiodysplasia](#)

[COPD](#)

[Cough - approach to the patient](#)

[Chronic asthma in children](#)

[Fever of unknown origin \(FUO\) in children - approach to the patient](#)

[Peanut allergy](#)

Followed

+ COPD

+ Abdominal aortic aneurysm (AAA)

+ Peanut allergy

+ Measles

無料トライアルについて(～9月末日)

**MEDLINE Complete
CINAHL Complete**

**2019年9月末までアクセス可能な
トライアルアカウントをご用意しました。**

詳細は、弊社配布資料をご覧ください。

お問い合わせ、個別トライアルのご用命は下記まで

EBSCO Information Services Japan株式会社

@ jp-medical@ebSCO.com

☎ 03-5342-0701