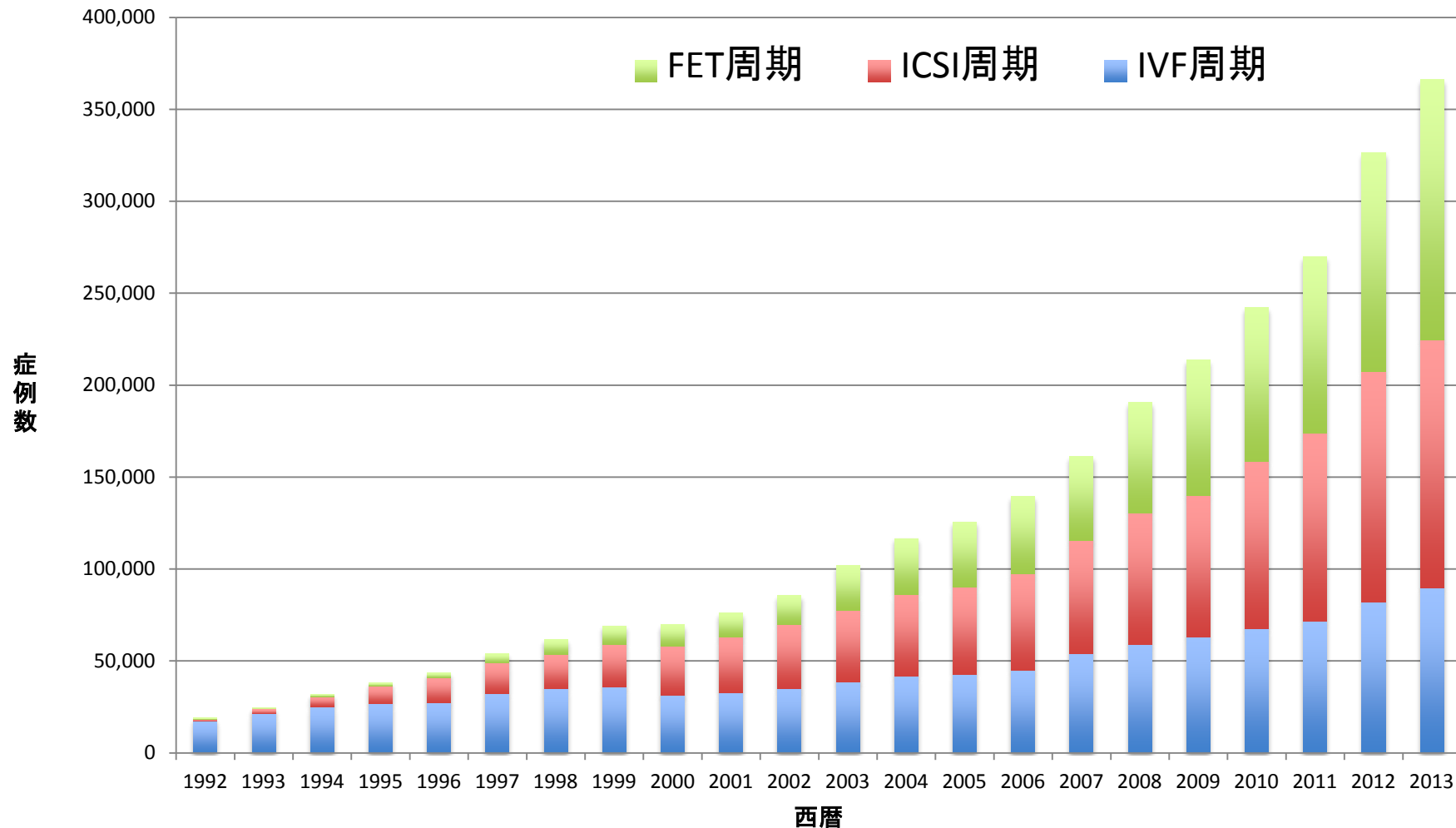
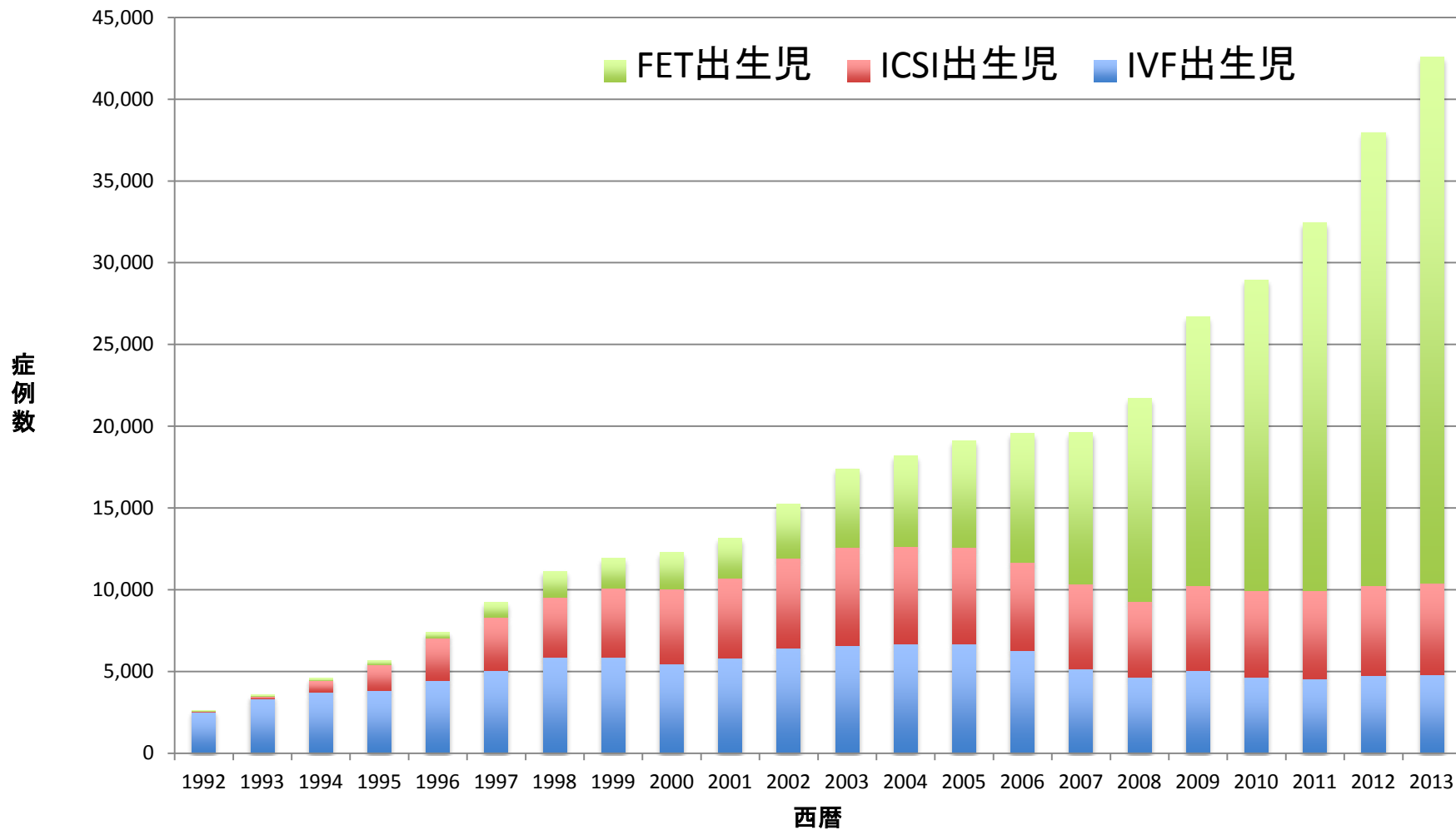


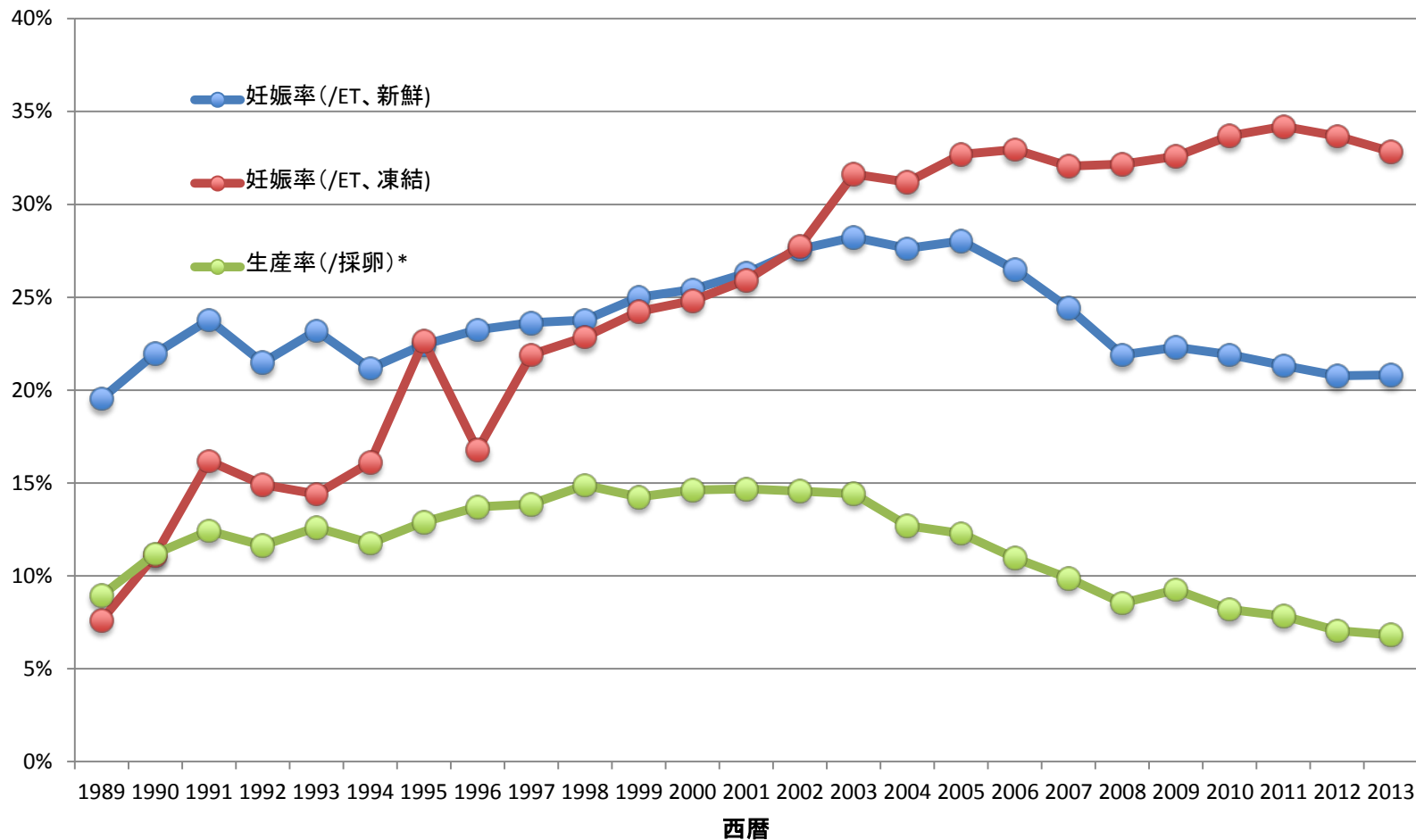
年別 治療周期数



年別 出生児数



年別 妊娠率・生産率

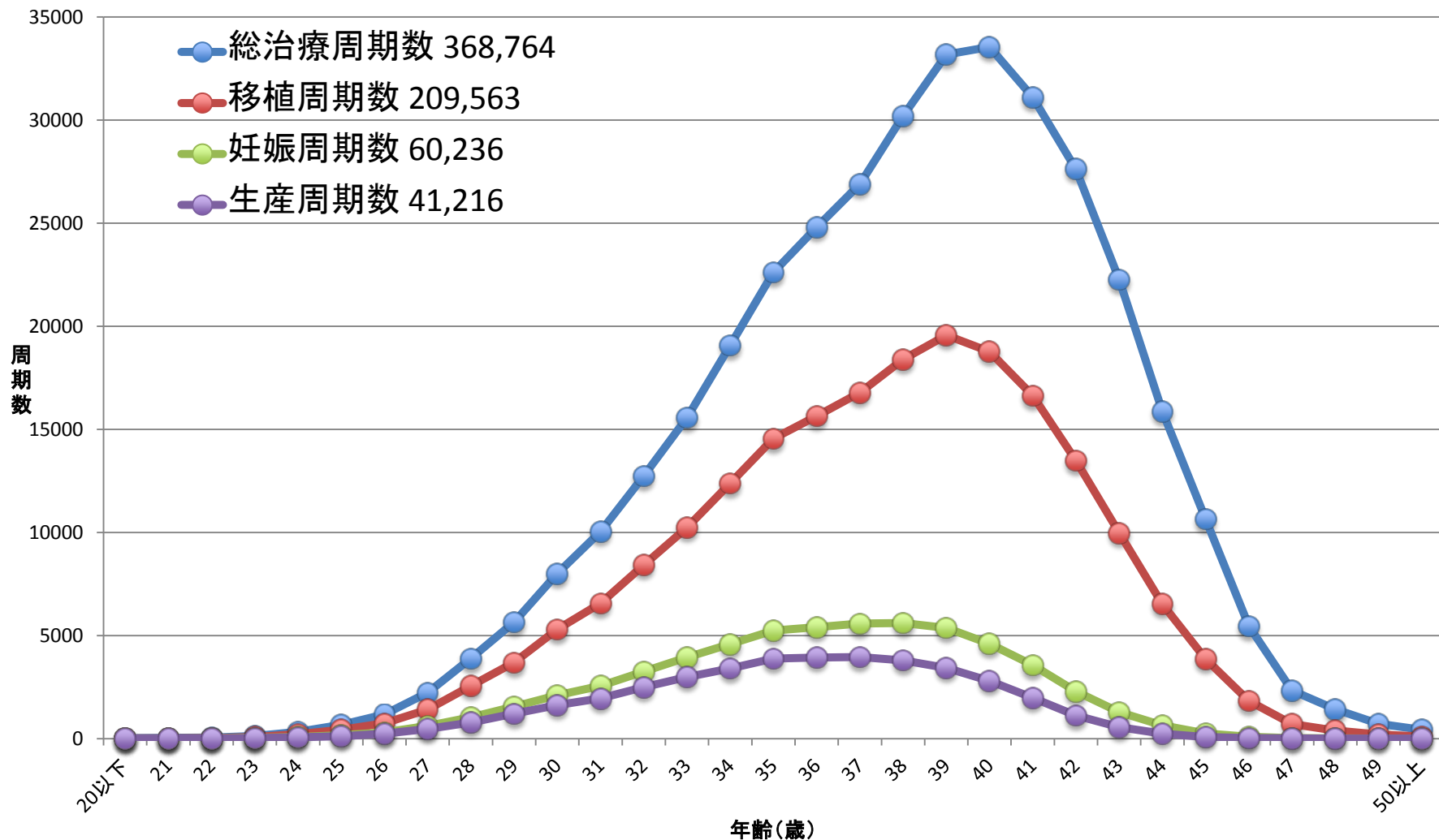


* 2007年以降は全胚凍結周期を除いて表示

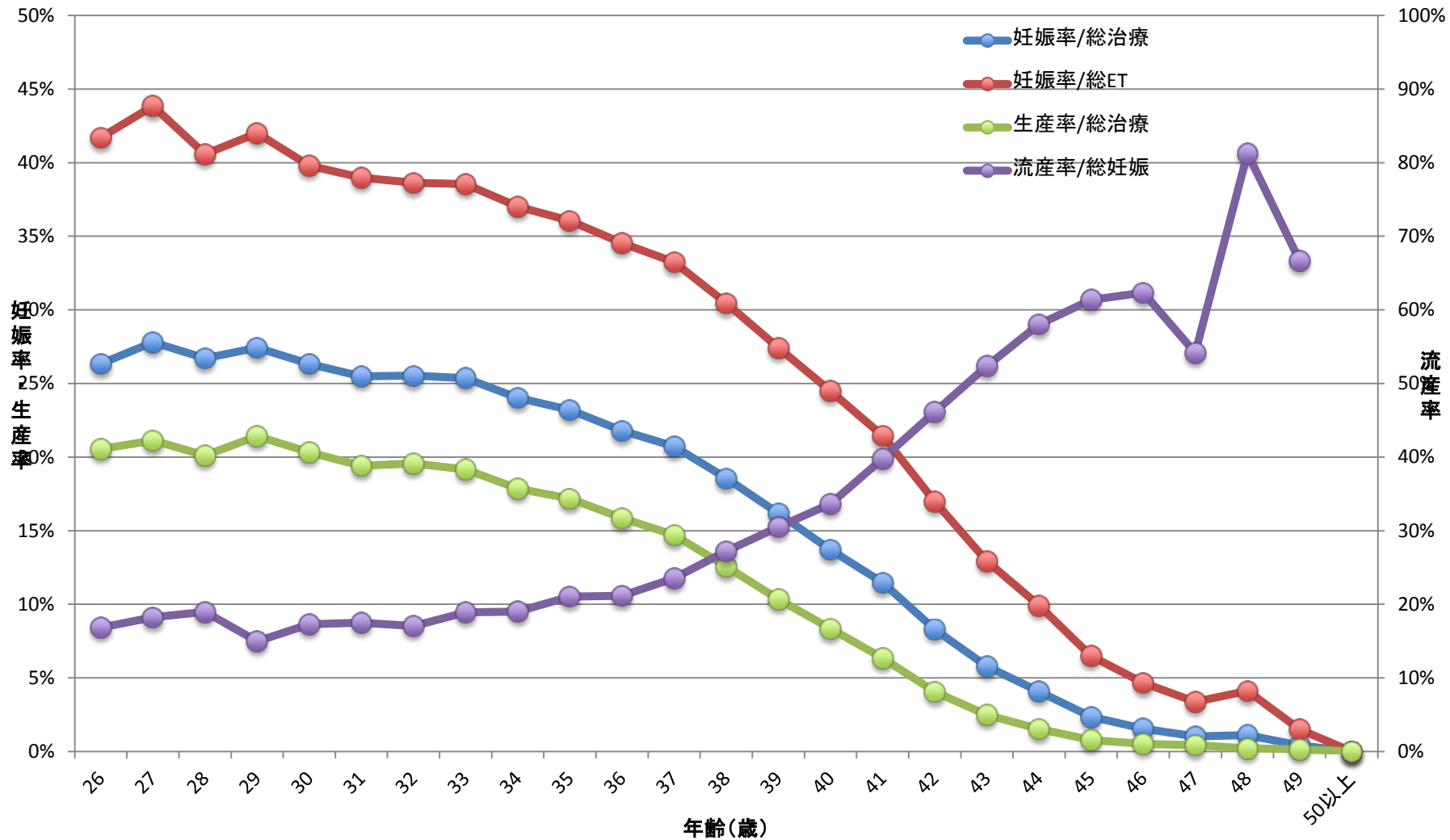
2013

西暦	IVF(GIFT,その他を含む)					ICSI(SPLITを含む)				凍結融解胚(卵)			
	治療周期数	採卵周期数	全凍結周期	妊娠周期数	出生児数	治療周期数	採卵周期数	全凍結周期	妊娠周期数	出生児数	治療周期数	妊娠周期数	出生児数
1985	1,195	1,195		64	27								
1986	752	752		56	16								
1987	1,503	1,503		135	54								
1988	1,702	1,702		257	114								
1989	4,218	3,890		580	446					184	7	3	
1990	7,405	6,892		1,178	1,031					160	17	17	
1991	11,177	10,581		2,015	1,661					369	57	39	
1992	17,404	16,381		2,702	2,525	963	936		42	35	553	79	66
1993	21,287	20,345		3,730	3,334	2,608	2,447		176	149	681	86	71
1994	25,157	24,033		4,069	3,734	5,510	5,339		759	698	1,303	179	144
1995	26,648	24,694		4,246	3,810	9,820	9,054		1,732	1,579	1,682	323	298
1996	27,338	26,385		4,818	4,436	13,438	13,044		2,799	2,588	2,900	449	386
1997	32,247	30,733		5,730	5,060	16,573	16,376		3,495	3,249	5,208	1,086	902
1998	34,929	33,670		6,255	5,851	18,657	18,266		3,952	3,701	8,132	1,748	1,567
1999	36,085	34,290		6,812	5,870	22,984	22,350		4,702	4,247	9,950	2,198	1,812
2000	31,334	29,907		6,328	5,447	26,712	25,794		5,240	4,582	11,653	2,660	2,245
2001	32,676	31,051		6,749	5,829	30,369	29,309		5,924	4,862	13,034	3,080	2,467
2002	34,953	33,849		7,767	6,443	34,824	33,823		6,775	5,486	15,887	4,094	3,299
2003	38,575	36,480		8,336	6,608	38,871	36,663		7,506	5,994	24,459	6,205	4,798
2004	41,619	39,656		8,542	6,709	44,698	43,628		7,768	5,921	30,287	7,606	5,538
2005	42,822	40,471		8,893	6,706	47,579	45,388		8,019	5,864	35,069	9,396	6,542
2006	44,778	42,248		8,509	6,256	52,539	49,854		7,904	5,401	42,171	11,798	7,930
2007	53,873	52,165	7,626	7,416	5,144	61,813	60,294	11,541	7,784	5,194	45,478	13,965	9,257
2008	59,148	57,217	10,139	6,897	4,664	71,350	69,864	15,390	7,017	4,615	60,115	18,597	12,425
2009	63,083	60,754	11,800	6,891	5,046	76,790	75,340	19,046	7,330	5,180	73,927	23,216	16,454
2010	67,714	64,966	13,843	6,556	4,657	90,677	88,822	24,379	7,699	5,277	83,770	27,382	19,011
2011	71,422	68,651	16,202	6,341	4,546	102,473	100,518	30,773	7,601	5,415	95,764	31,721	22,465
2012	82,108	79,434	20,627	6,703	4,740	125,229	122,962	41,943	7,947	5,498	119,089	39,106	27,715
2013	89,950	87,104	25,085	6,817	4,776	134,871	134,871	49,316	8,027	5,630	141,335	45,392	32,148

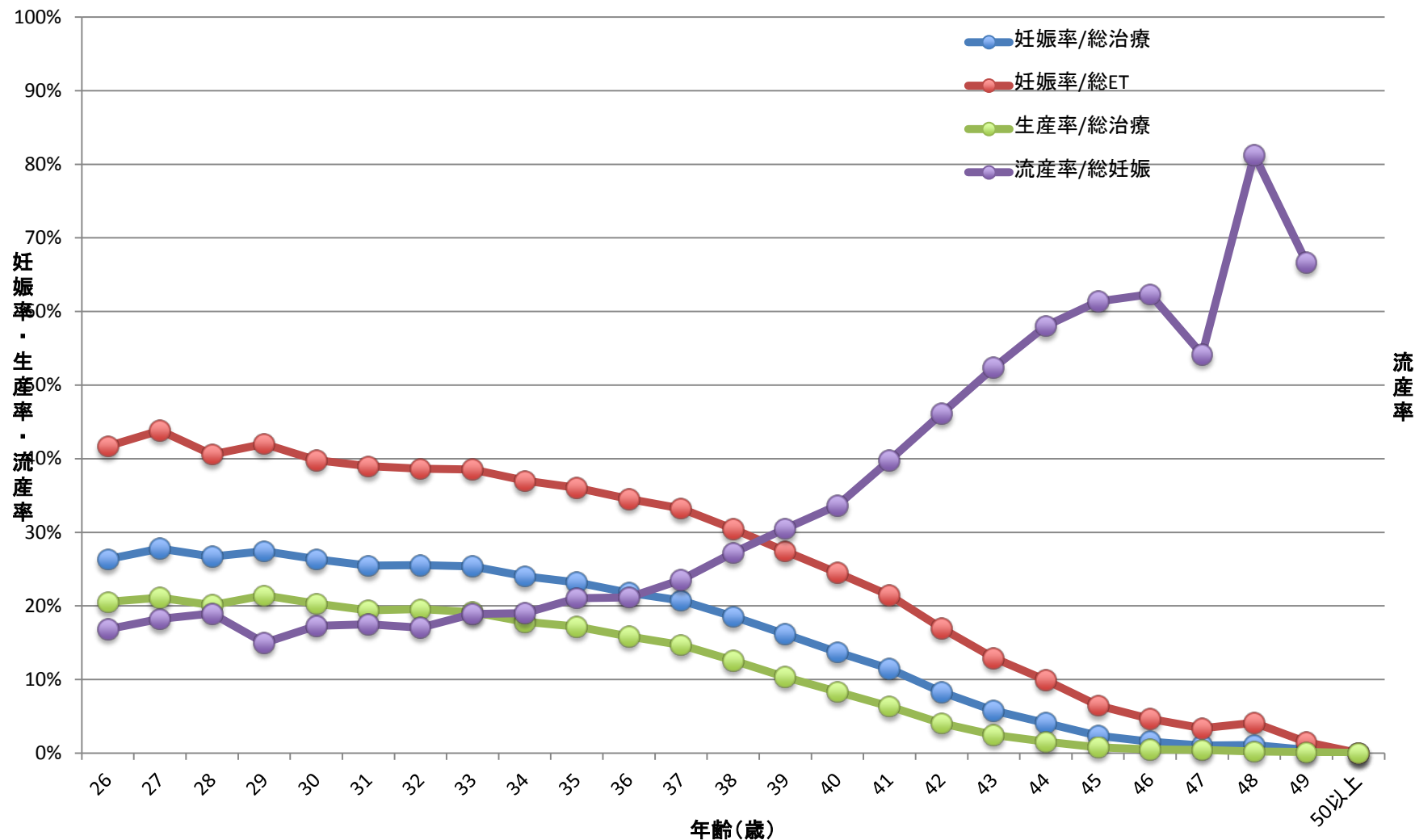
ART治療周期数 2013



ART妊娠率・生産率・流産率 2013



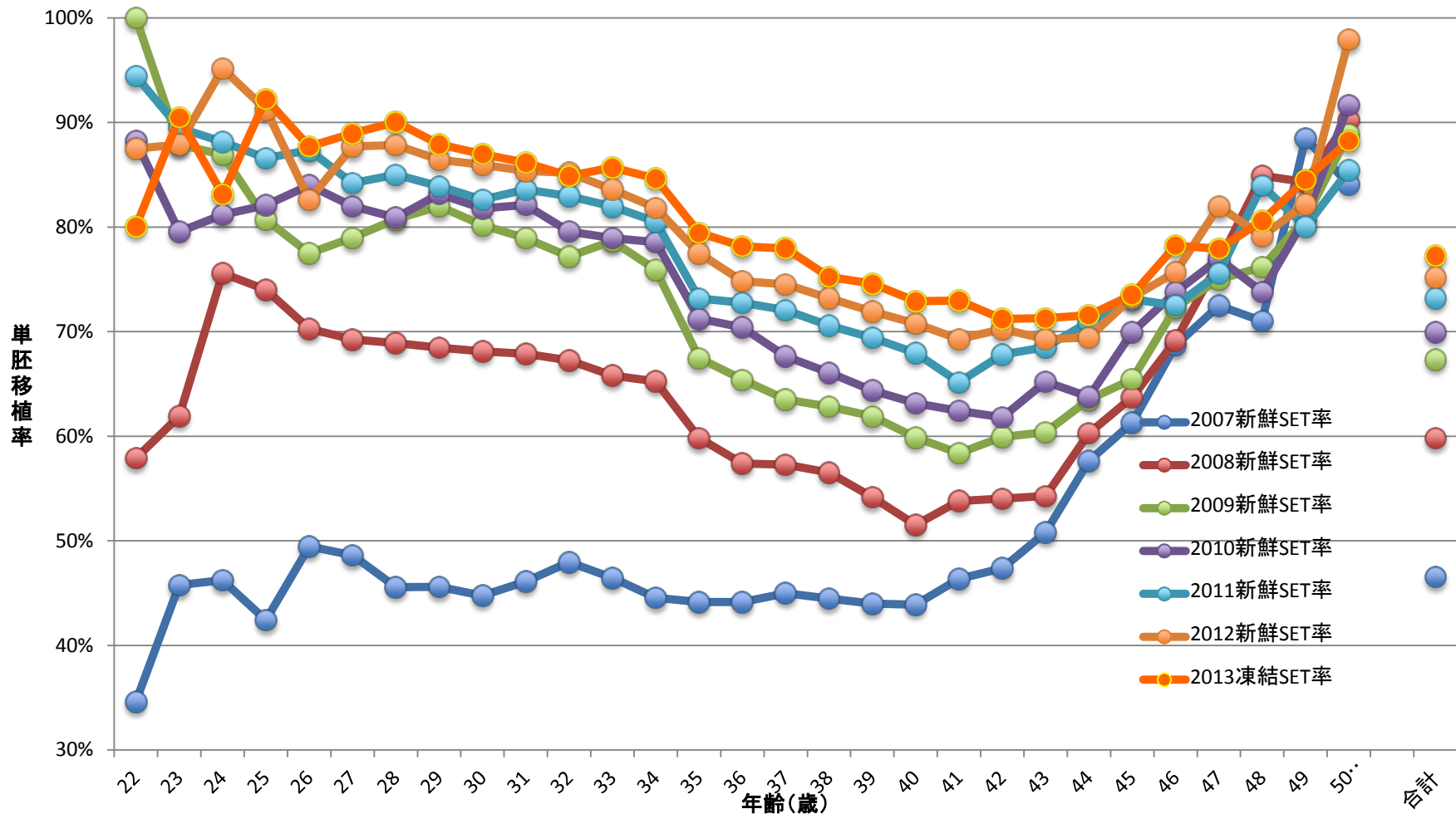
ART妊娠率・生産率・流産率 2013



2013年全て

年齢別	総治療周期数	移植周期数	妊娠周期数	生産周期数	流産数	妊娠率/総治療	妊娠率/総ET	生産率/総治療	流産率/総妊娠
20以下	23	11	4	3	1	17.4%	36.4%	13.0%	25.0%
21	34	20	5	4	1	14.7%	25.0%	11.8%	20.0%
22	48	29	10	9	1	20.8%	34.5%	18.8%	10.0%
23	129	80	34	26	6	26.4%	42.5%	20.2%	17.6%
24	324	222	77	65	10	23.8%	34.7%	20.1%	13.0%
25	673	429	166	121	36	24.7%	38.7%	18.0%	21.7%
26	1,173	741	309	241	52	26.3%	41.7%	20.5%	16.8%
27	2,230	1,414	620	471	113	27.8%	43.8%	21.1%	18.2%
28	3,890	2,560	1,039	782	197	26.7%	40.6%	20.1%	19.0%
29	5,648	3,688	1,549	1,210	232	27.4%	42.0%	21.4%	15.0%
30	8,009	5,300	2,109	1,628	365	26.3%	39.8%	20.3%	17.3%
31	10,044	6,568	2,560	1,949	448	25.5%	39.0%	19.4%	17.5%
32	12,736	8,414	3,251	2,491	554	25.5%	38.6%	19.6%	17.0%
33	15,570	10,243	3,948	2,984	746	25.4%	38.5%	19.2%	18.9%
34	19,077	12,382	4,583	3,409	872	24.0%	37.0%	17.9%	19.0%
35	22,618	14,552	5,247	3,886	1,104	23.2%	36.1%	17.2%	21.0%
36	24,807	15,645	5,405	3,936	1,144	21.8%	34.5%	15.9%	21.2%
37	26,897	16,776	5,576	3,954	1,312	20.7%	33.2%	14.7%	23.5%
38	30,195	18,400	5,604	3,795	1,526	18.6%	30.5%	12.6%	27.2%
39	33,185	19,571	5,367	3,434	1,637	16.2%	27.4%	10.3%	30.5%
40	33,543	18,777	4,598	2,799	1,548	13.7%	24.5%	8.3%	33.7%
41	31,113	16,646	3,569	1,974	1,420	11.5%	21.4%	6.3%	39.8%
42	27,625	13,488	2,290	1,122	1,056	8.3%	17.0%	4.1%	46.1%
43	22,263	9,973	1,289	553	675	5.8%	12.9%	2.5%	52.4%
44	15,873	6,533	648	245	376	4.1%	9.9%	1.5%	58.0%
45	10,662	3,868	251	83	154	2.4%	6.5%	0.8%	61.4%
46	5,457	1,825	85	28	53	1.6%	4.7%	0.5%	62.4%
47	2,338	711	24	10	13	1.0%	3.4%	0.4%	54.2%
48	1,429	389	16	3	13	1.1%	4.1%	0.2%	81.3%
49	716	200	3	1	2	0.4%	1.5%	0.1%	66.7%
50以上	435	108	0	0	0	0.0%	0.0%	0.0%	
合計	368,764	209,563	60,236	41,216	15,667	16.3%	28.7%	11.2%	26.0%

SET実施率 7年間の比較(新鮮胚移植)



SET実施率 7年間の比較(凍結胚移植)

