

# 症例

年齢：83歳

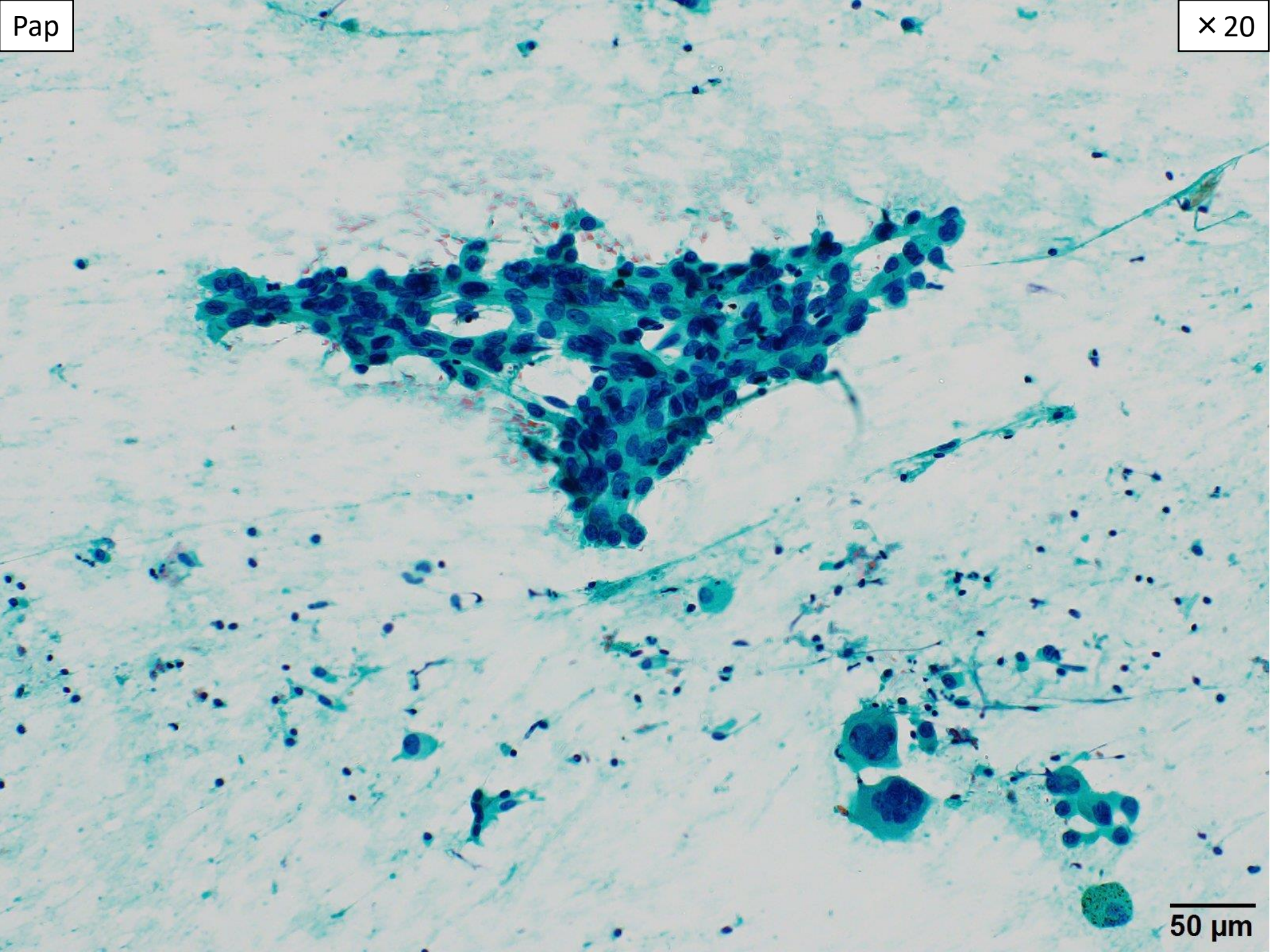
性別：女性

材料：気管支擦過(キュレット)

現病歴：左下葉S6結節に対して気管支鏡検査実施

Pap

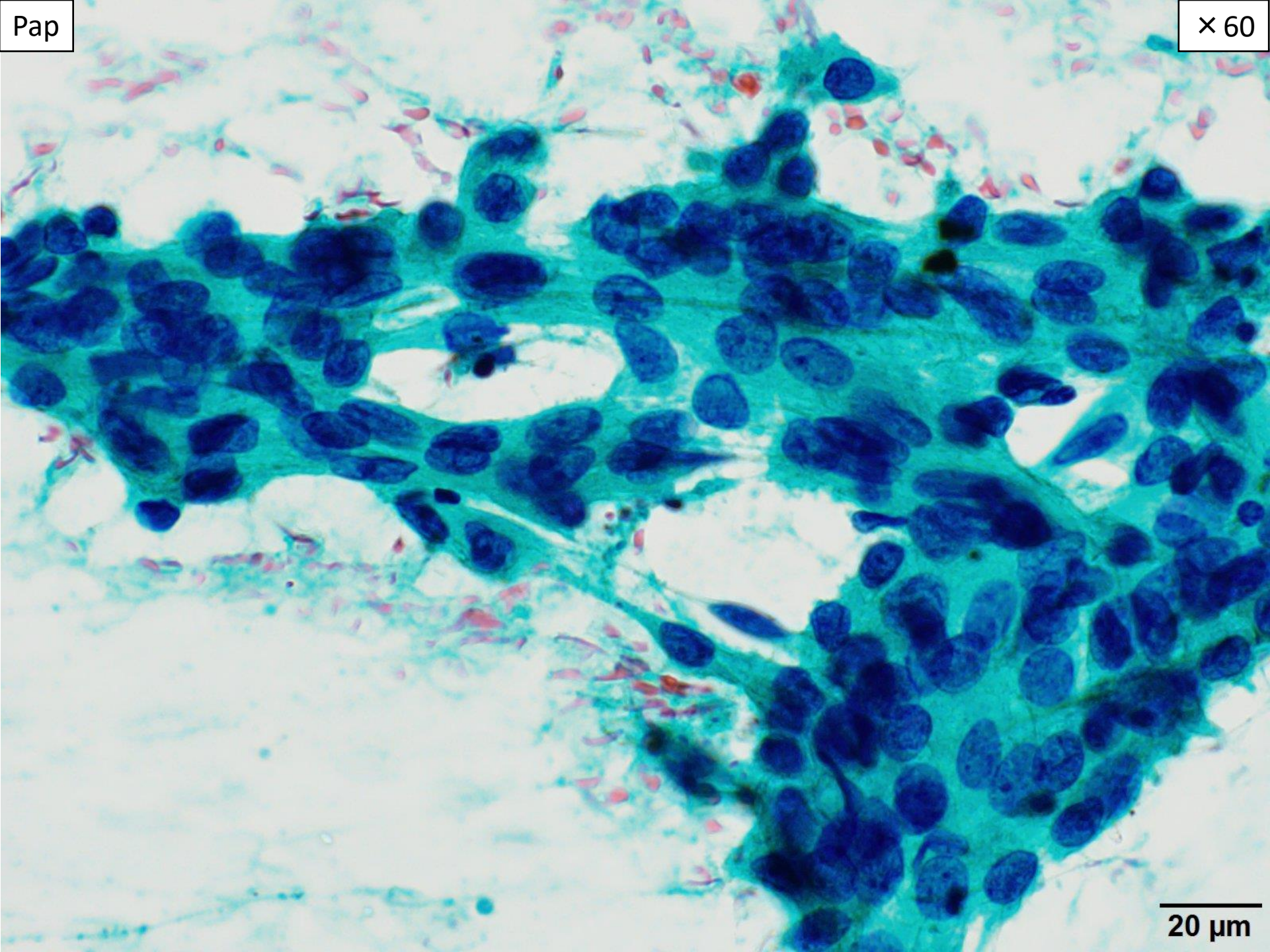
× 20



50 μm

Pap

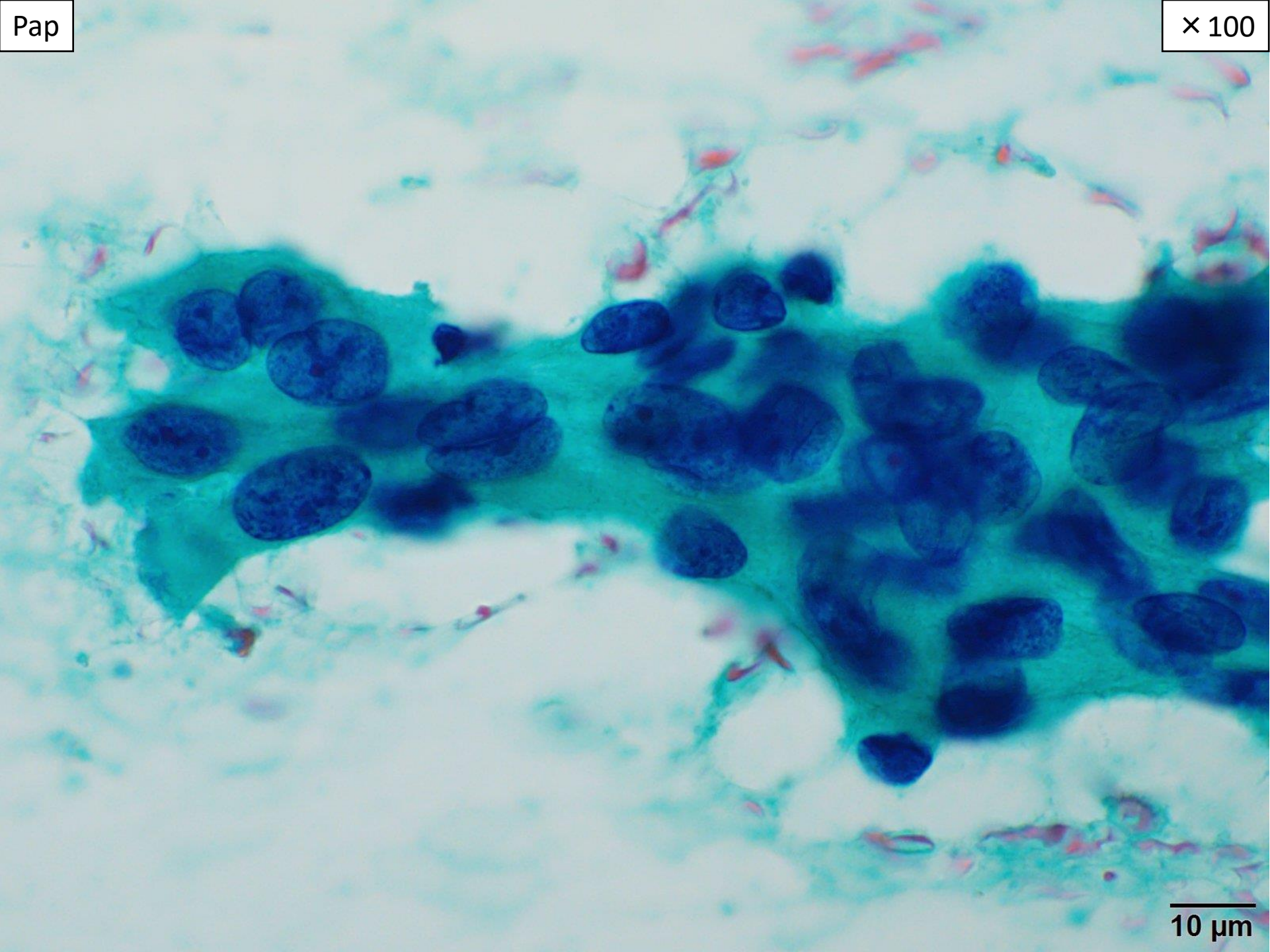
× 60



20 μm

Pap

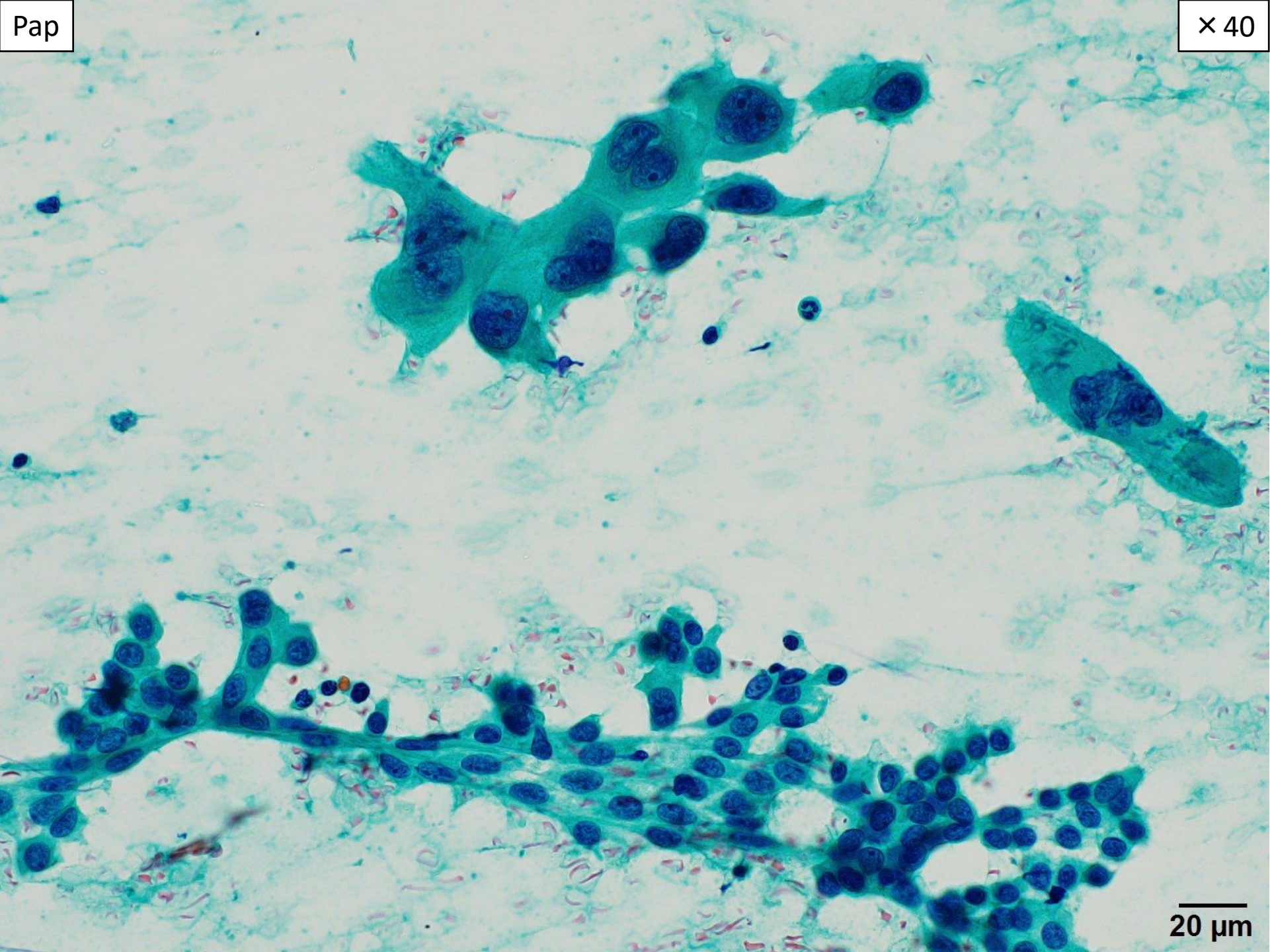
× 100



10 μm

Pap

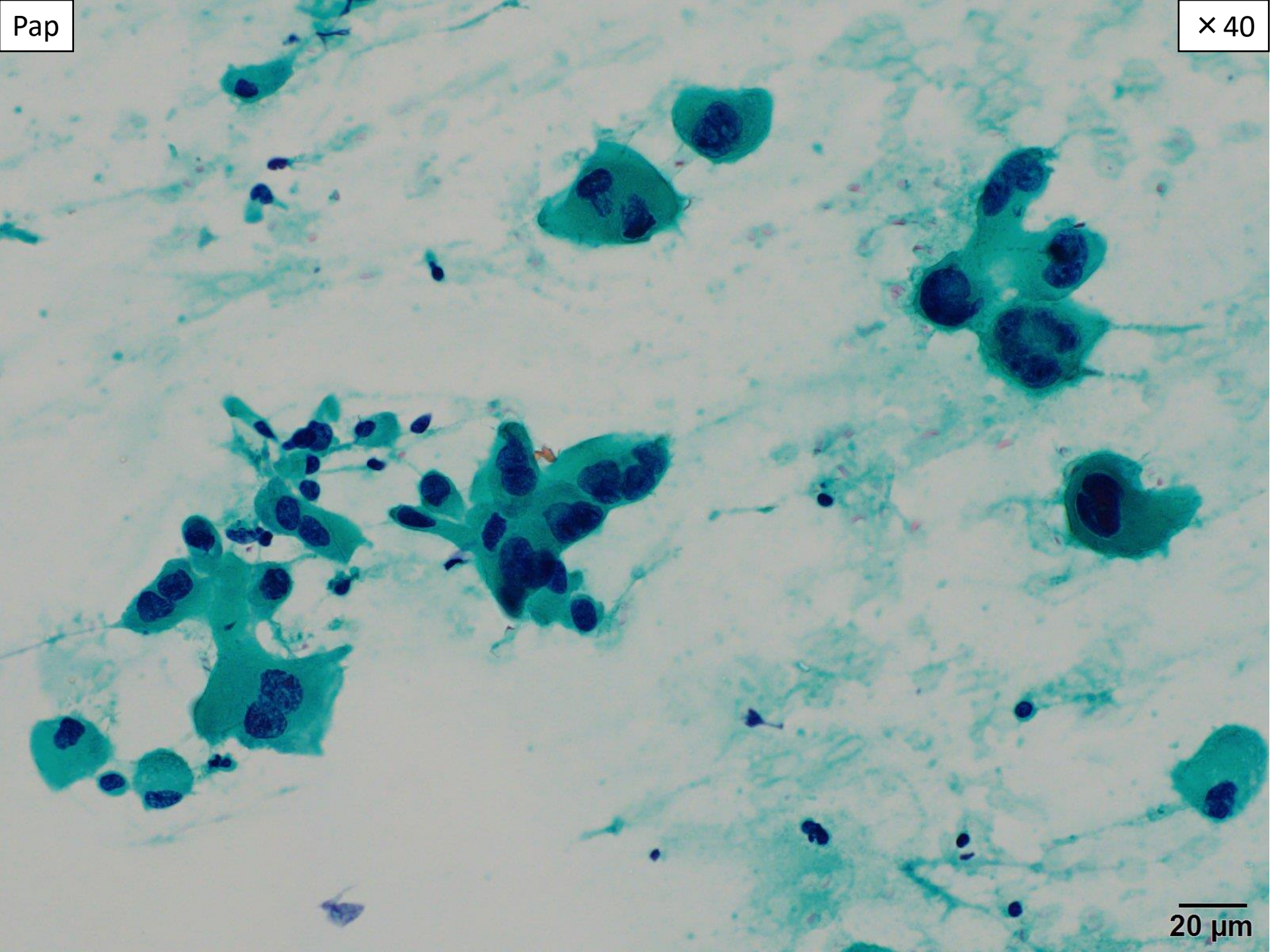
× 40



20 μm

Pap

× 40



20 μm

# 選擇肢

1. 腺癌

2. 扁平上皮癌

3. 非小細胞癌