

第42回埼玉県細胞検査士会学術集会 症例検討会

症例2 ～リンパ節～

症例検討 リンパ節

□症例

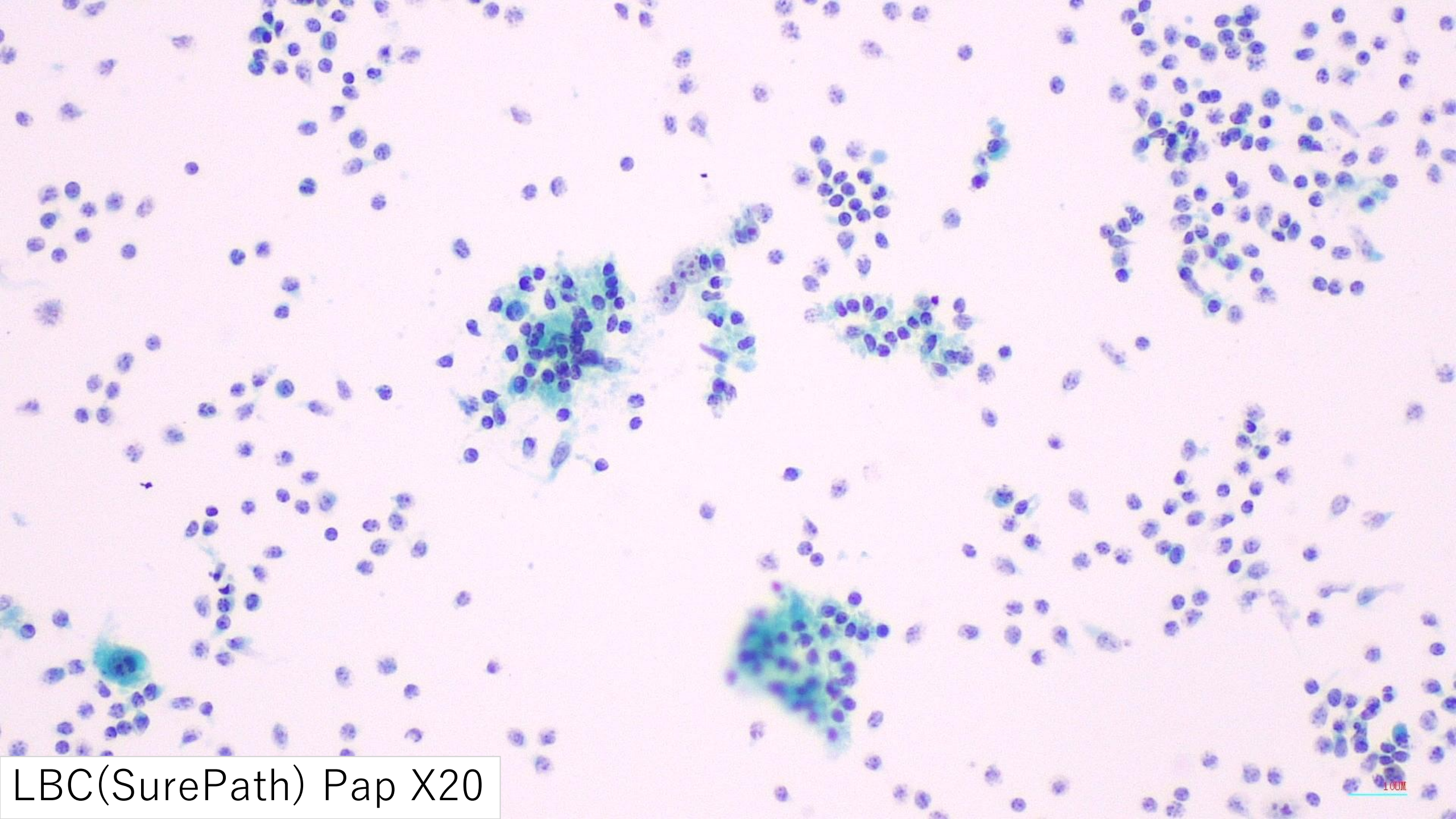
70歳代 女性

□主訴

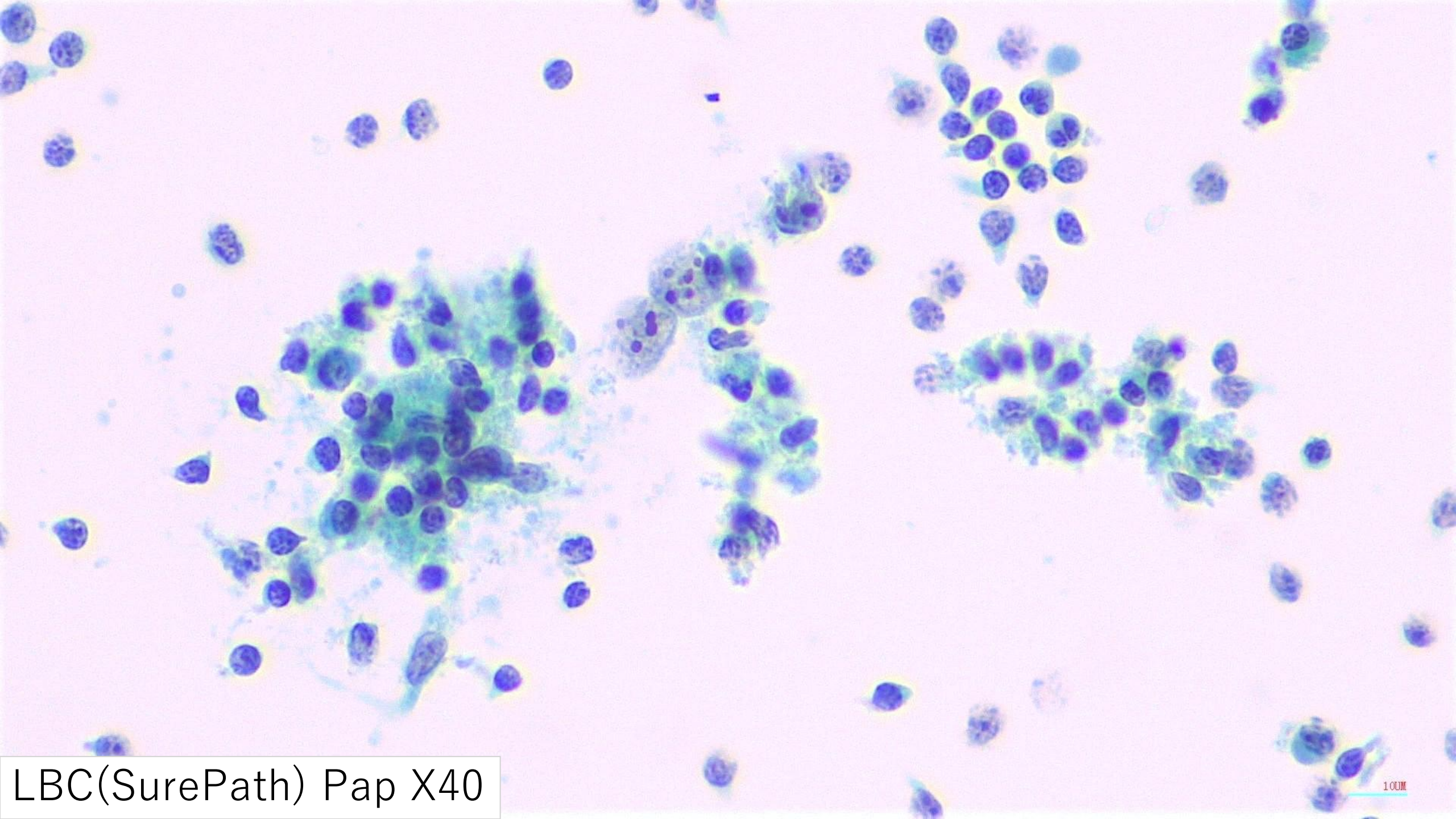
左頸部腫瘍自覚，嚥下時咽頭痛

□既往歴

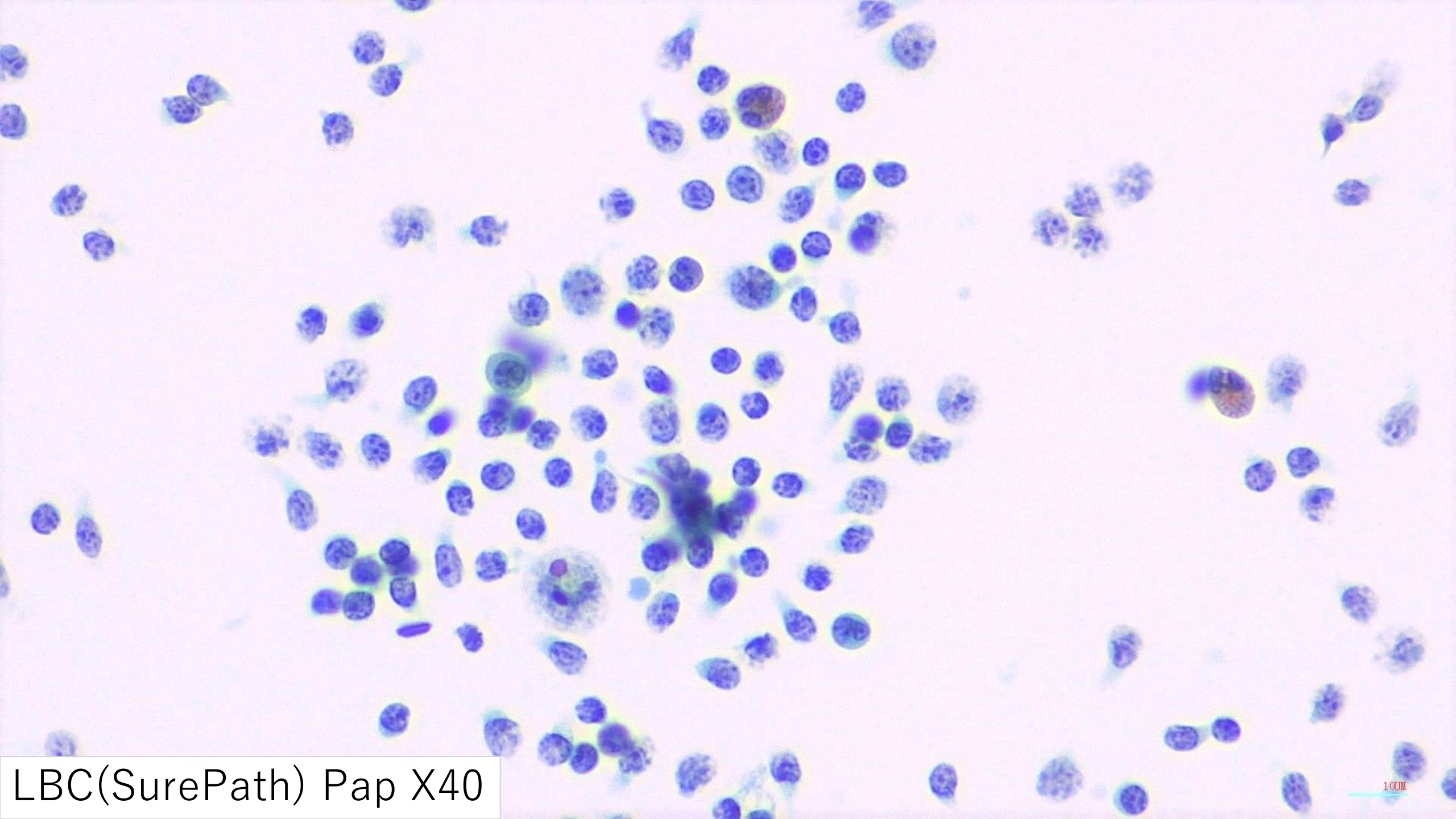
潜在性結核症



LBC(SurePath) Pap X20



LBC(SurePath) Pap X40



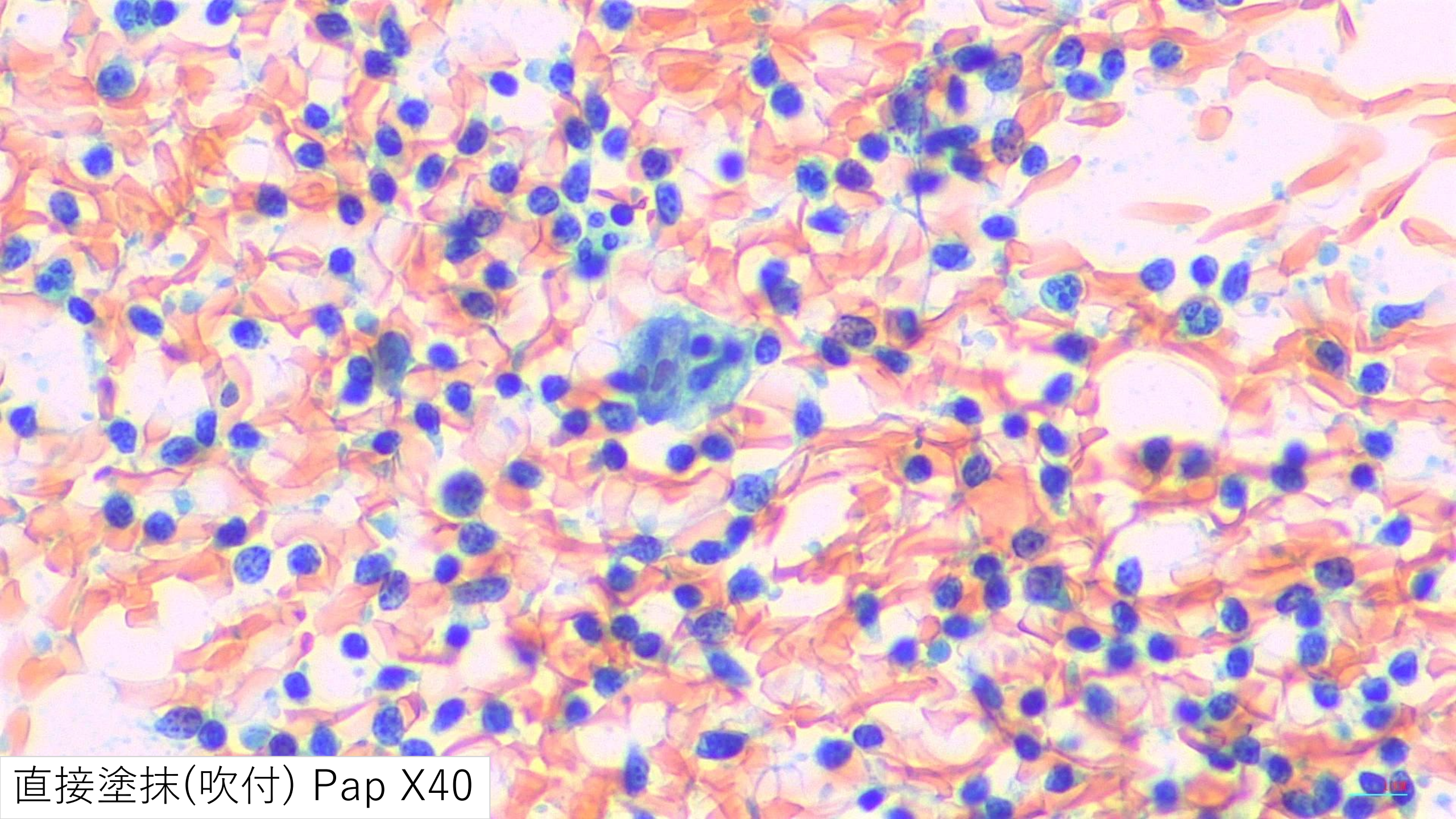
LBC(SurePath) Pap X40

1.00mm

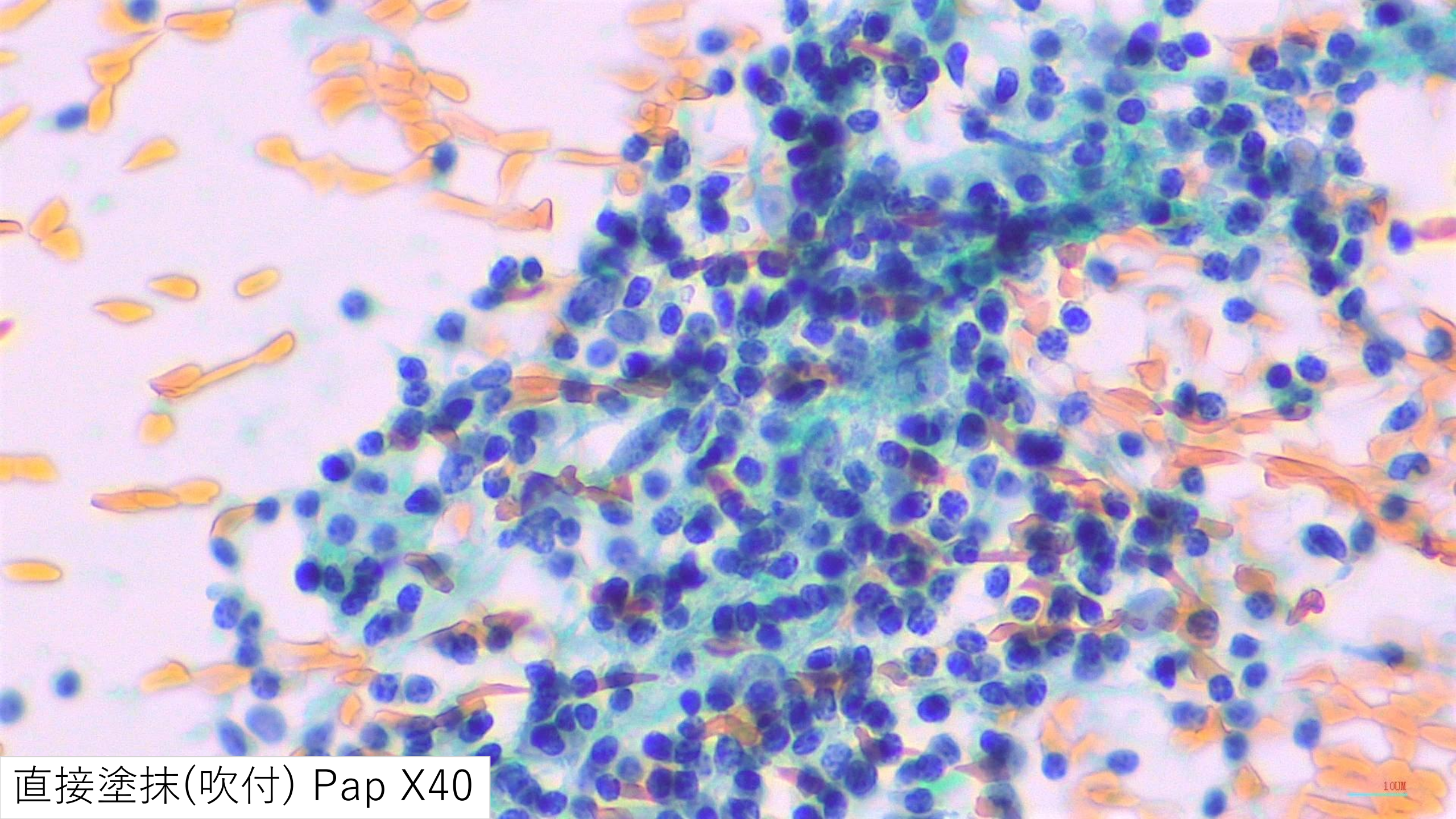
LBC(SurePath) Pap X40

100µm

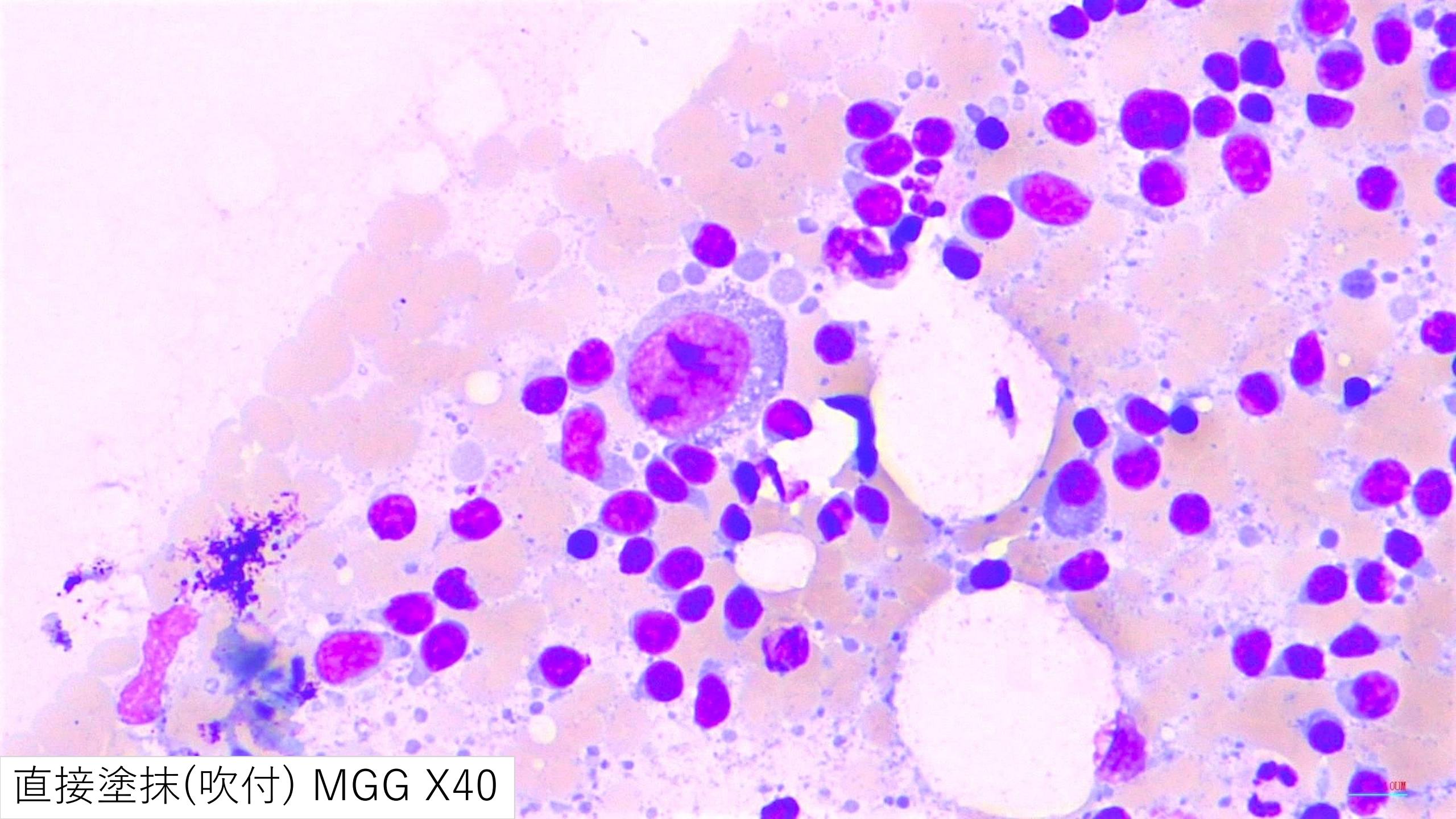




直接塗抹(吹付) Pap X40



直接塗抹(吹付) Pap X40



直接塗抹(吹付) MGG X40

推定病変選択枝

1. Reactive lymphadenitis
2. Tuberculosis
3. Adenocarcinoma
4. Hodgkin Lymphoma
5. Follicular Lymphoma

事前解答

- <https://docs.google.com/forms/d/1aMPuPKf06gddLeOQt4u89doIA02STALJiyXbTGE7bhU/edit>

