

第42回 埼玉県細胞検査士会学術集会

スライドカンファレンス  
症例検討3  
呼吸器

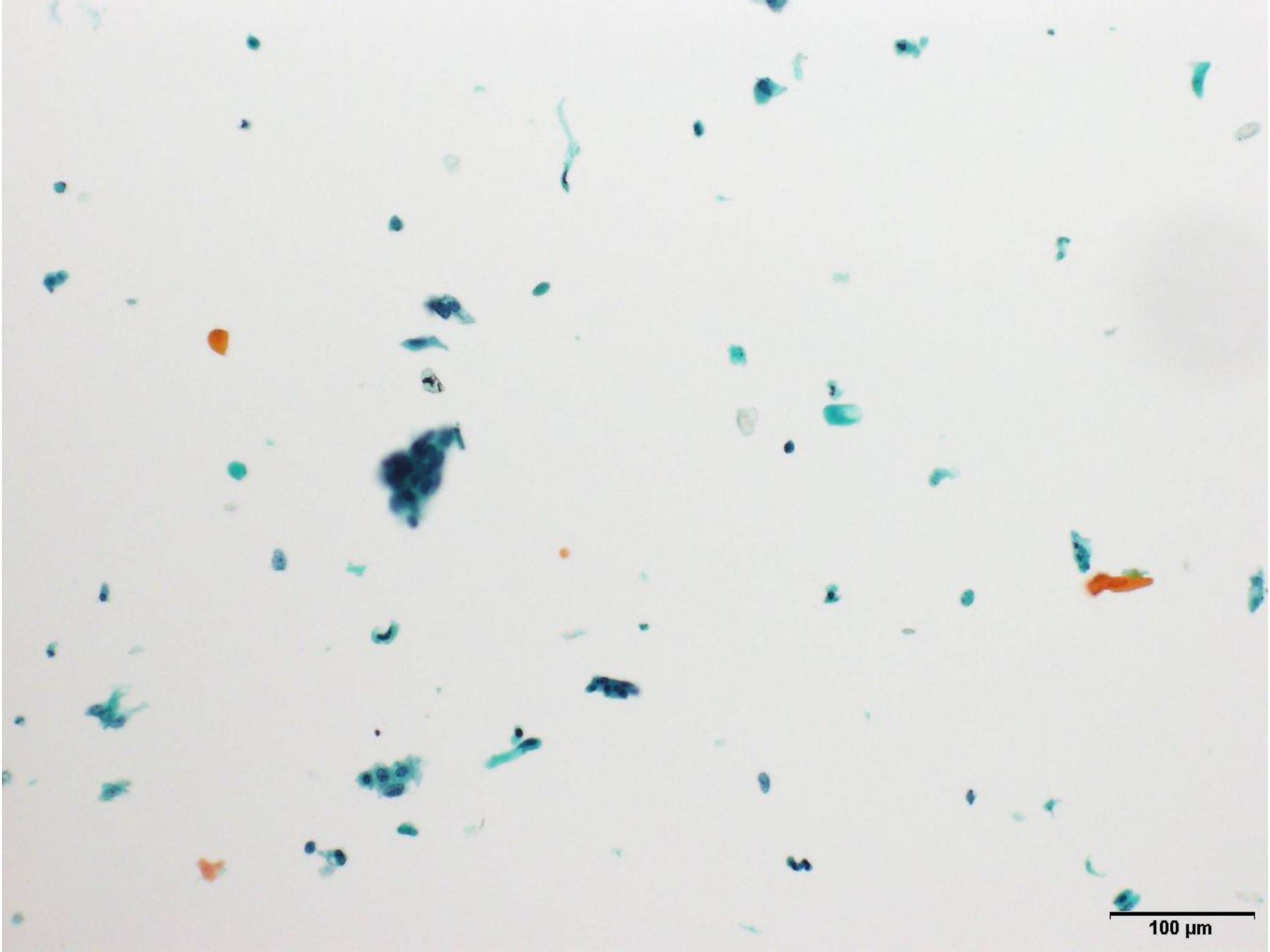
# 症 例

患 者：70代，男性

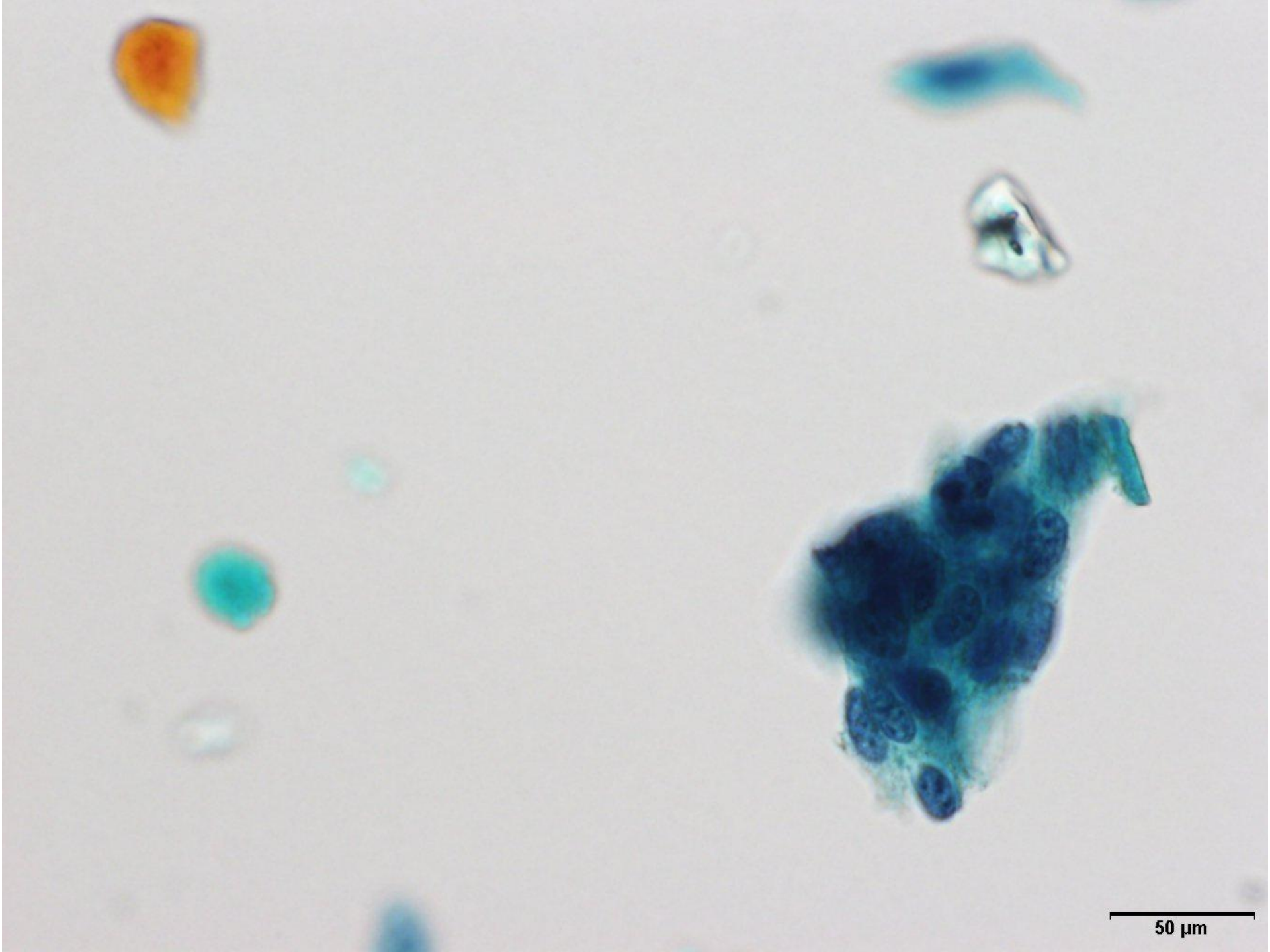
現病歴：右下葉肺癌の疑い

材 料：腫瘍剖面擦過LBC標本（TACAS法）

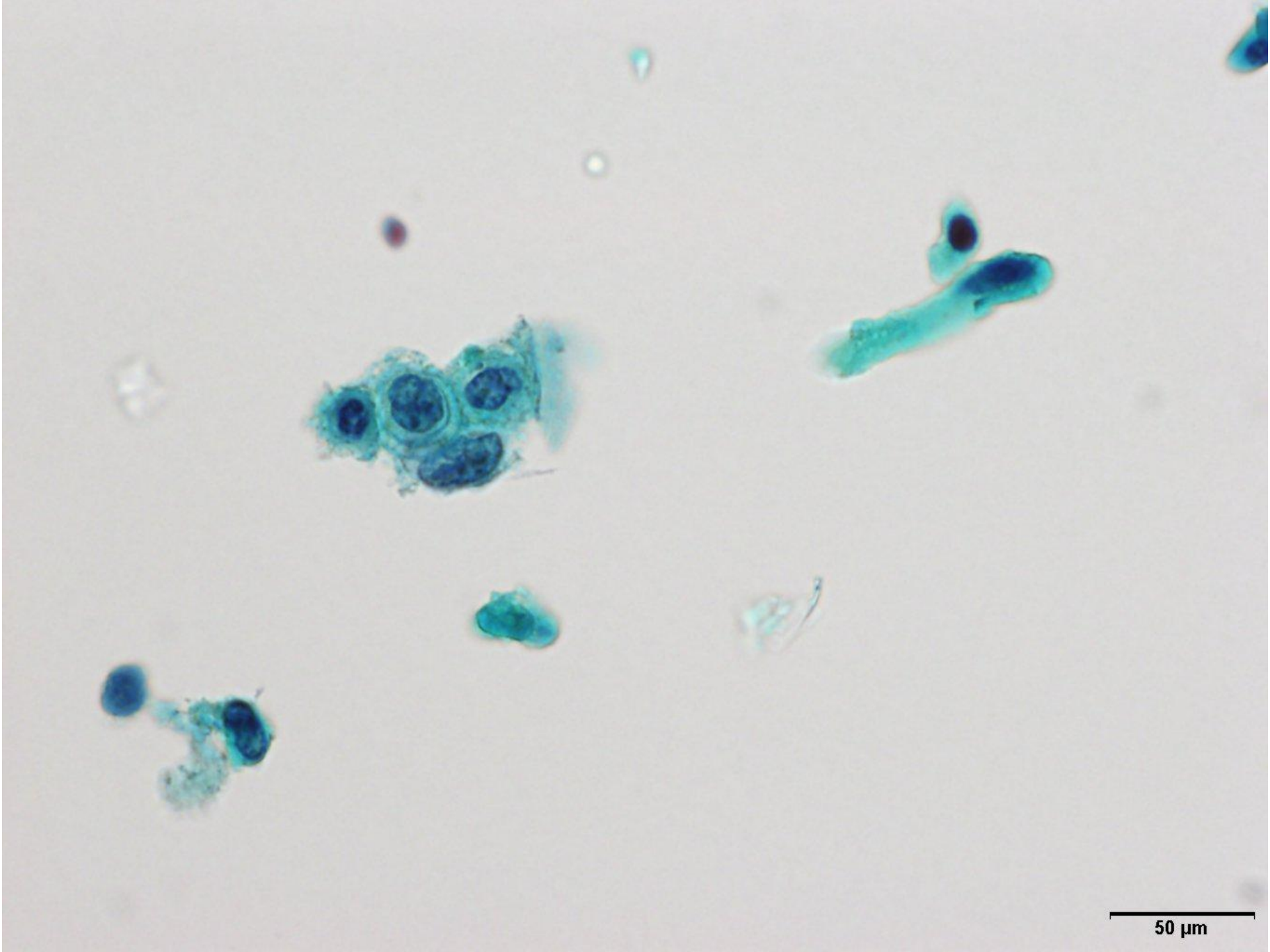
固定液：サイトコレクト液



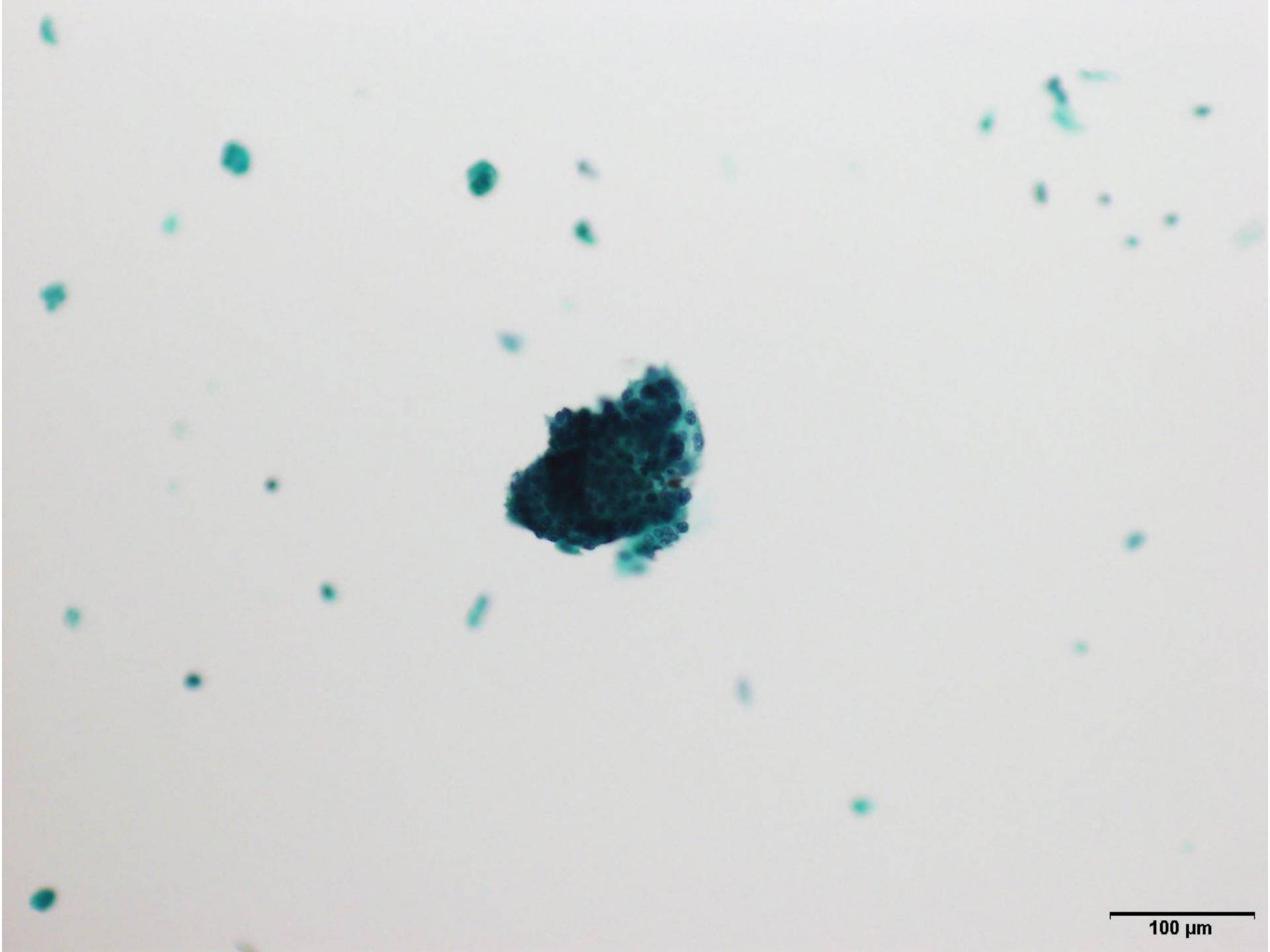
100  $\mu$ m



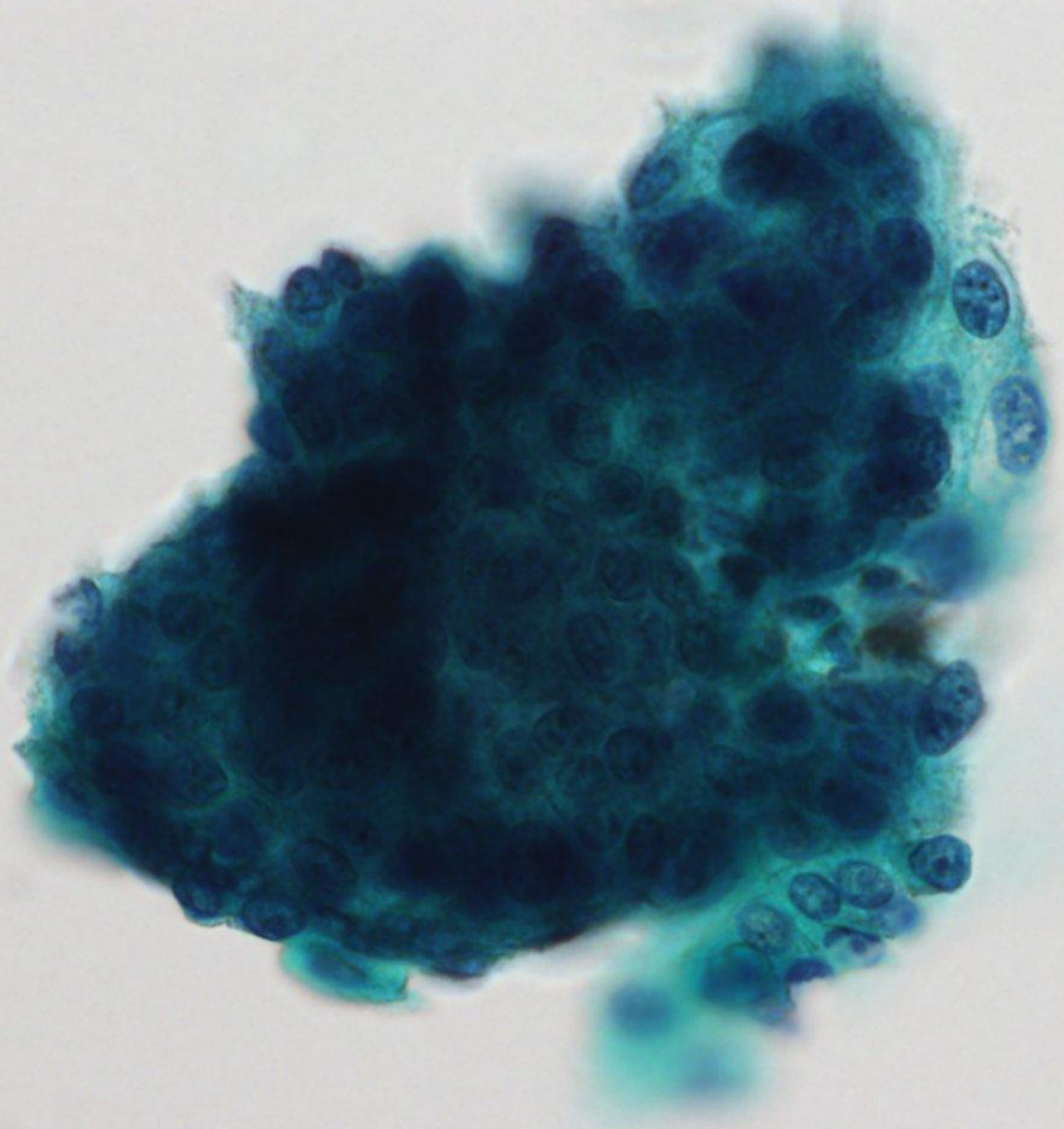
50 µm



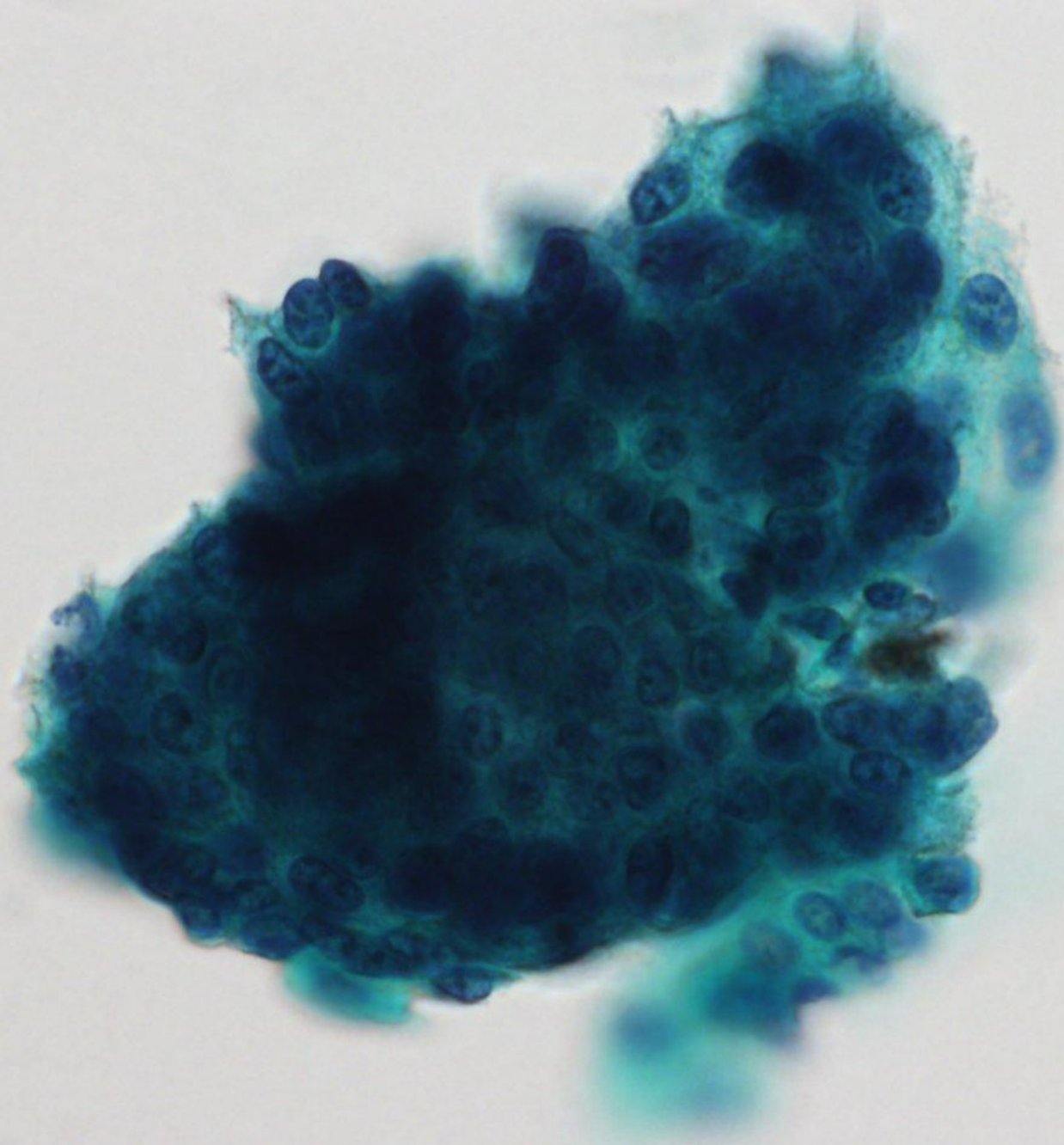
50  $\mu$ m



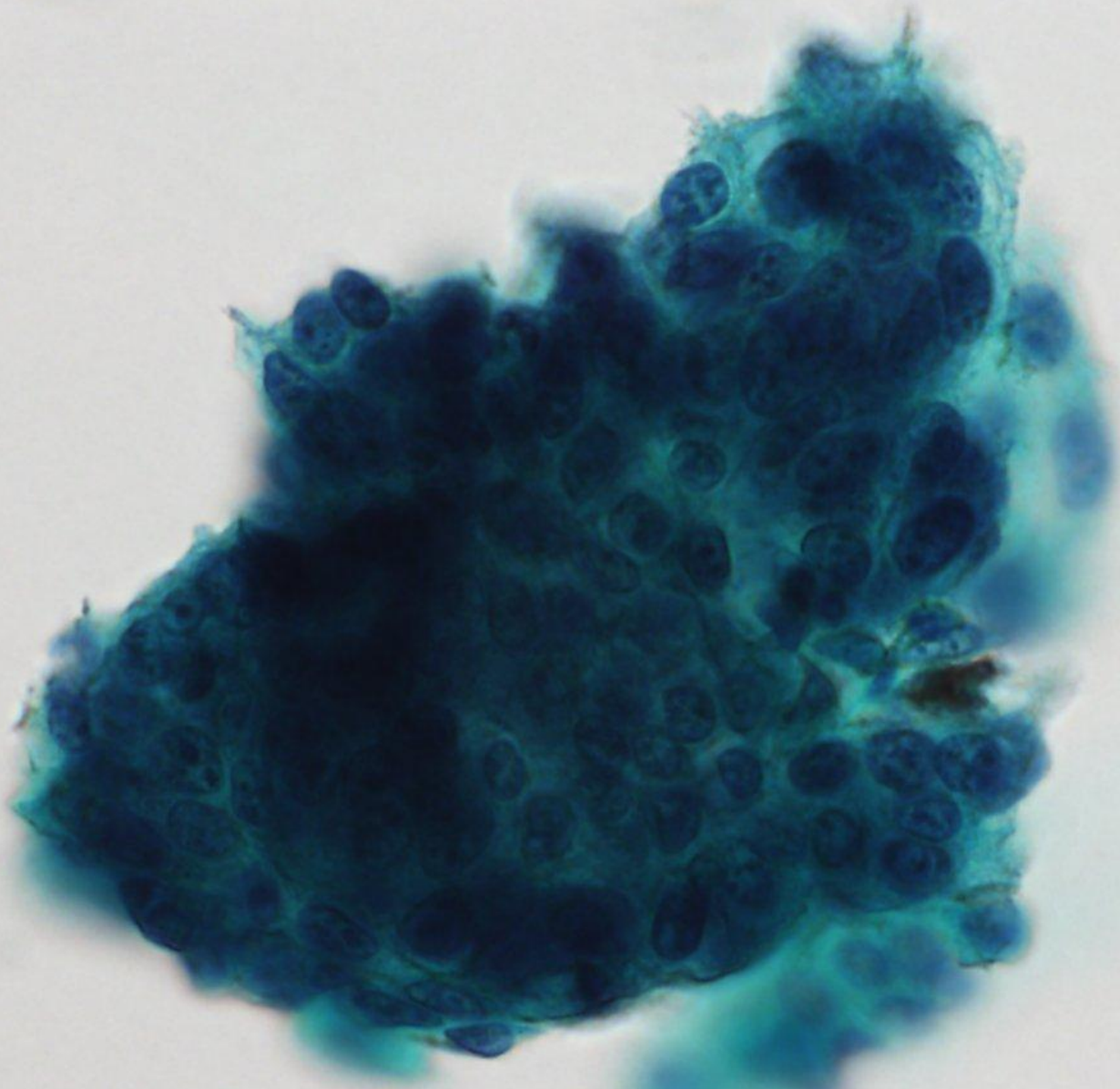
100 μm



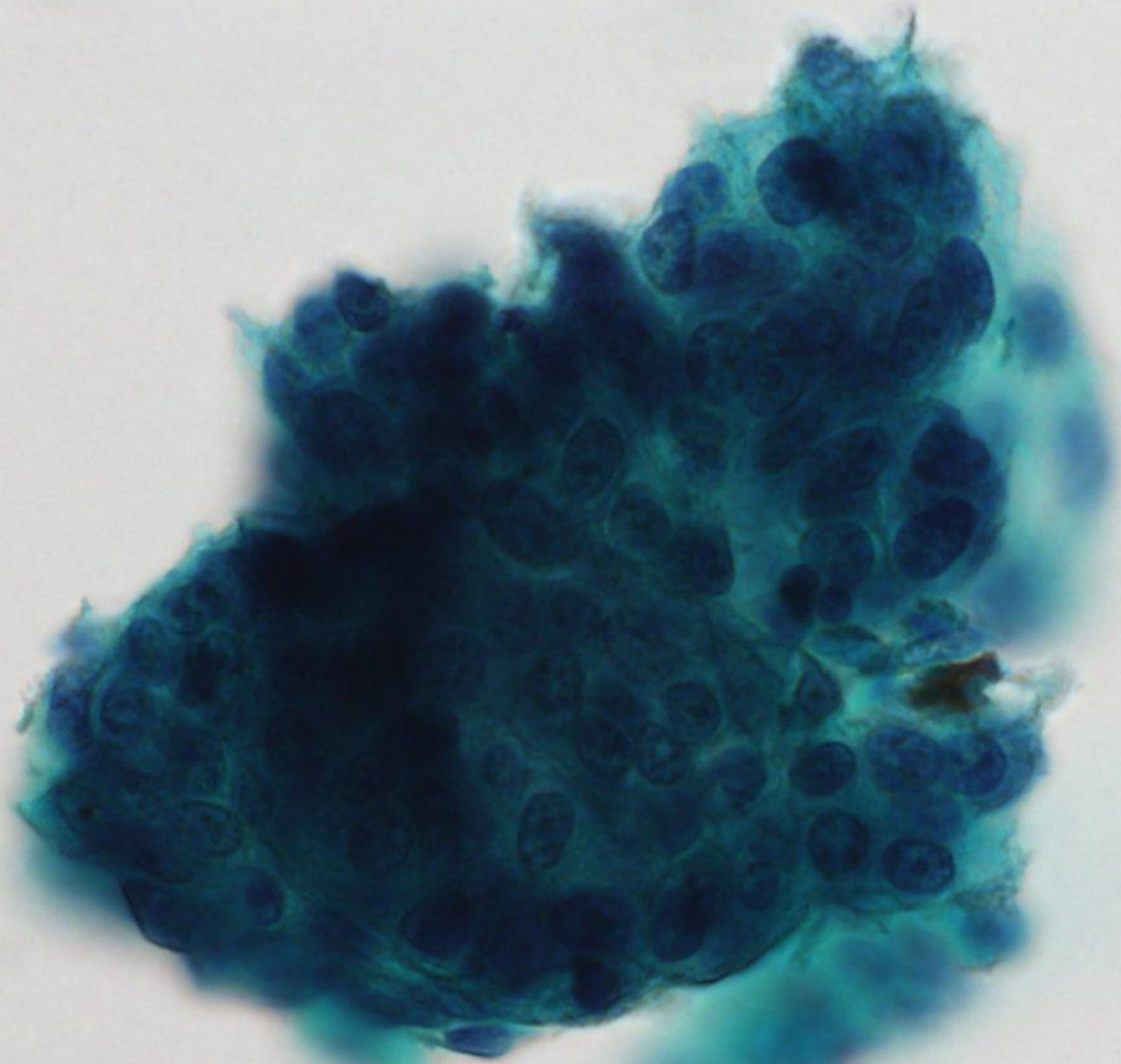
20  $\mu$ m



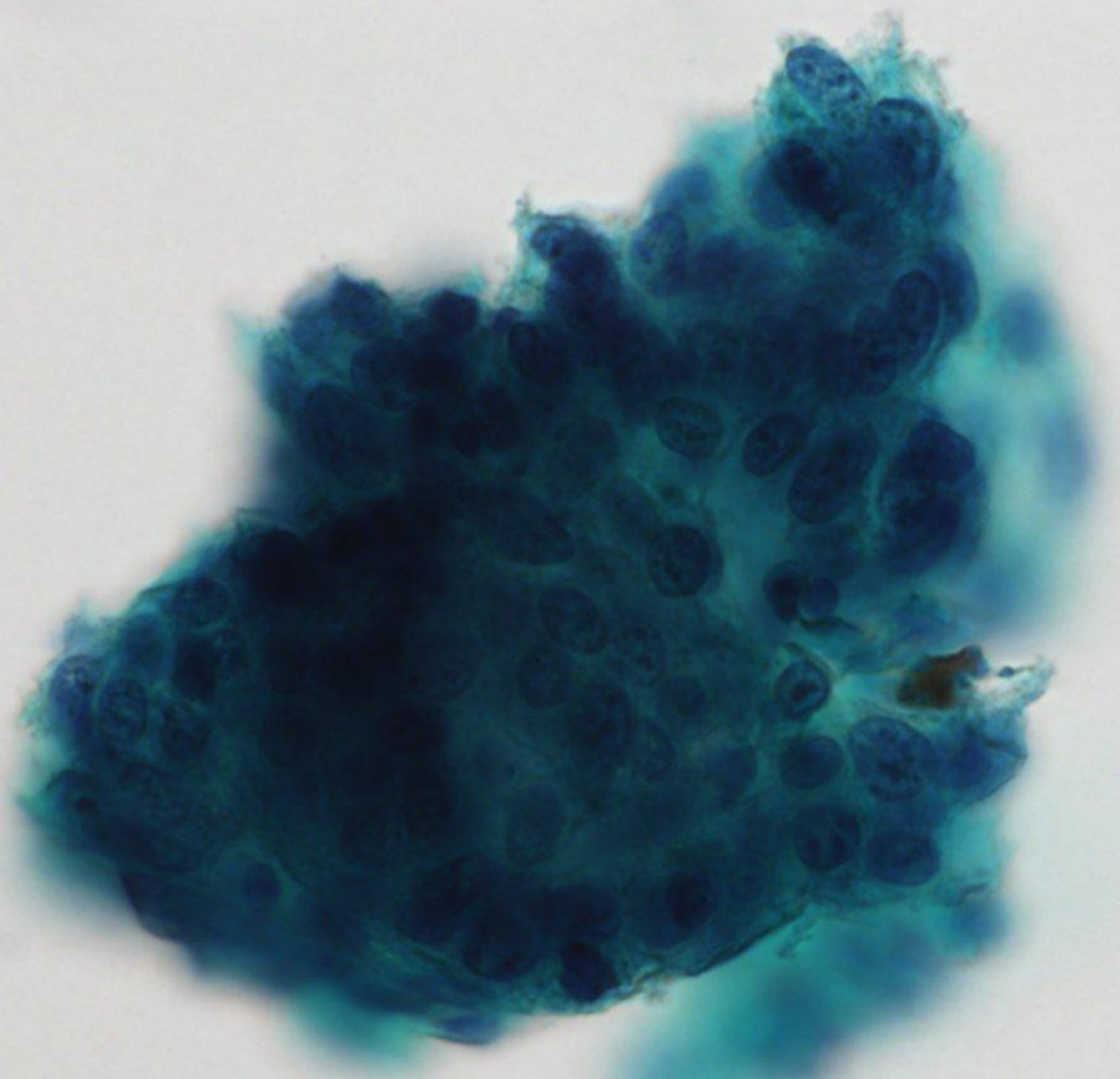
20  $\mu$ m



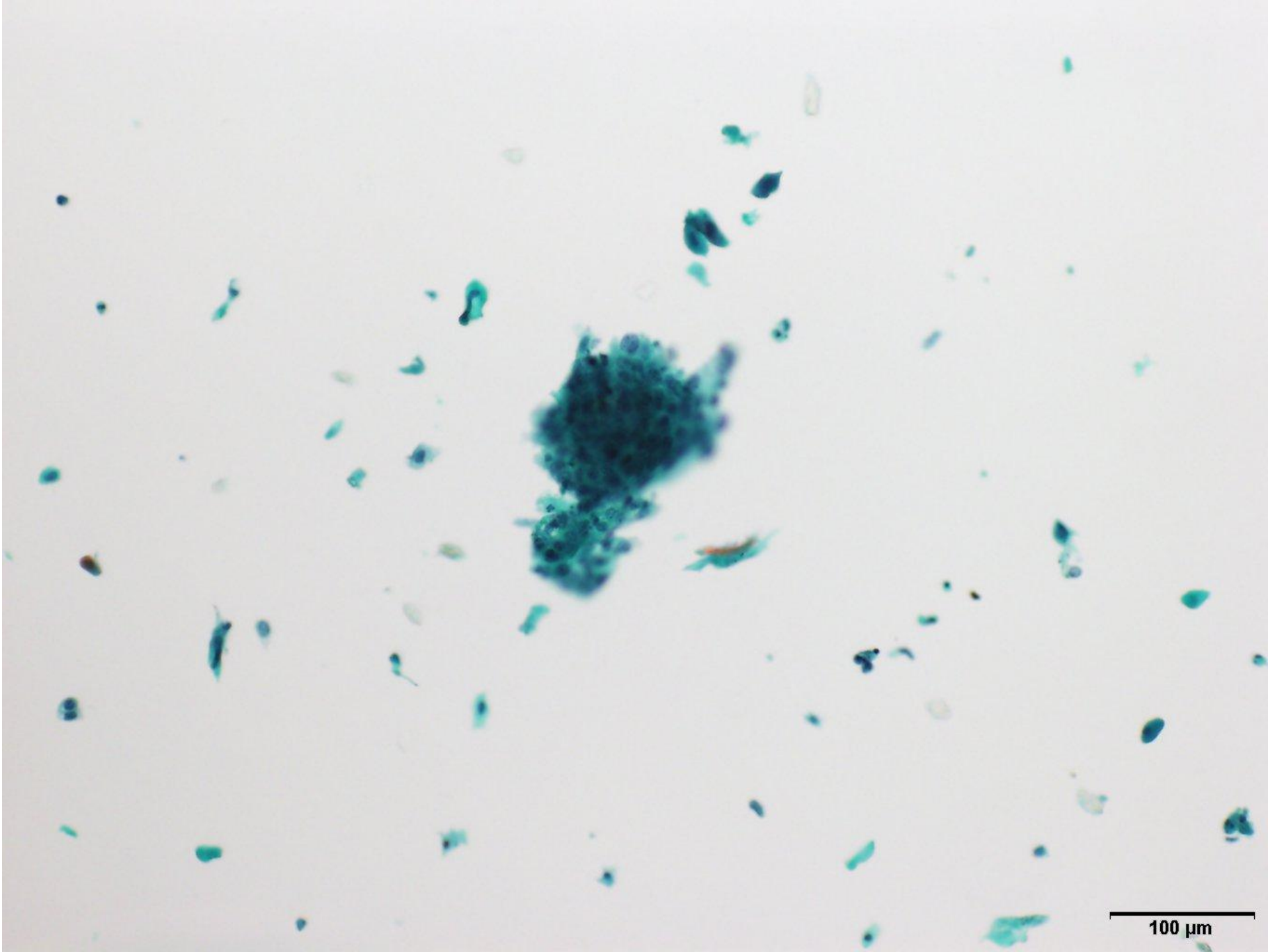
20  $\mu$ m



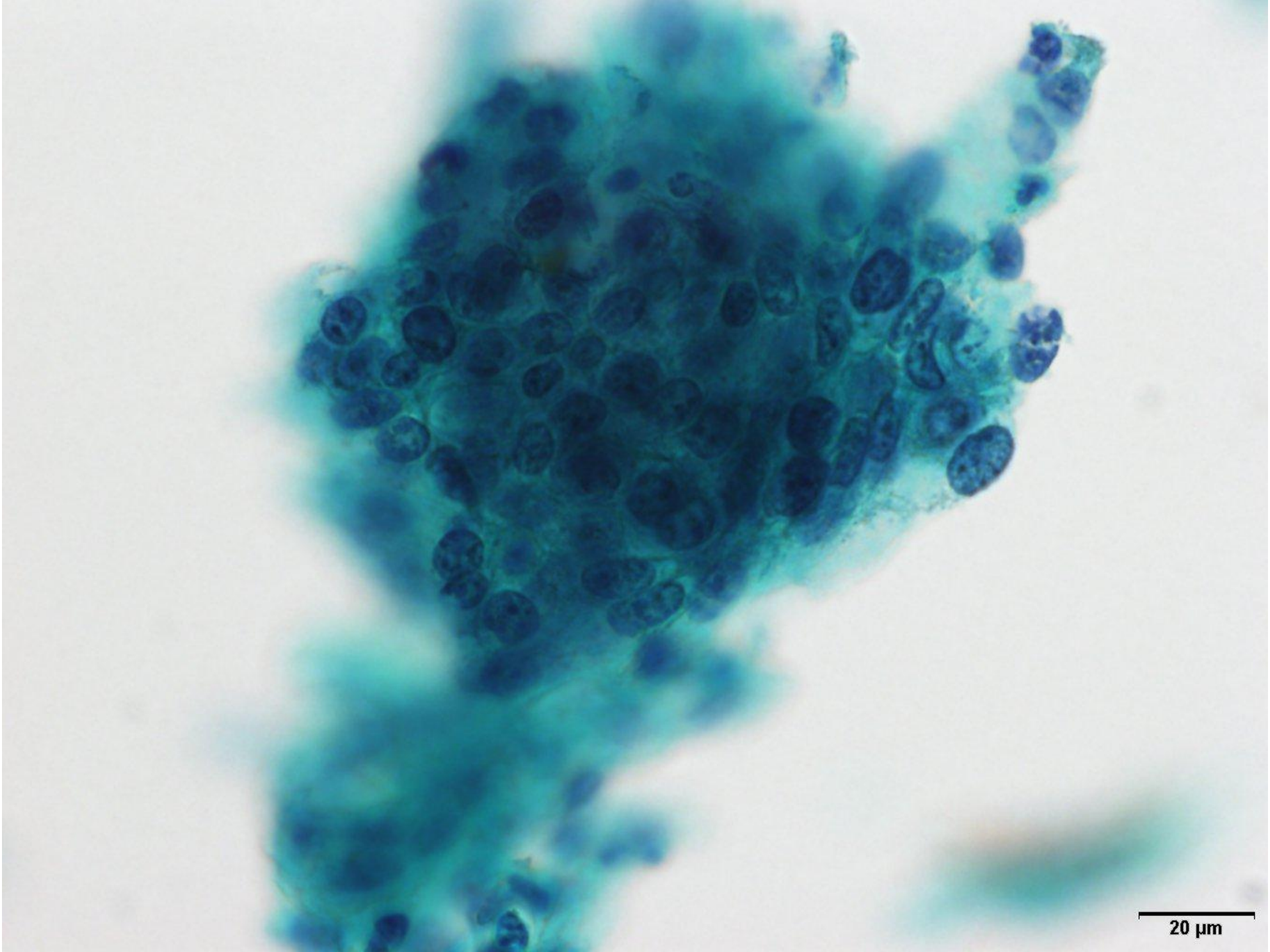
20  $\mu$ m



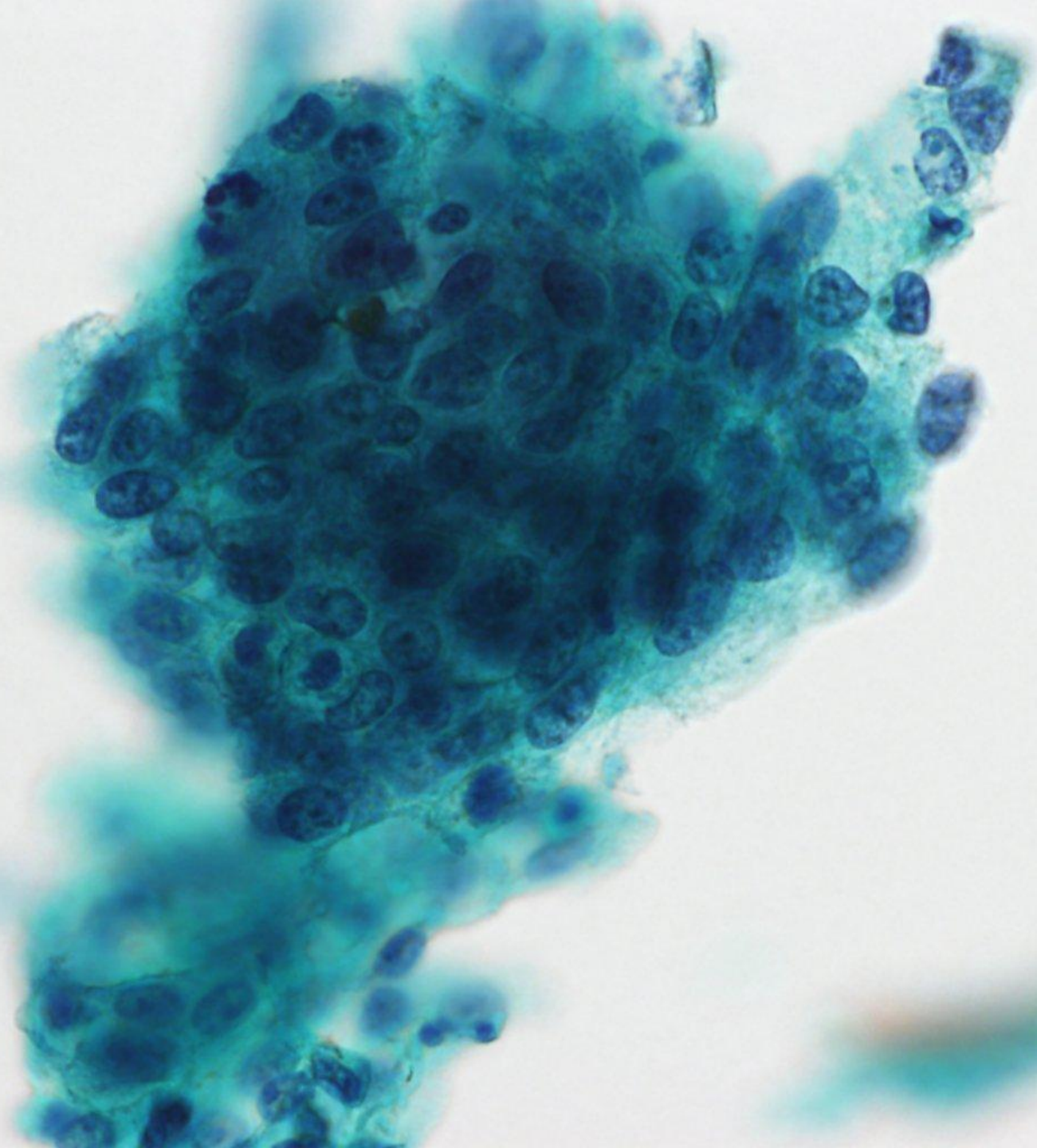
20  $\mu$ m



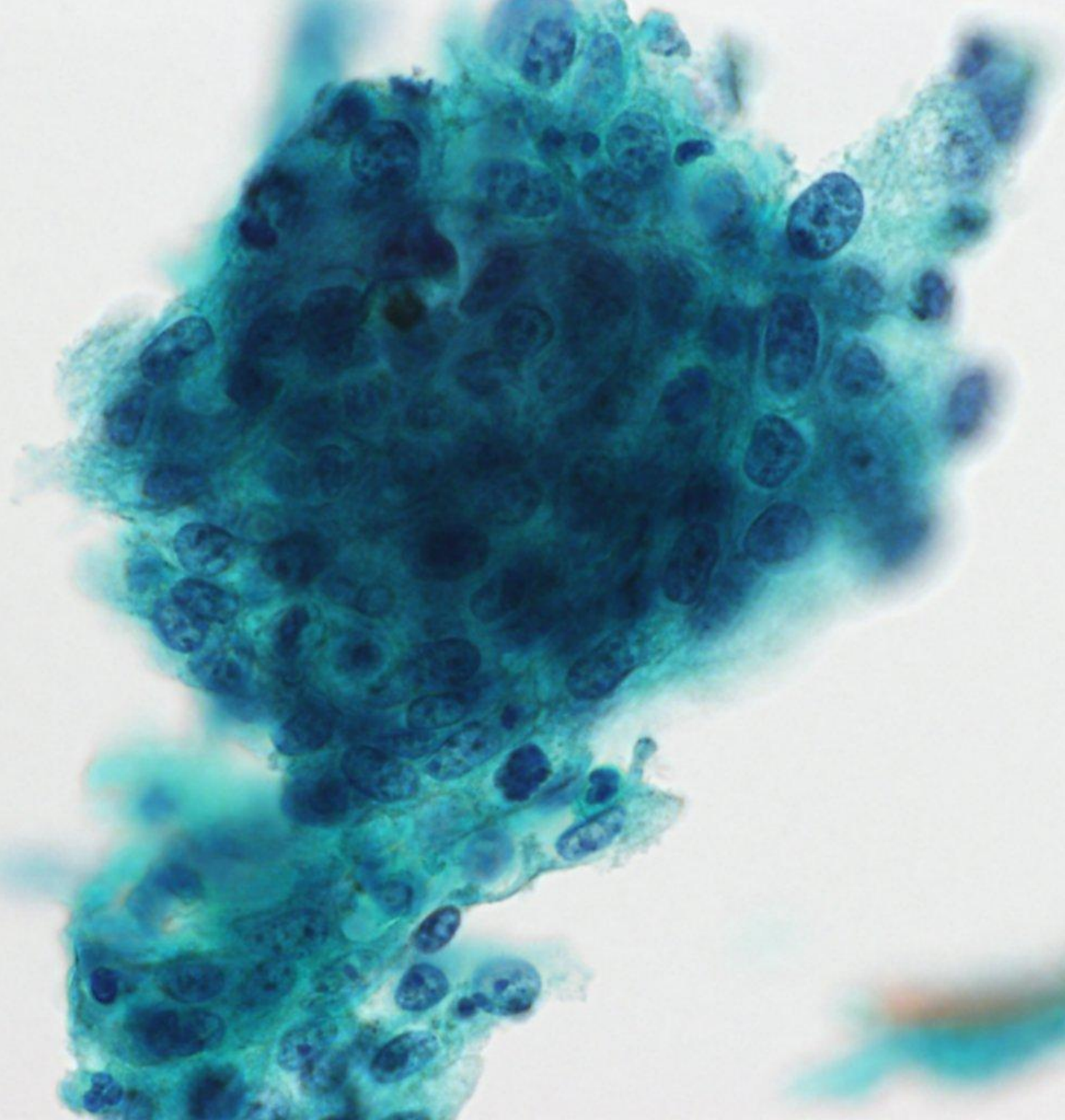
100 μm



20  $\mu$ m



20  $\mu$ m



20  $\mu$ m

# 事前解答選択肢

- 1) 扁平上皮癌
- 2) 腺癌

# 事前解答

[https://docs.google.com/forms/d/1-p4xO-M6vTy70N8OpvKXJwusBNewks6ix\\_F2m3aJkCQ/edit](https://docs.google.com/forms/d/1-p4xO-M6vTy70N8OpvKXJwusBNewks6ix_F2m3aJkCQ/edit)

