

# 第41回埼玉県細胞検査士会学術集会

症例検討会 気管支擦過

# 症例検討 気管支擦過

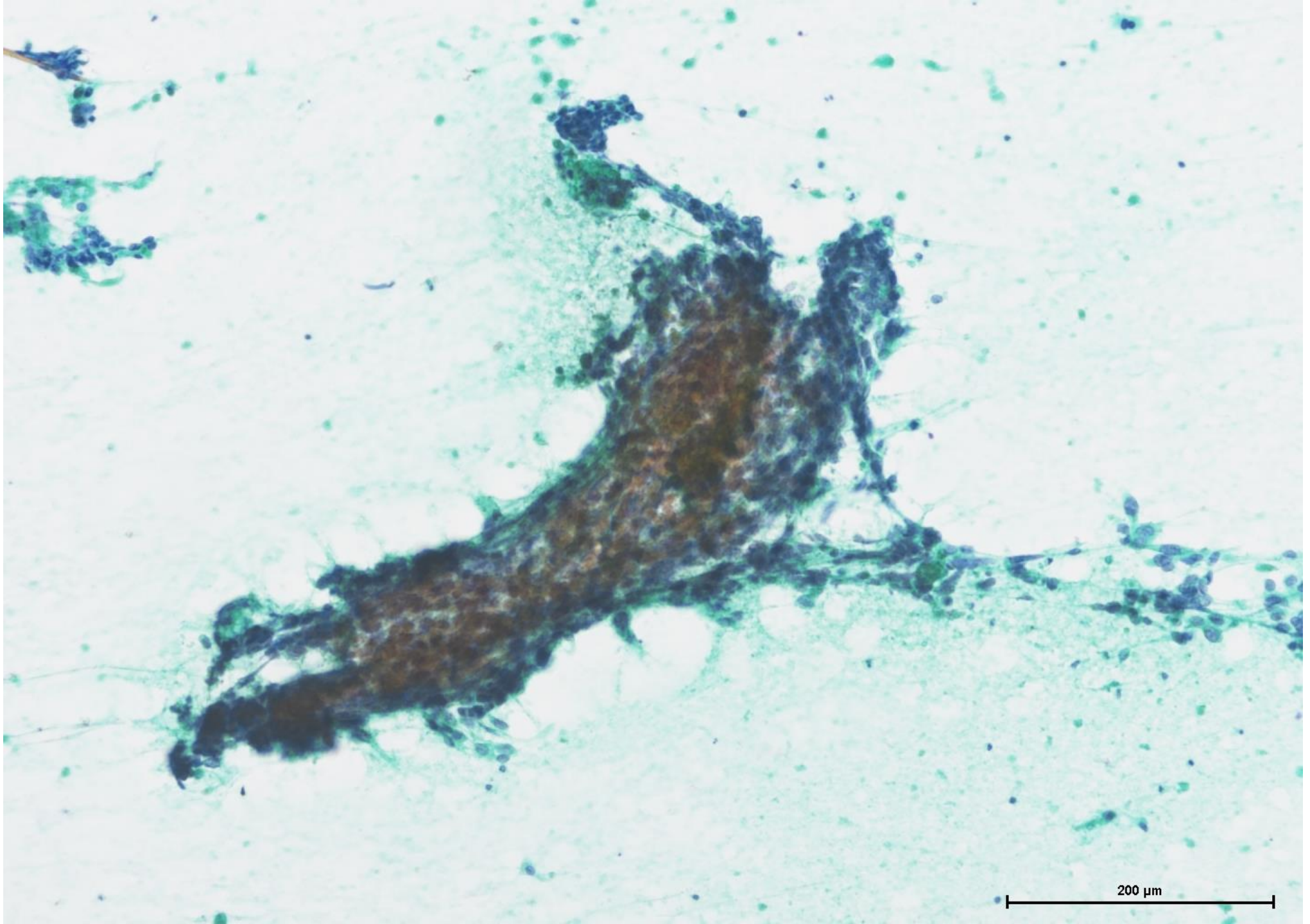
患者：60代，男性

臨床情報：原発性肺癌疑い

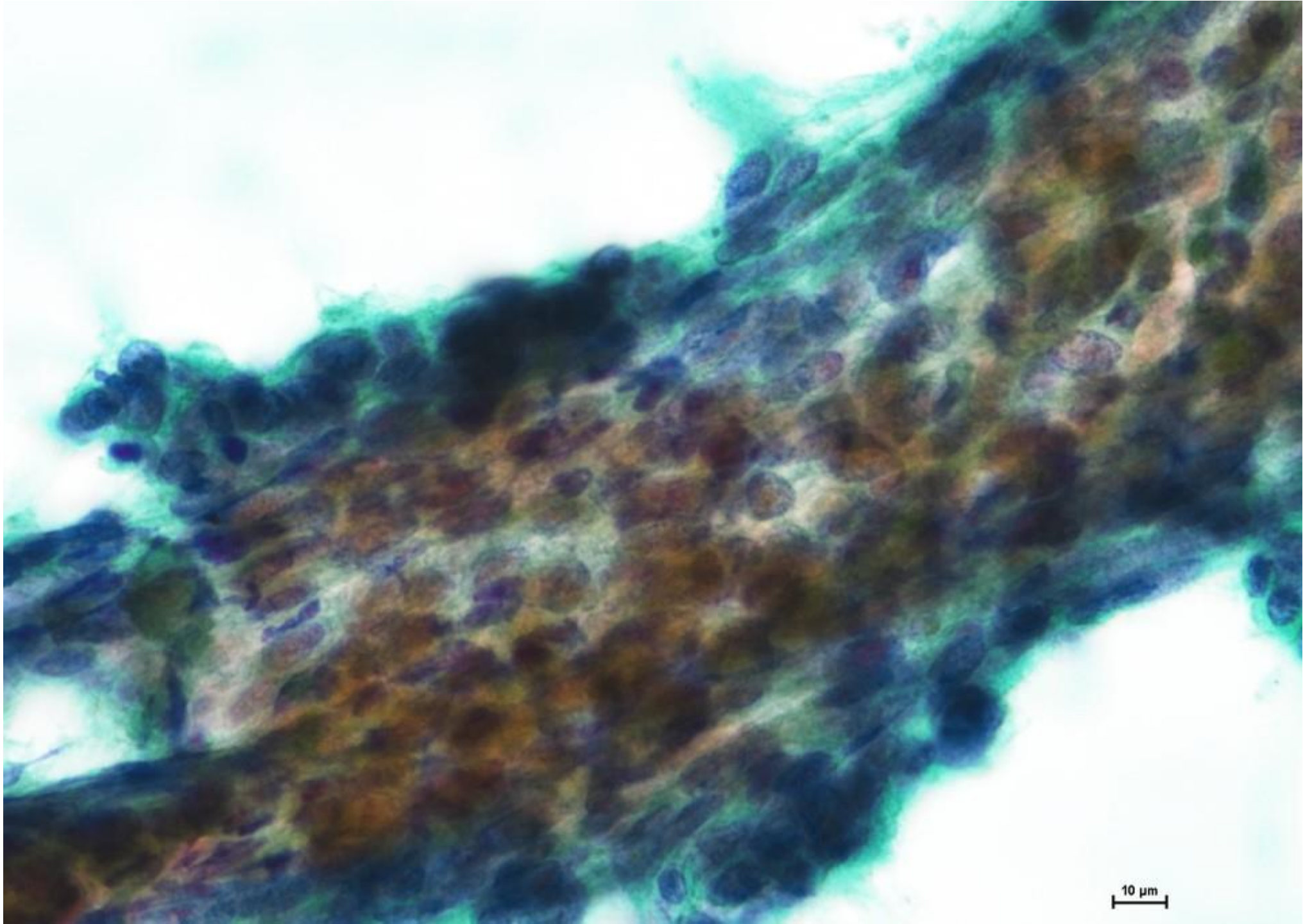
材料：気管支ブラシ擦過

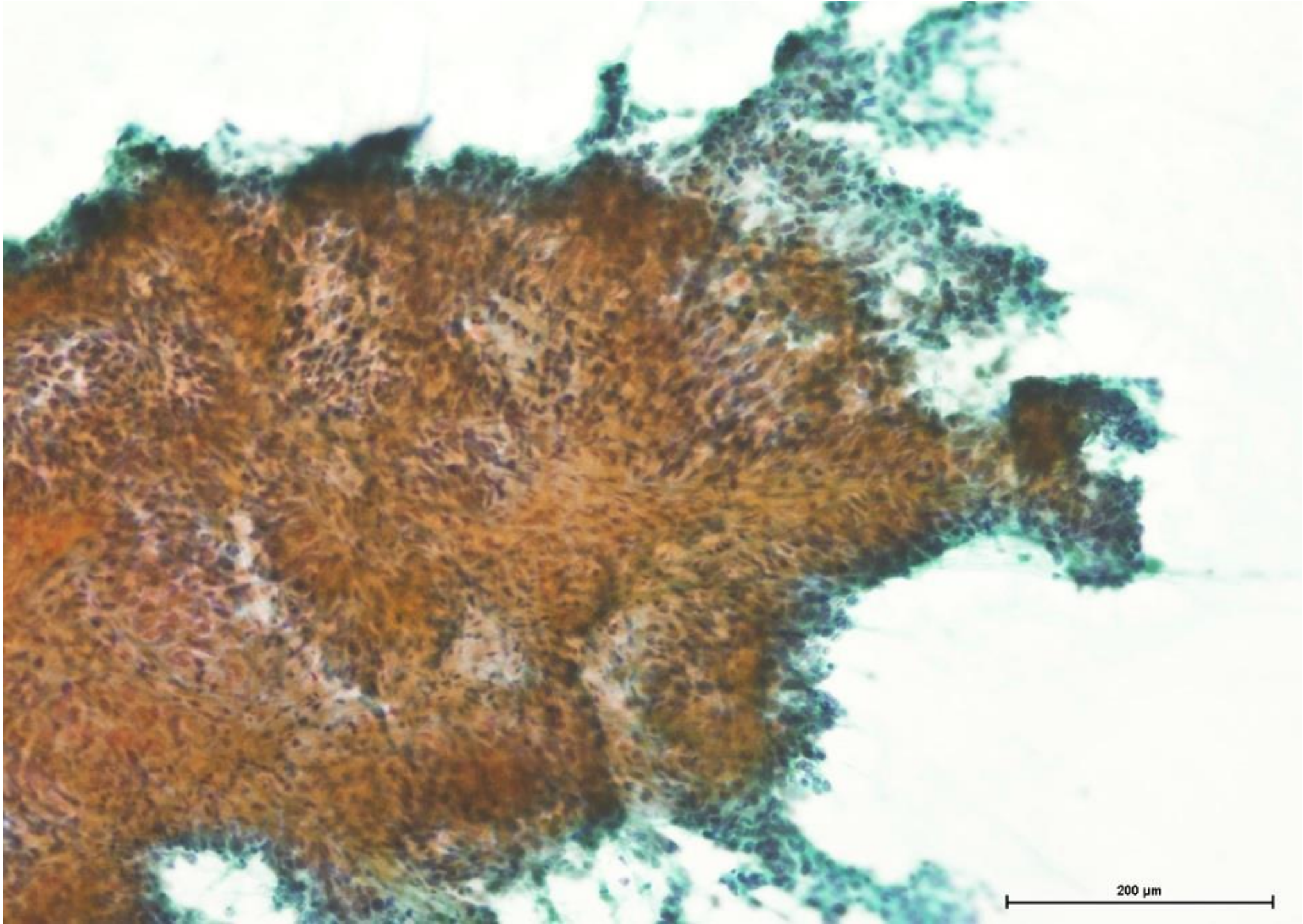
標本作製：直接塗抹法（1～5枚目）

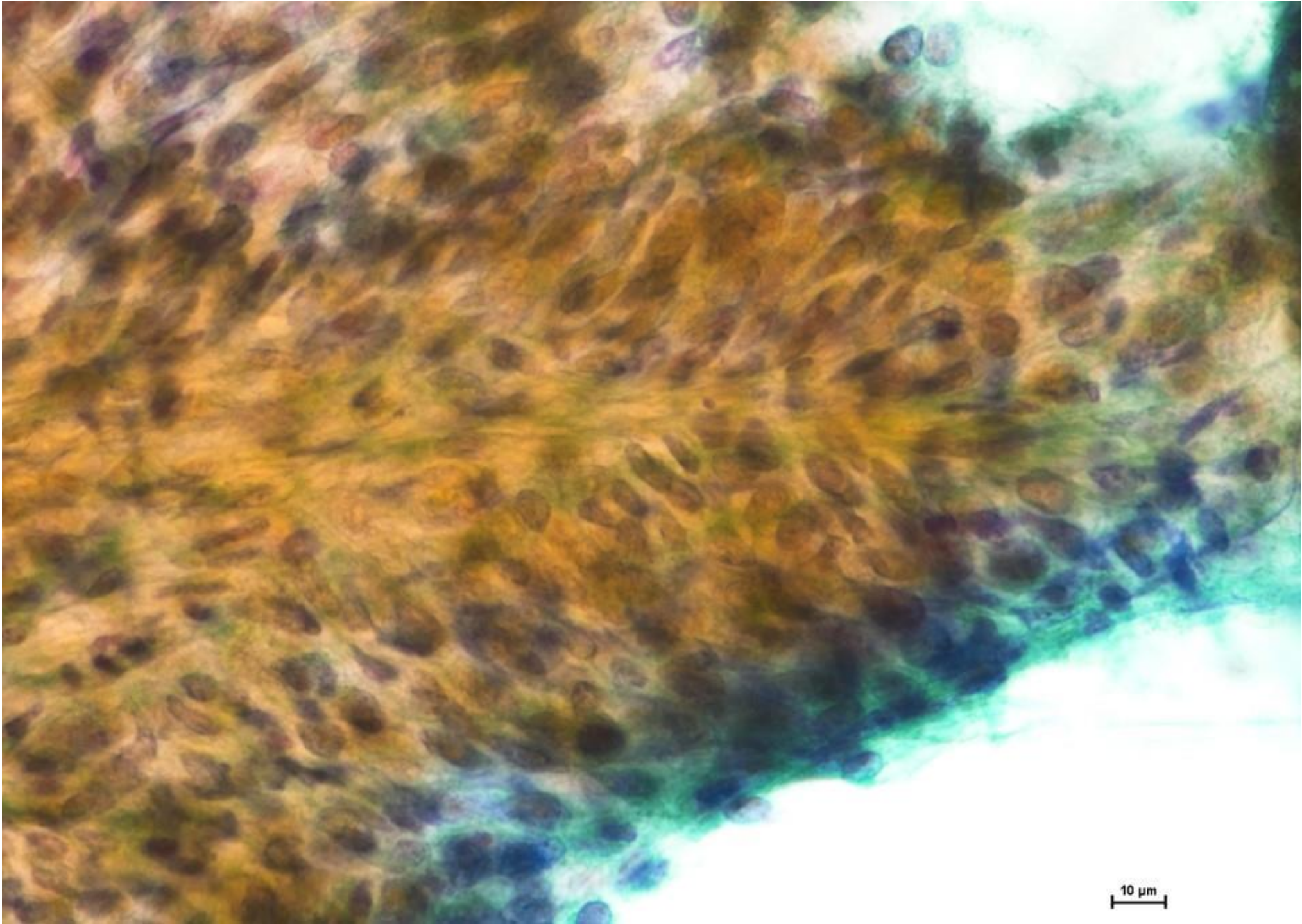
LBP（CellPrep）（6枚目）

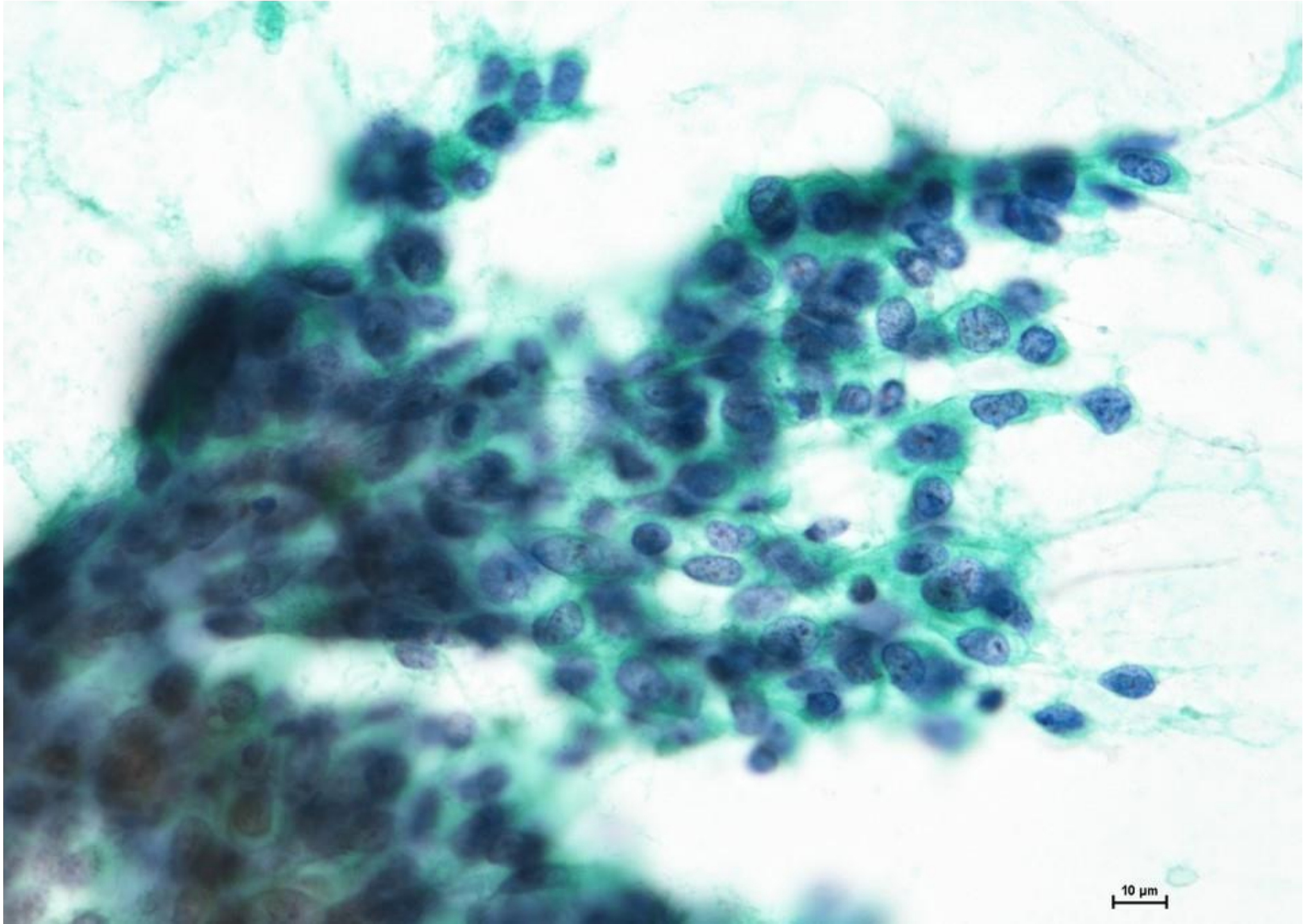


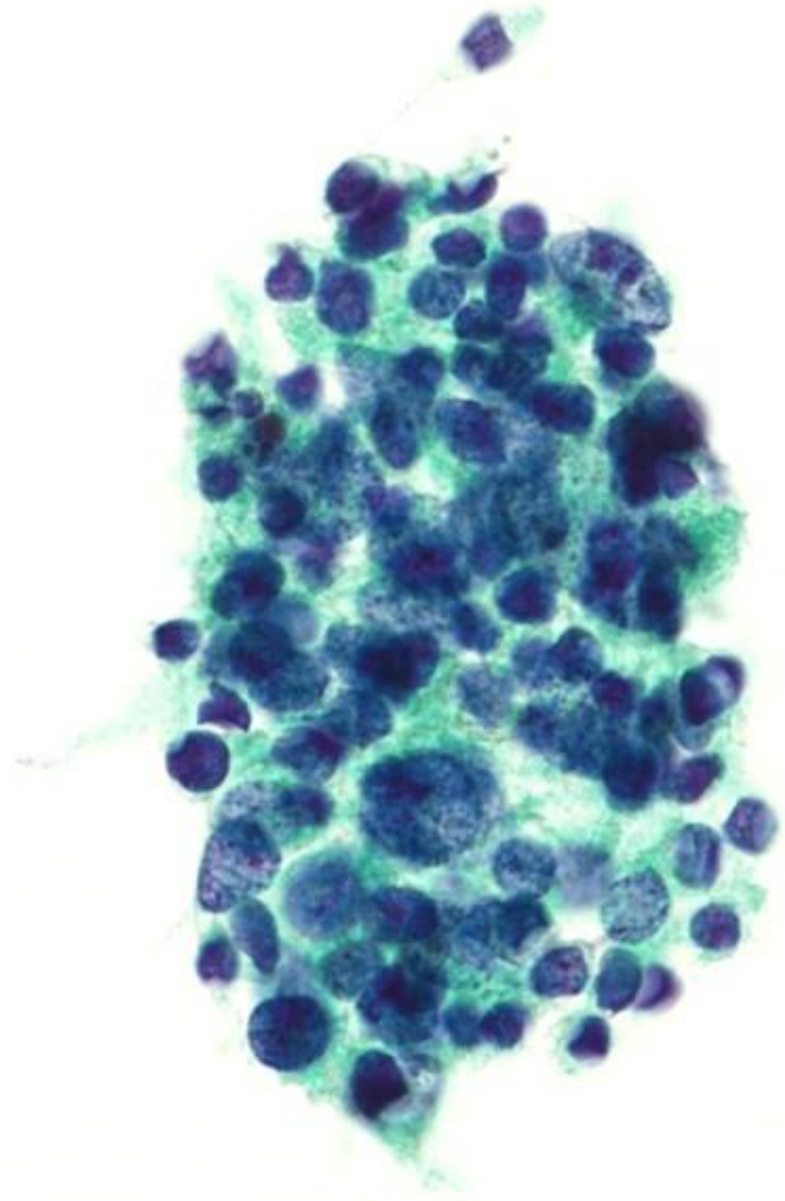
200 μm











10  $\mu$ m

# 組織型は？

- ① Squamous cell carcinoma
- ② Adenocarcinoma
- ③ Non-Small cell Carcinoma

# 事前集計結果

- |   |                          |    |
|---|--------------------------|----|
| ① | Squamous cell carcinoma  | 9名 |
| ② | Adenocarcinoma           | 6名 |
| ③ | Non-Small cell Carcinoma | 8名 |

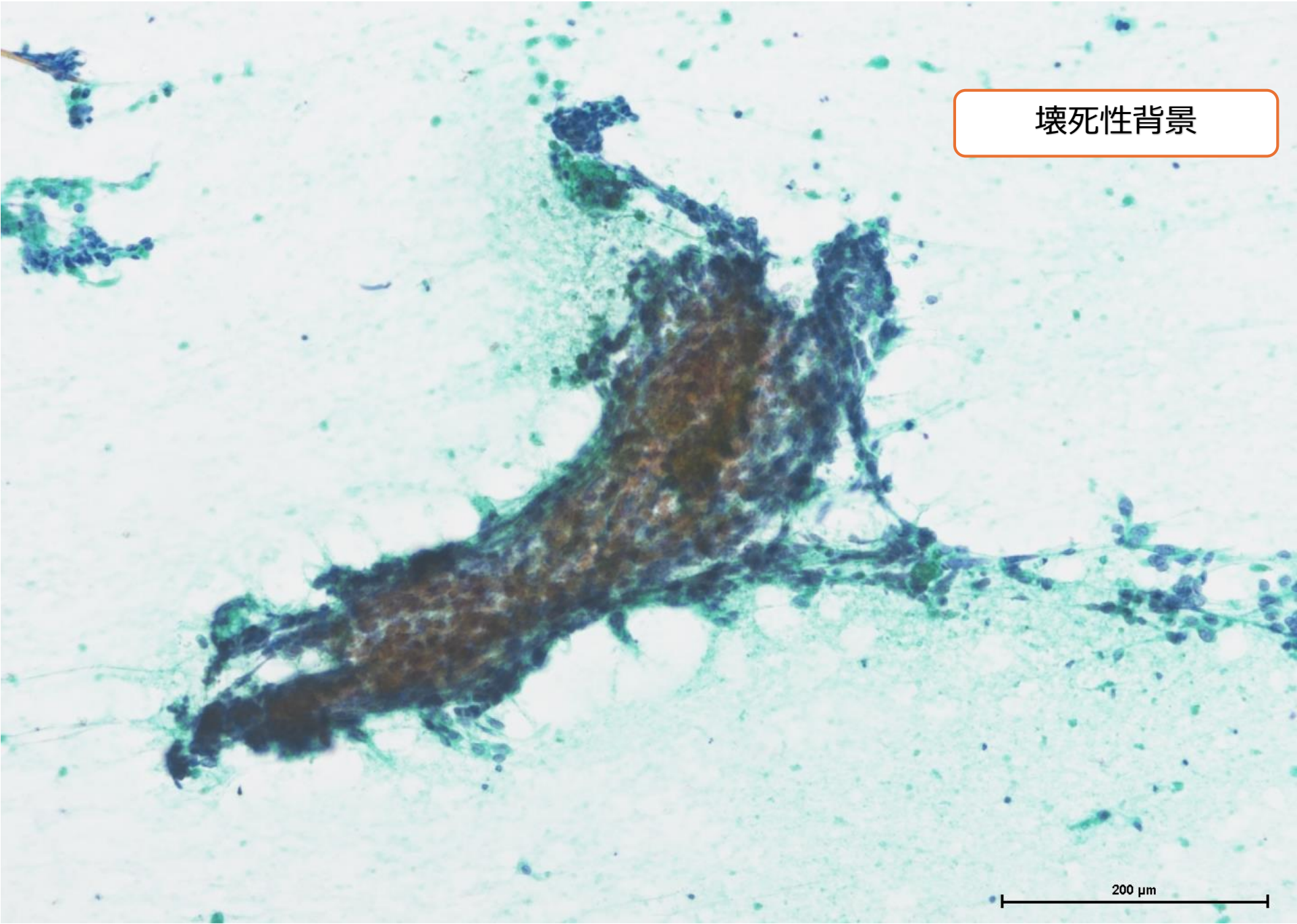
# 当日集計結果

- ① Squamous cell carcinoma 36名
- ② Adenocarcinoma 5名
- ③ Non-Small cell Carcinoma 6名

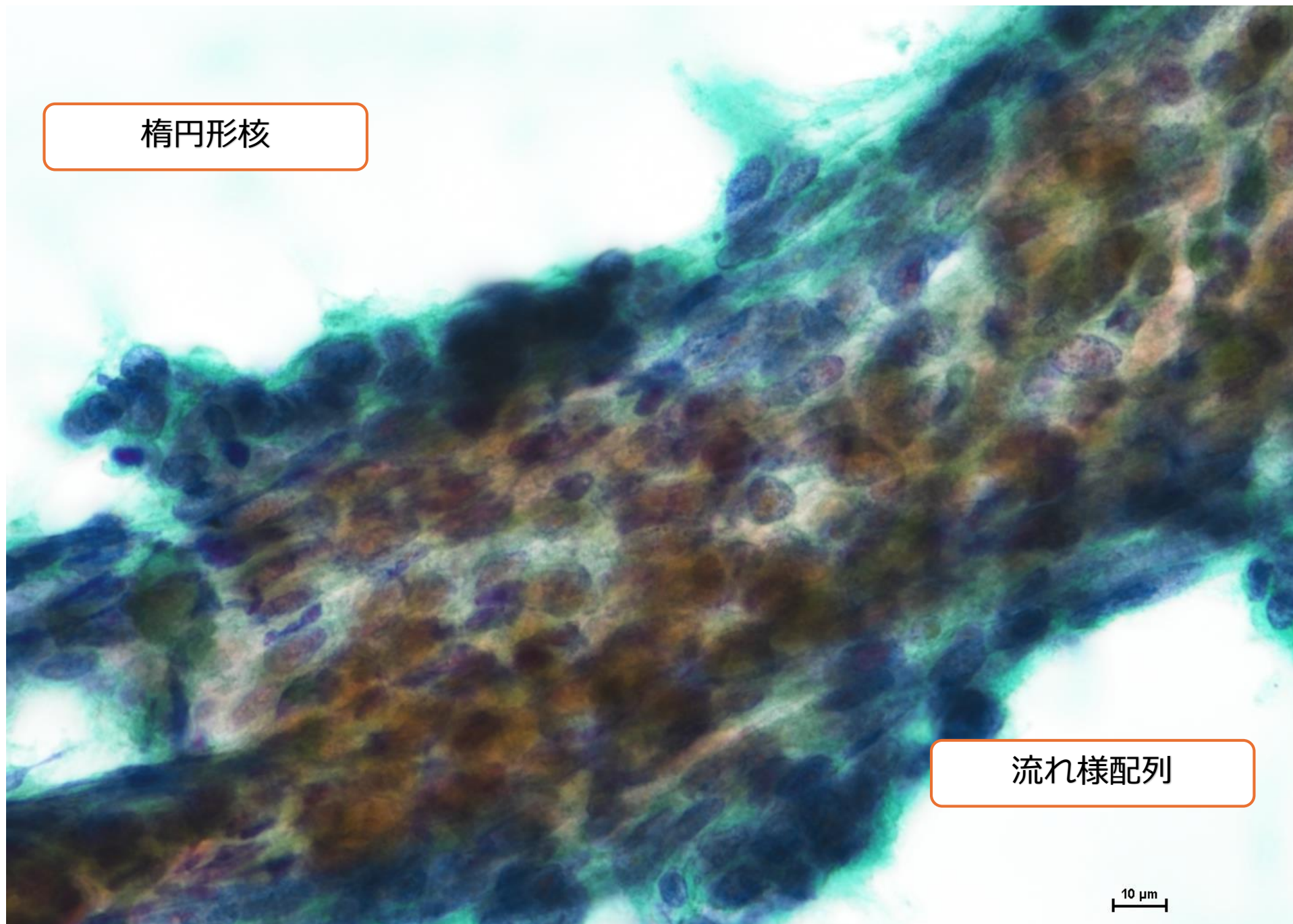
# 解 説

壞死性背景

200  $\mu\text{m}$

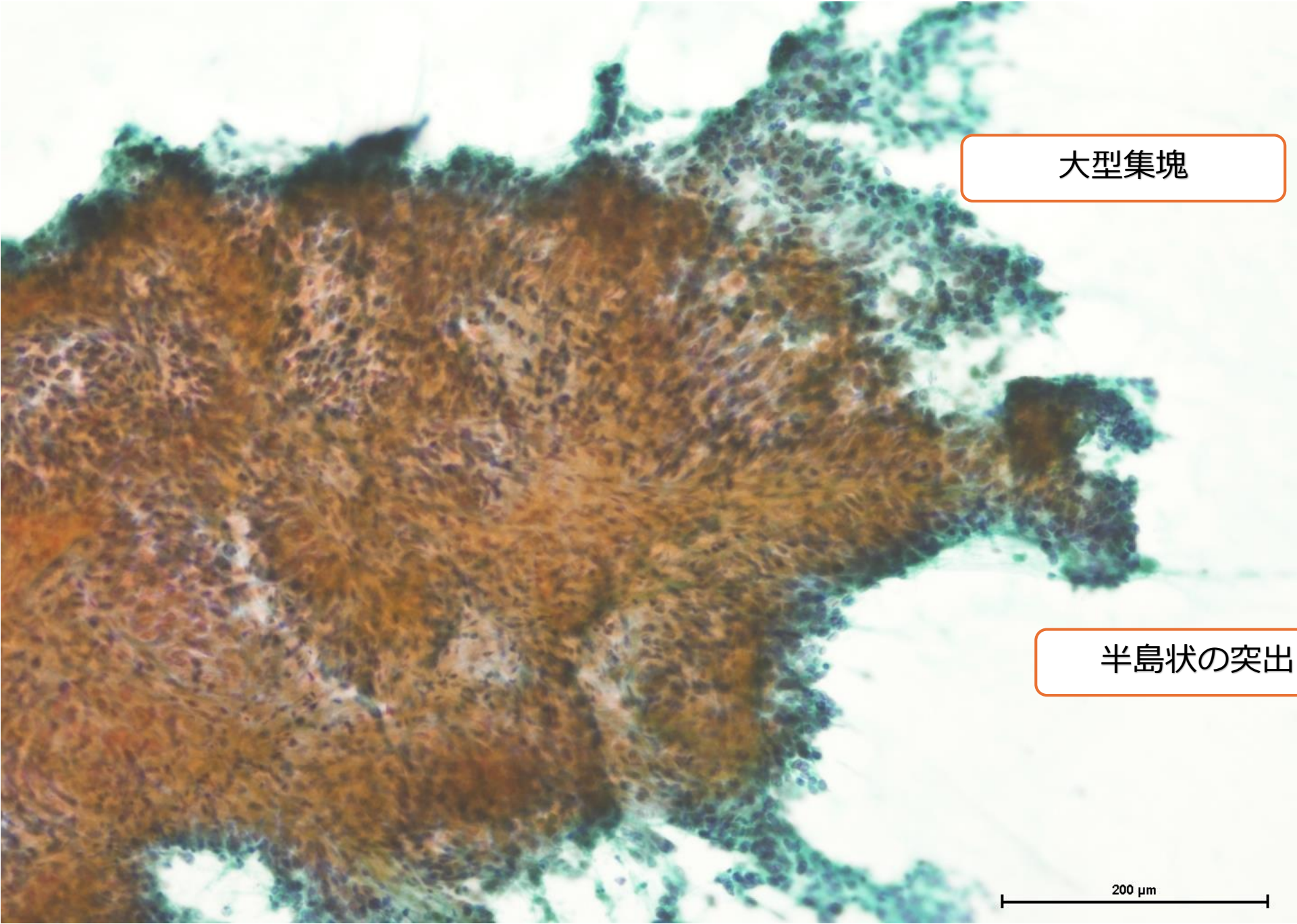


楕円形核



流れ様配列

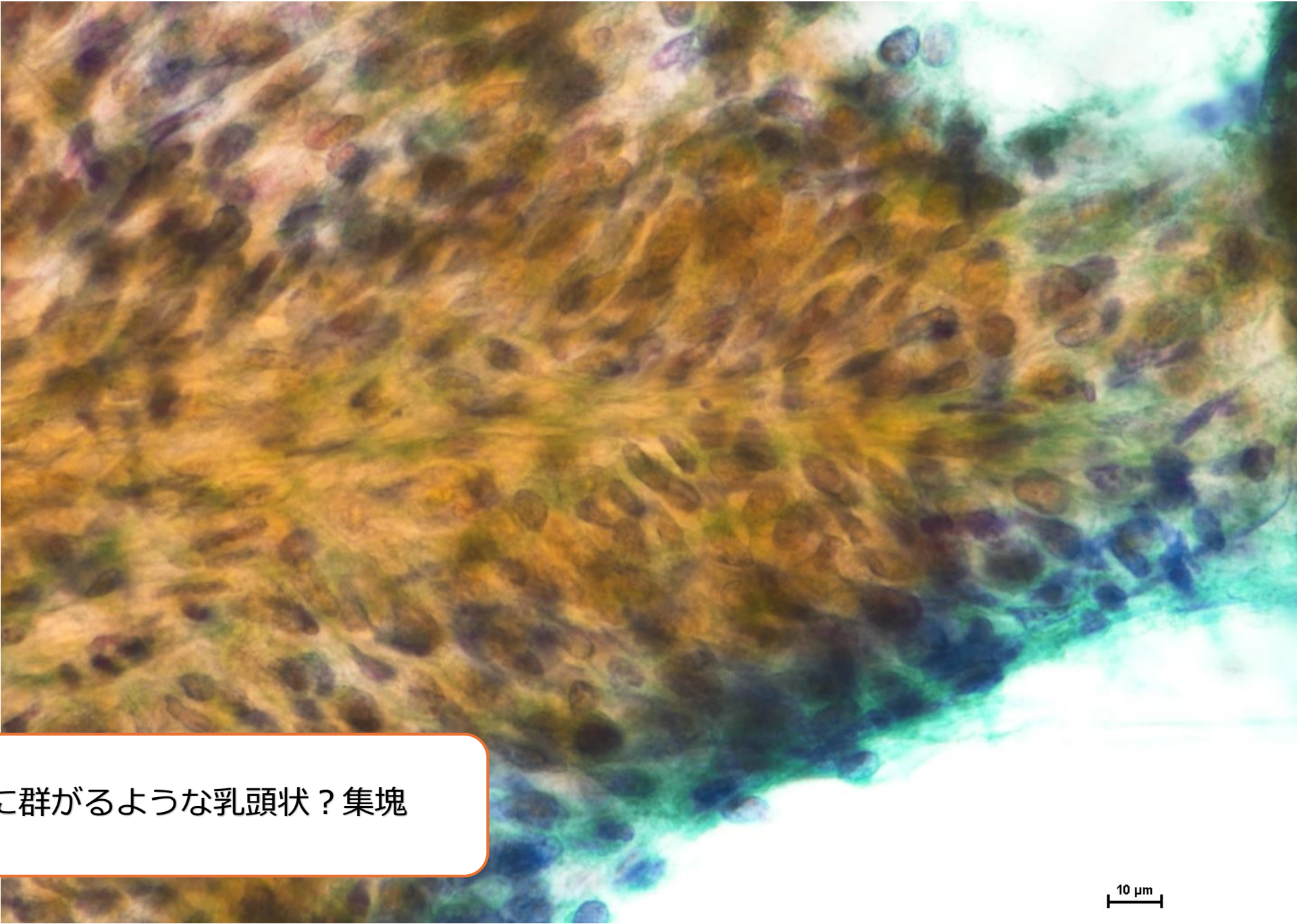
10  $\mu$ m



大型集塊

半島状の突出

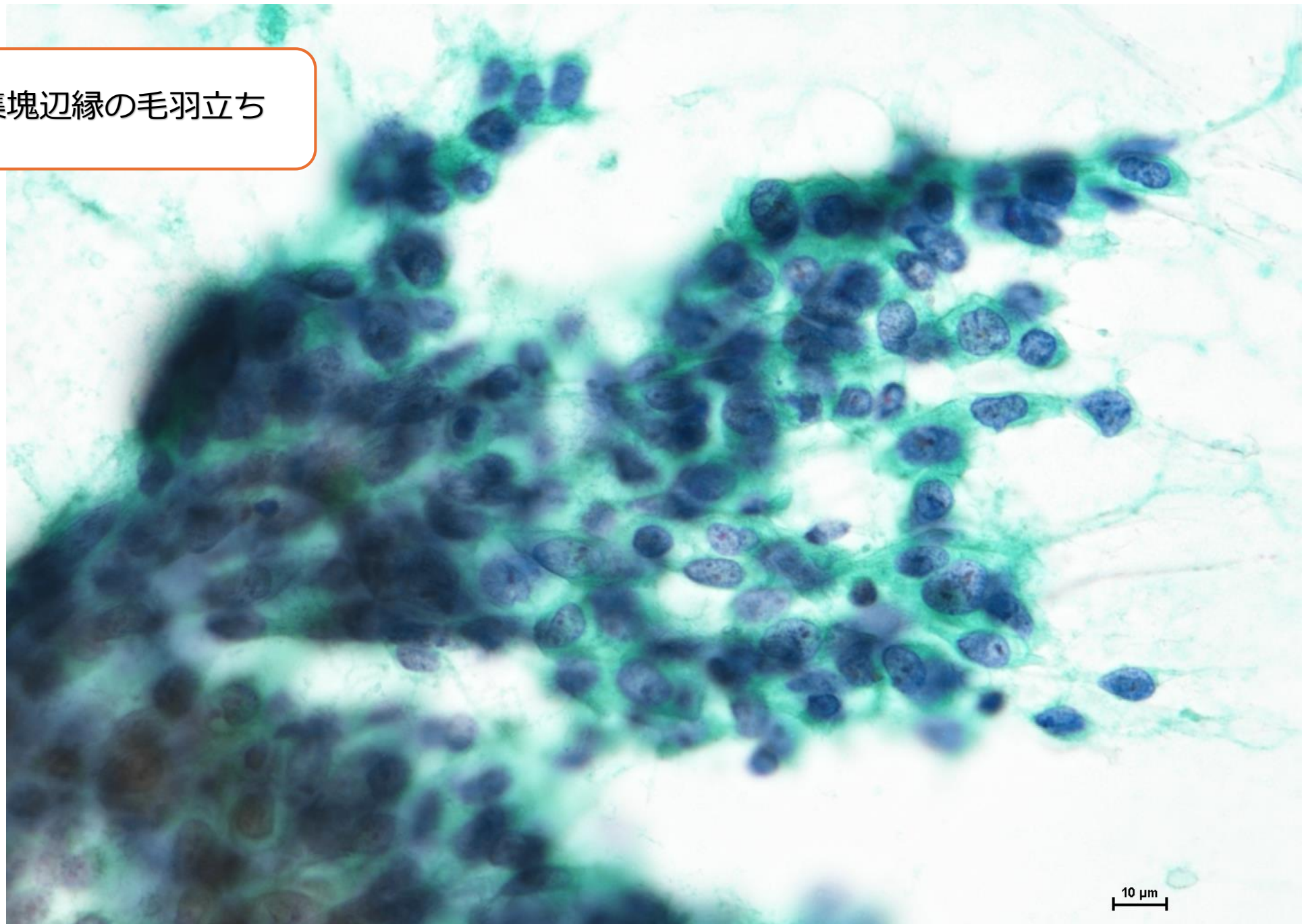
200 μm



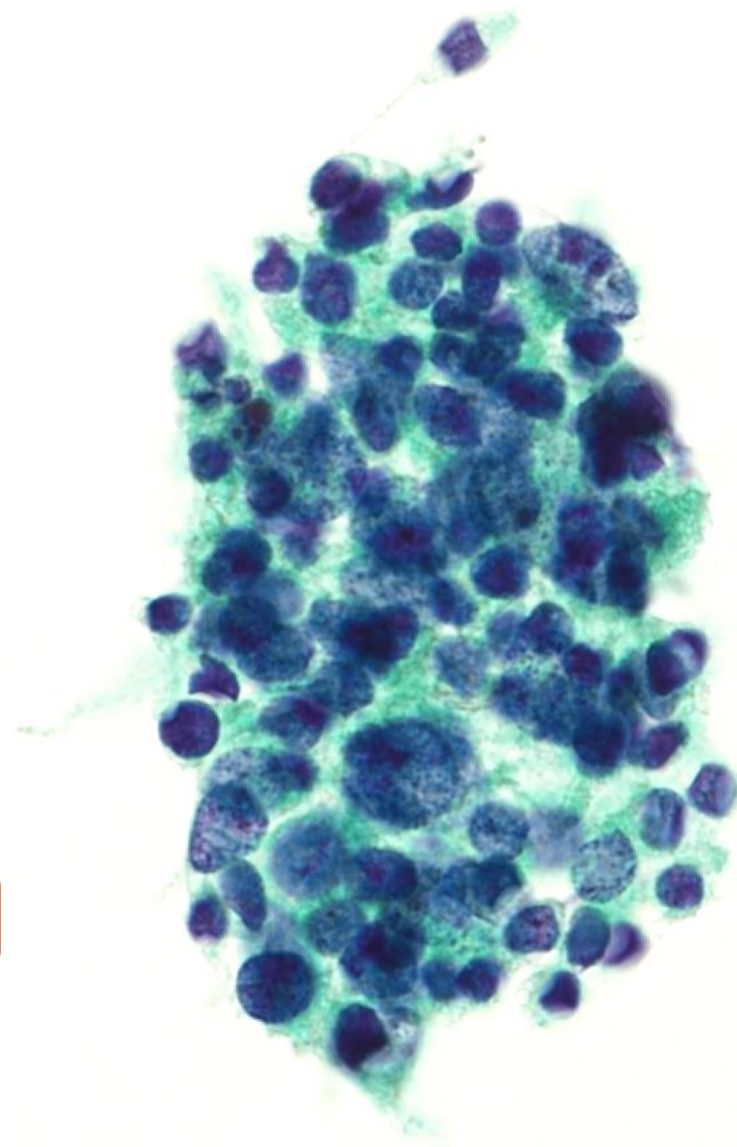
間質軸に群がるような乳頭状？集塊

10  $\mu$ m

細胞集塊辺縁の毛羽立ち



細胞質は融解状



濃縮状の核

球状の重積集塊？

10  $\mu$ m

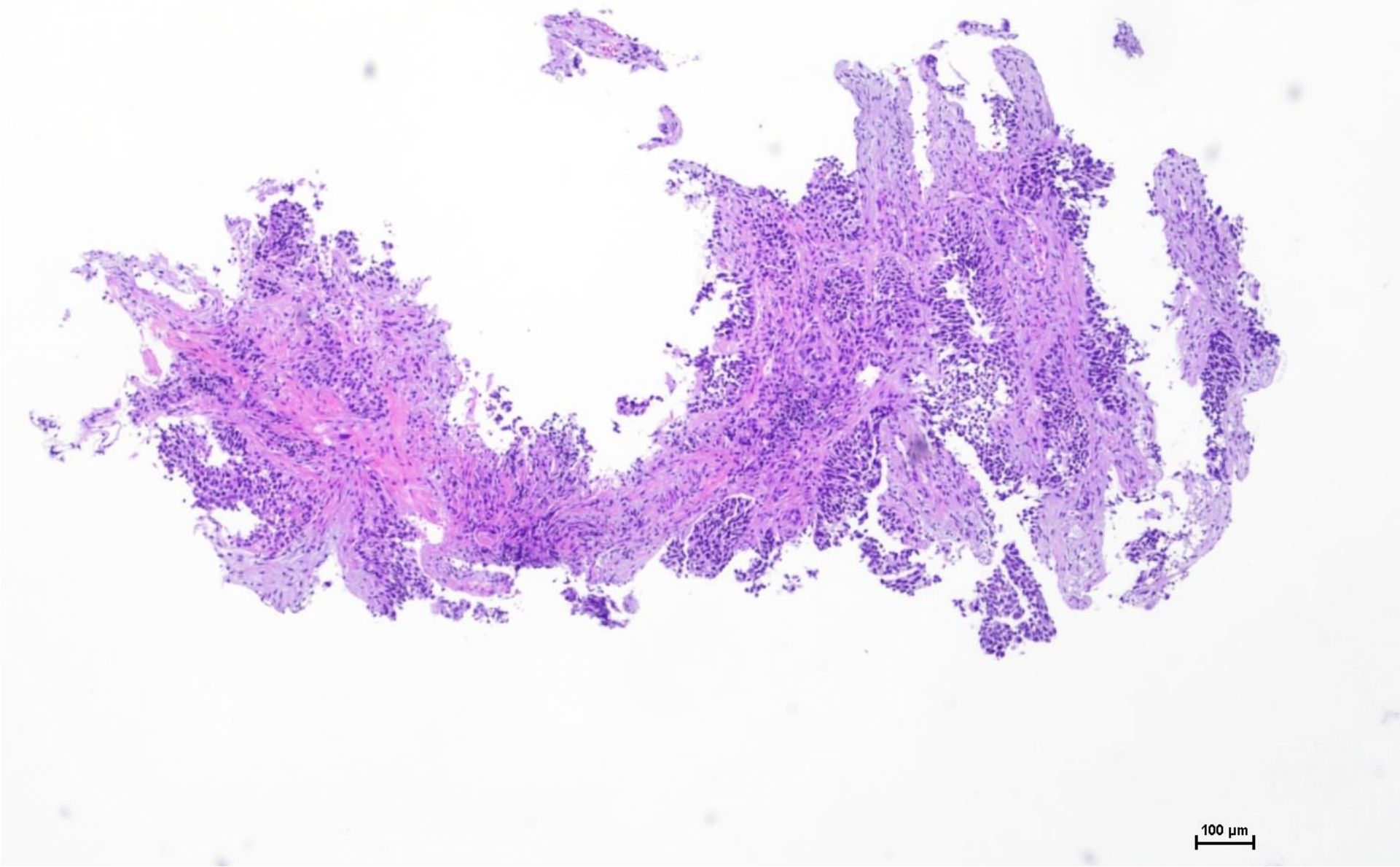
# 細胞判定

陽性

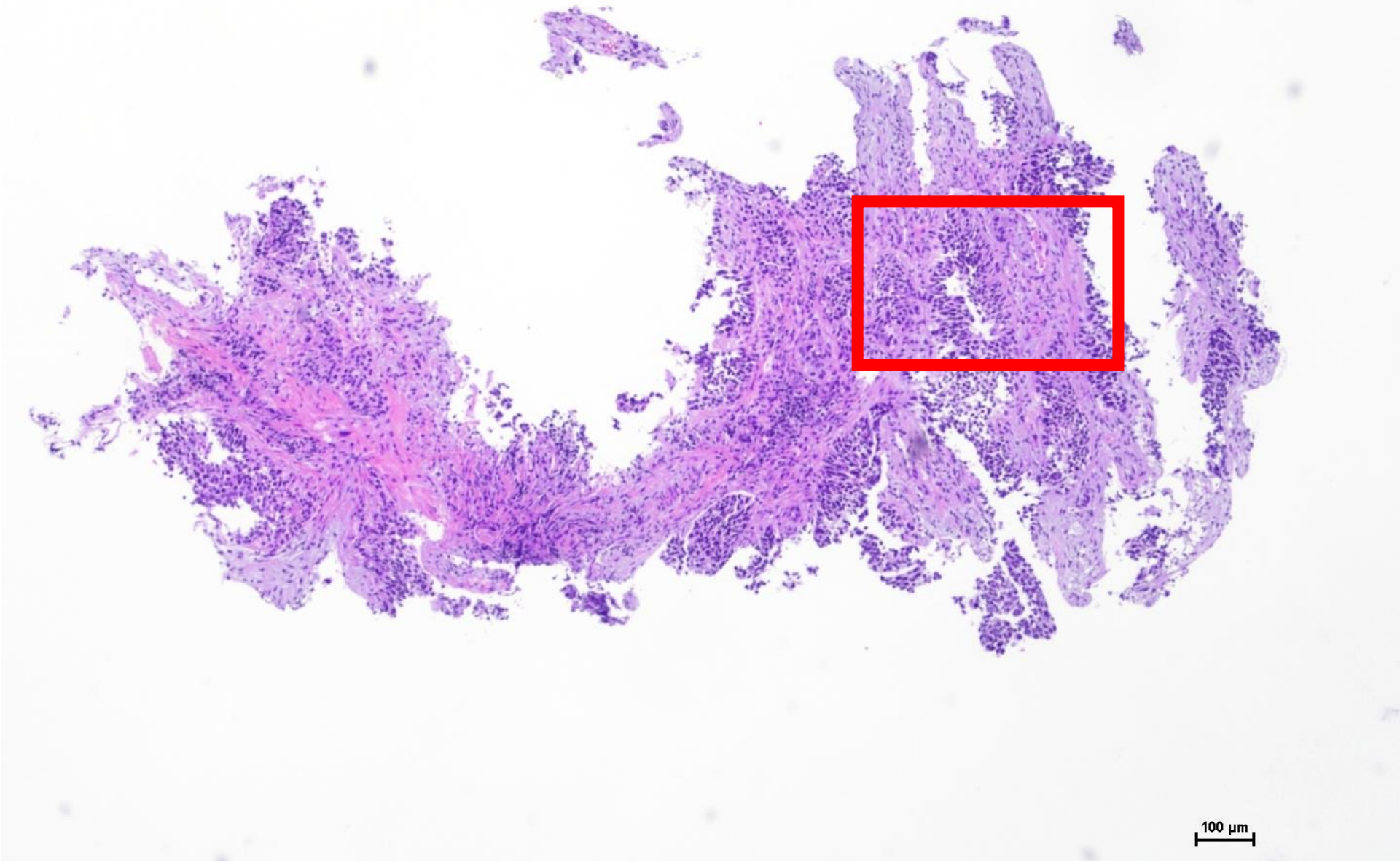
Carcinoma,

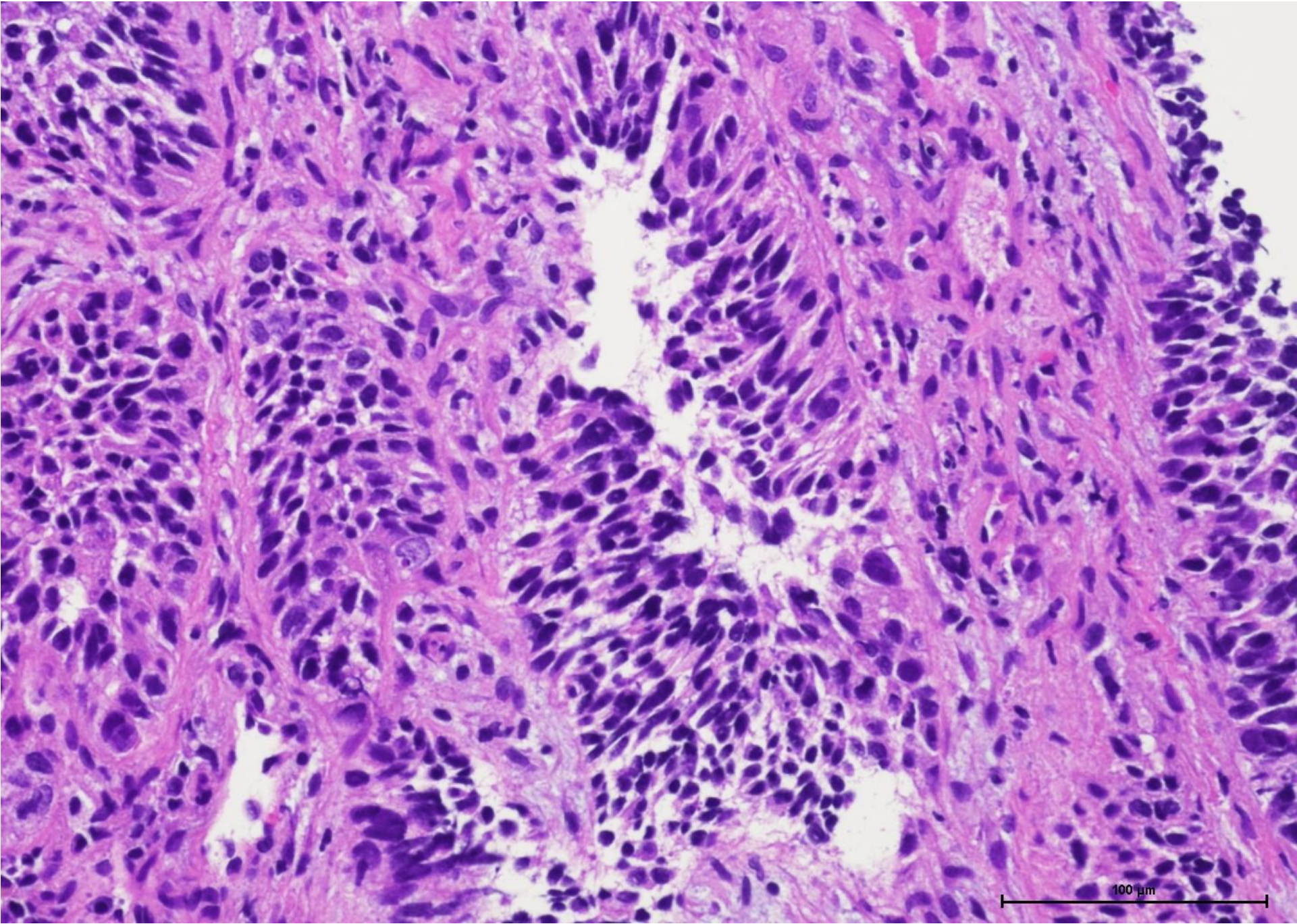
suspect of adenocarcinoma

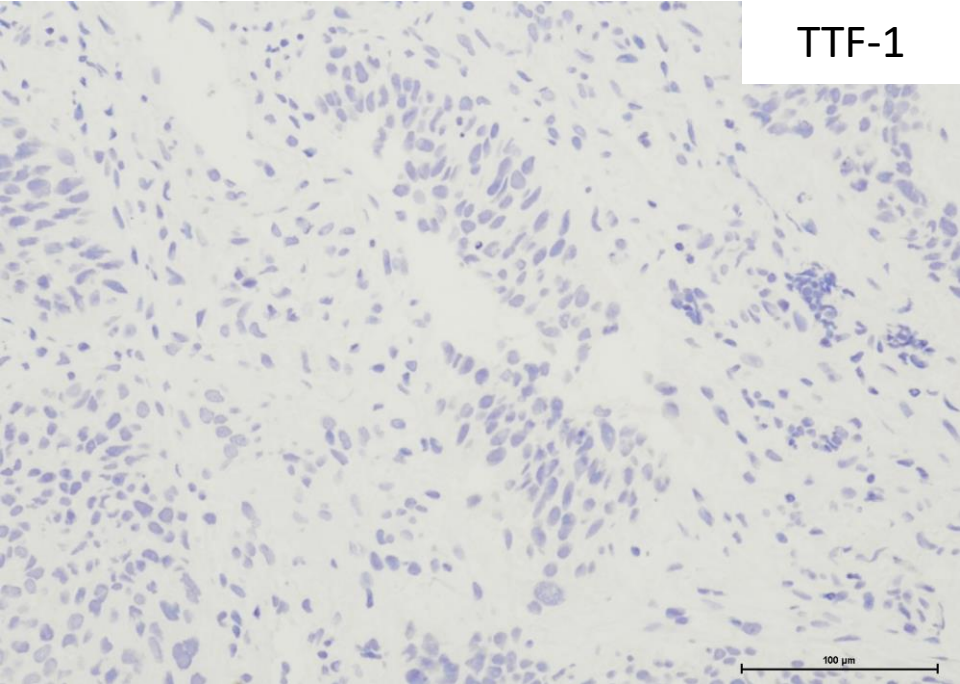
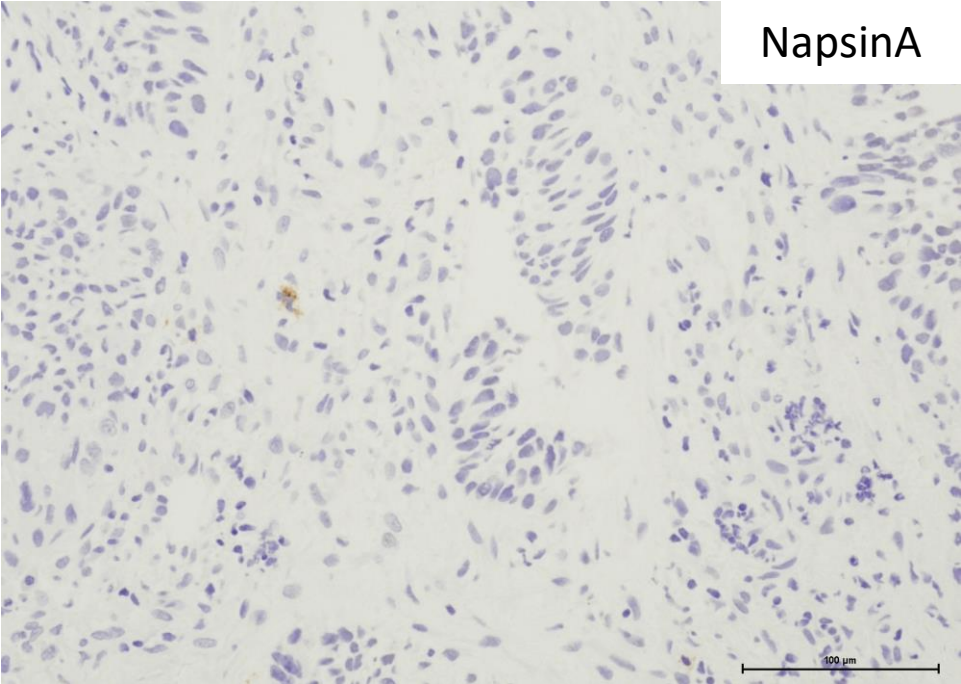
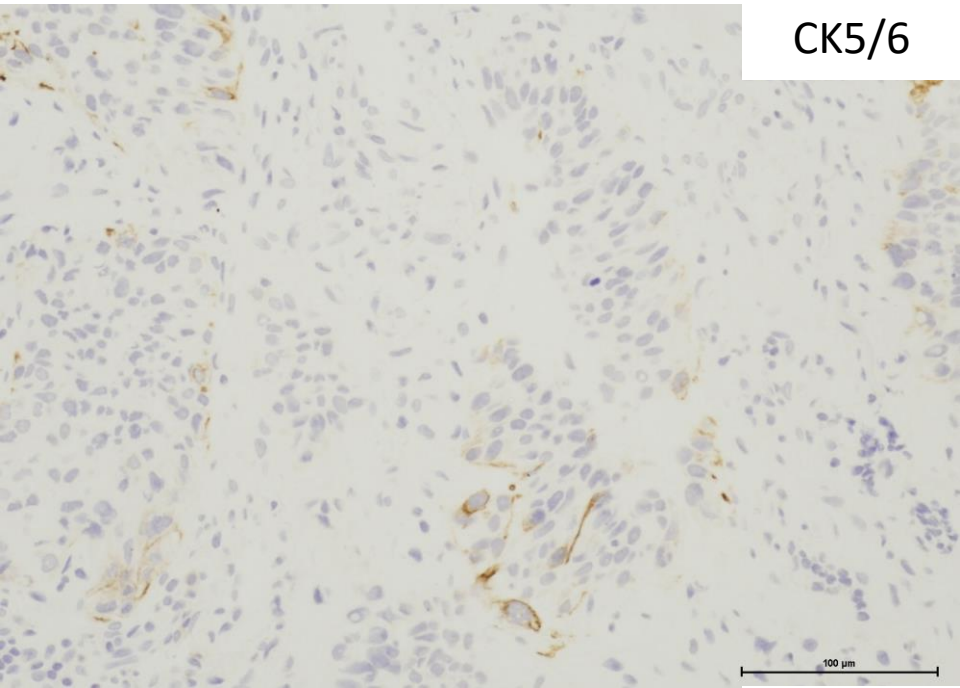
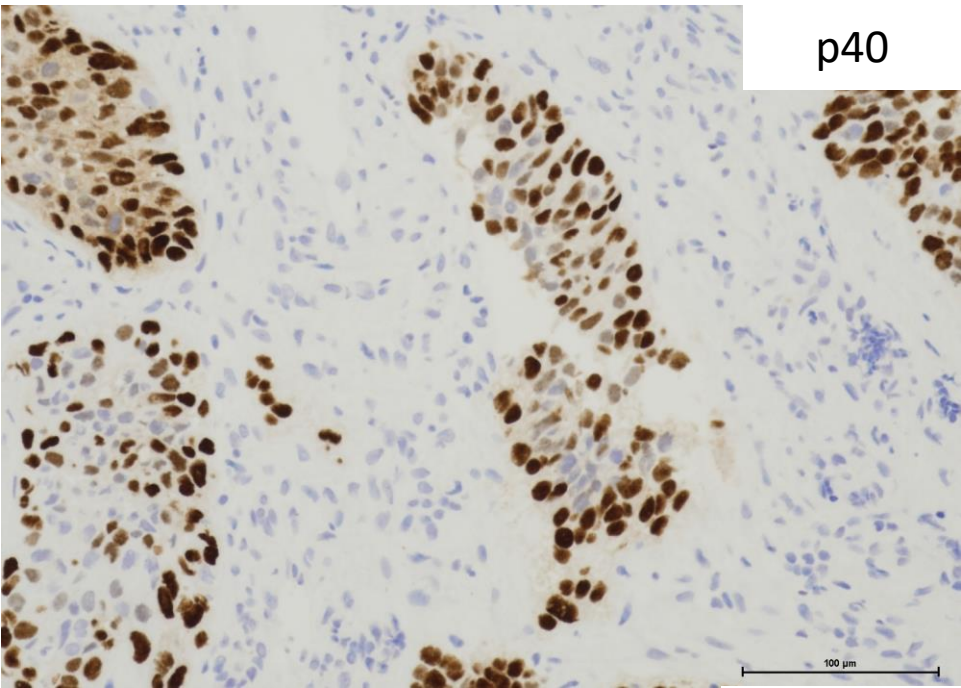
組織生検：TBLB



組織生検：TBLB







# 組織診断

Squamous cell carcinoma