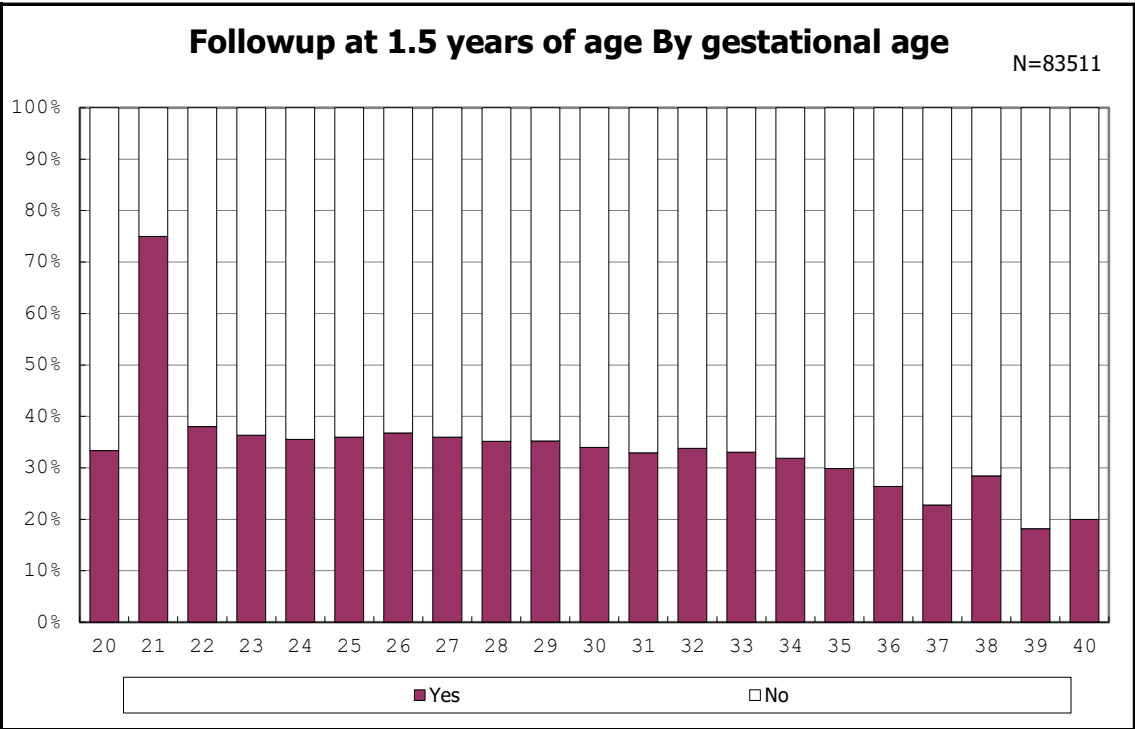
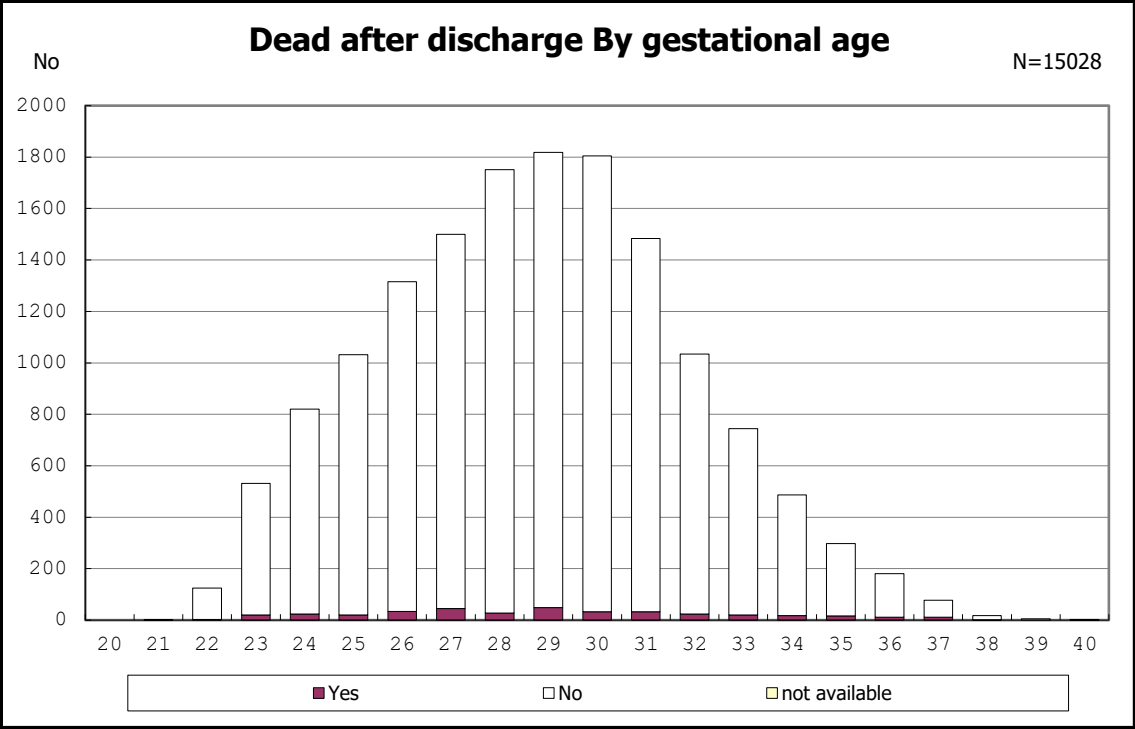




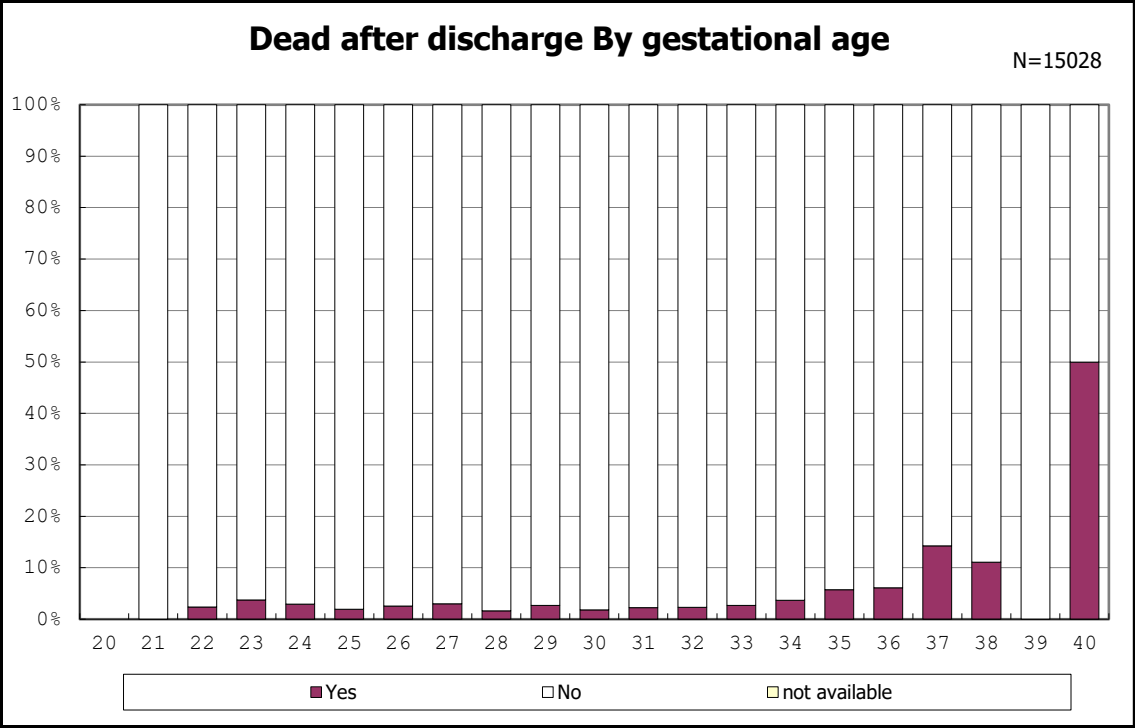
among infants with alive at discharge



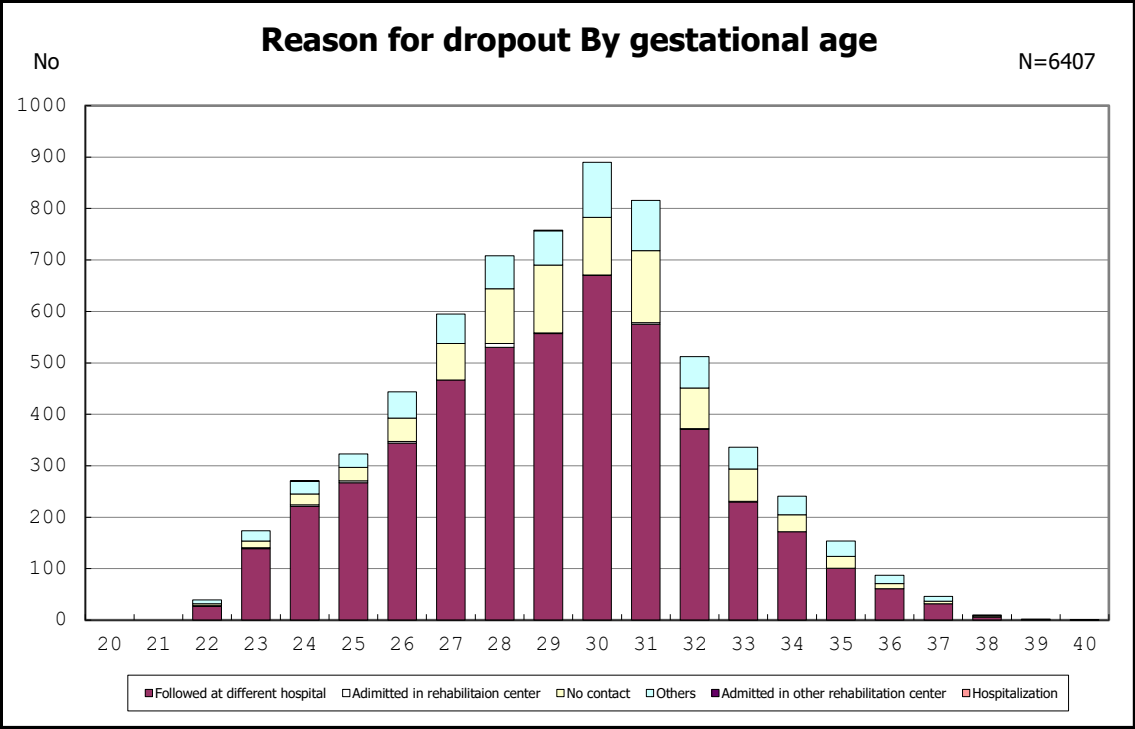
among infants with alive at discharge



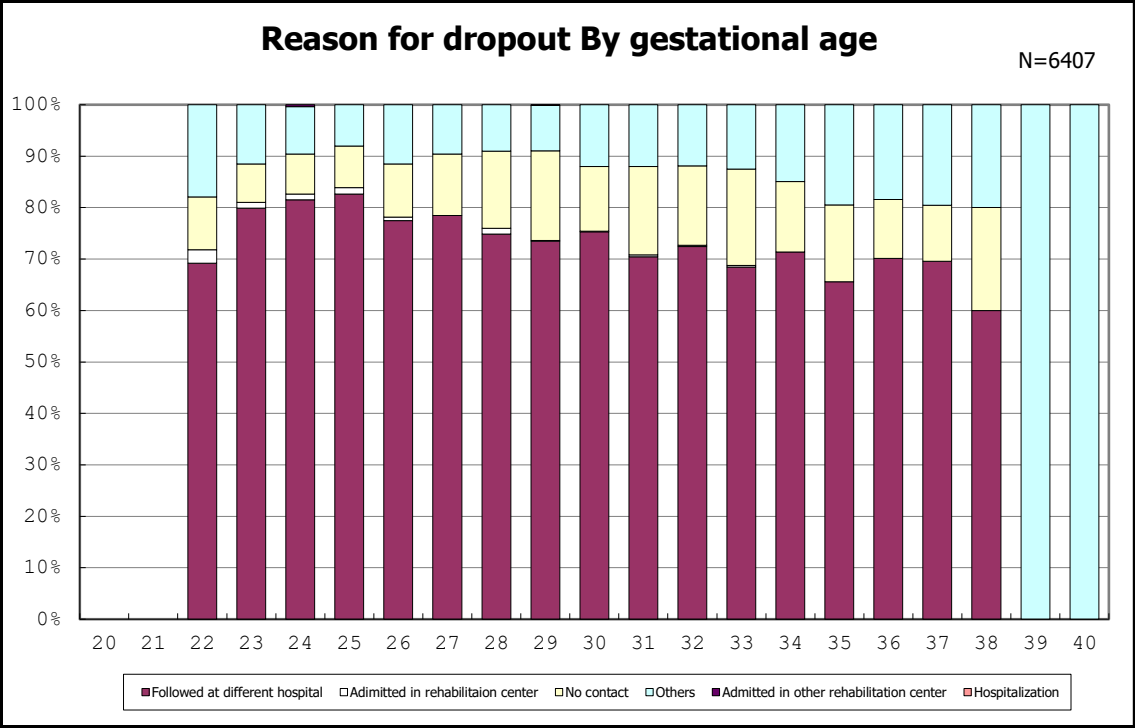
among infants with alive at discharge



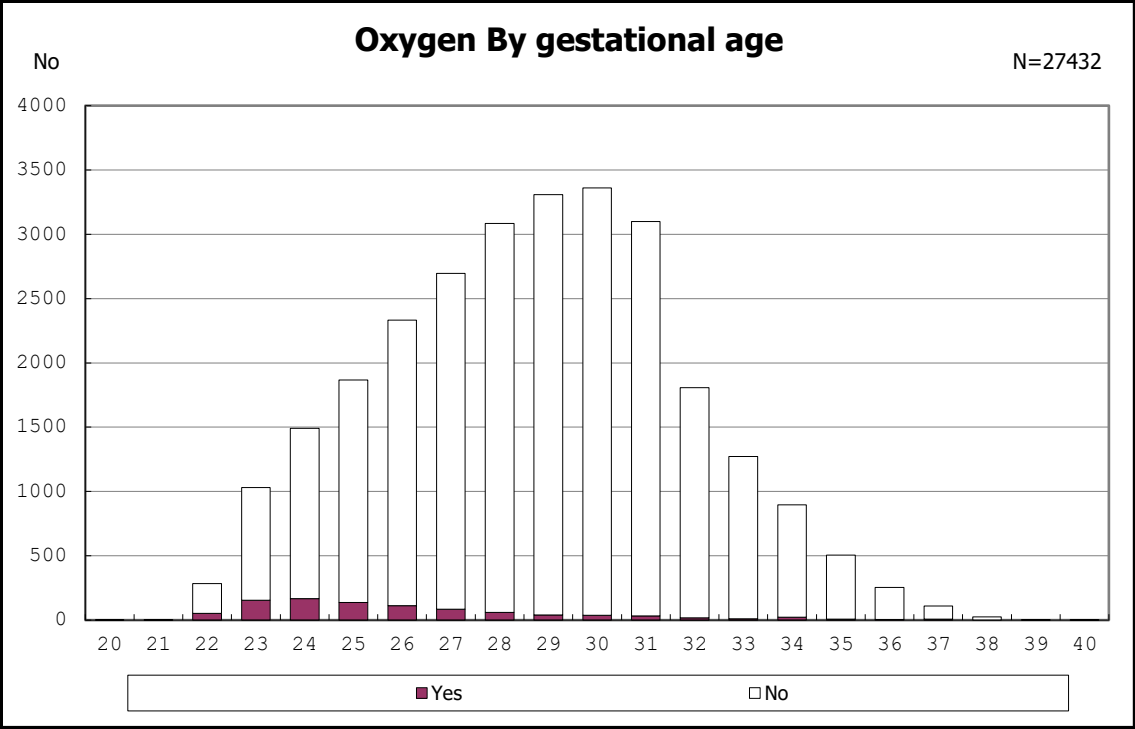
among infants with alive at discharge



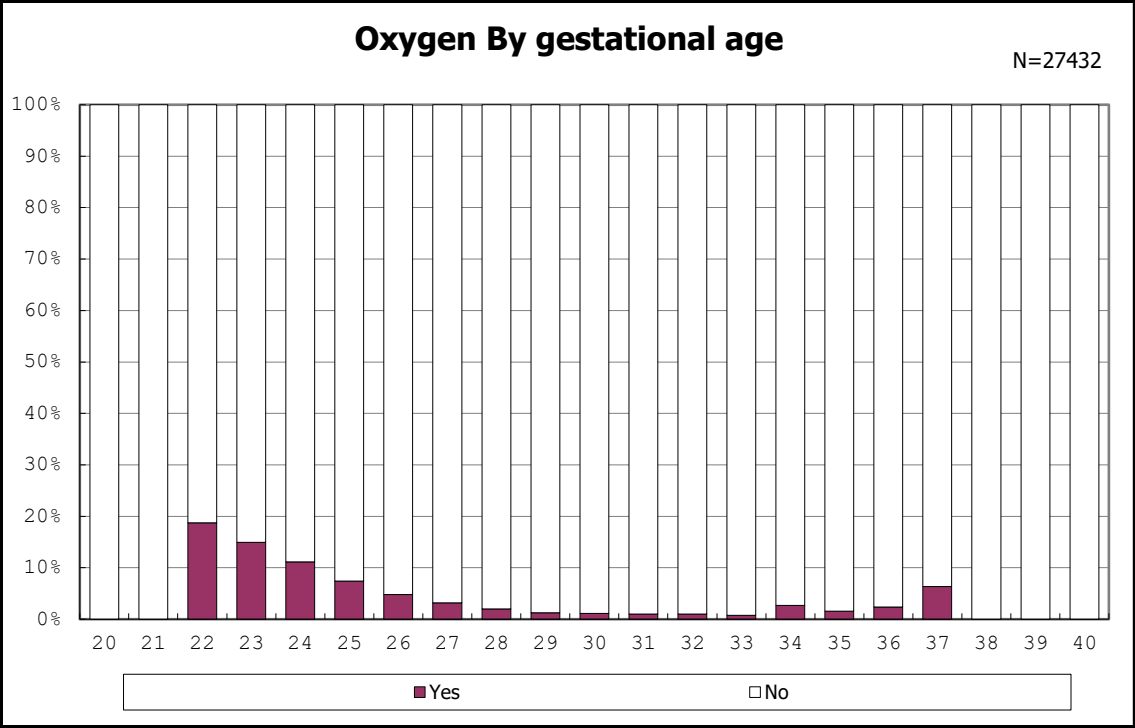
among infants with alive at discharge



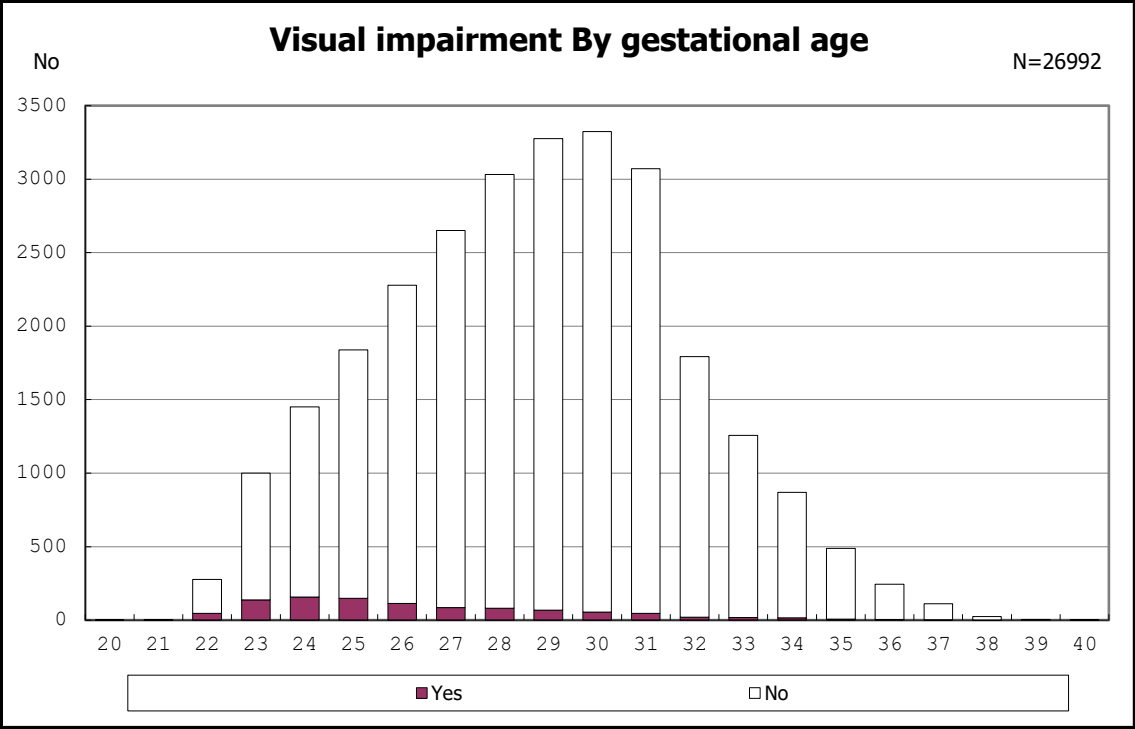
among infants with alive at discharge



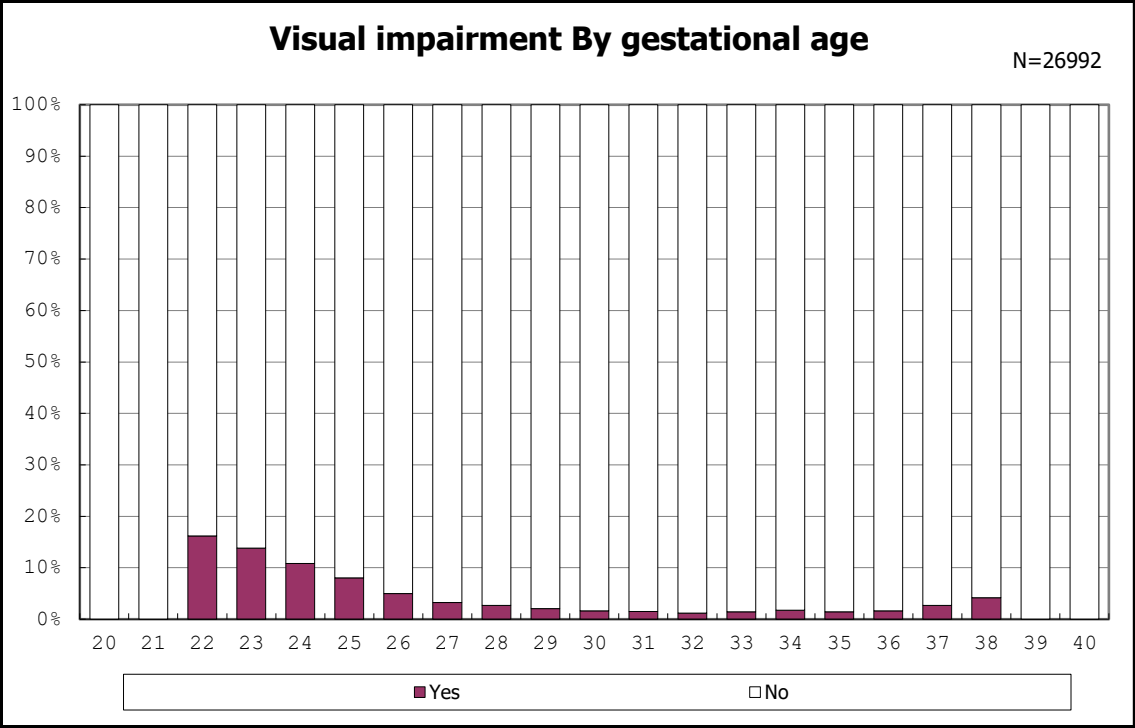
among infants with followup at 1.5 years of age



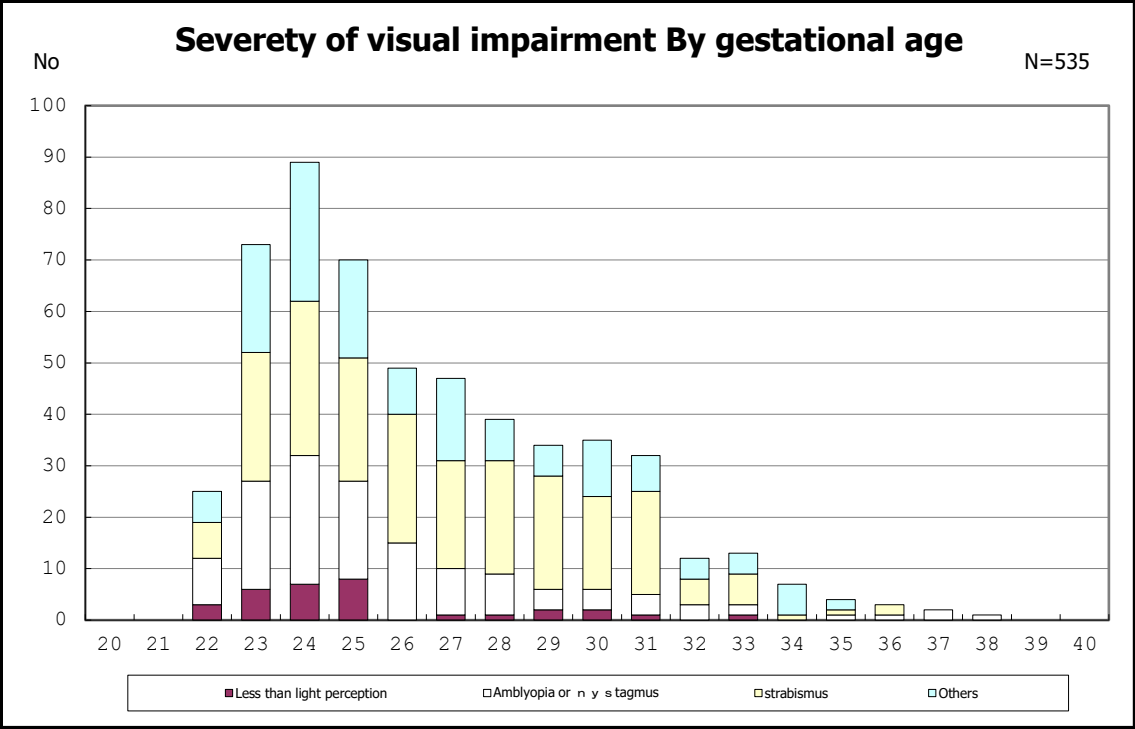
among infants with followup at 1.5 years of age



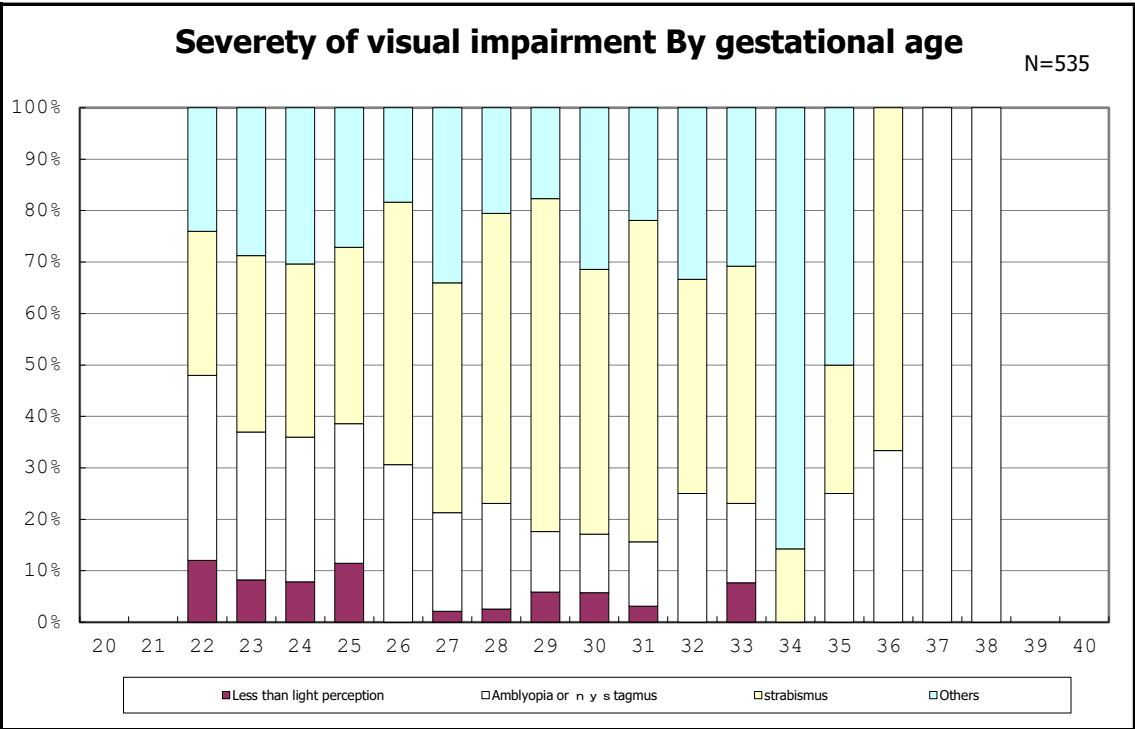
among infants with followup at 1.5 years of age



among infants with followup at 1.5 years of age



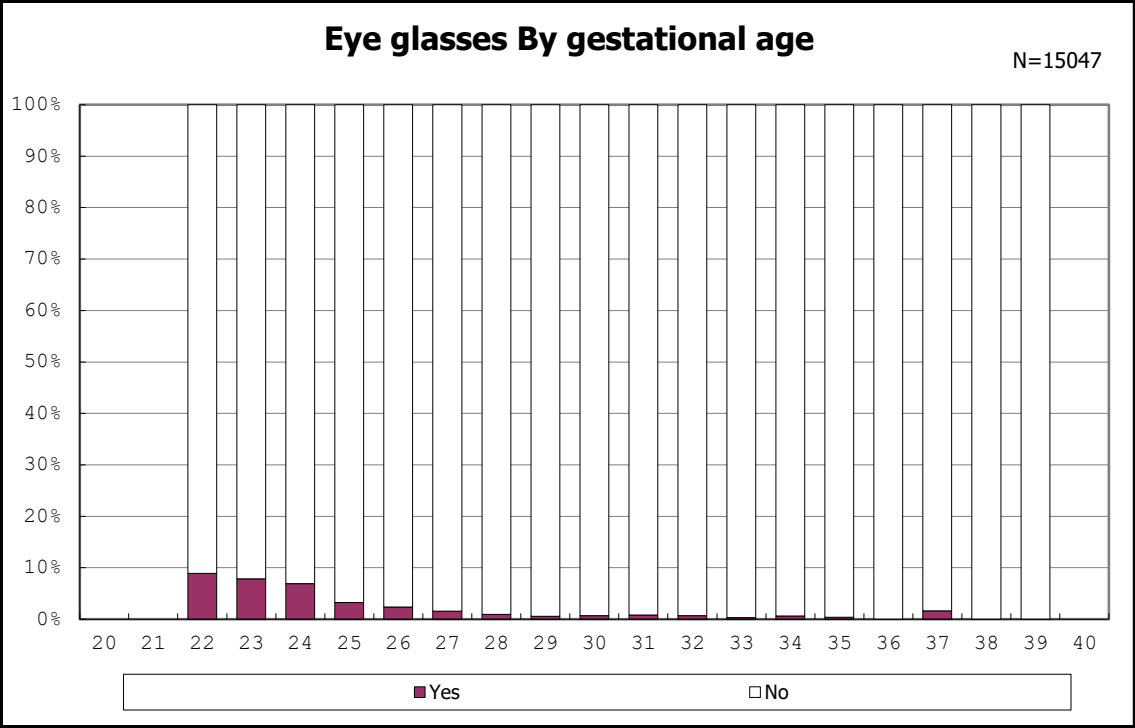
among infants with visual impairment



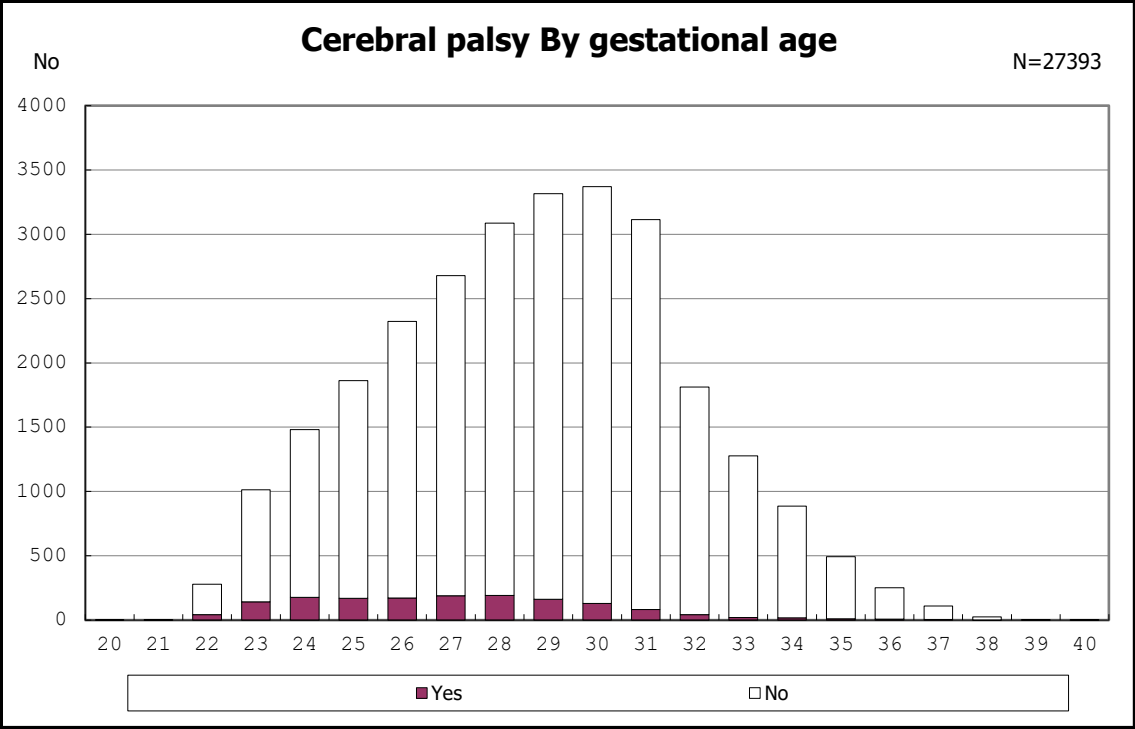
among infants with visual impairment



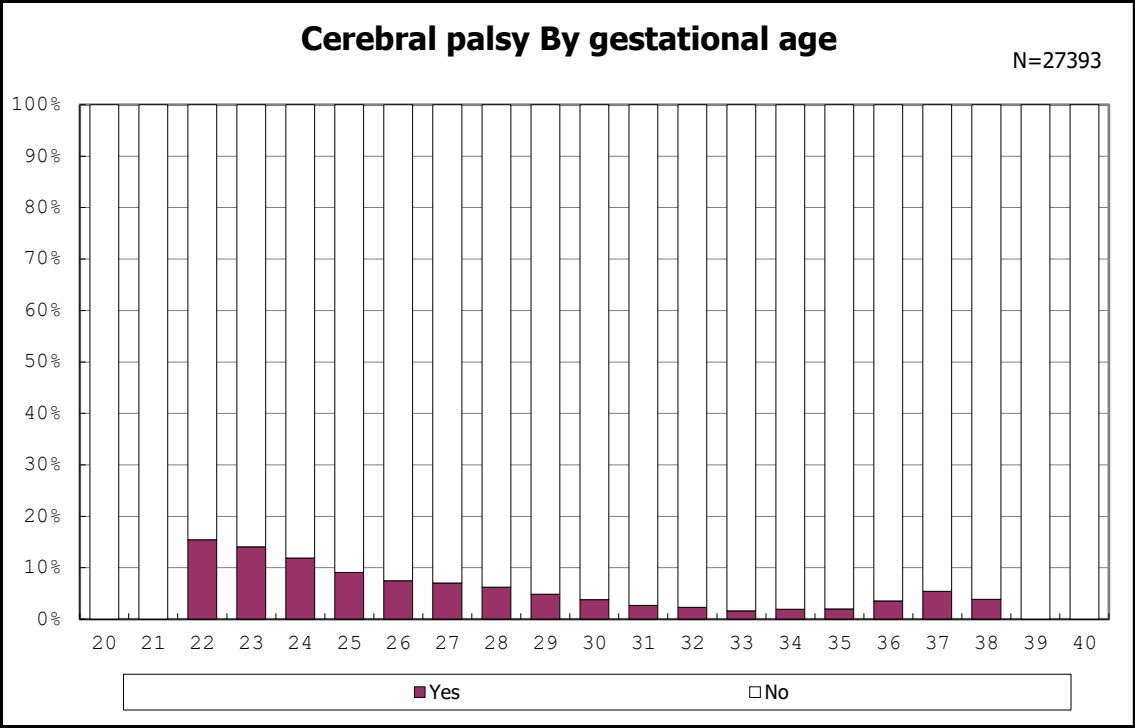
among infants with followup at 1.5 years of age



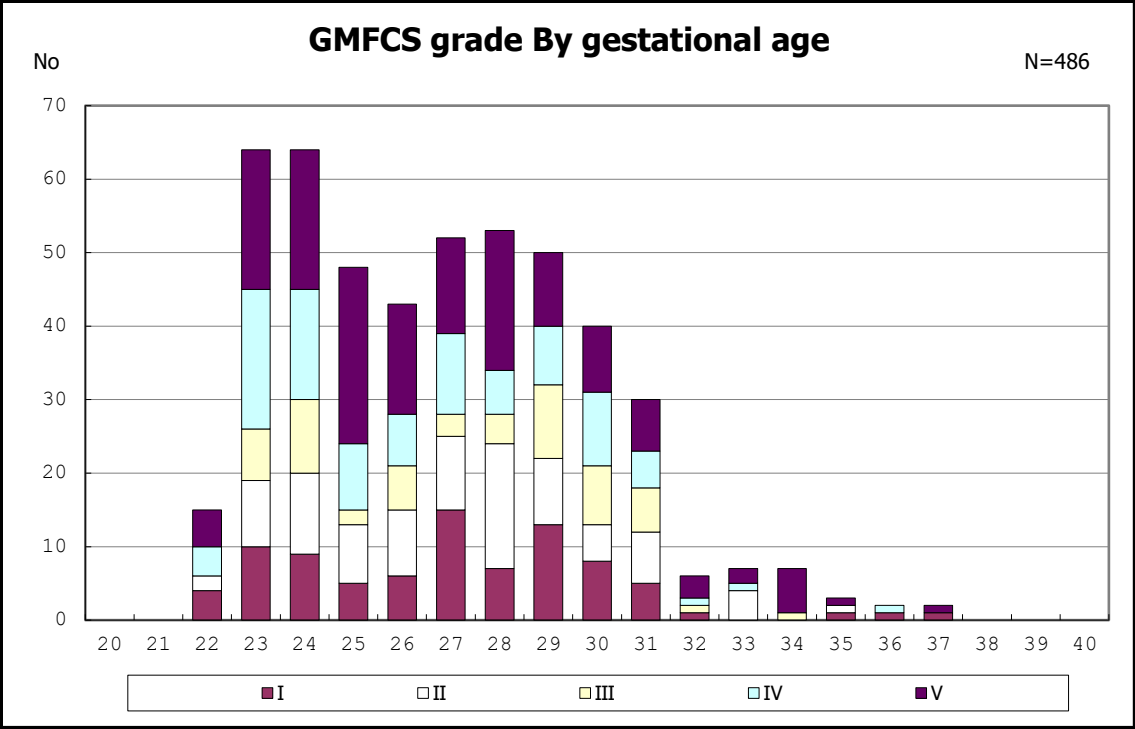
among infants with followup at 1.5 years of age



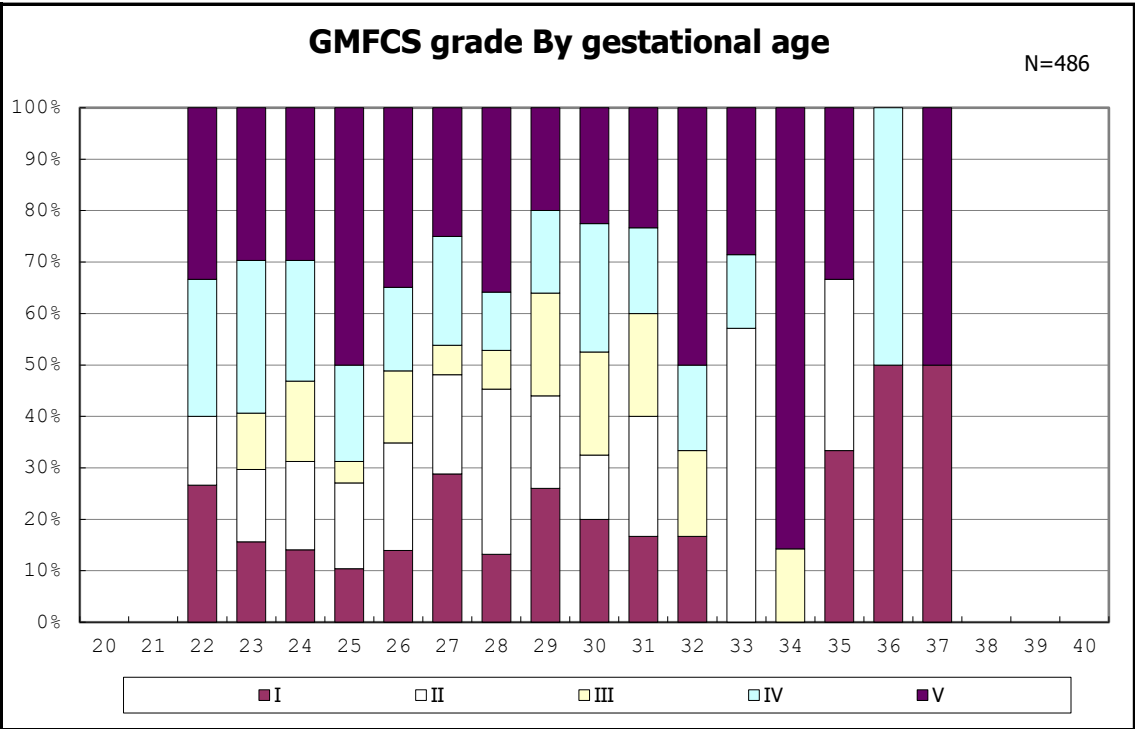
among infants with followup at 1.5 years of age



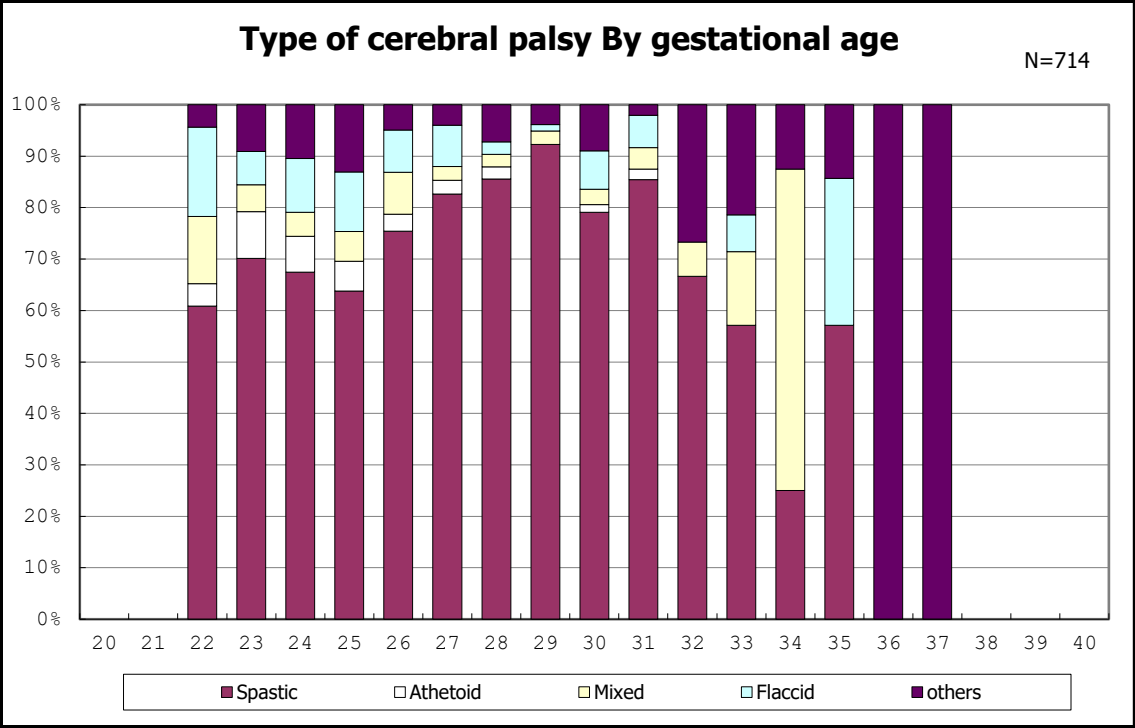
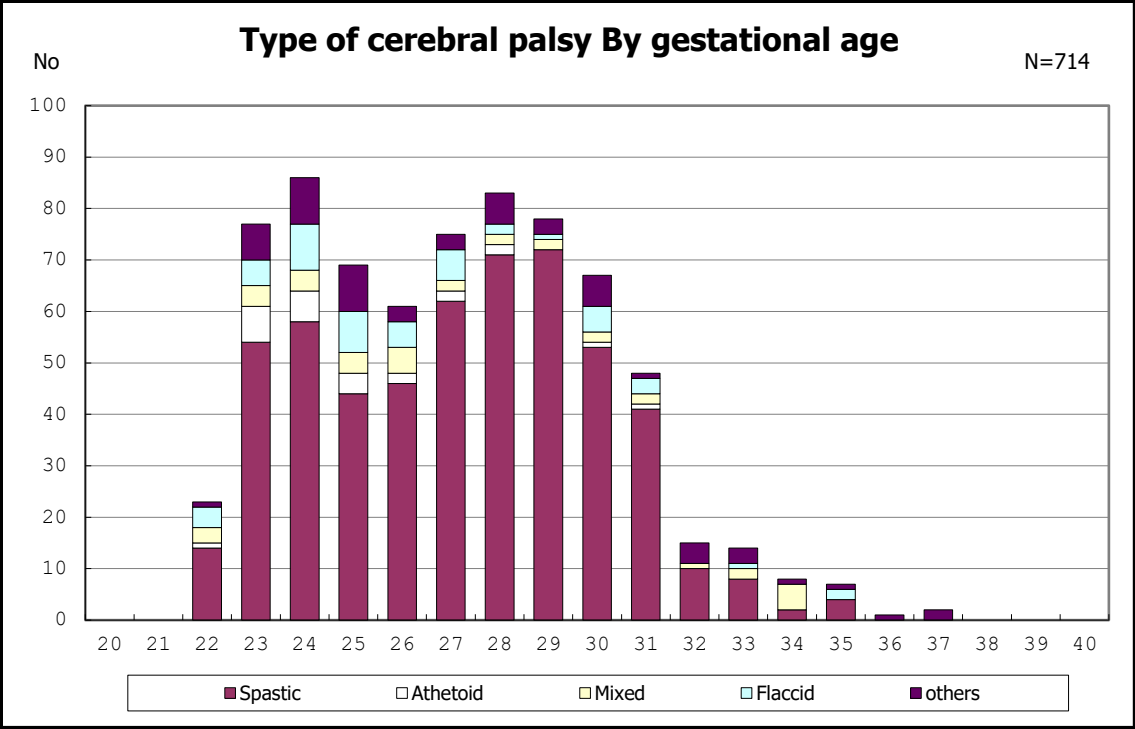
among infants with followup at 1.5 years of age

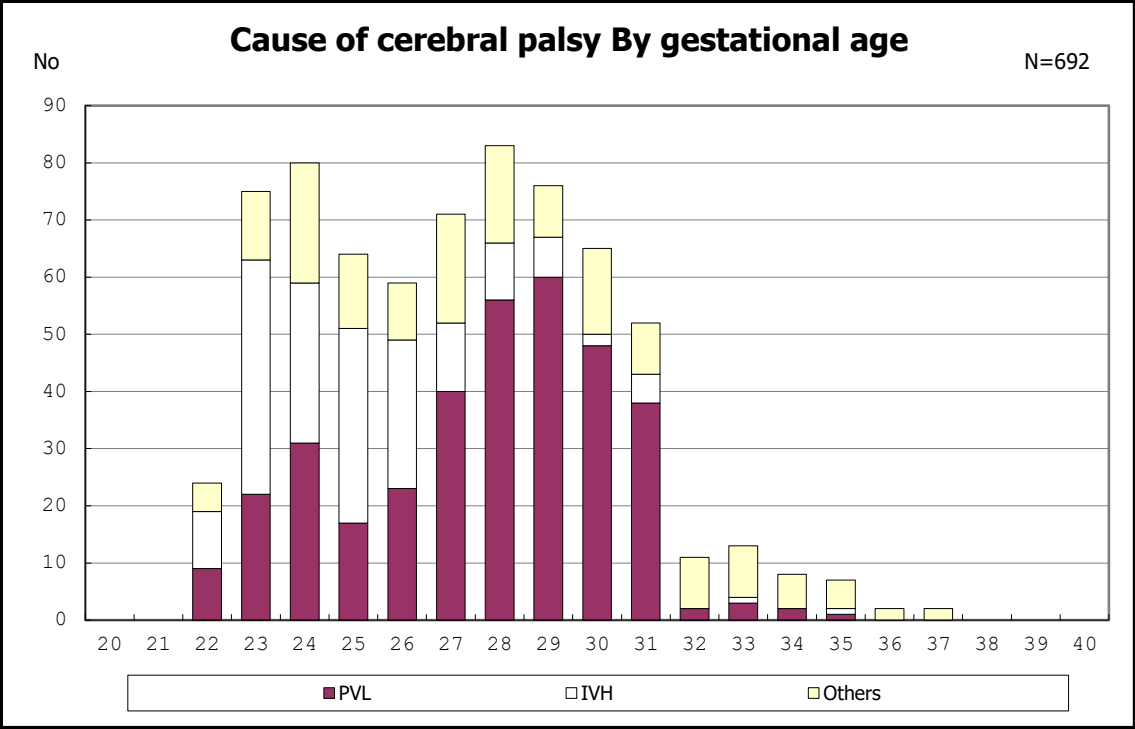


among infants with cerebral palsy

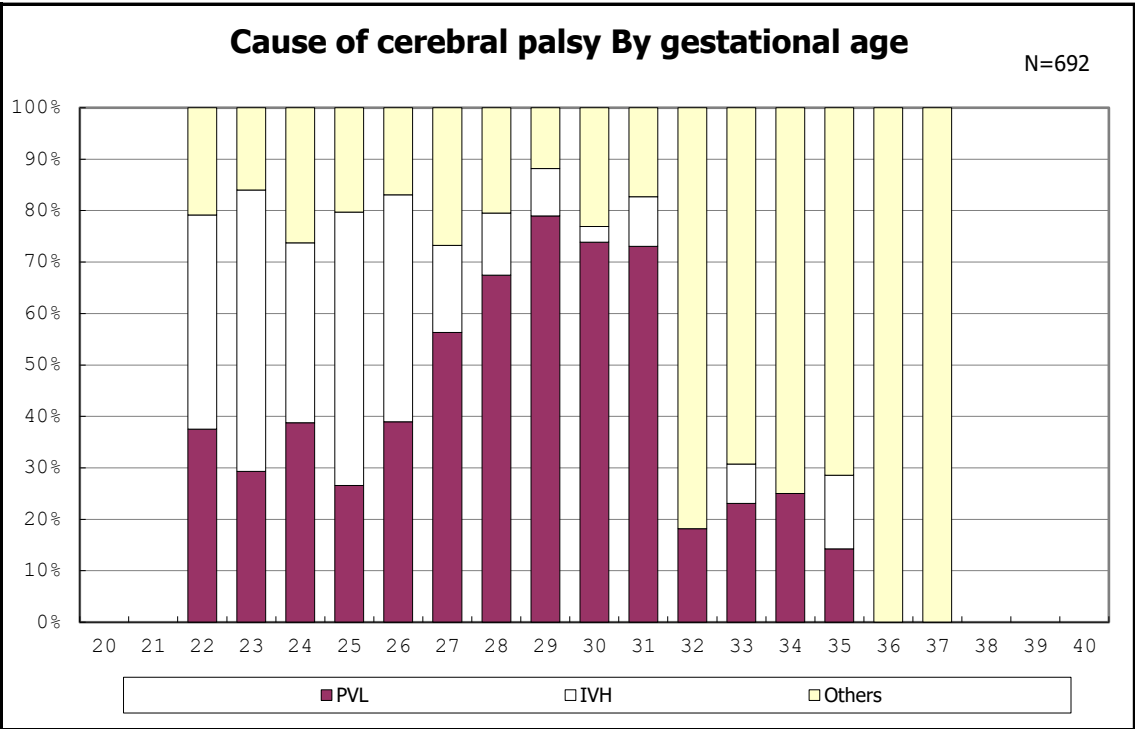


among infants with cerebral palsy

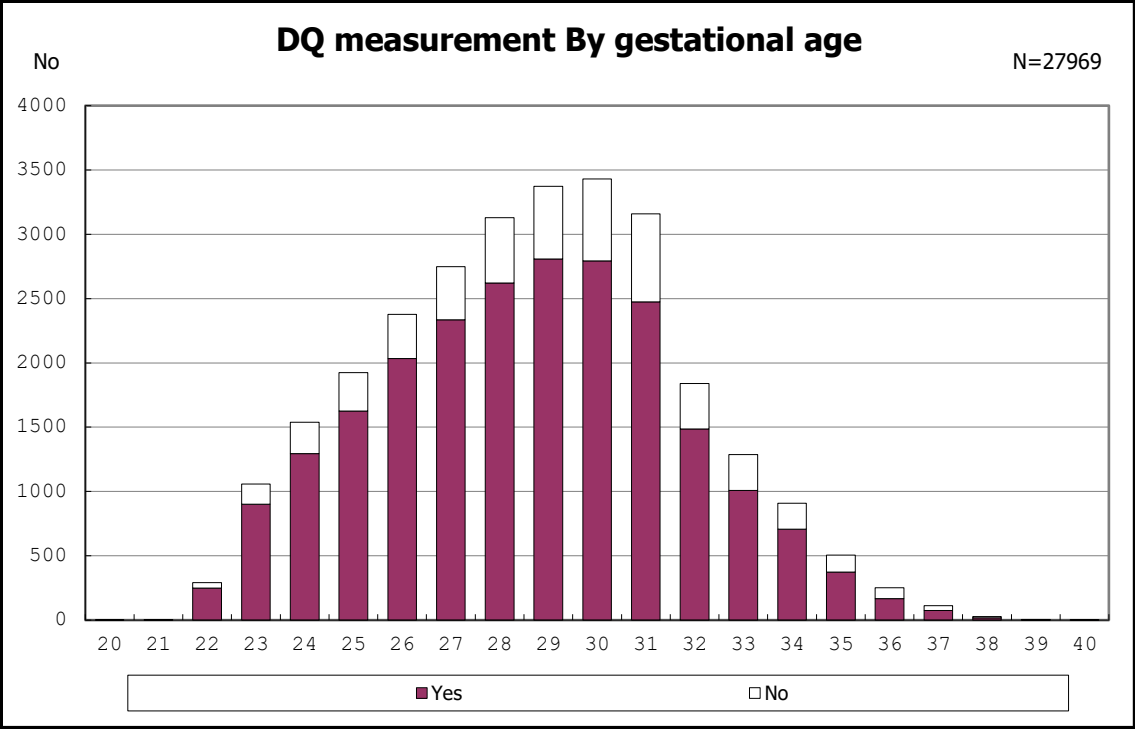




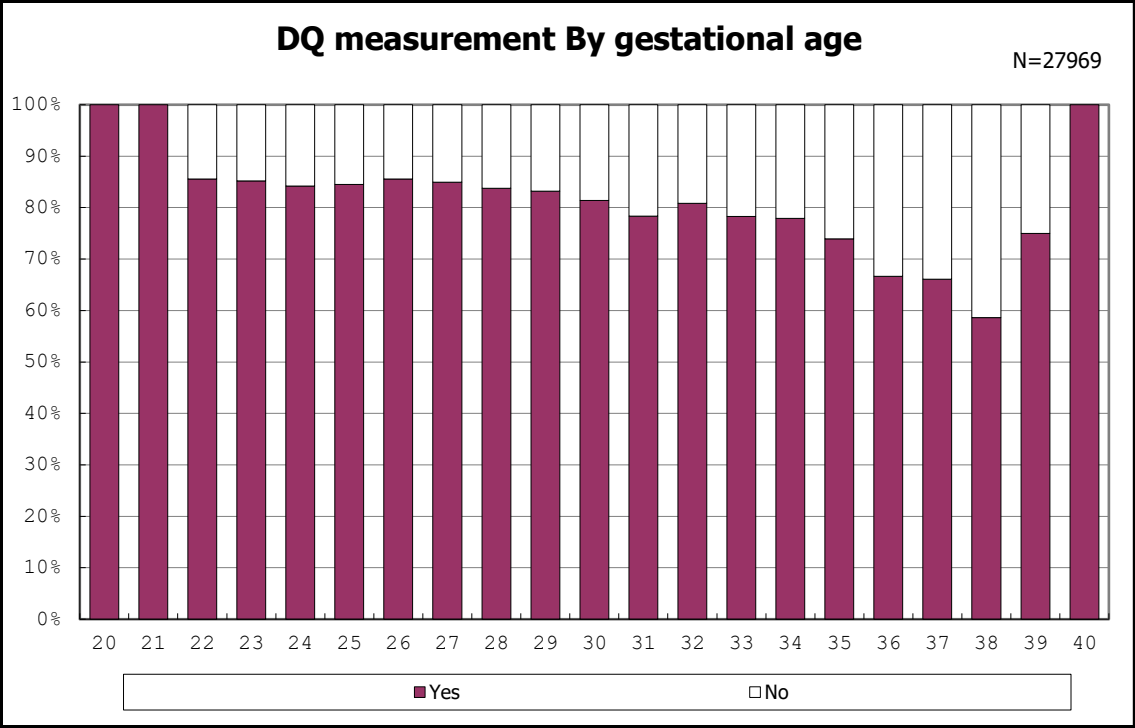
among infants with cerebral palsy



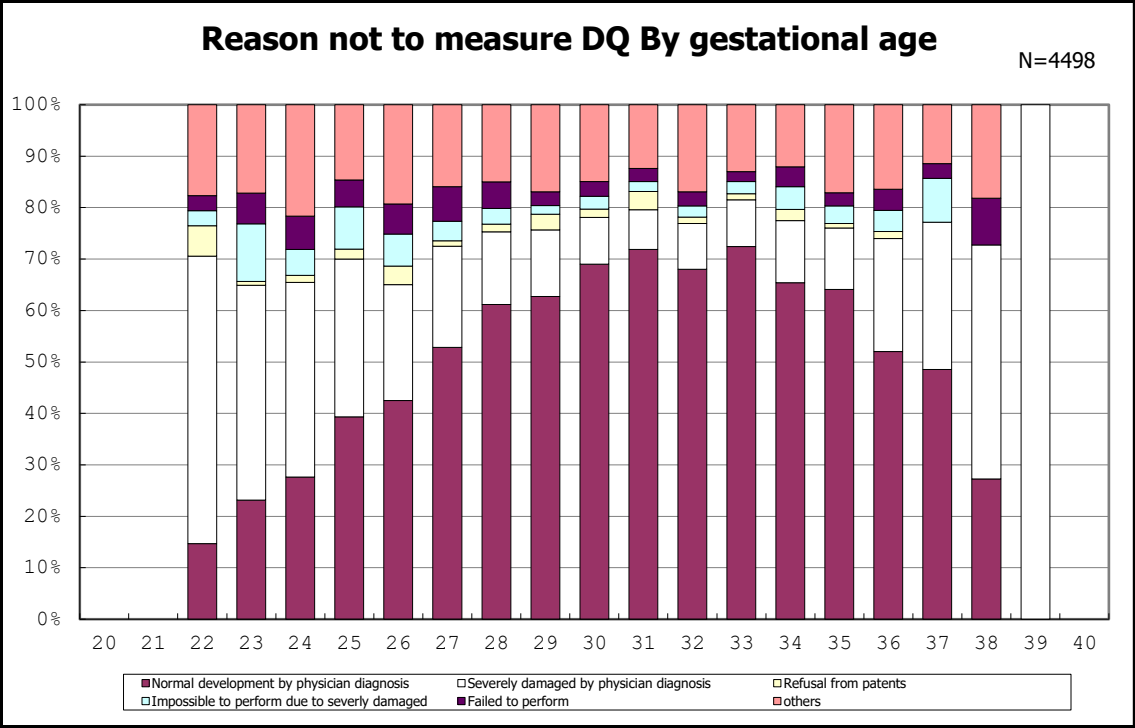
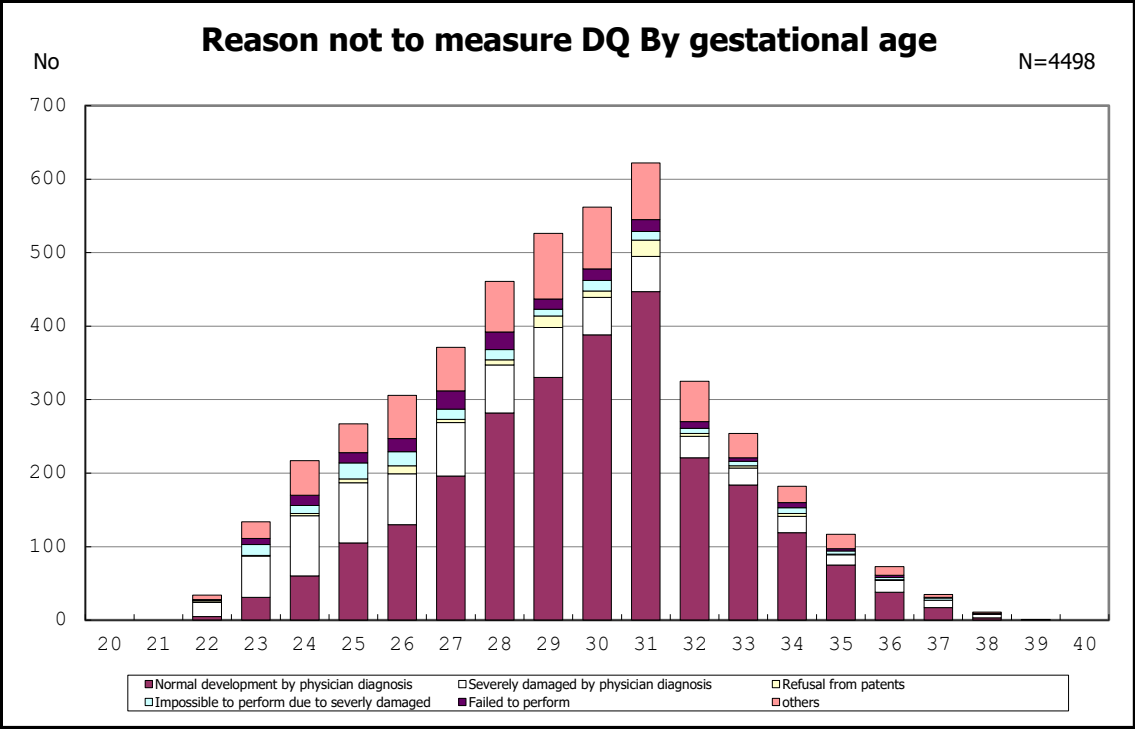
among infants with cerebral palsy

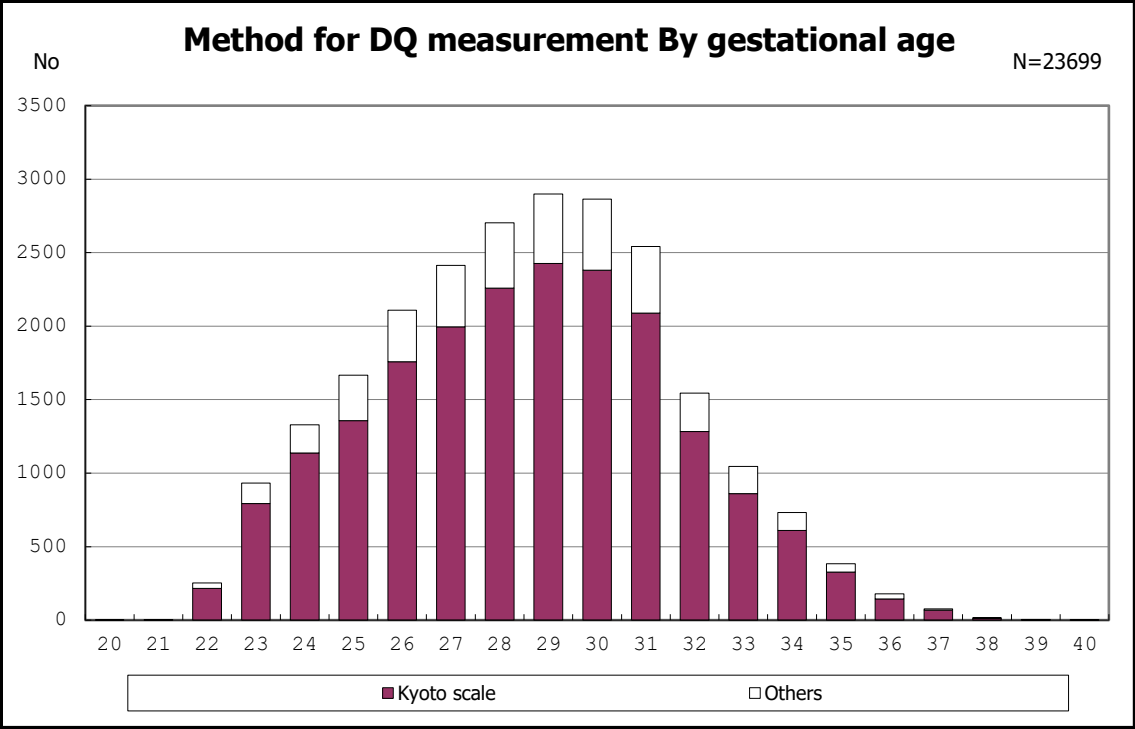


among infants with followup at 1.5 years of age

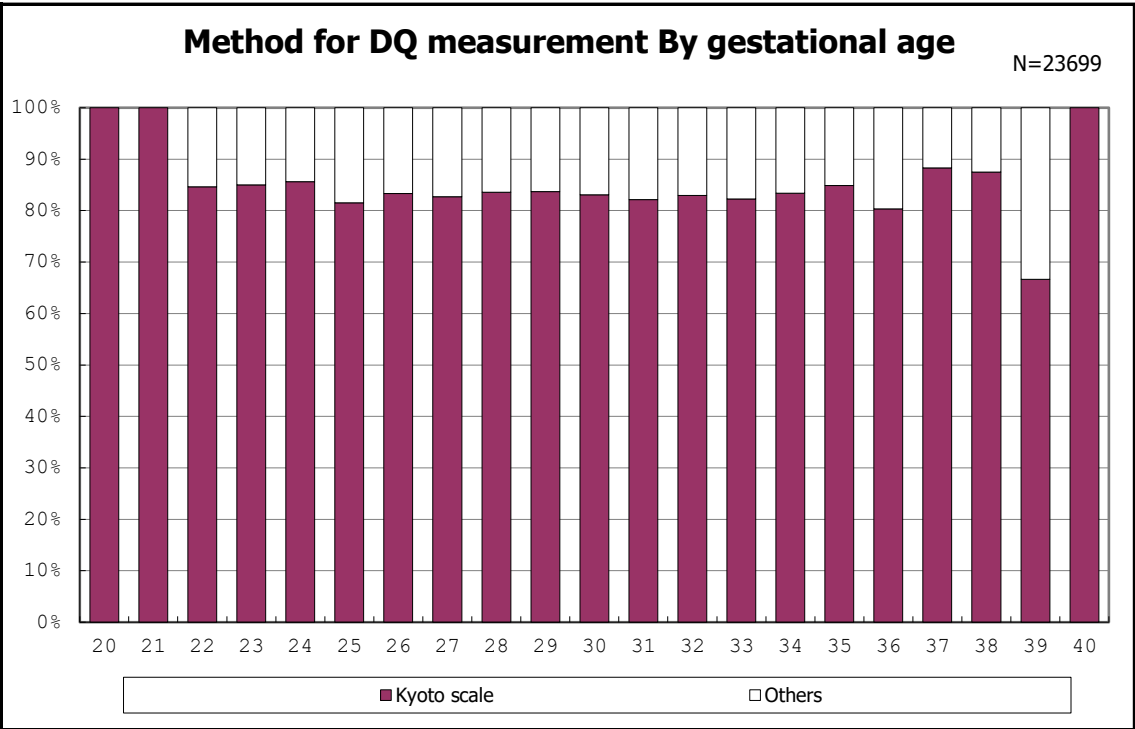


among infants with followup at 1.5 years of age

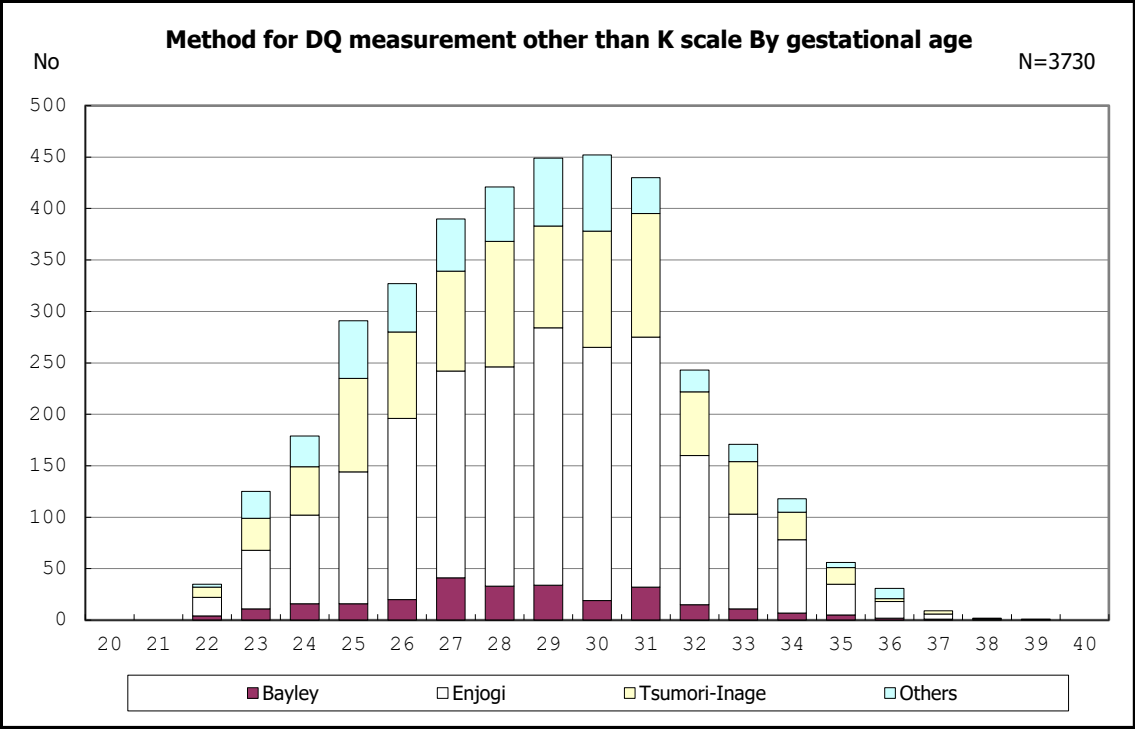




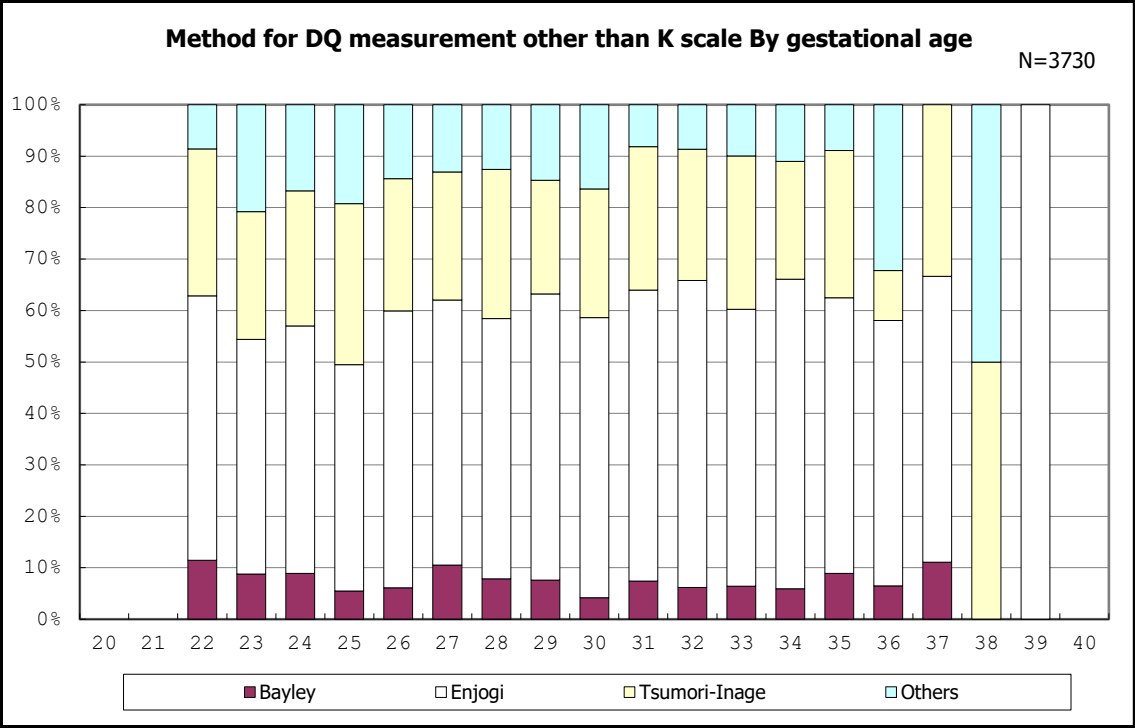
among infants with followup at 1.5 years of age



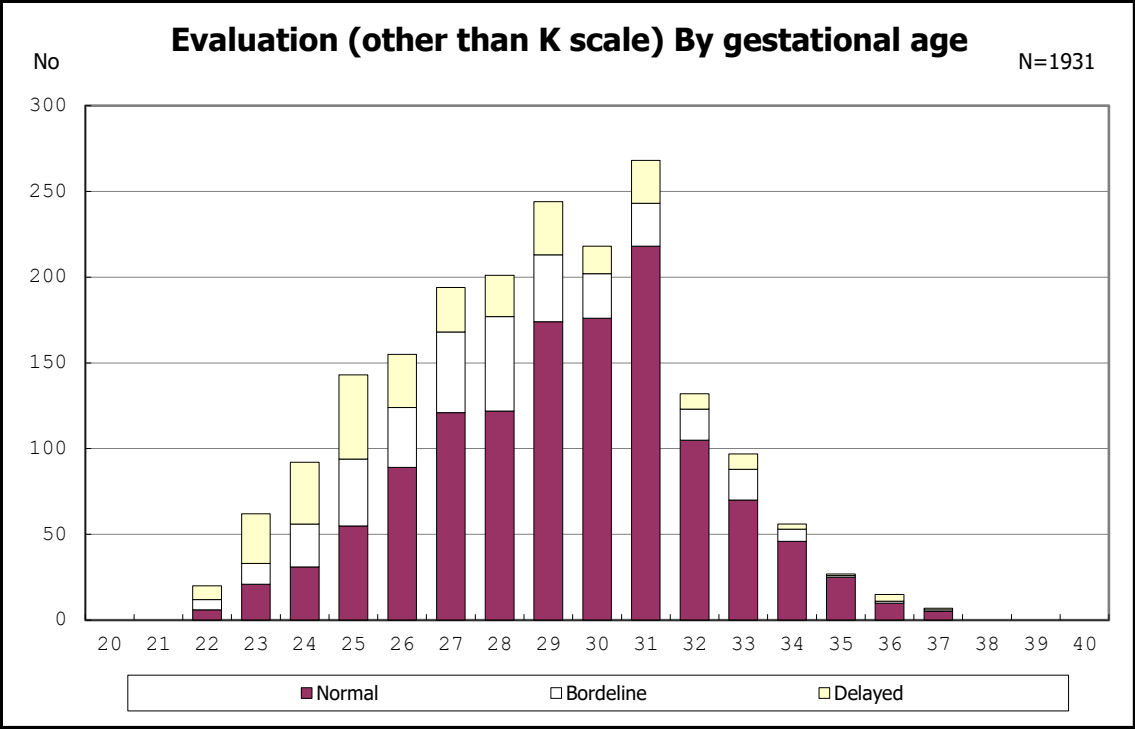
among infants with followup at 1.5 years of age



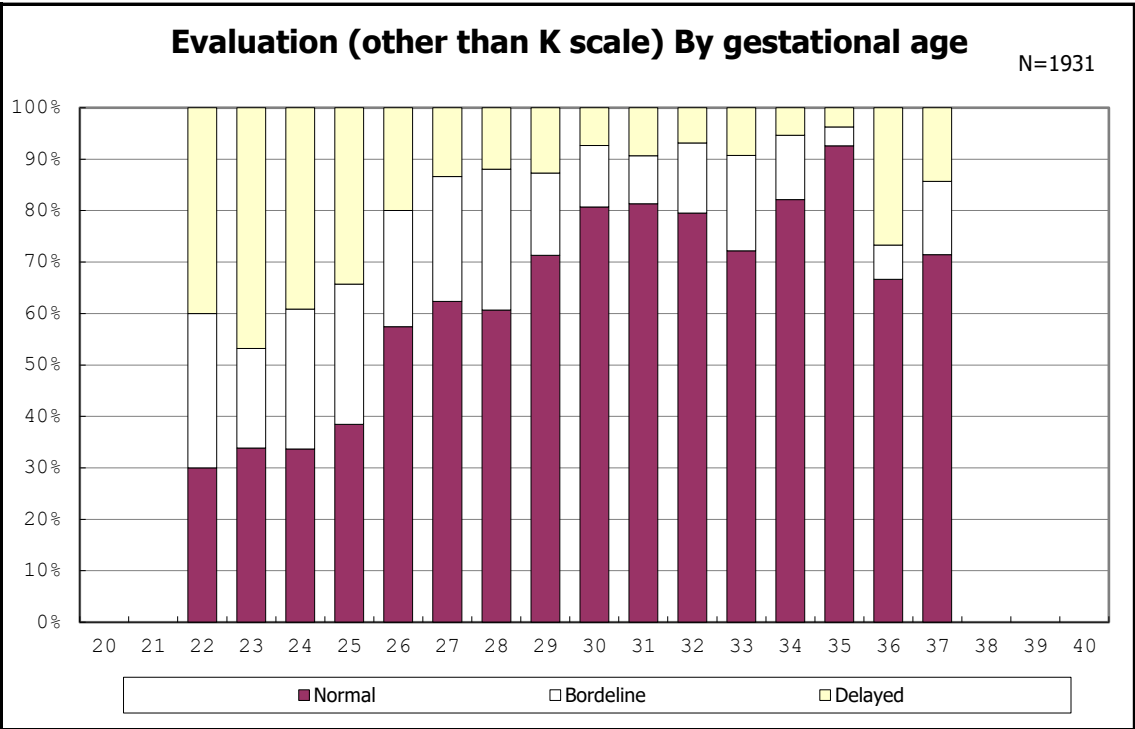
among infants with DQ measured by other than K scale



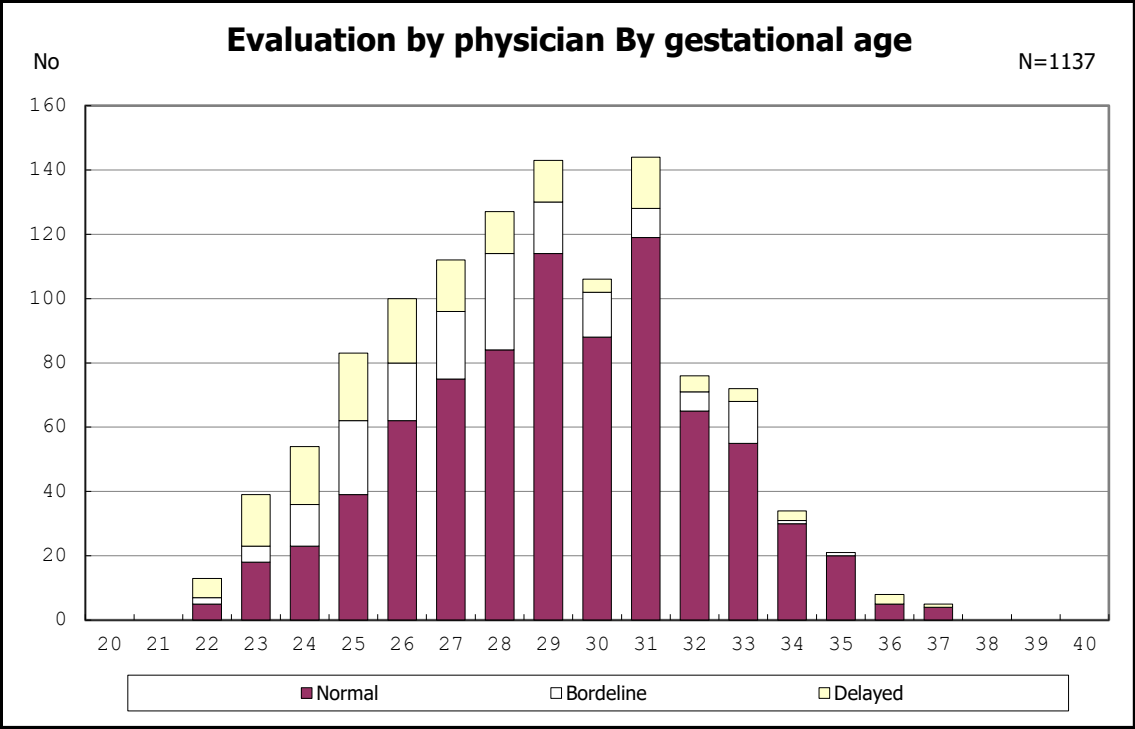
among infants with DQ measured by other than K scale



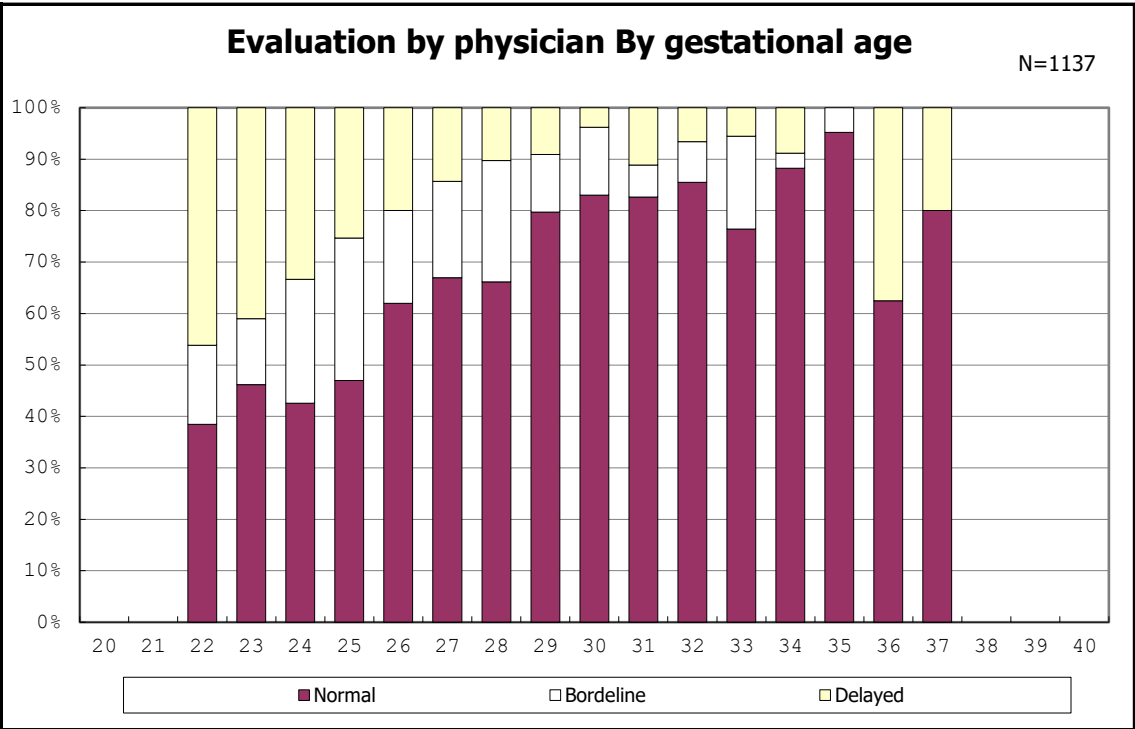
among infants with DQ measured by other than K scale



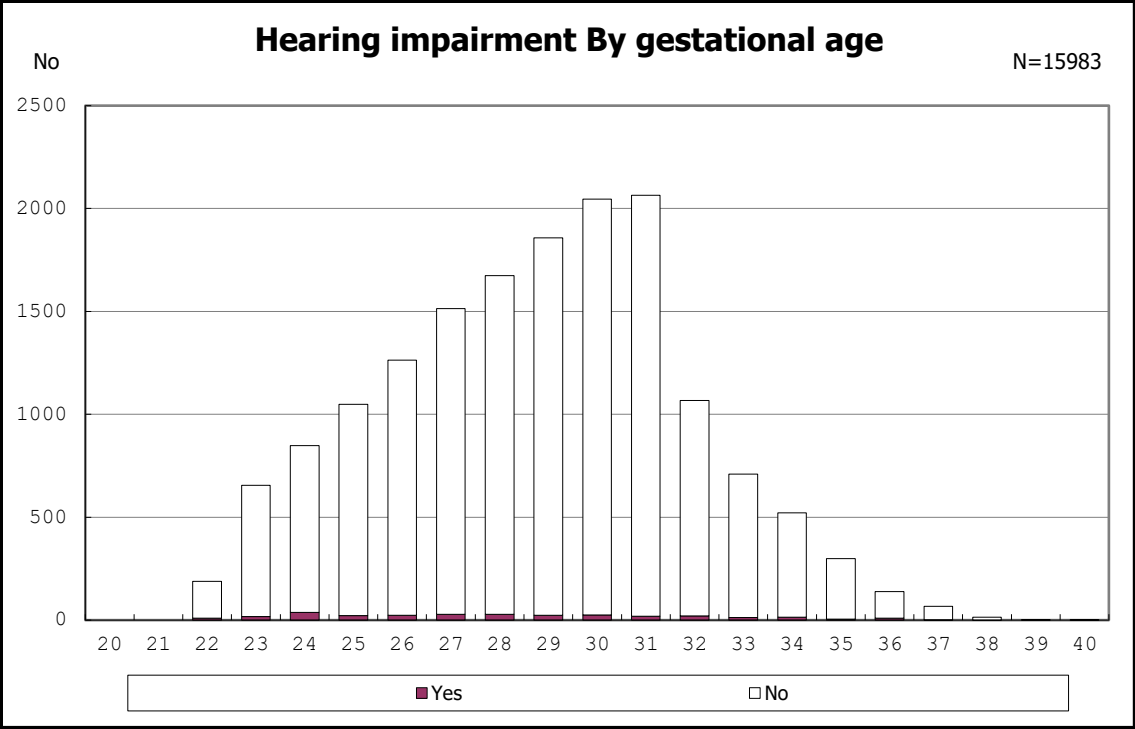
among infants with DQ measured by other than K scale



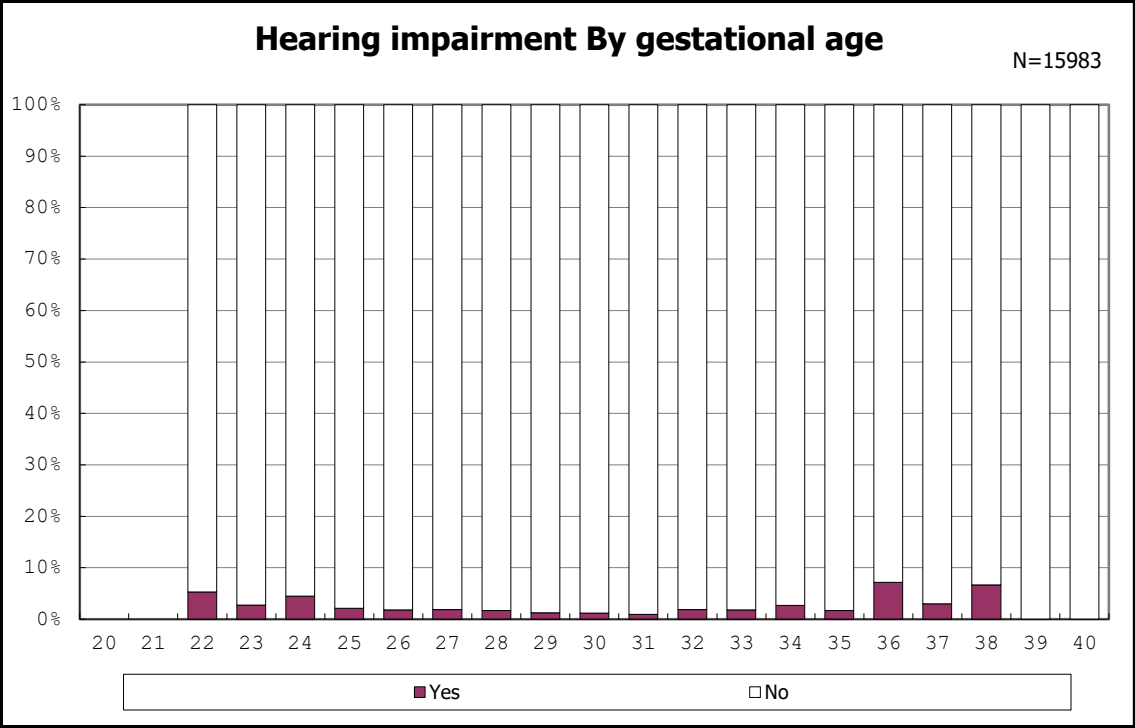
among infants with DQ measured by other than K scale



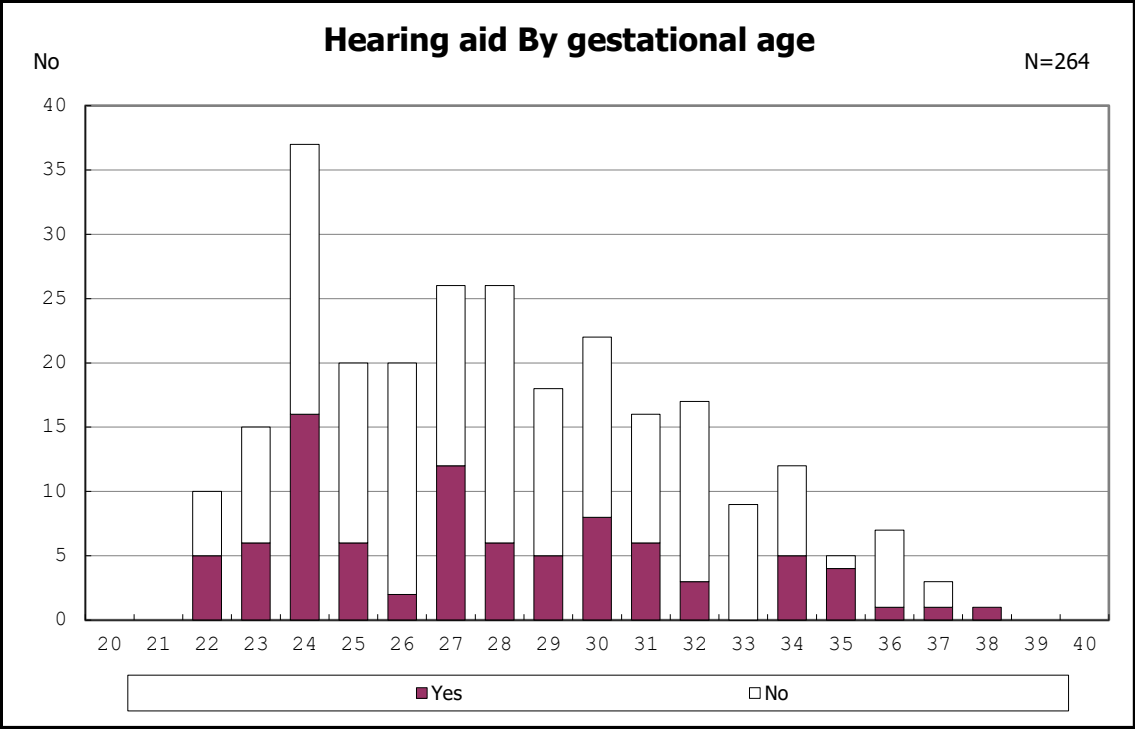
among infants with DQ measured by other than K scale



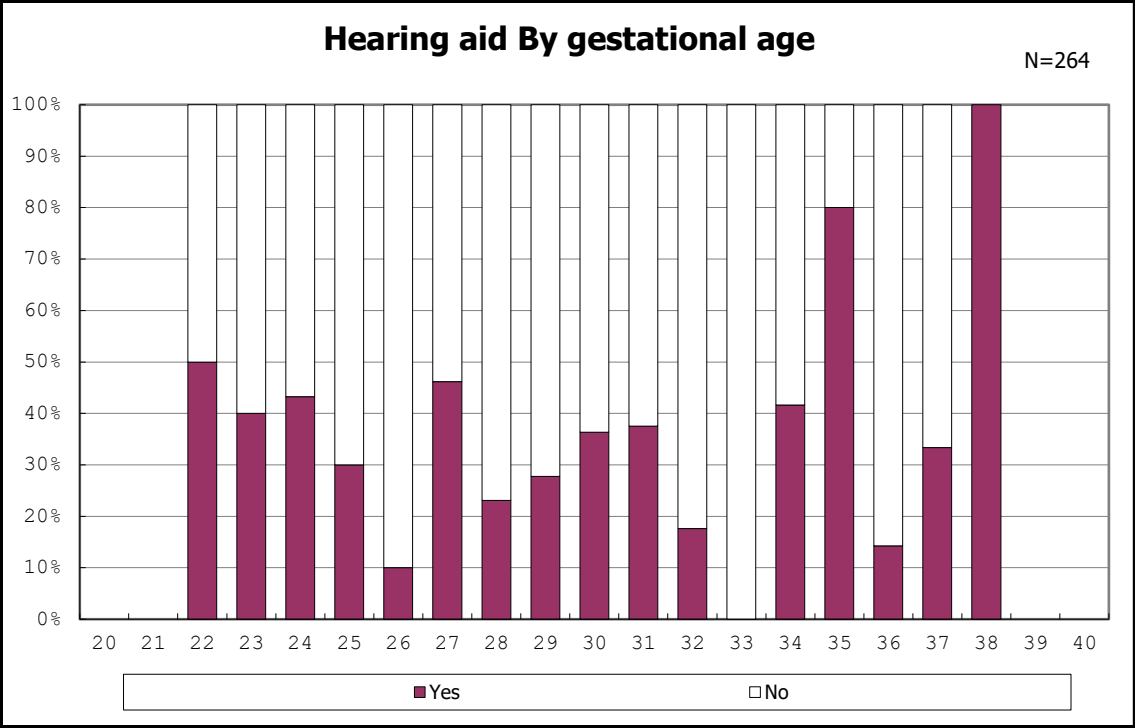
among infants with followup at 1.5 years of age



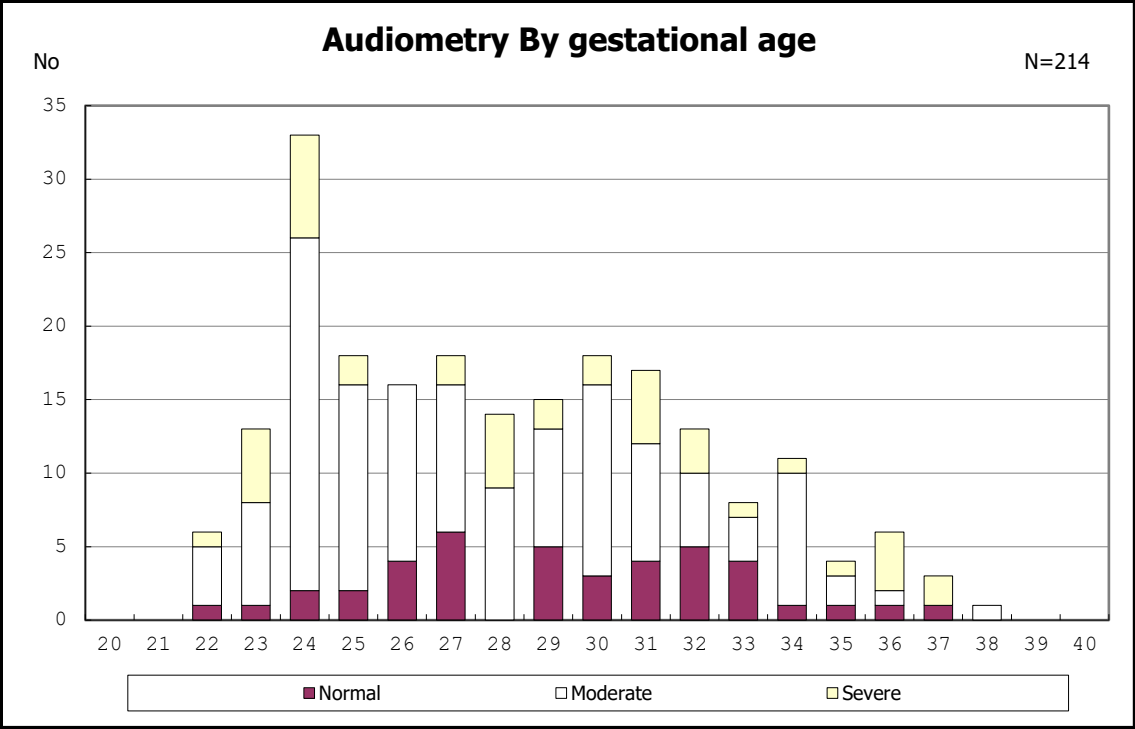
among infants with followup at 1.5 years of age



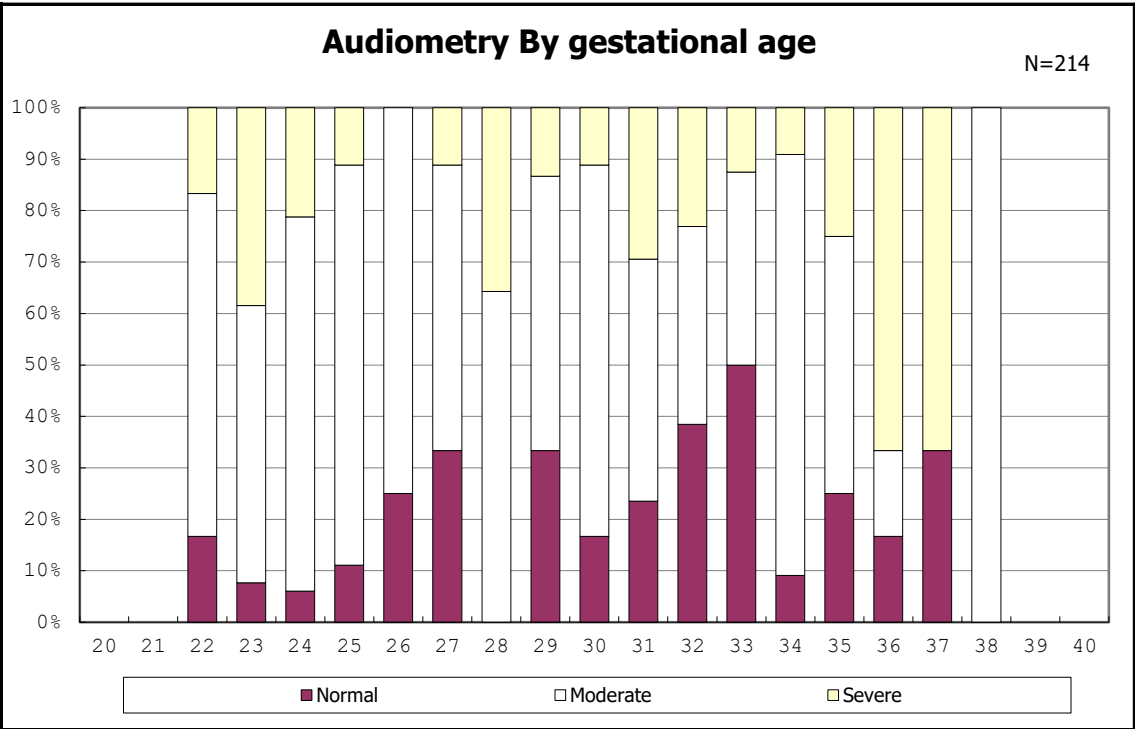
among infants with hearing impairment



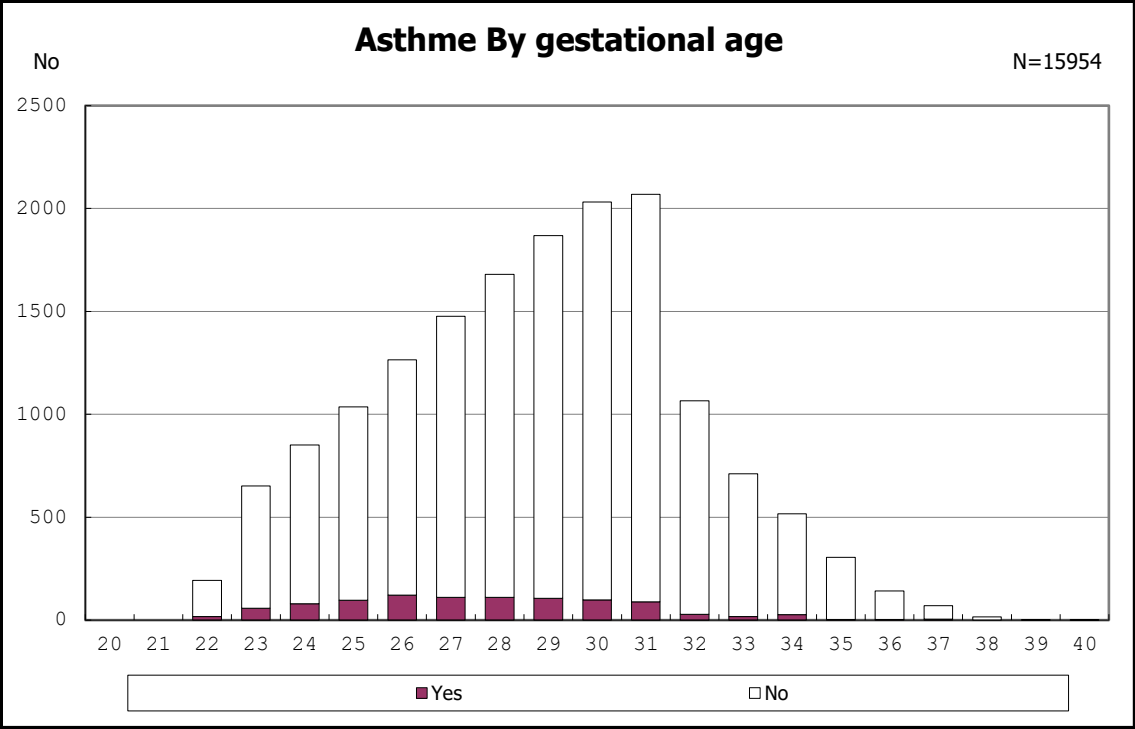
among infants with hearing impairment



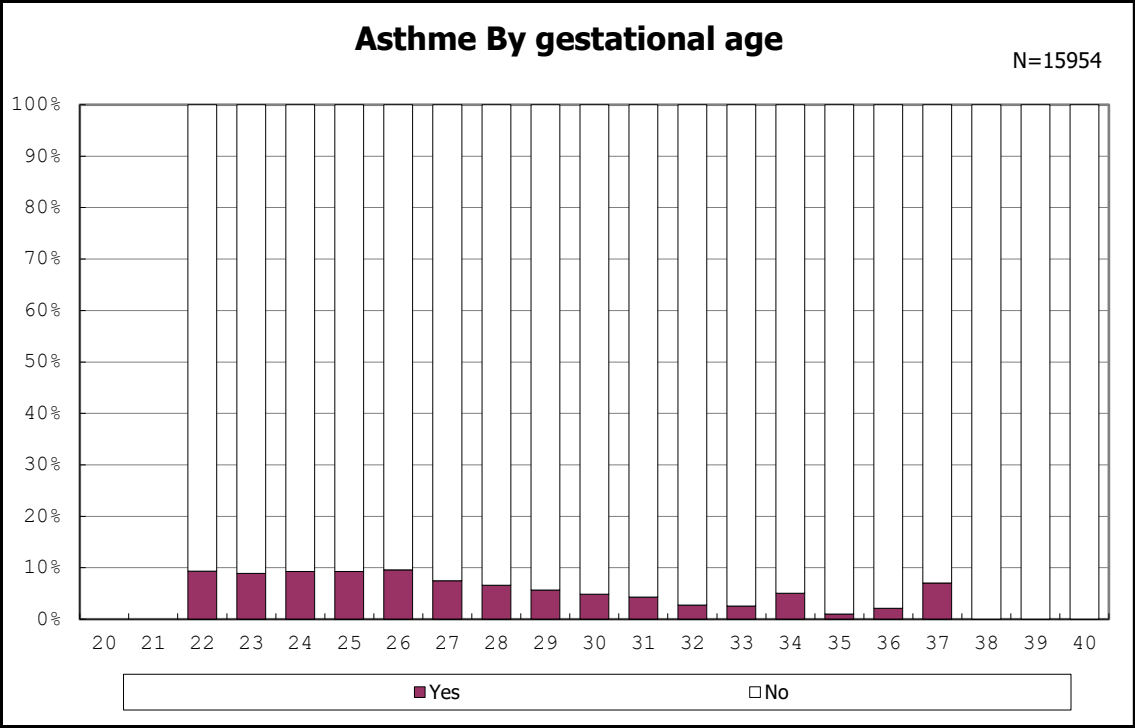
among infants with hearing impairment



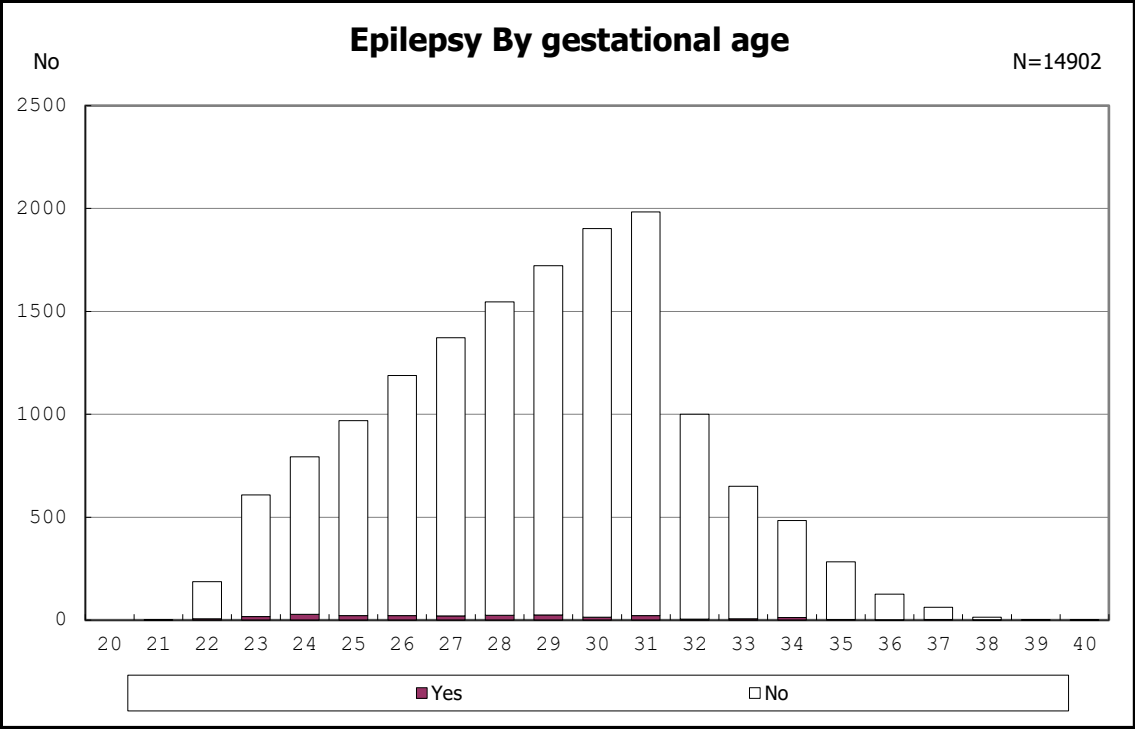
among infants with hearing impairment



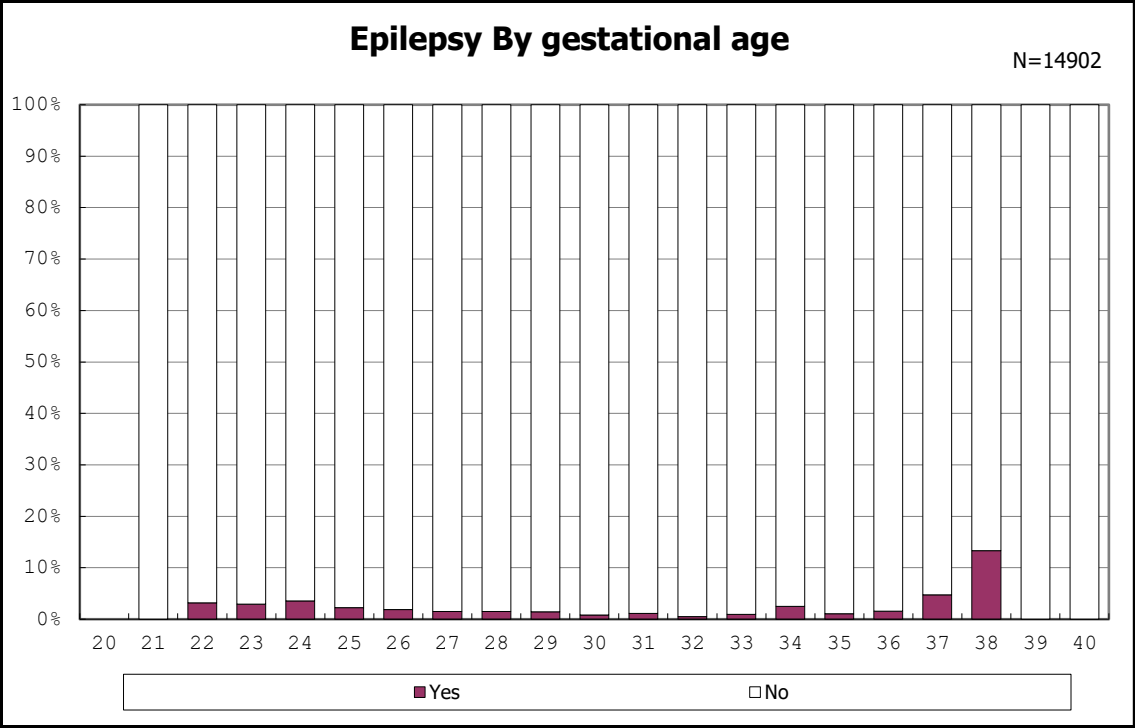
among infants with followup at 1.5 years of age



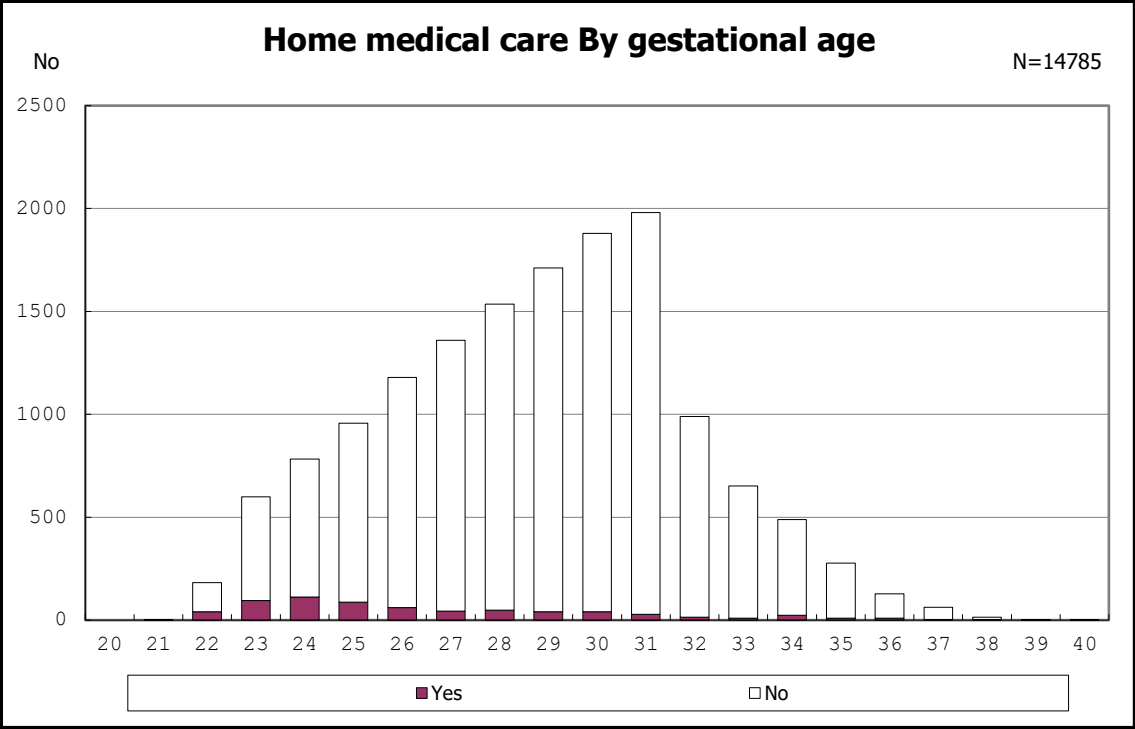
among infants with followup at 1.5 years of age



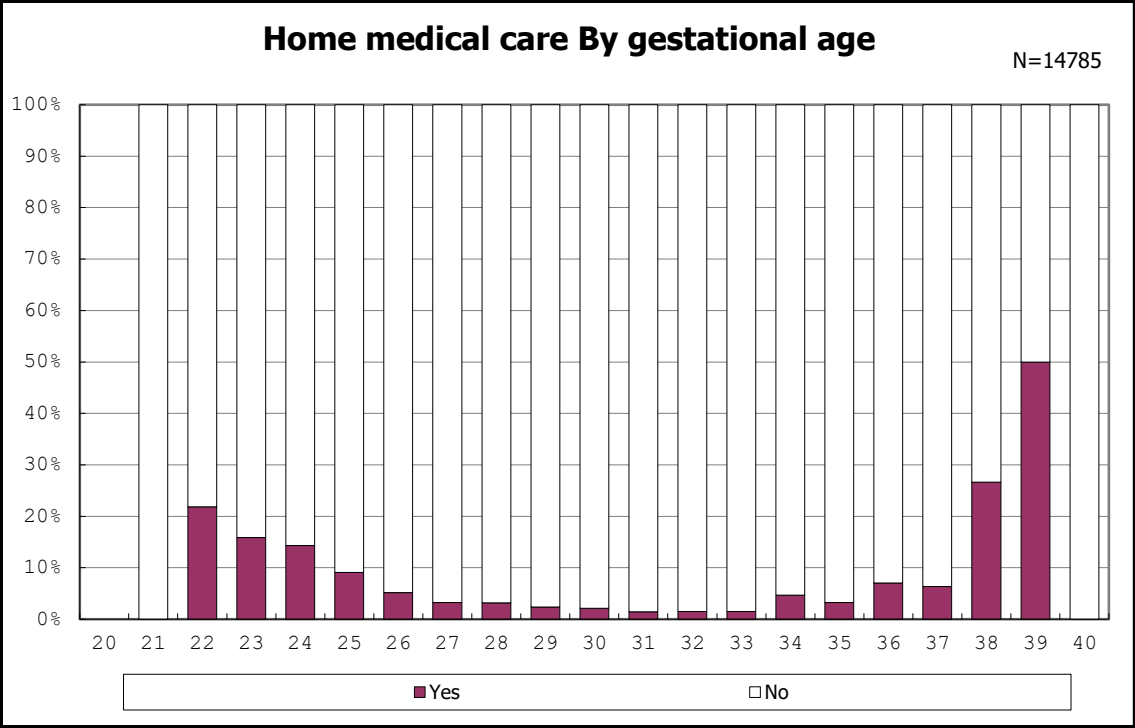
among infants with followup at 1.5 years of age



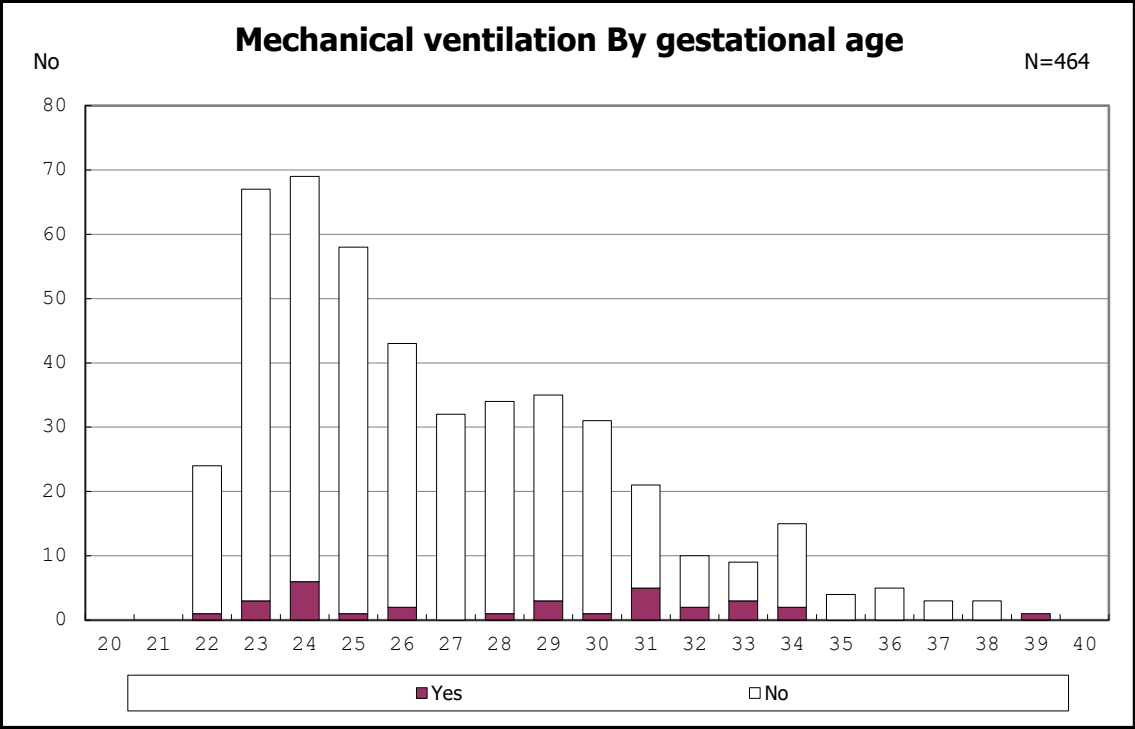
among infants with followup at 1.5 years of age



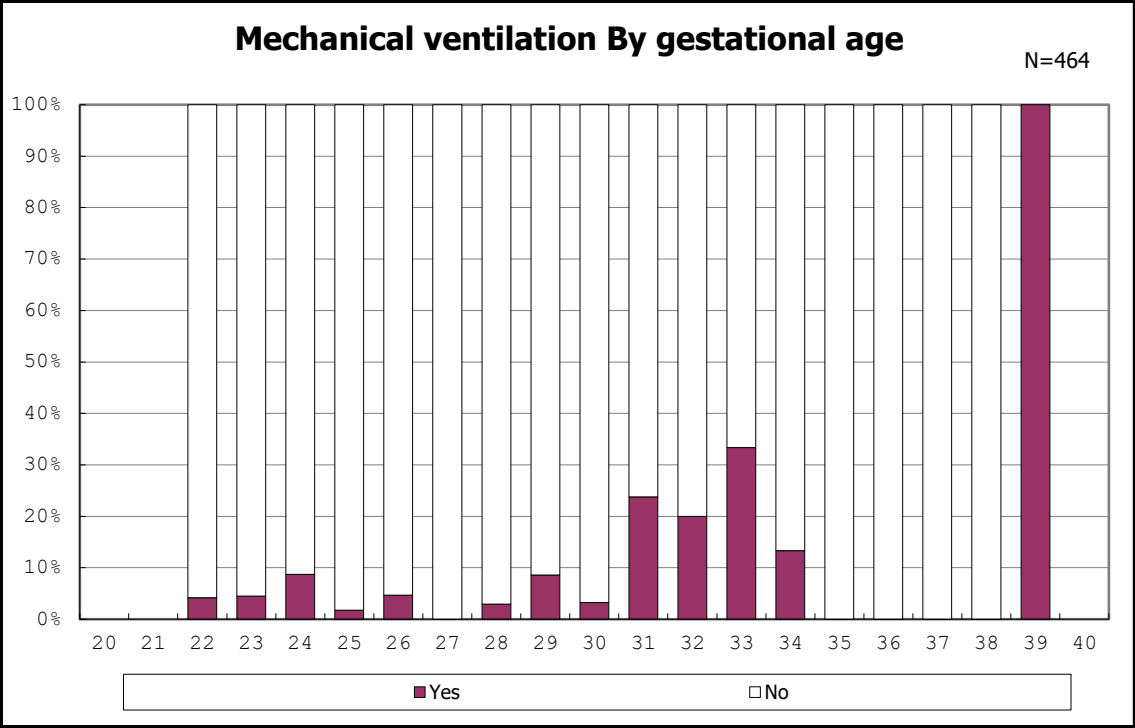
among infants with followup at 1.5 years of age



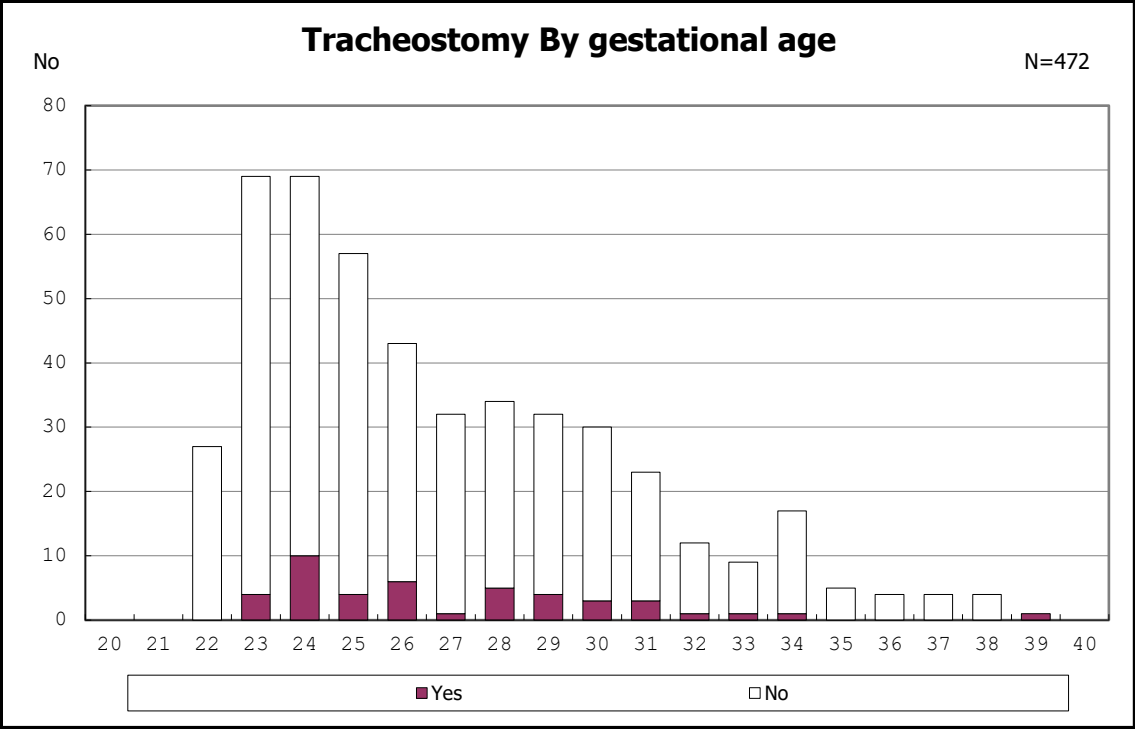
among infants with followup at 1.5 years of age



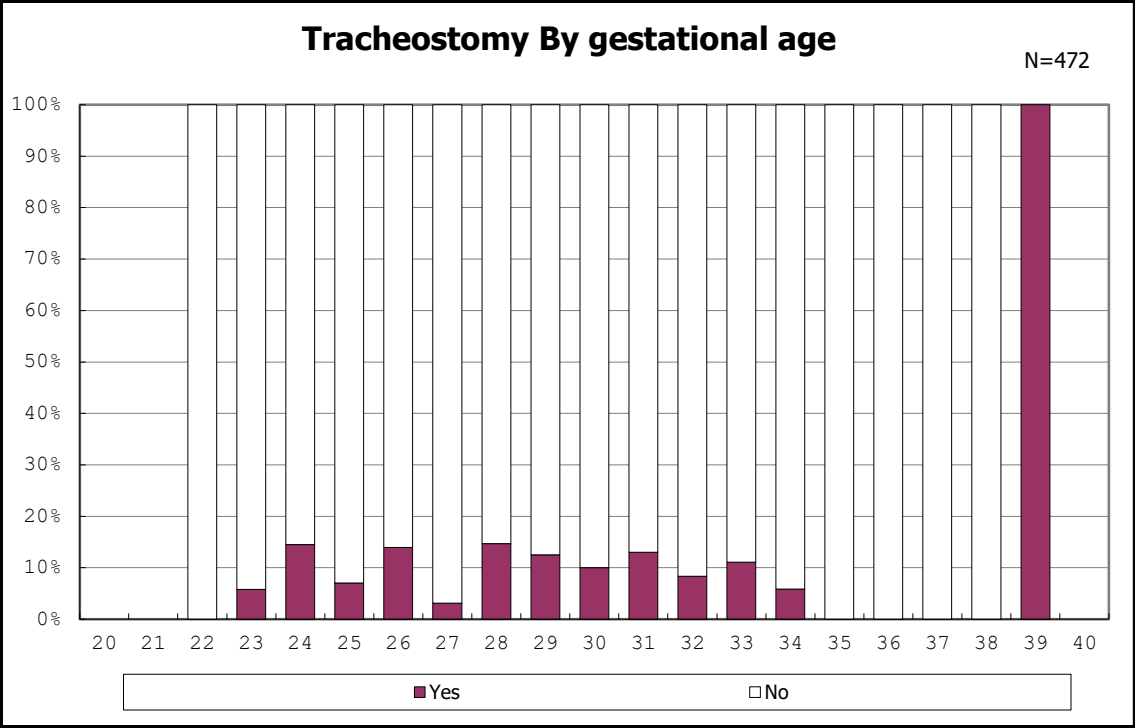
among infants with home medical care



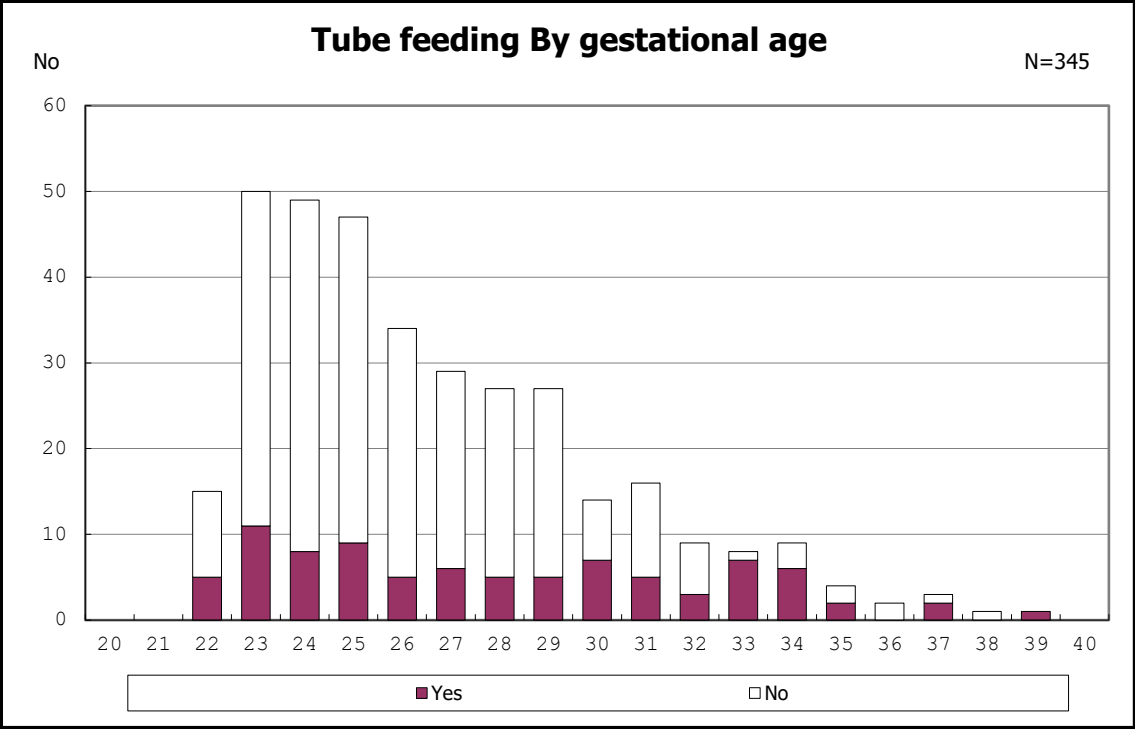
among infants with home medical care



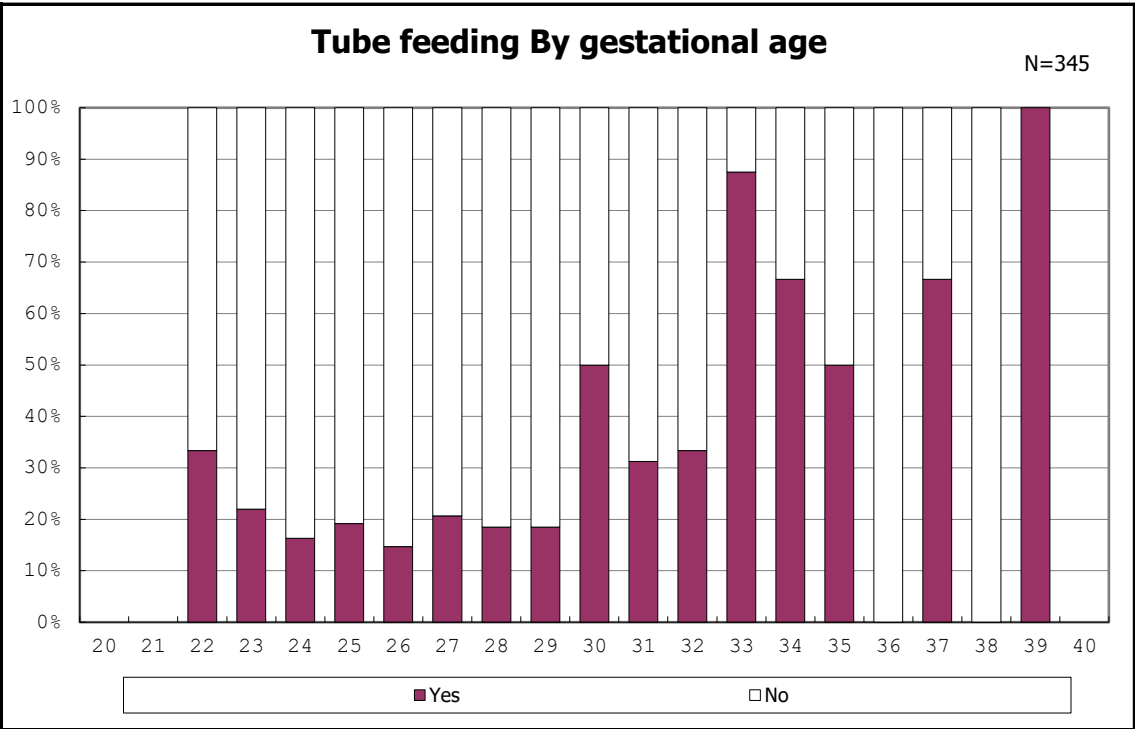
among infants with home medical care



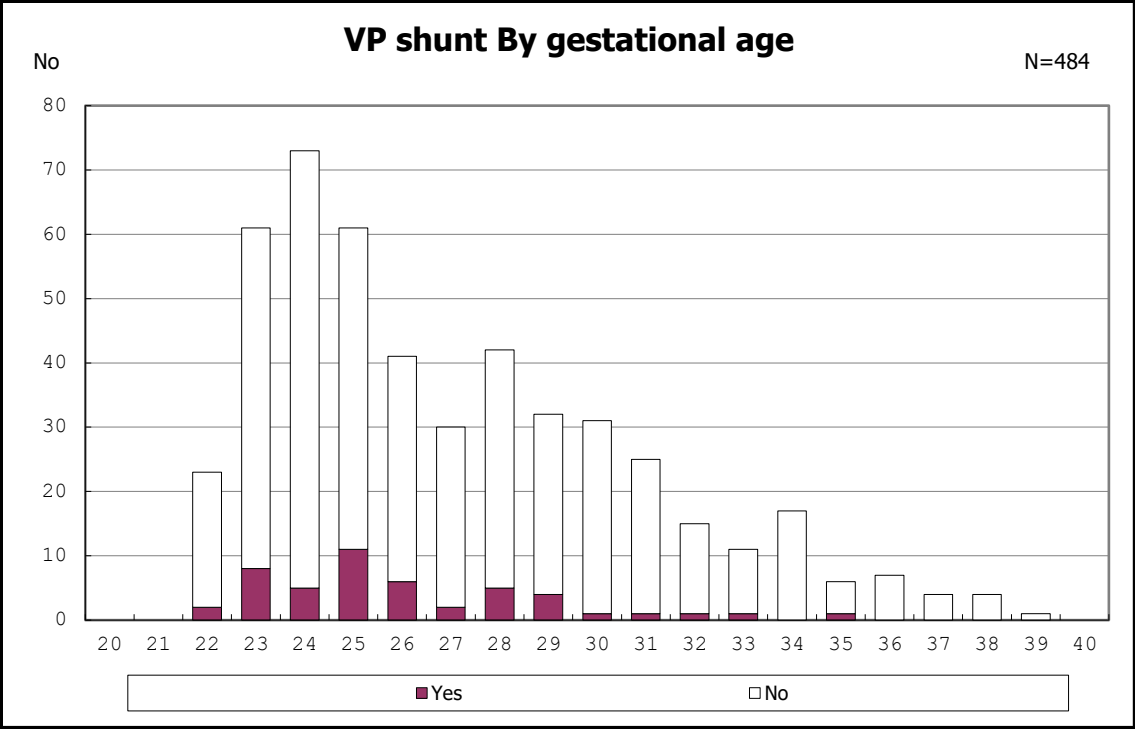
among infants with home medical care



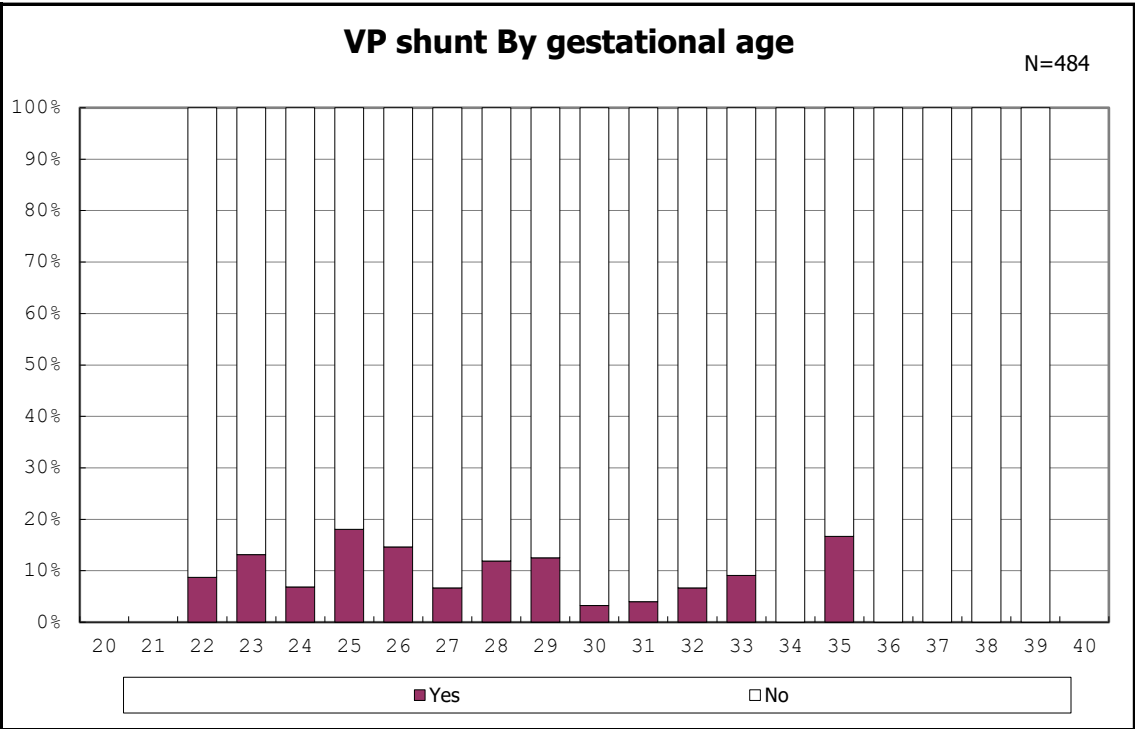
among infants with home medical care



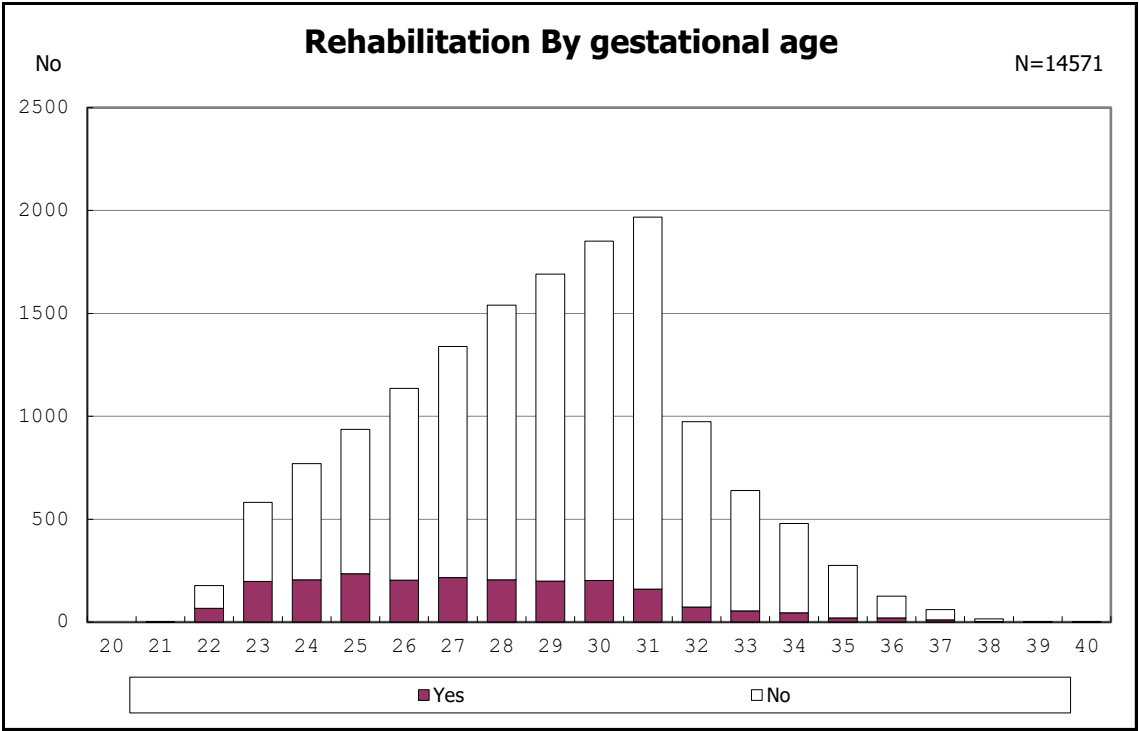
among infants with home medical care



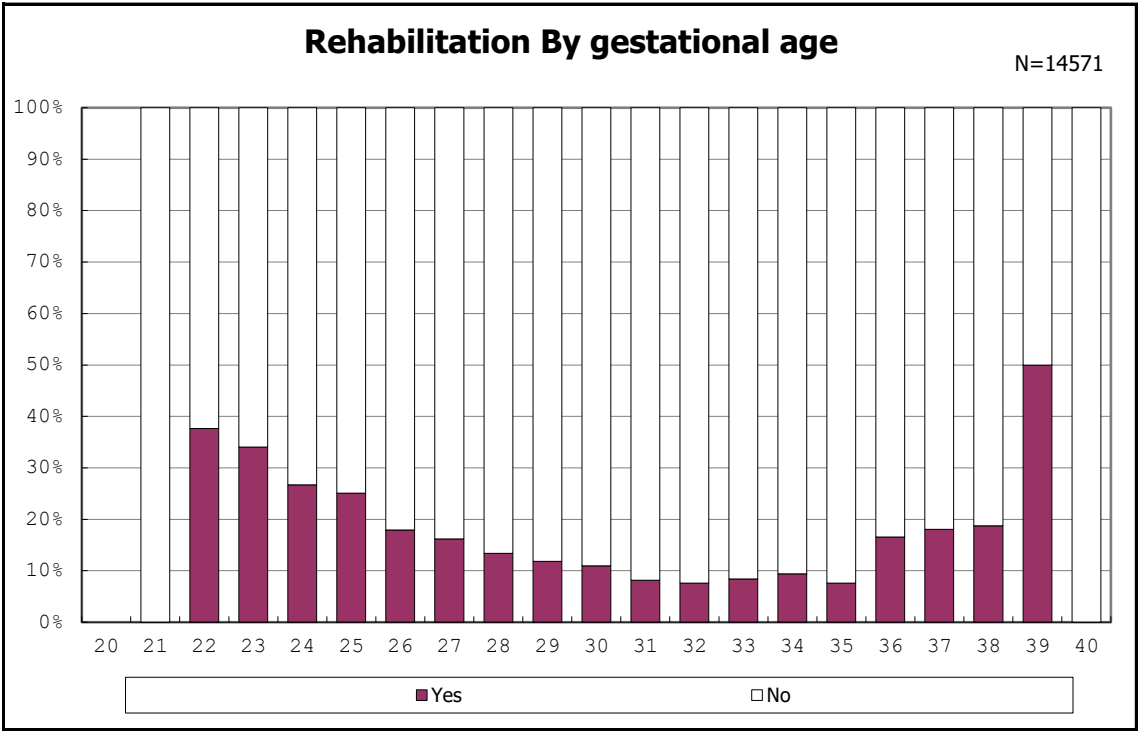
among infants with home medical care



among infants with home medical care



among infants with followup at 1.5 years of age



among infants with followup at 1.5 years of age