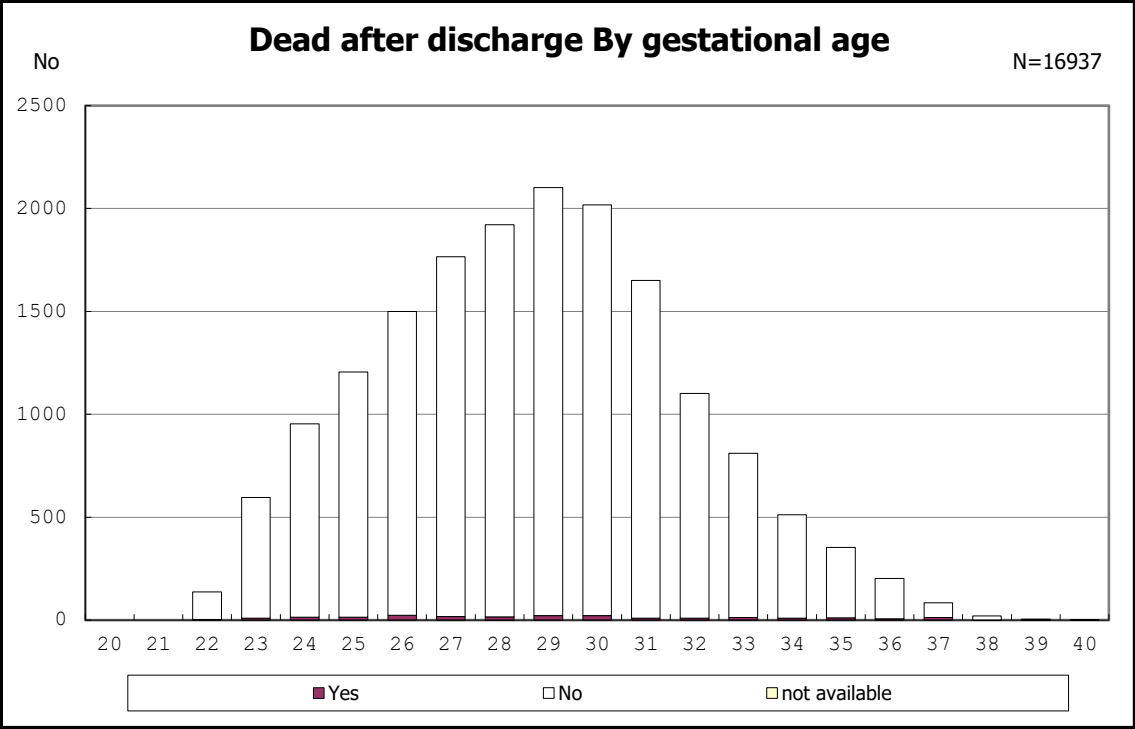




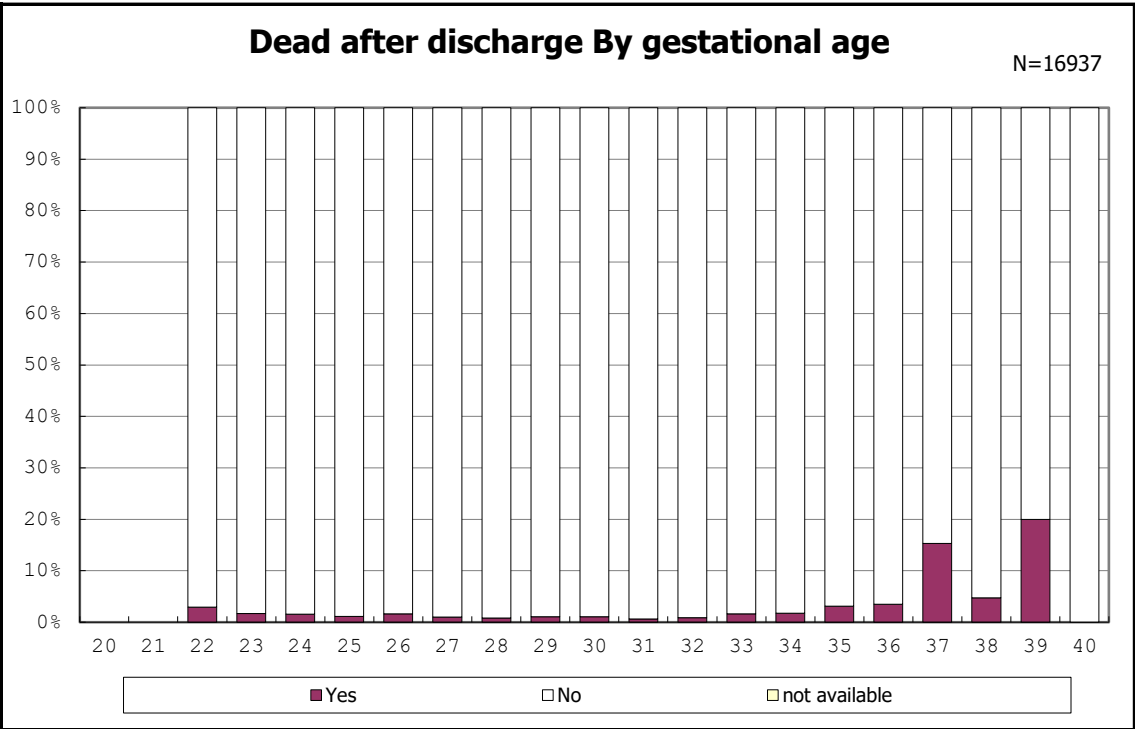
among infants with alive at discharge



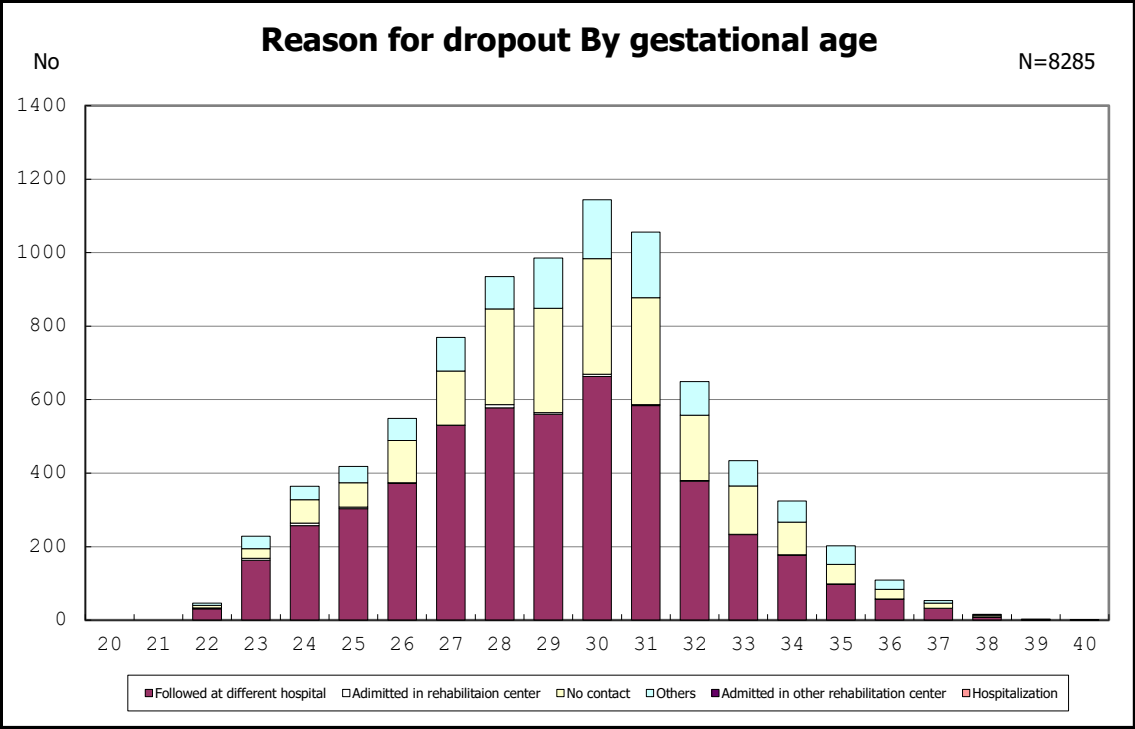
among infants with alive at discharge



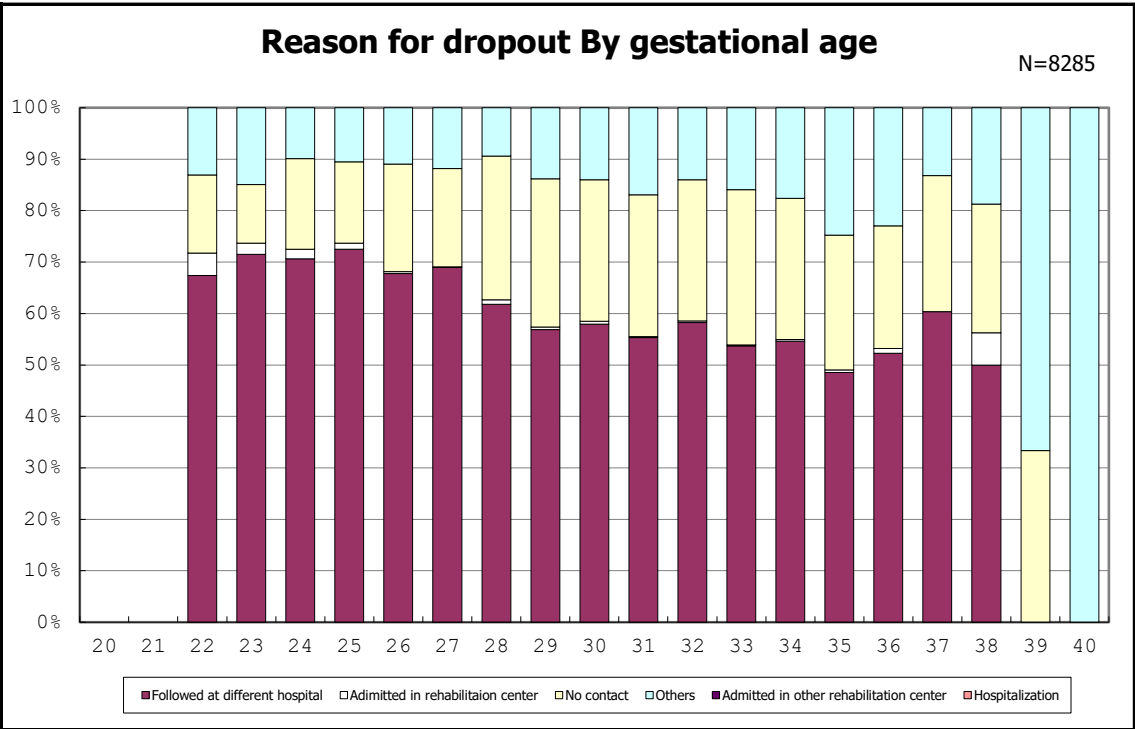
among infants with alive at discharge



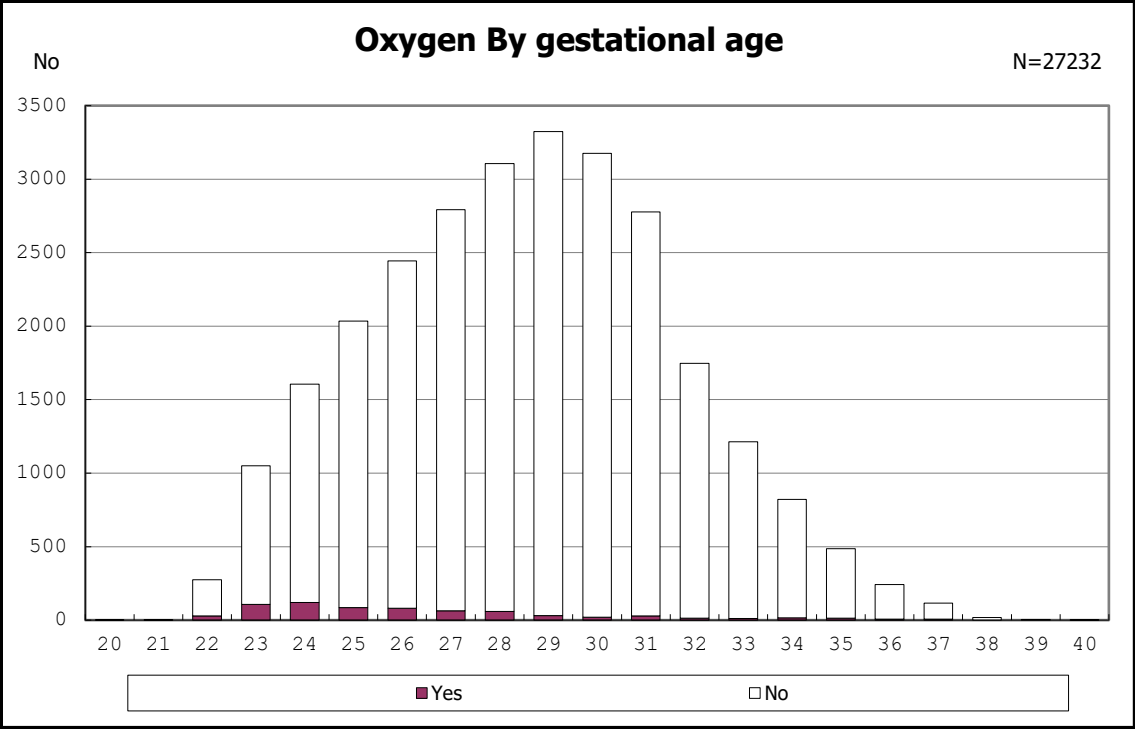
among infants with alive at discharge



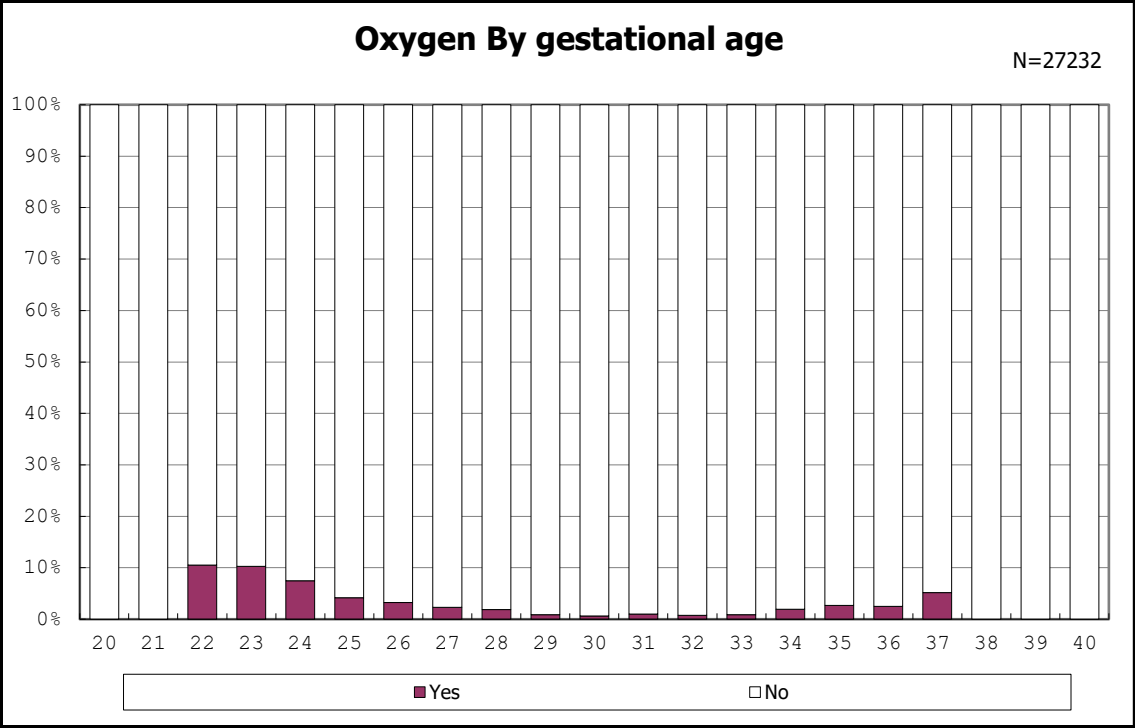
among infants with alive at discharge



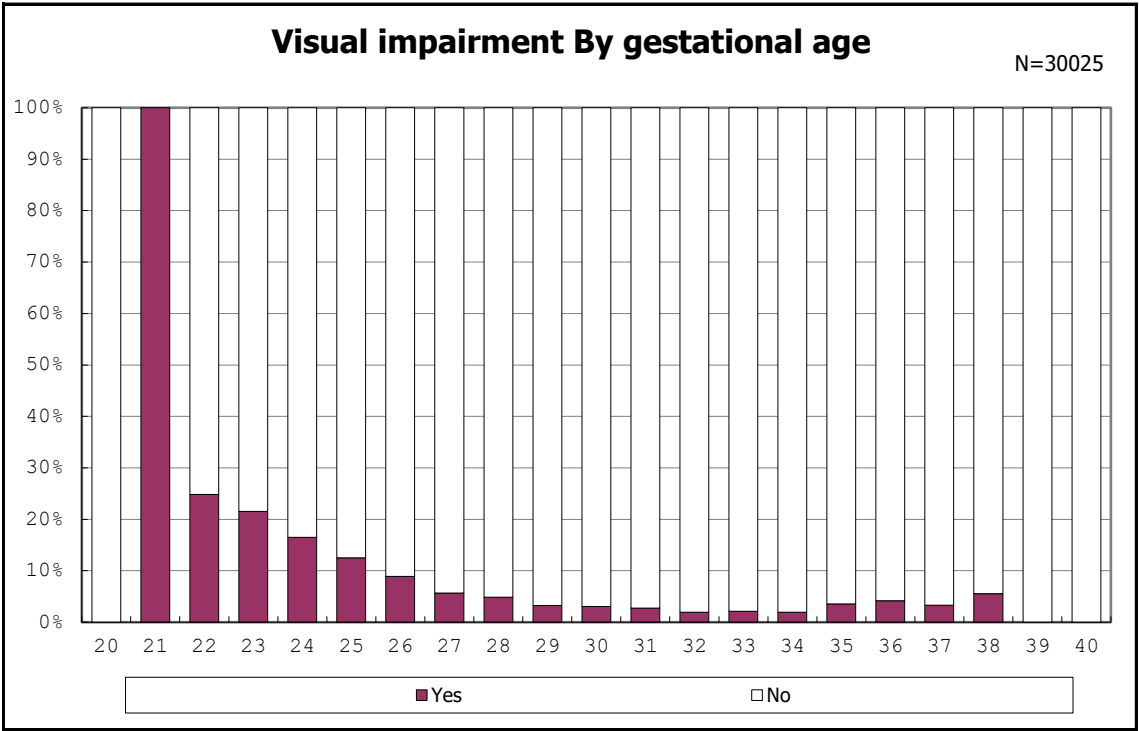
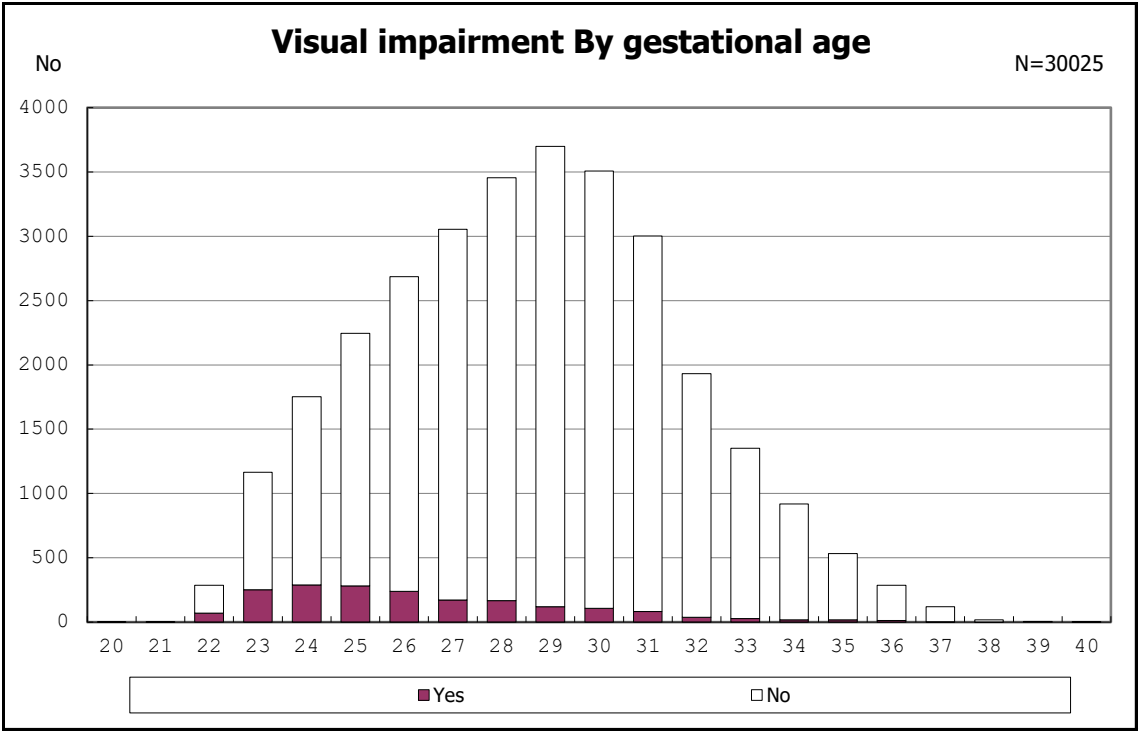
among infants with alive at discharge

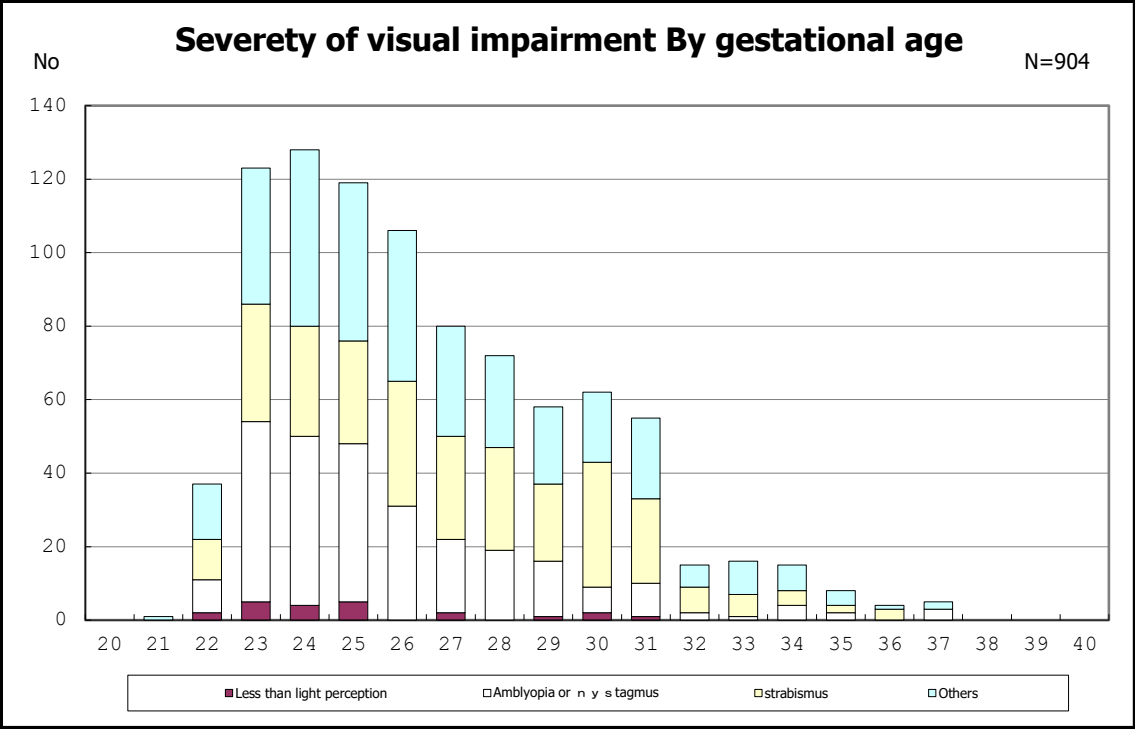


among infants with followup at 3 years of age

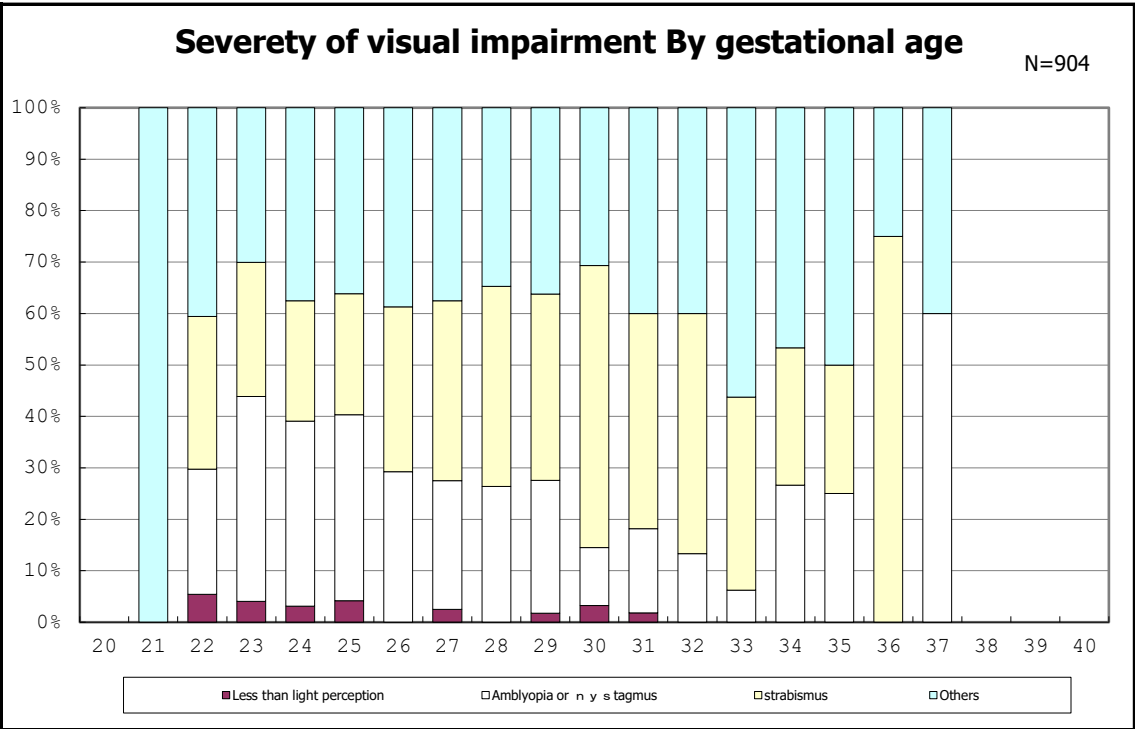


among infants with followup at 3 years of age





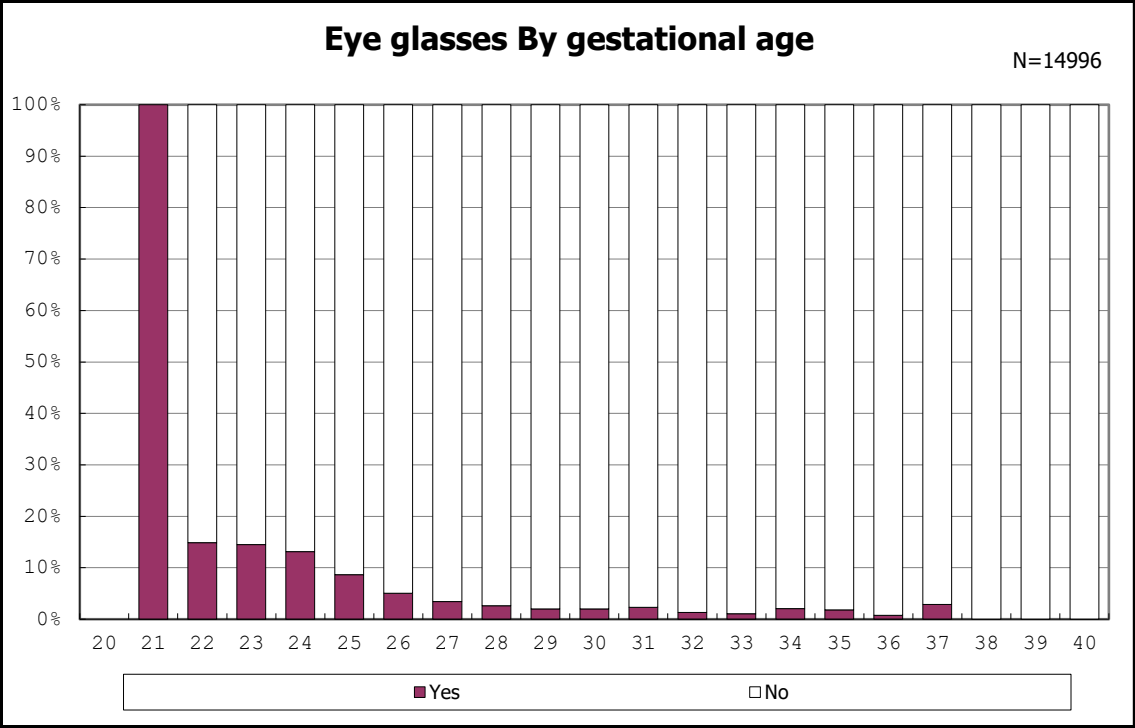
among infants with visual impairment



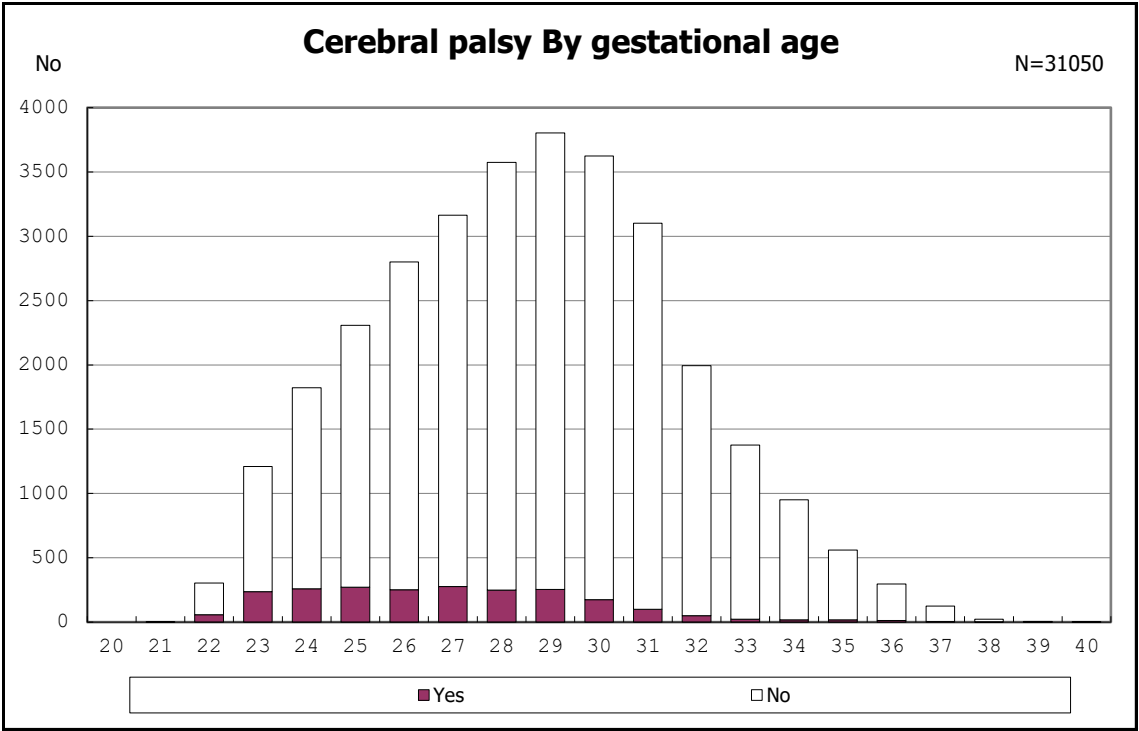
among infants with visual impairment



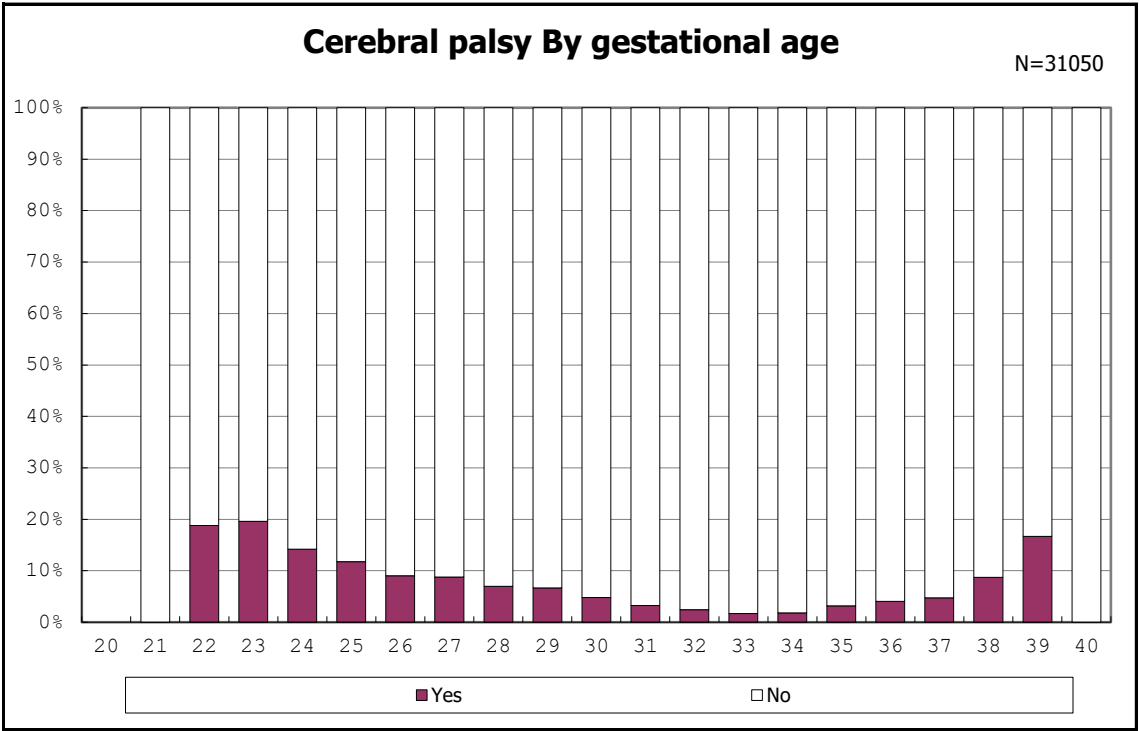
among infants with visual impairment



among infants with visual impairment

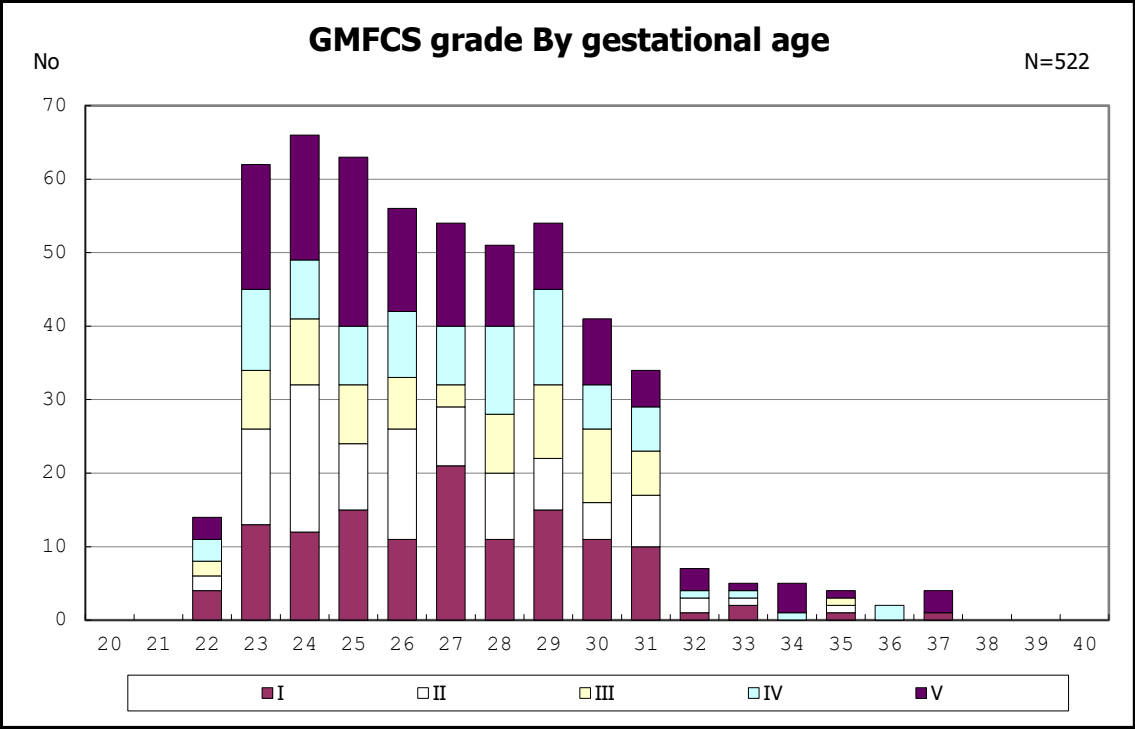


among infants with followup at 3 years of age

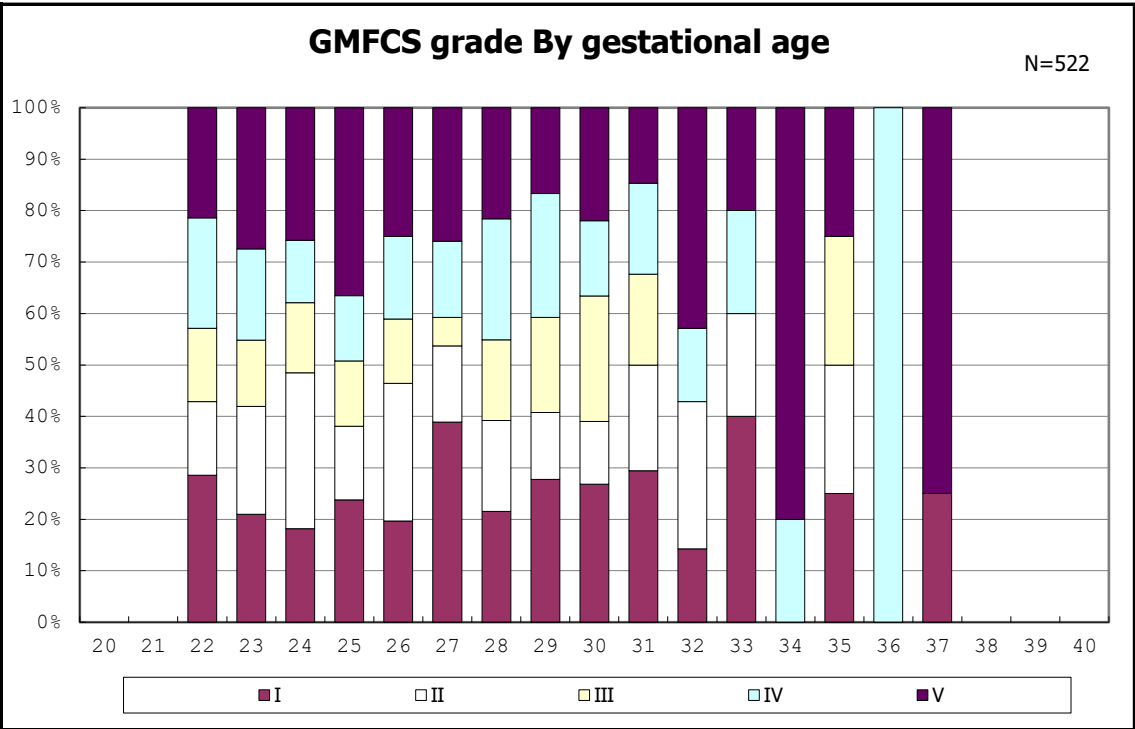


among infants with followup at 3 years of age

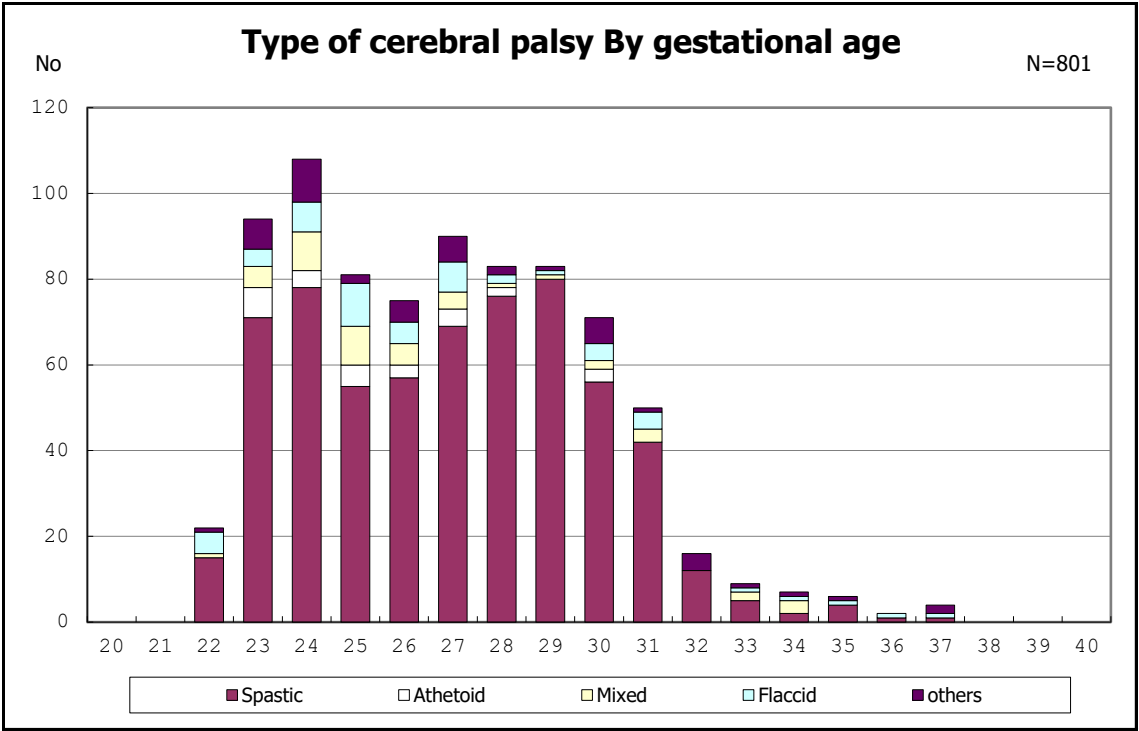




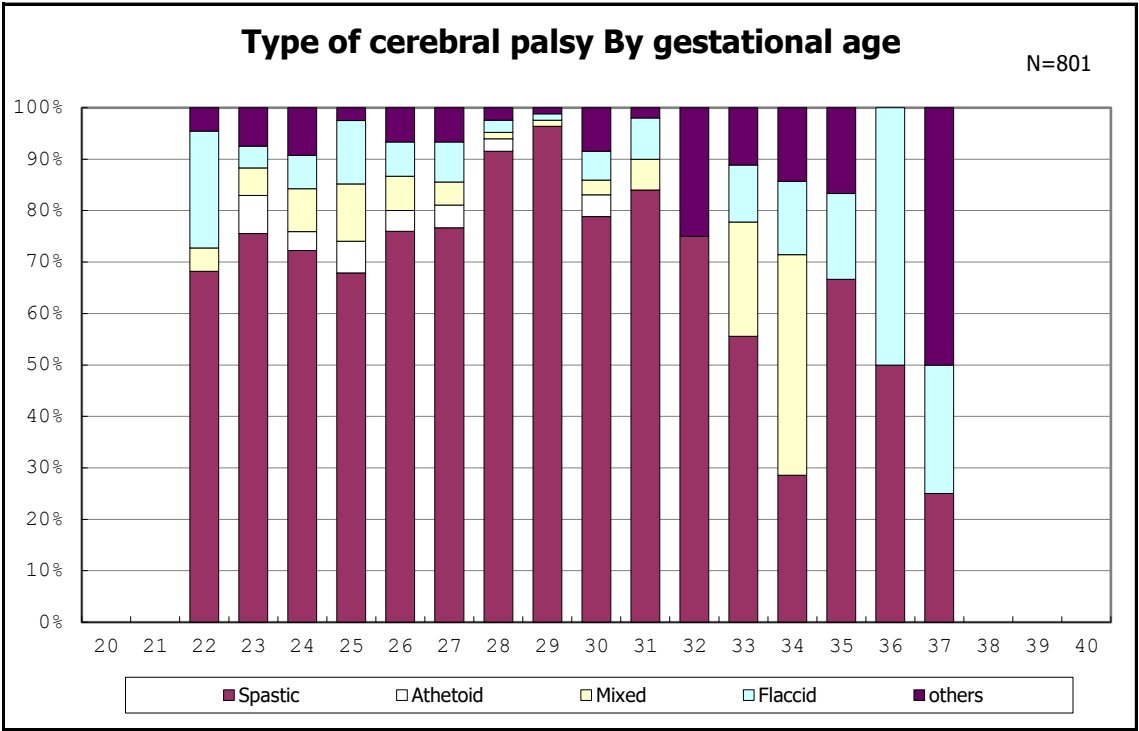
among infants with cerebral palsy



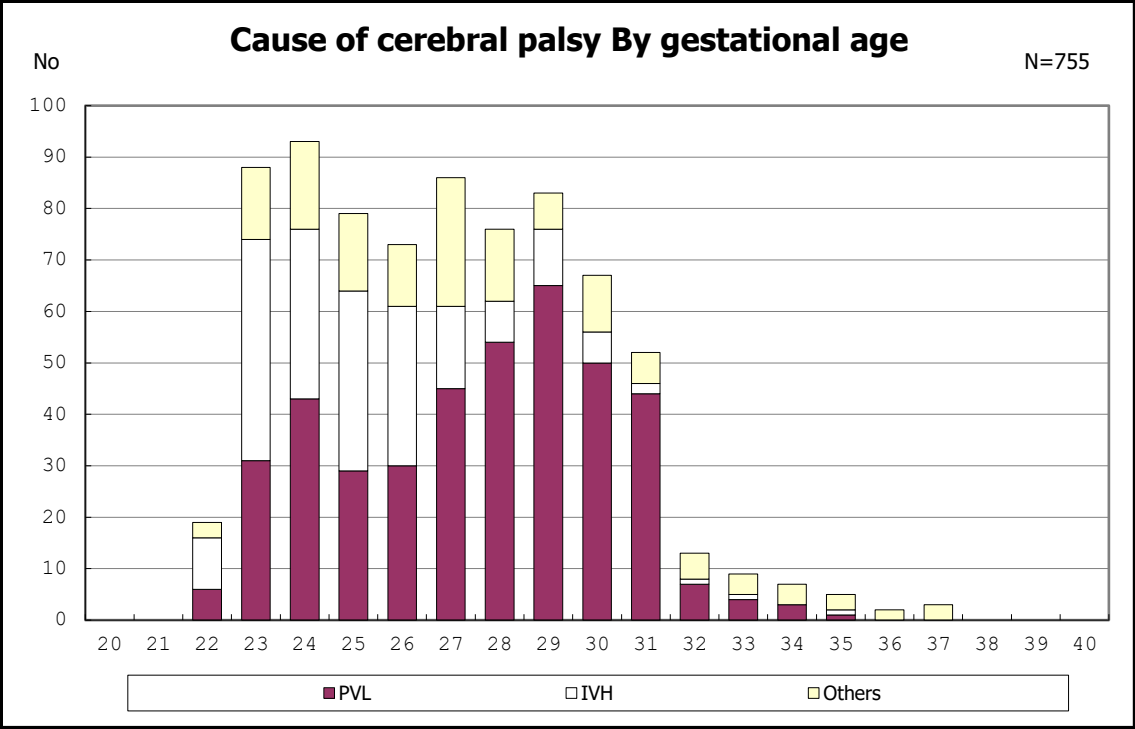
among infants with cerebral palsy



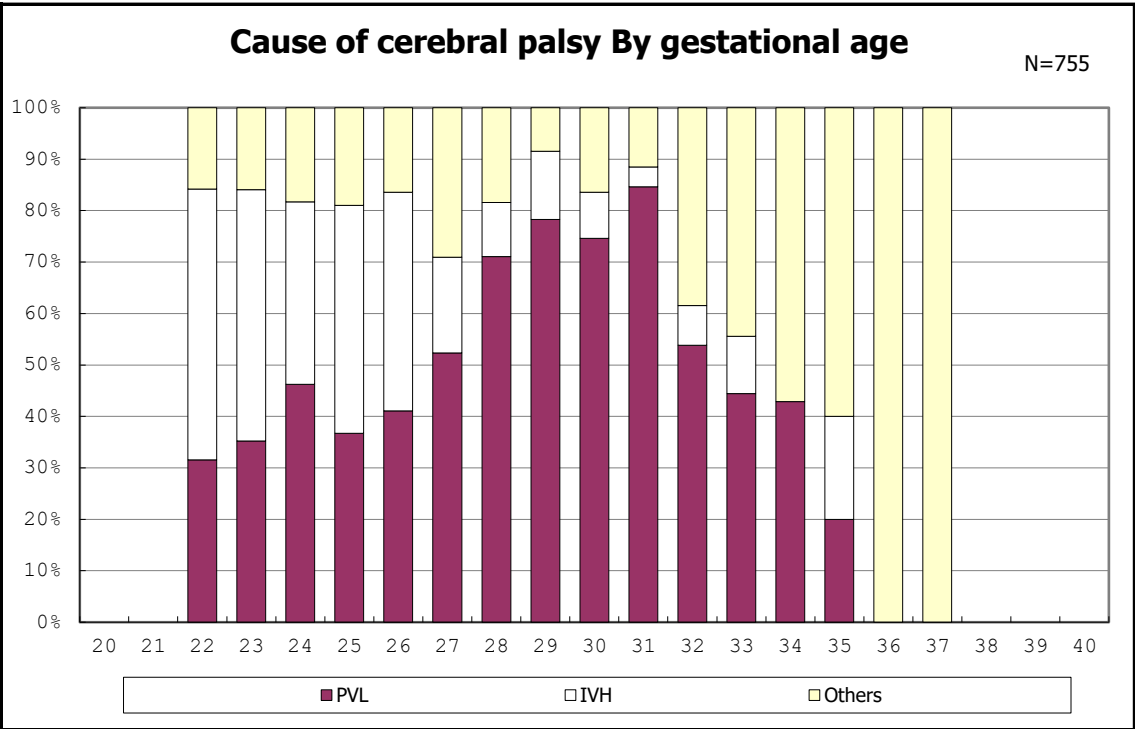
among infants with cerebral palsy



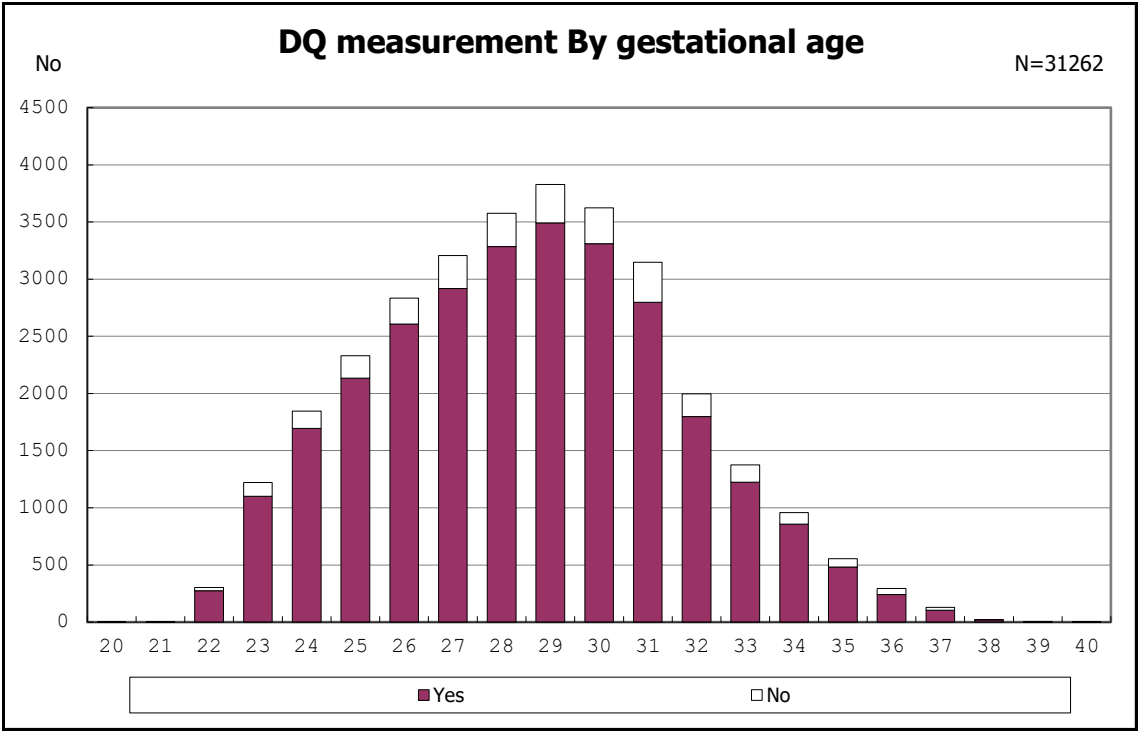
among infants with cerebral palsy



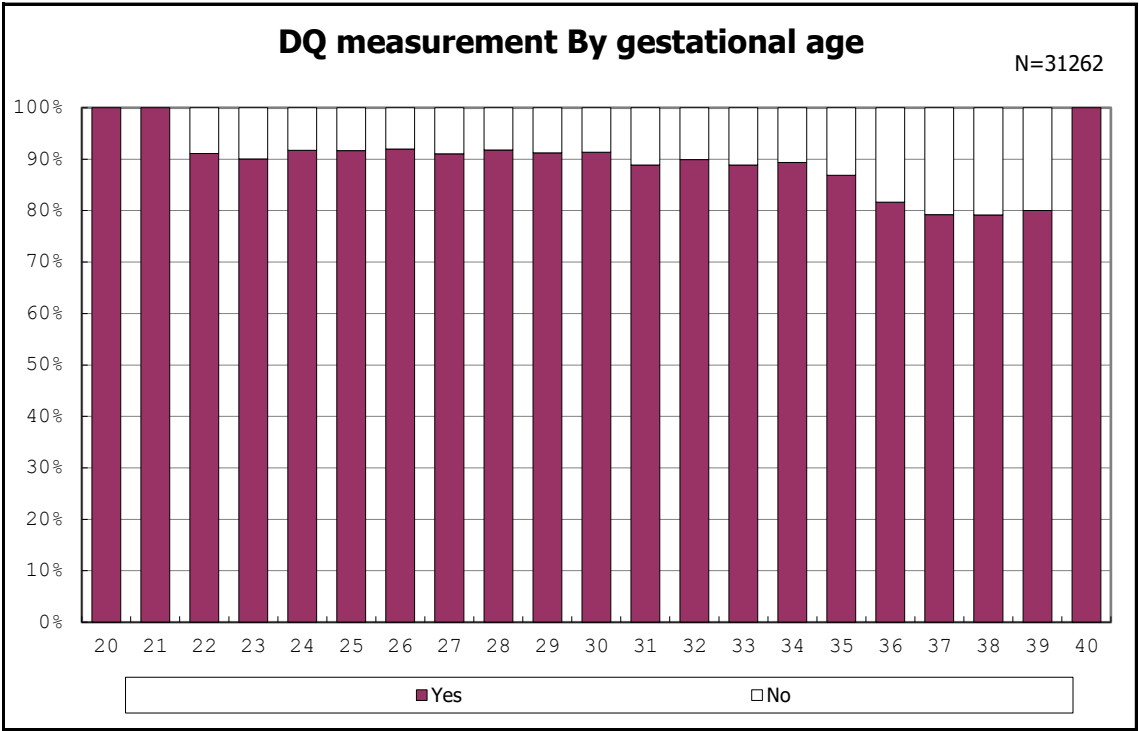
among infants with cerebral palsy



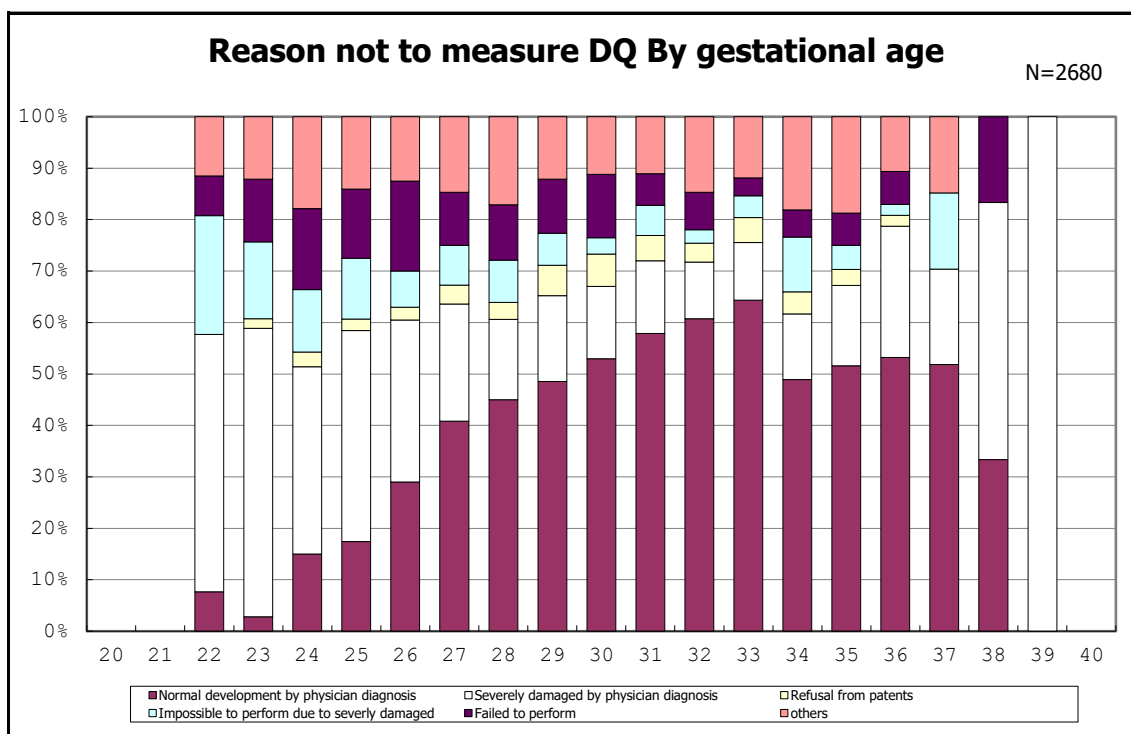
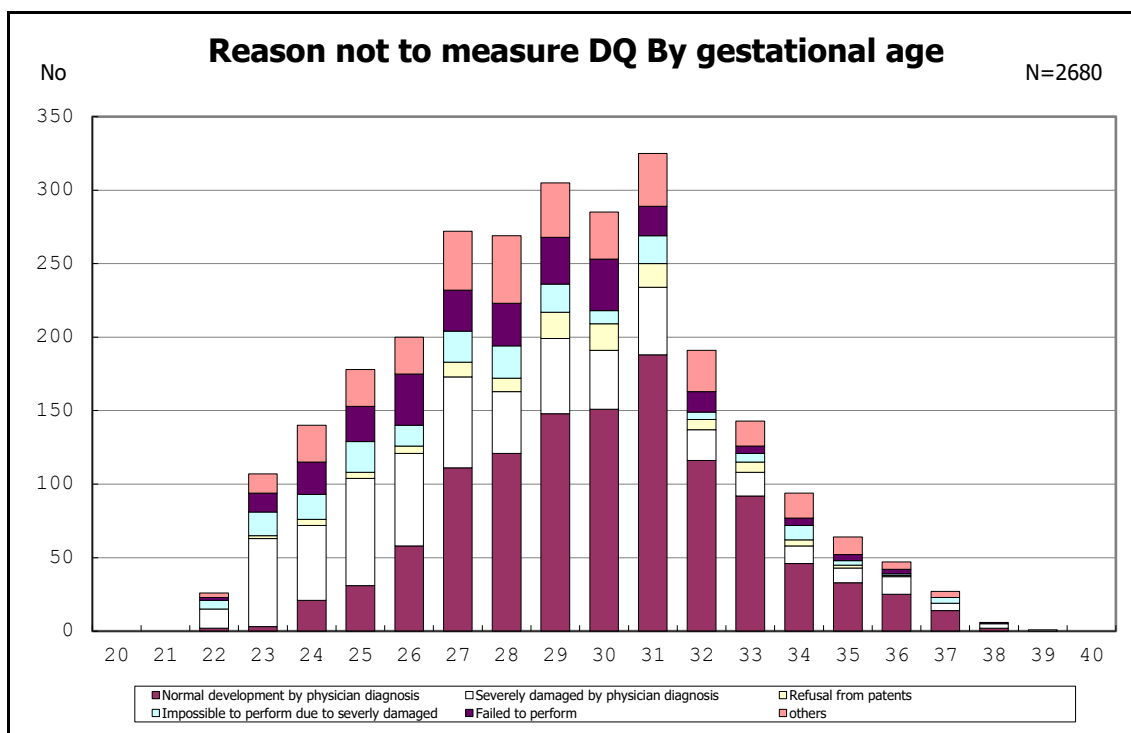
among infants with cerebral palsy

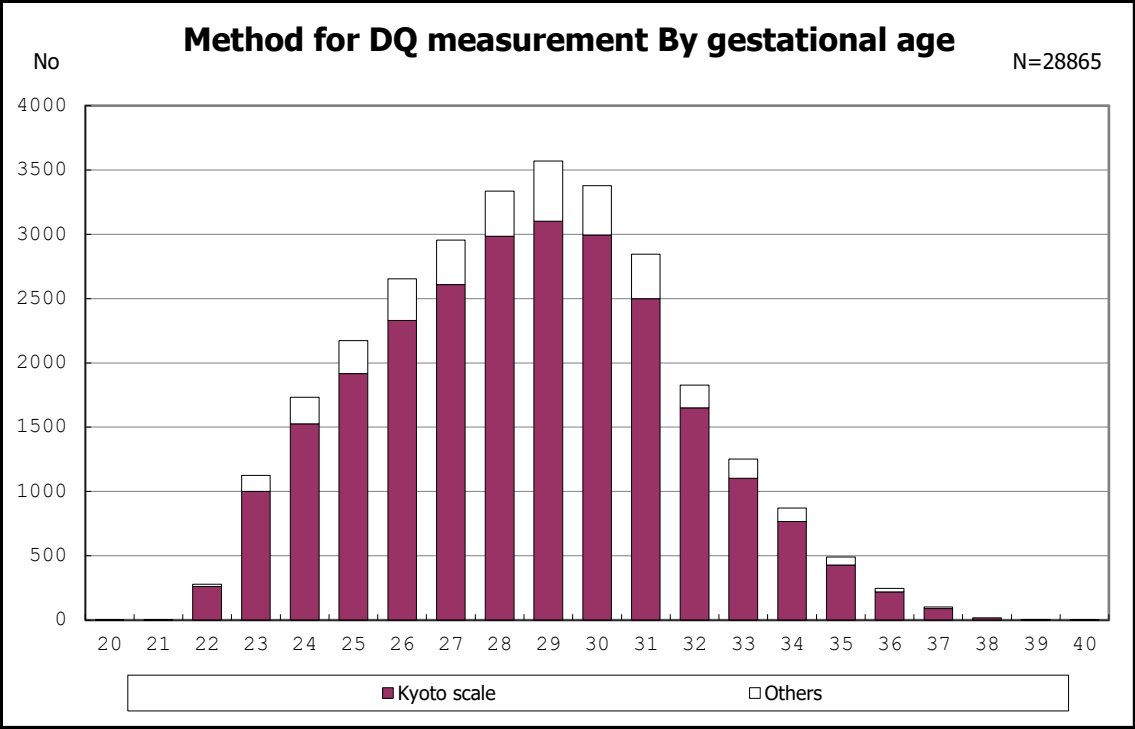


among infants with followup at 3 years of age

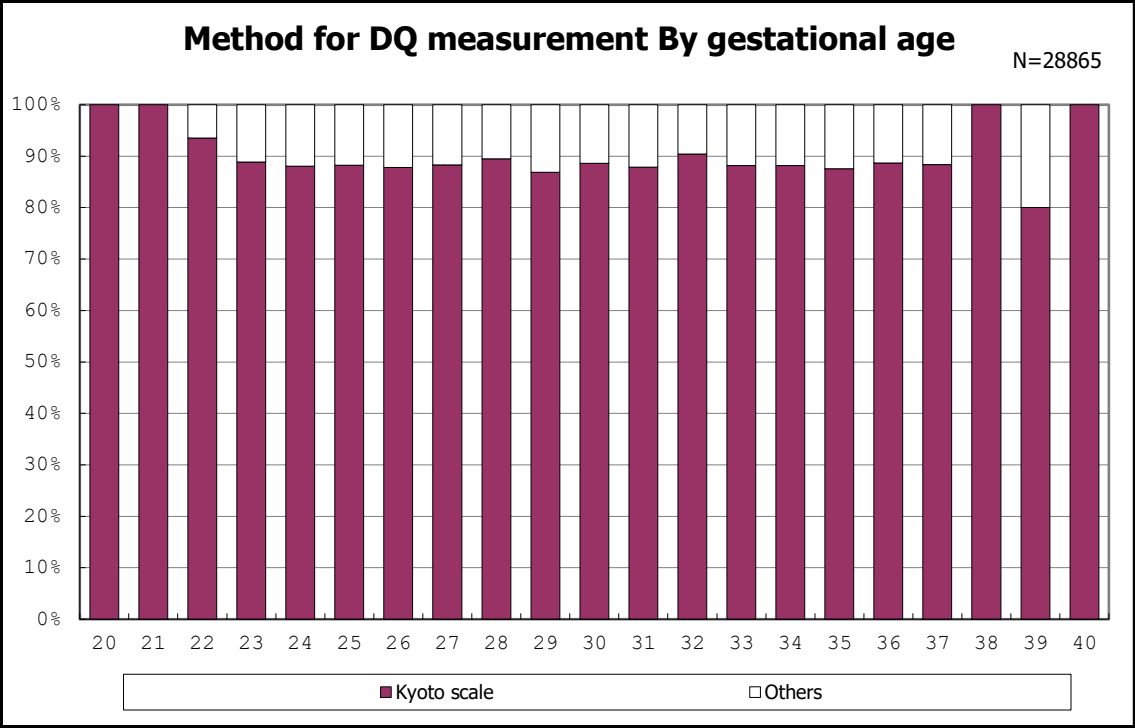


among infants with followup at 3 years of age

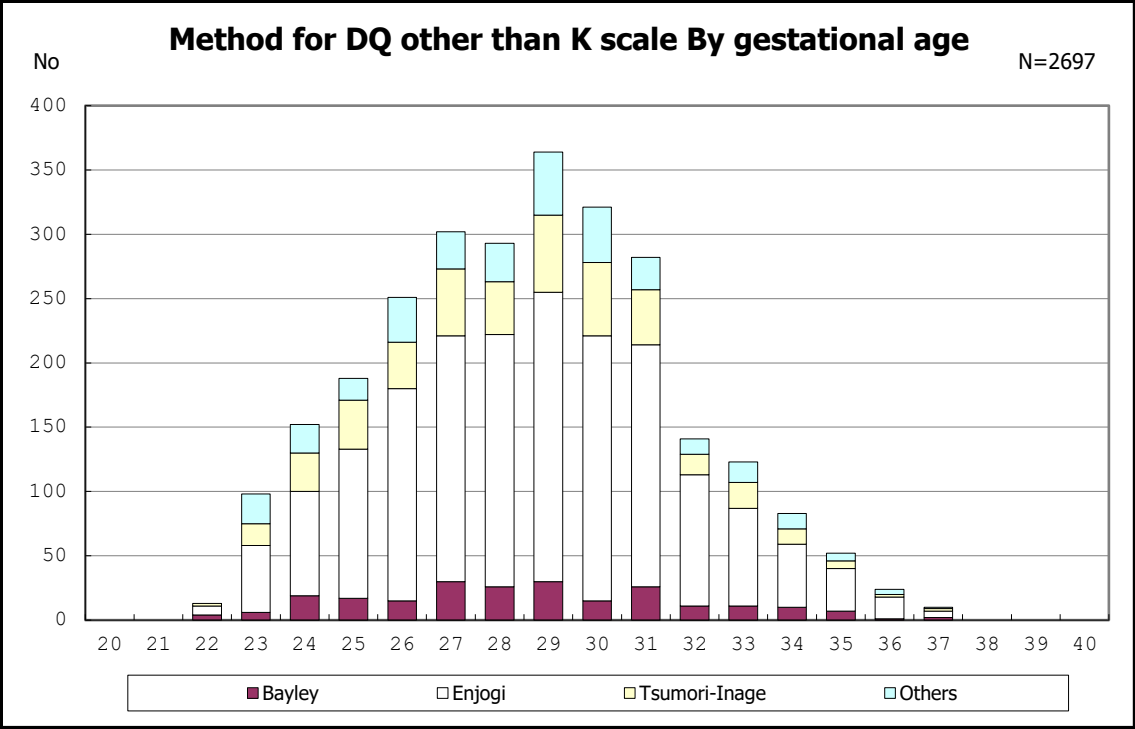




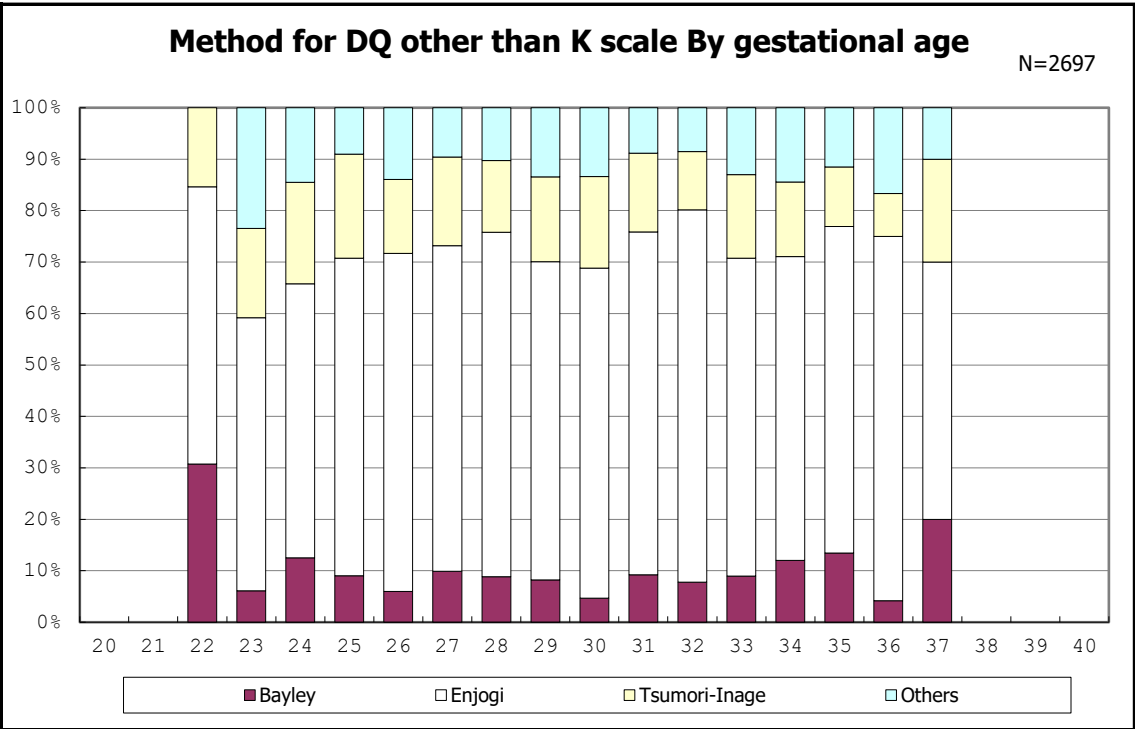
among infants with followup at 1.5 years of age



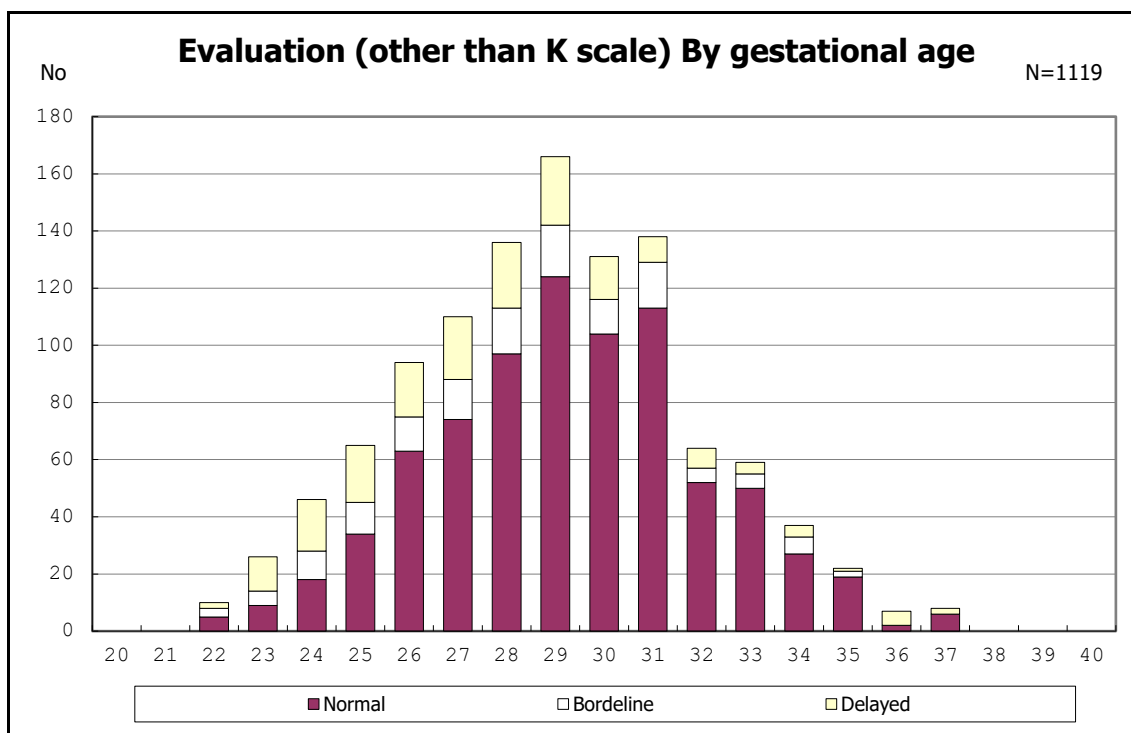
among infants with followup at 1.5 years of age



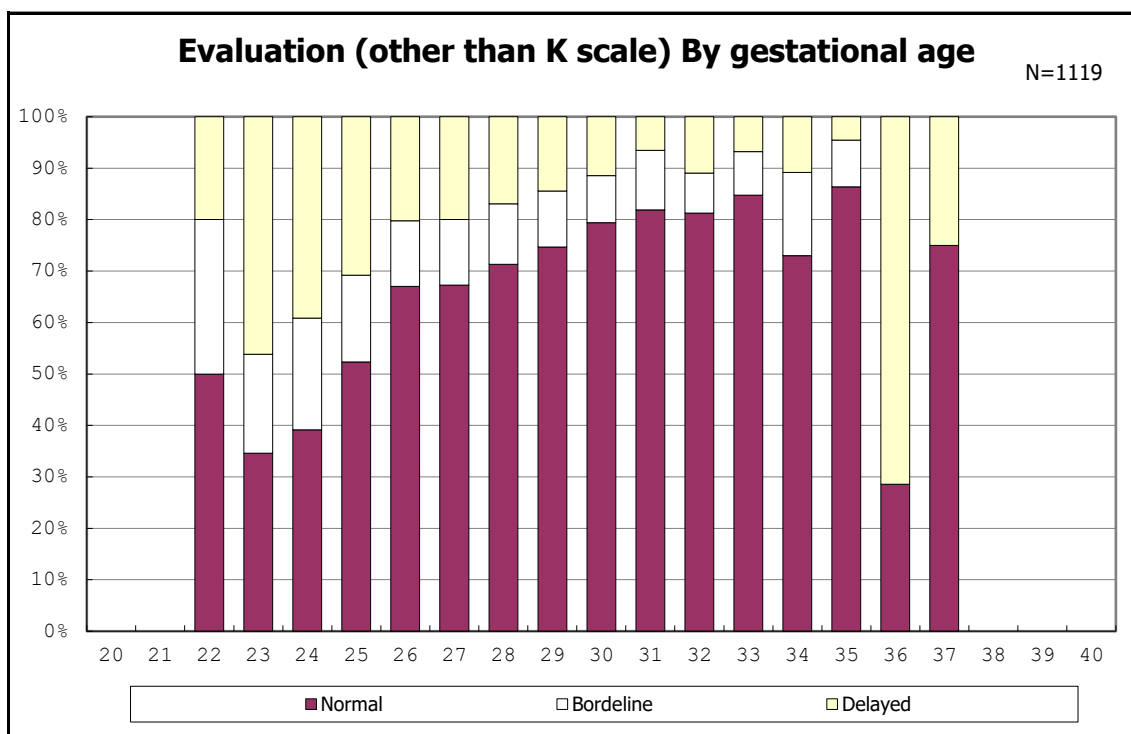
among infants with DQ measured by other than K scale



among infants with DQ measured by other than K scale

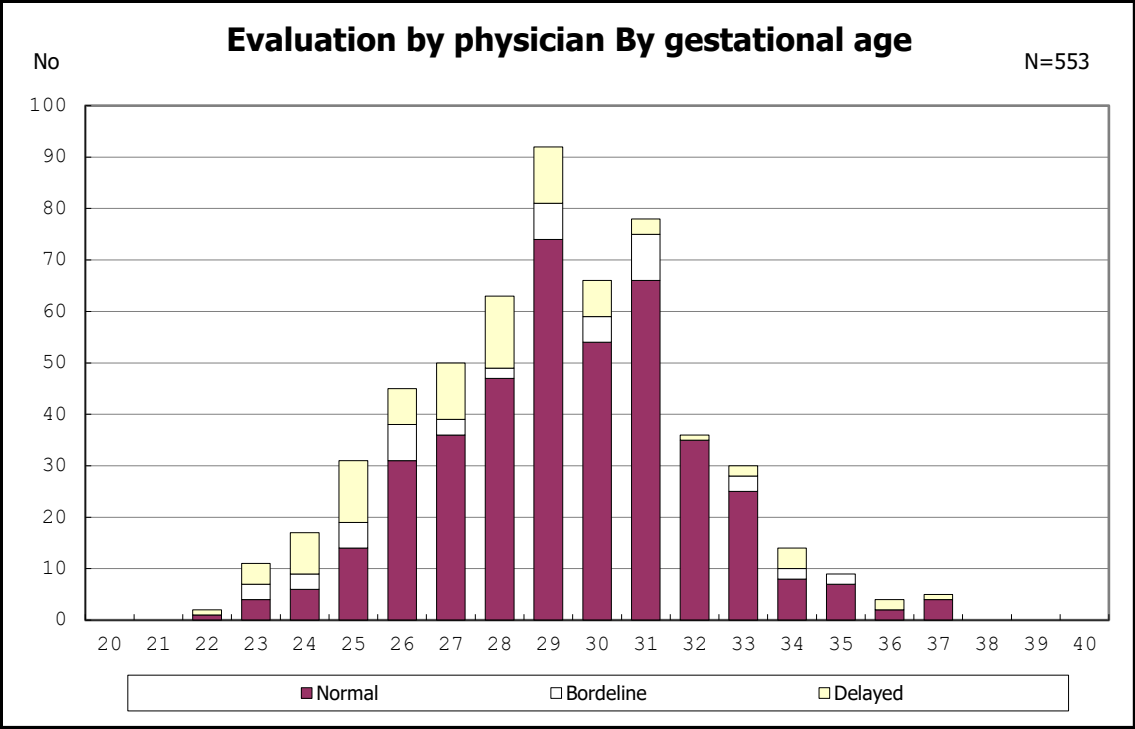


among infants with DQ measured by other than K scale

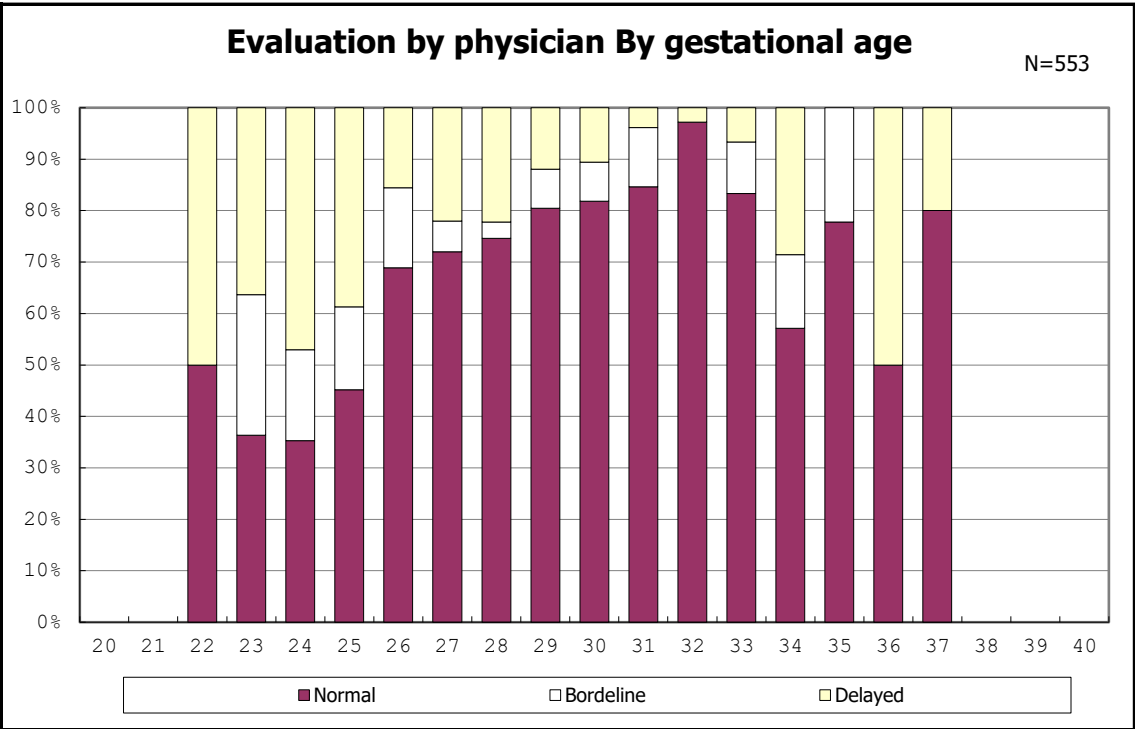


among infants with DQ measured by other than K scale

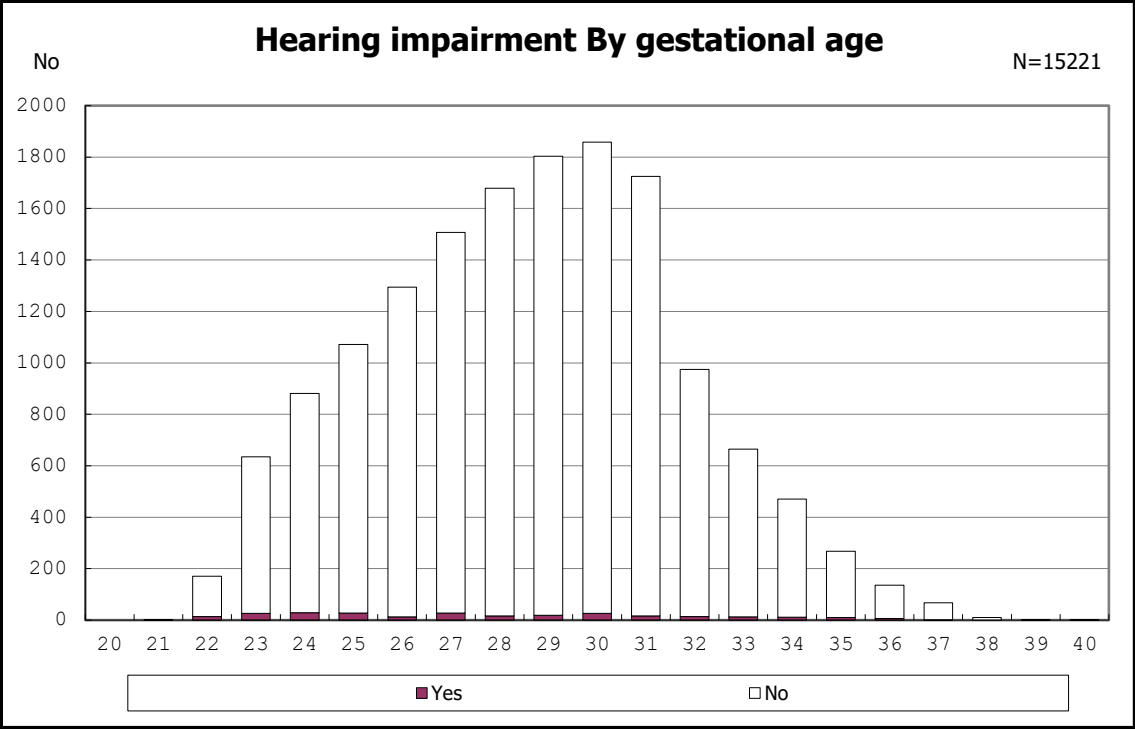




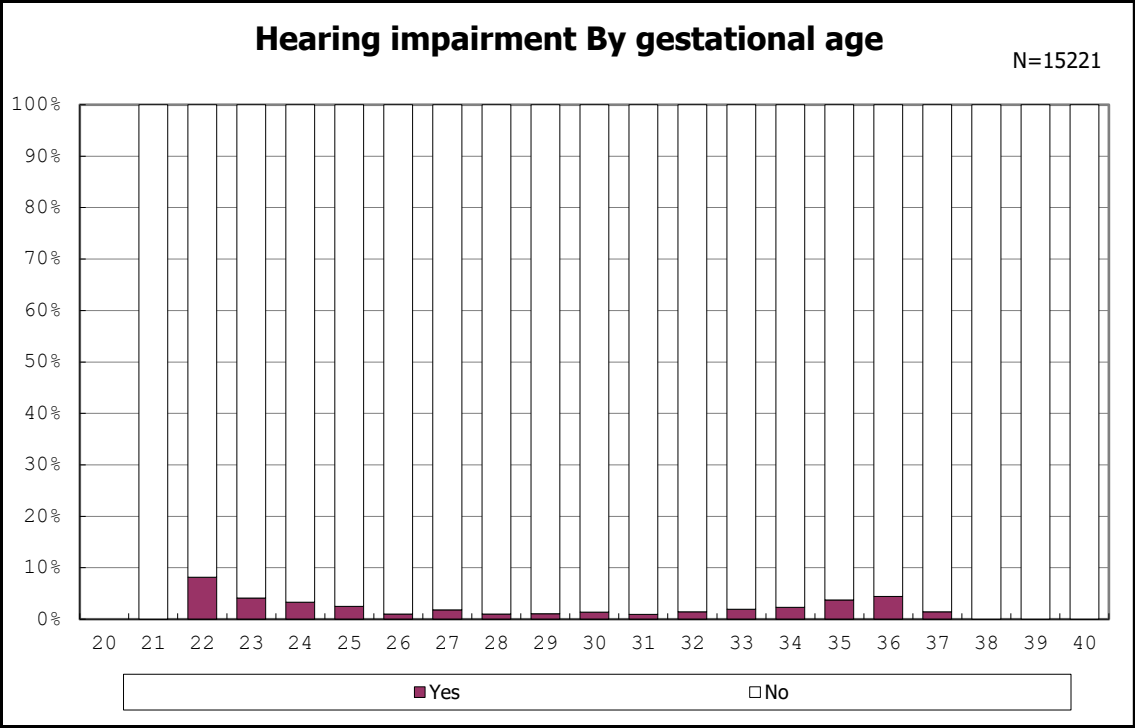
among infants with DQ measured by other than K scale



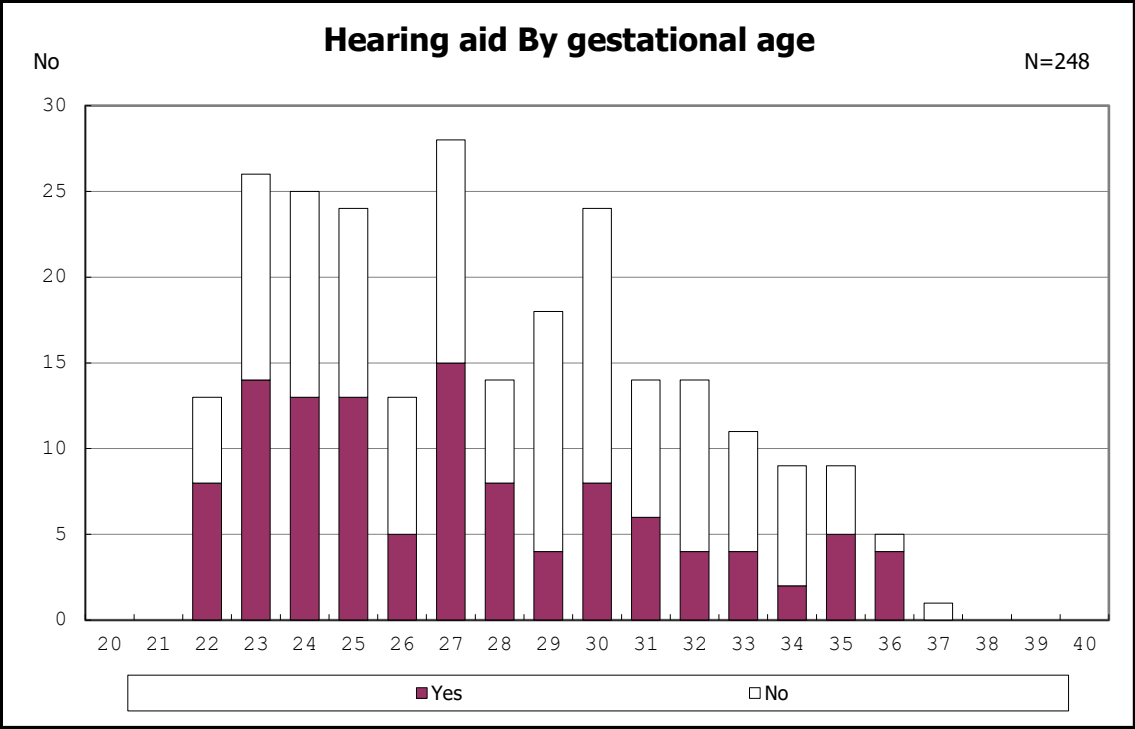
among infants with DQ measured by other than K scale



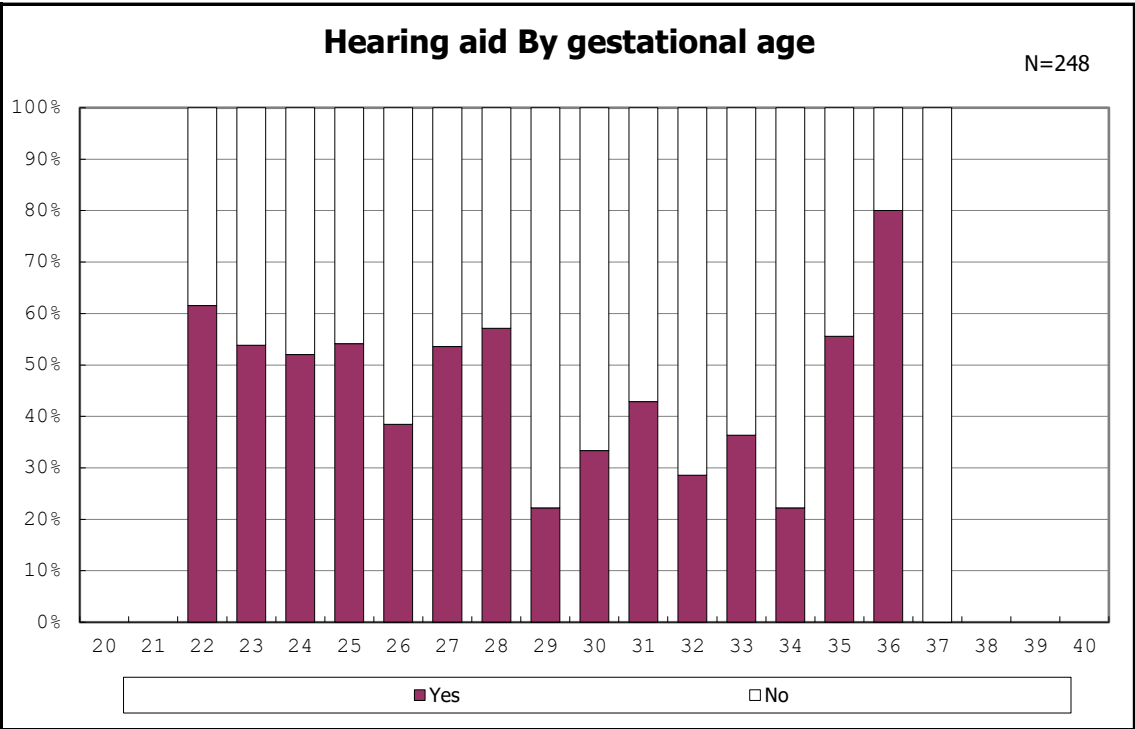
among infants with followup at 3 years of age



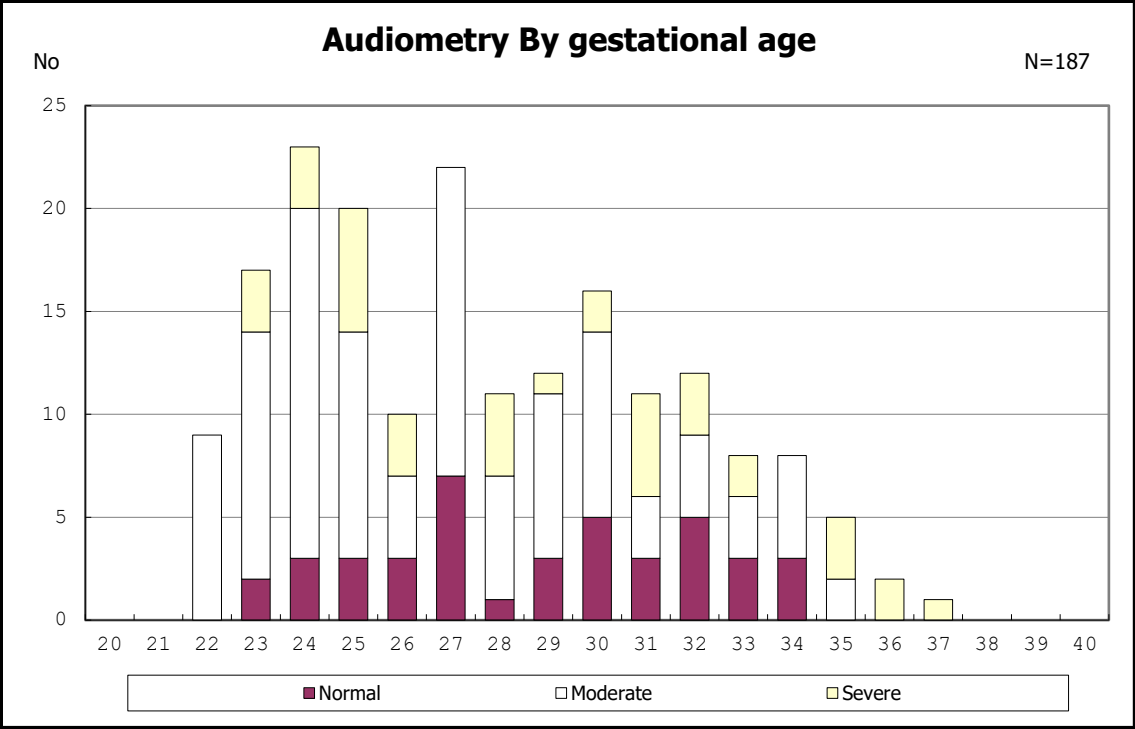
among infants with followup at 3 years of age



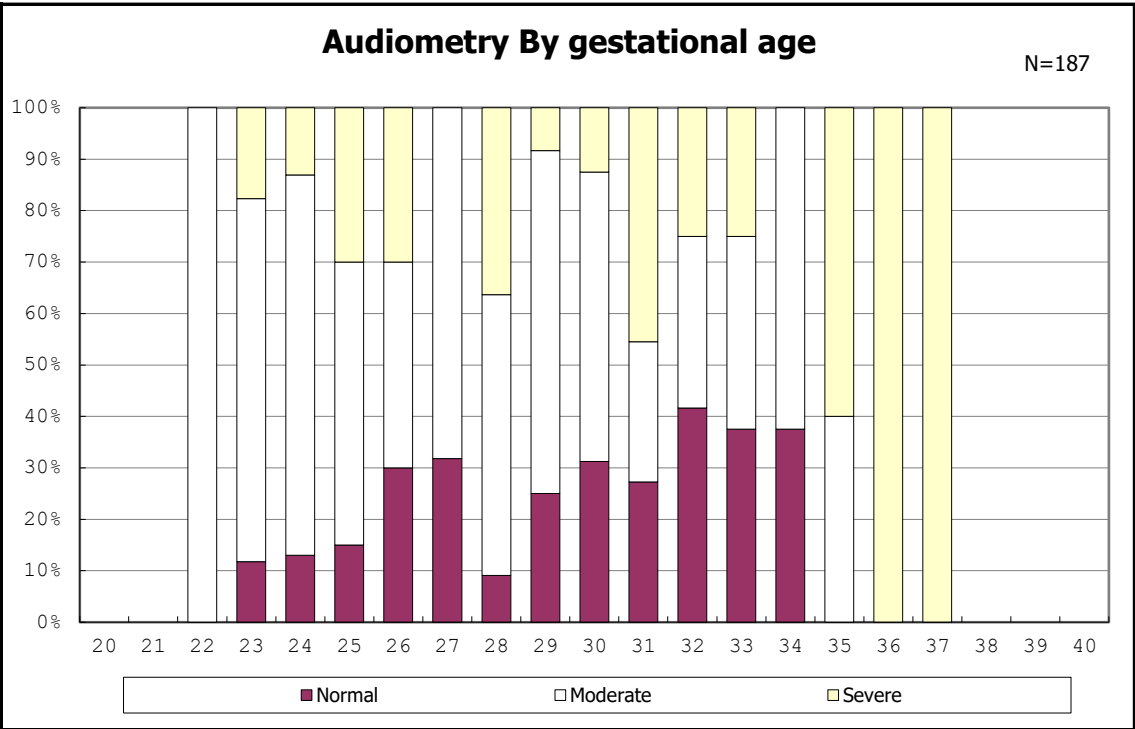
among infants with hearing impairment



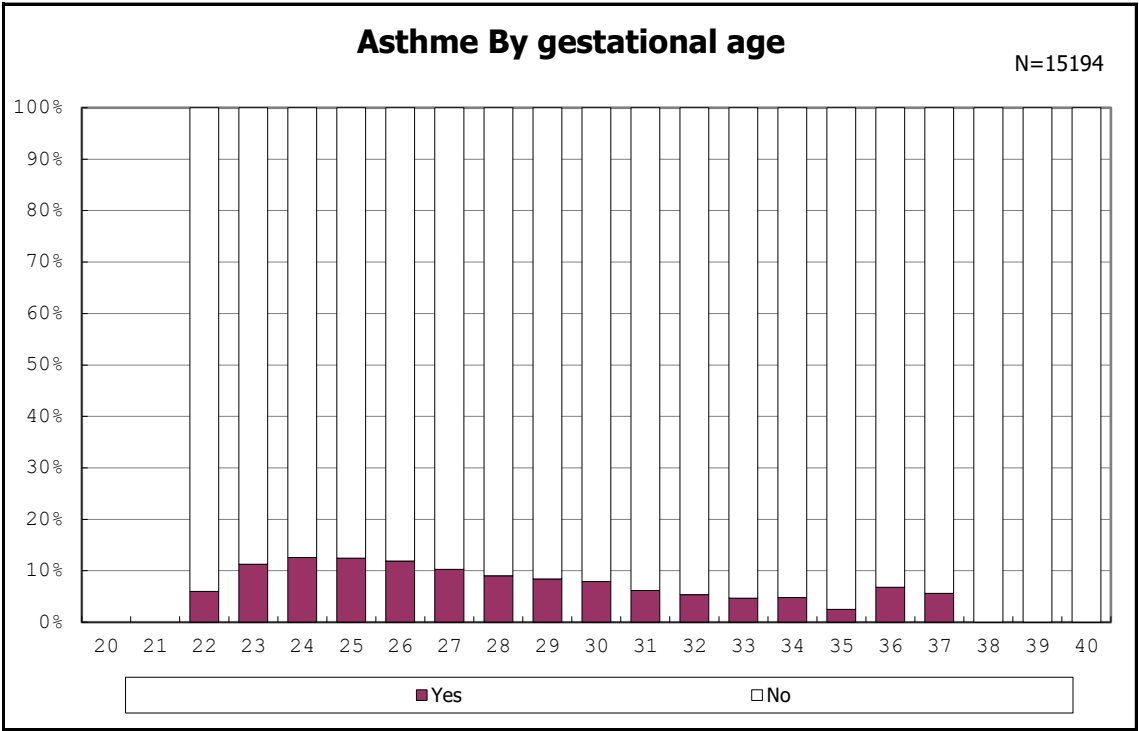
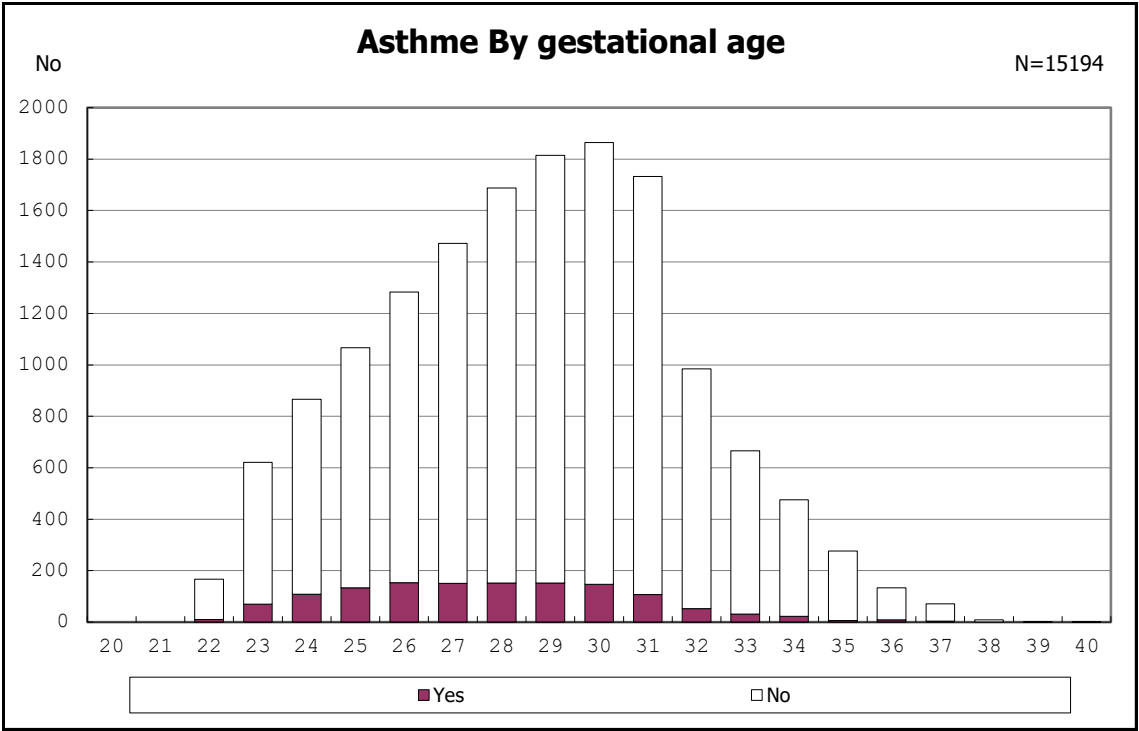
among infants with hearing impairment

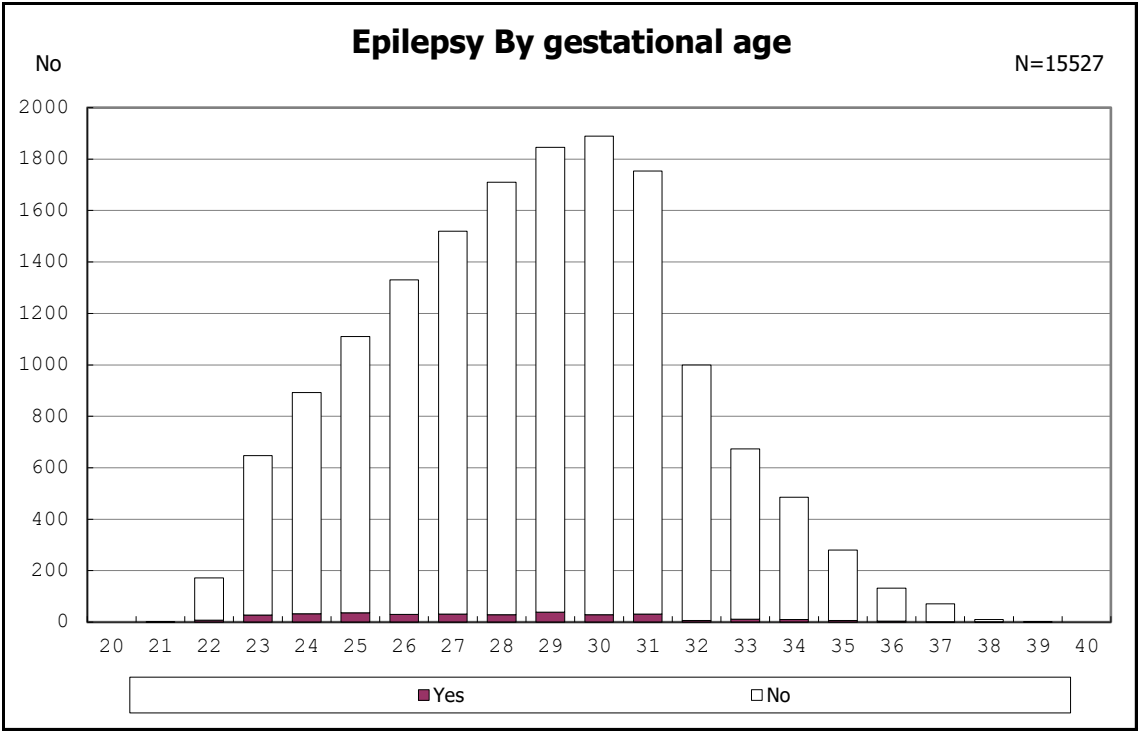


among infants with hearing impairment

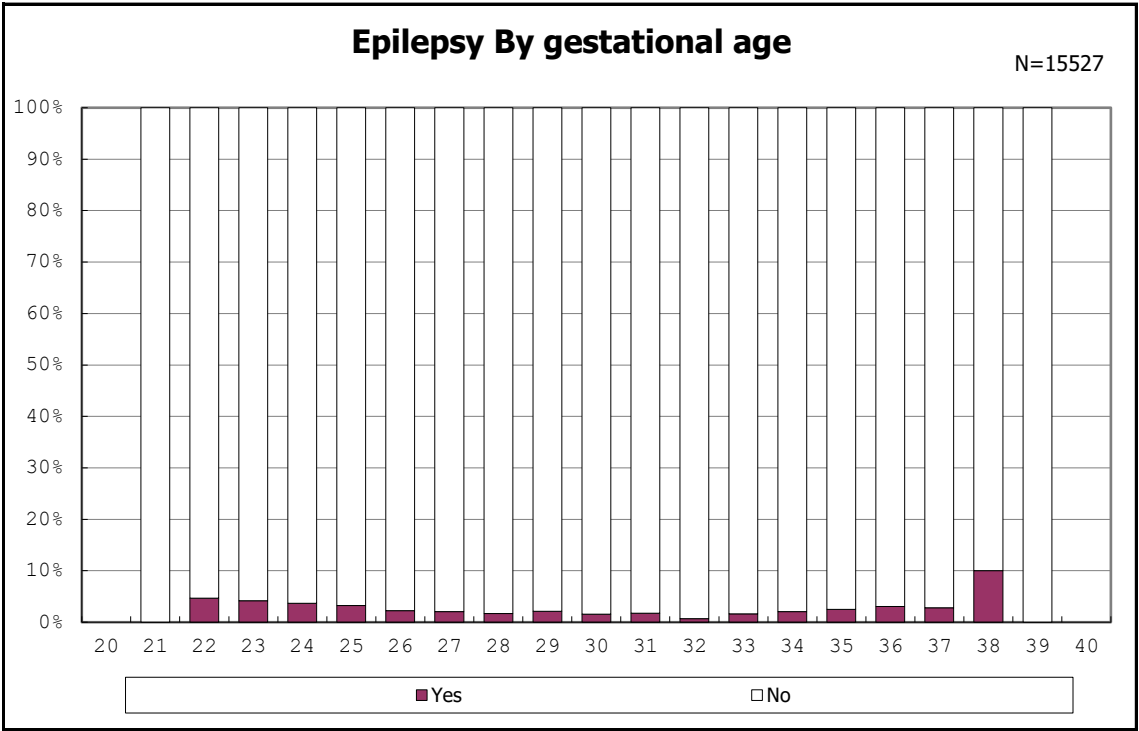


among infants with hearing impairment

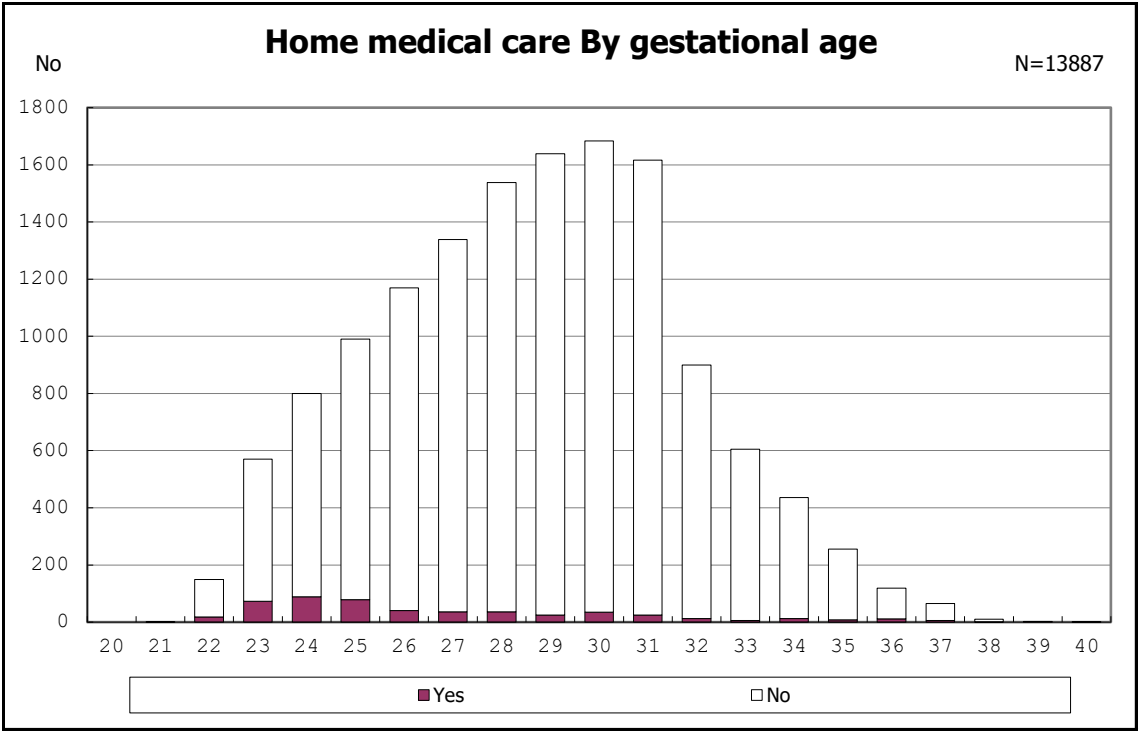




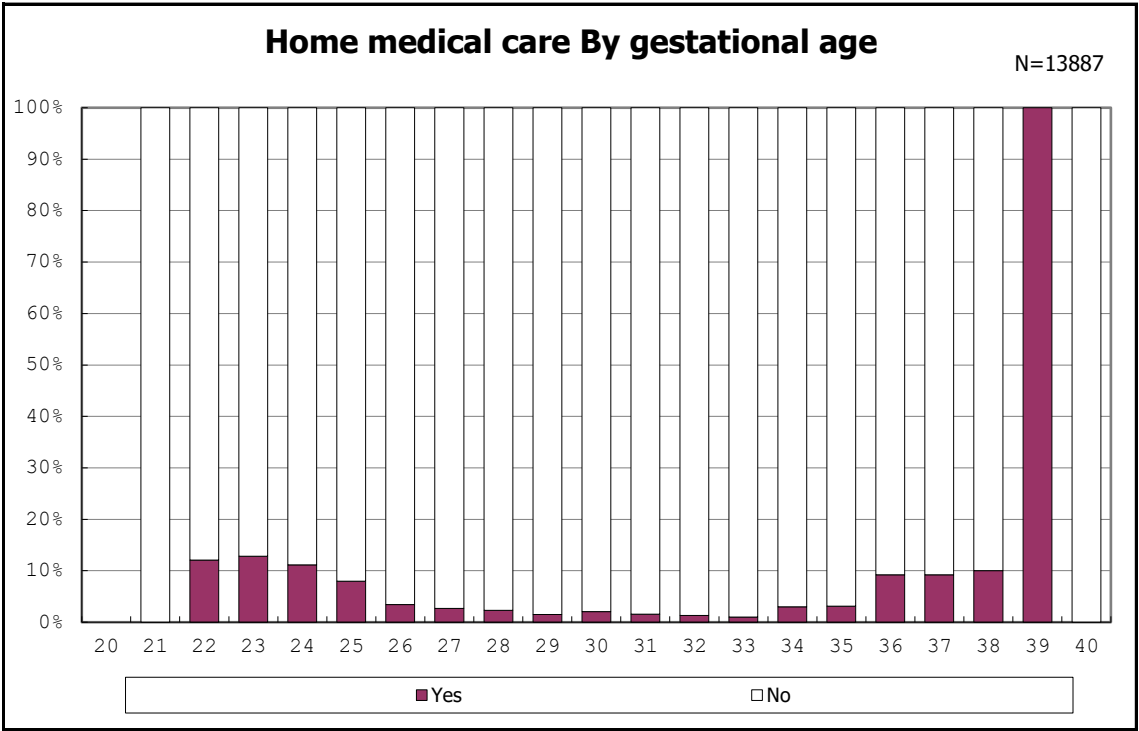
among infants with followup at 3 years of age



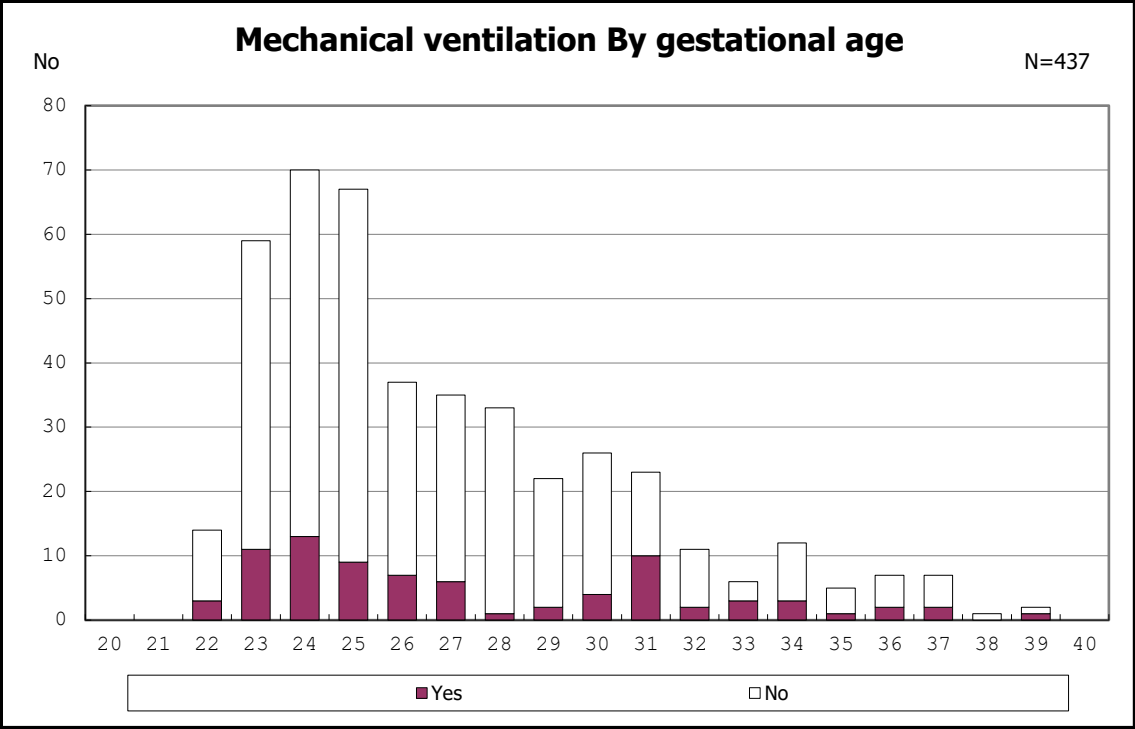
among infants with followup at 3 years of age



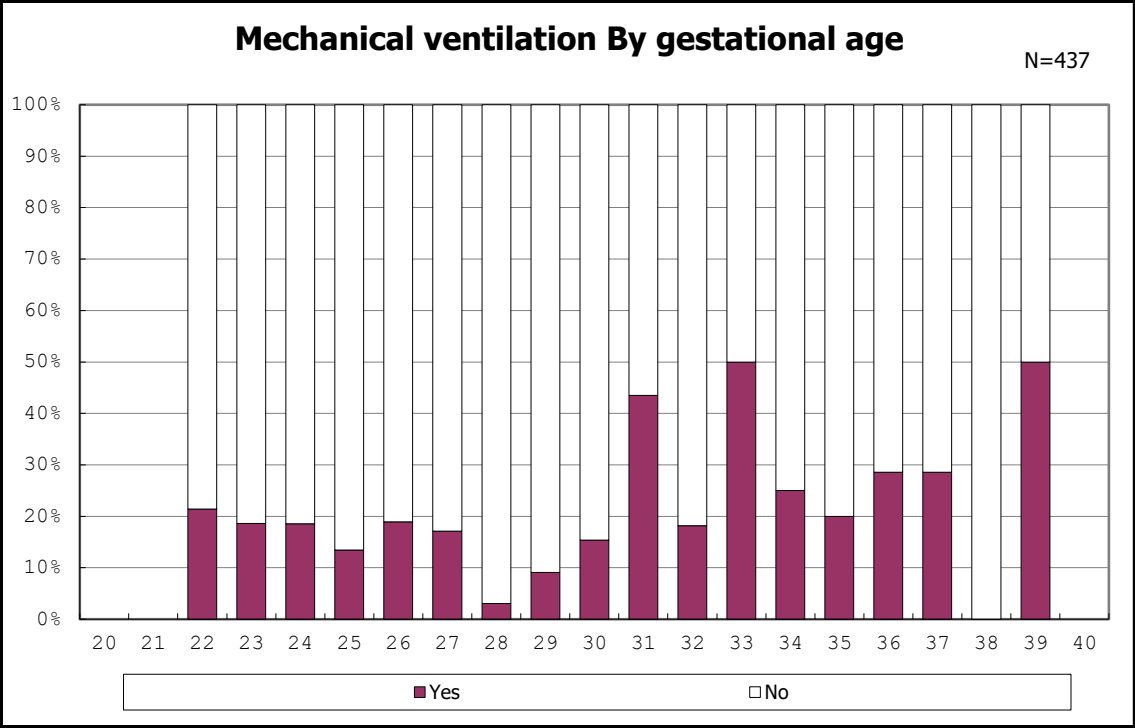
among infants with followup at 3 years of age



among infants with followup at 3 years of age

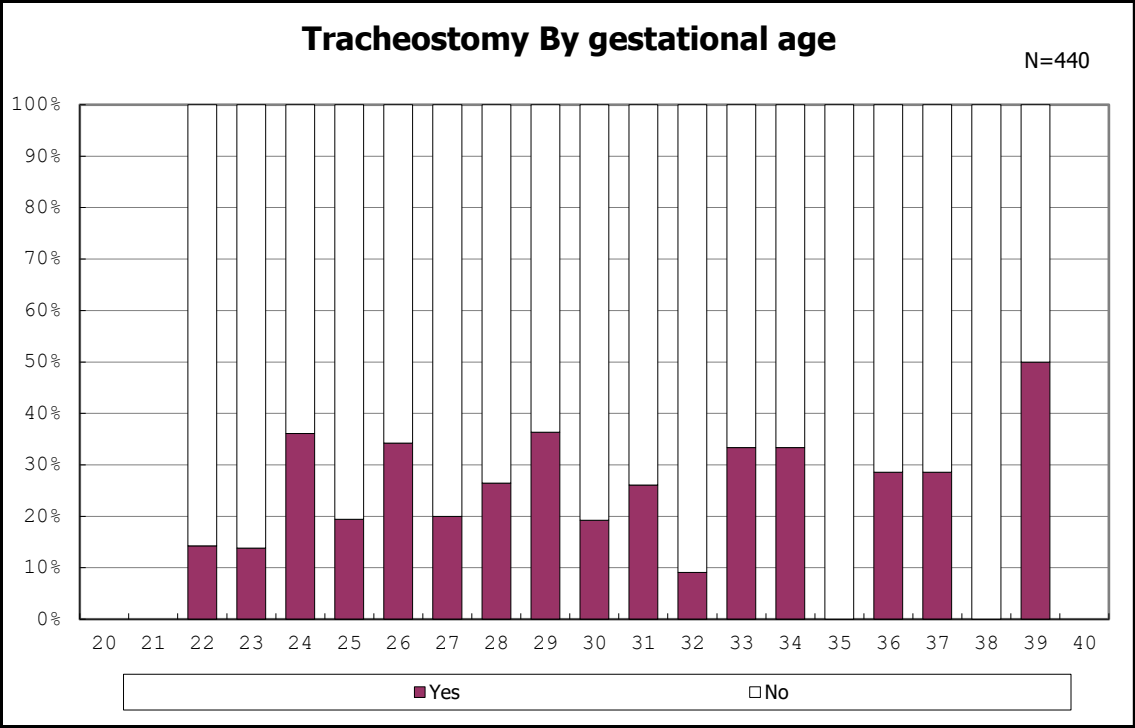
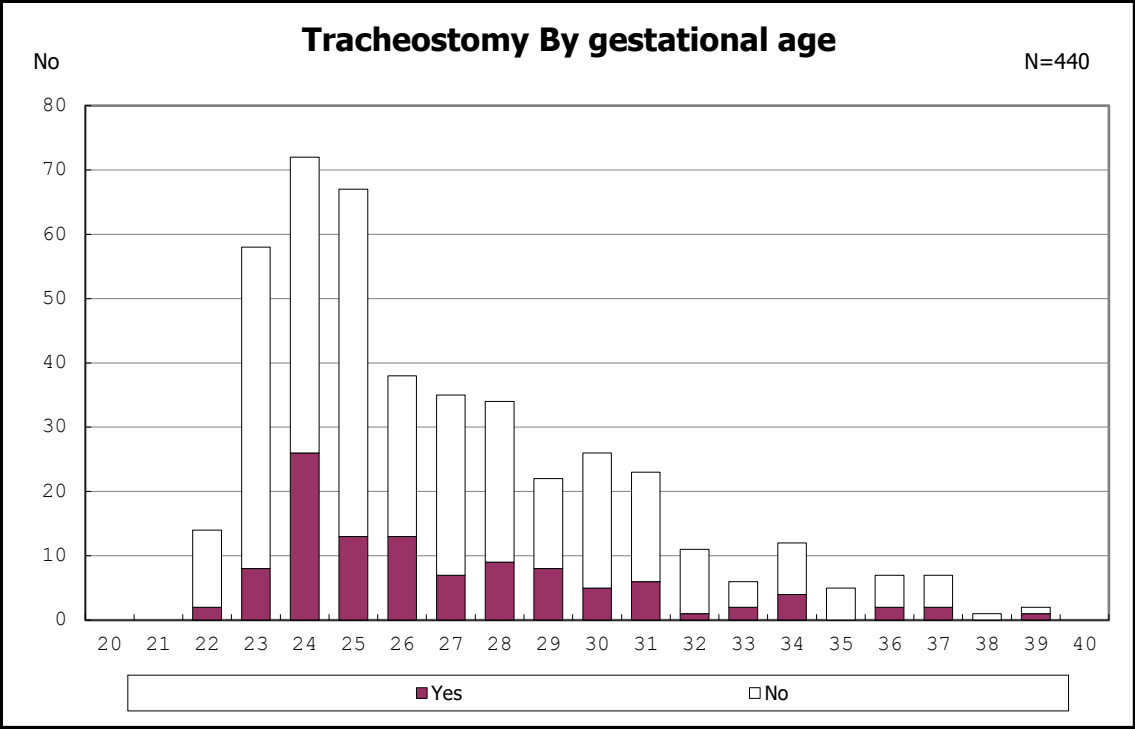


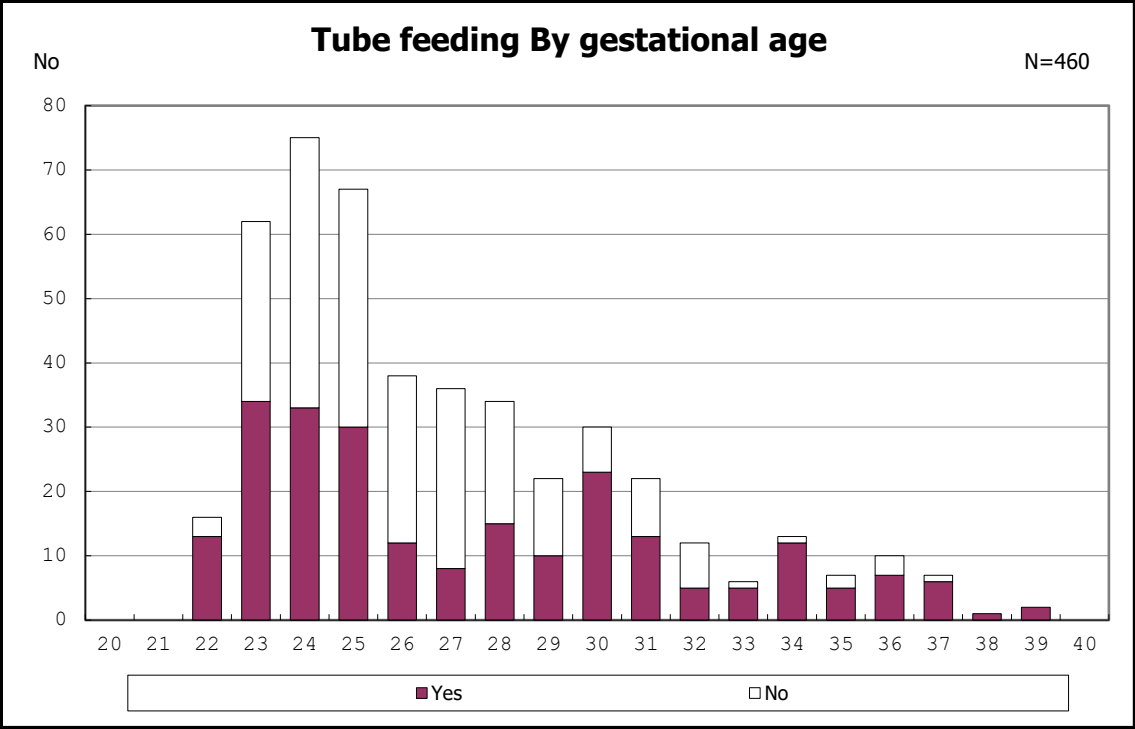
among infants with home medical care



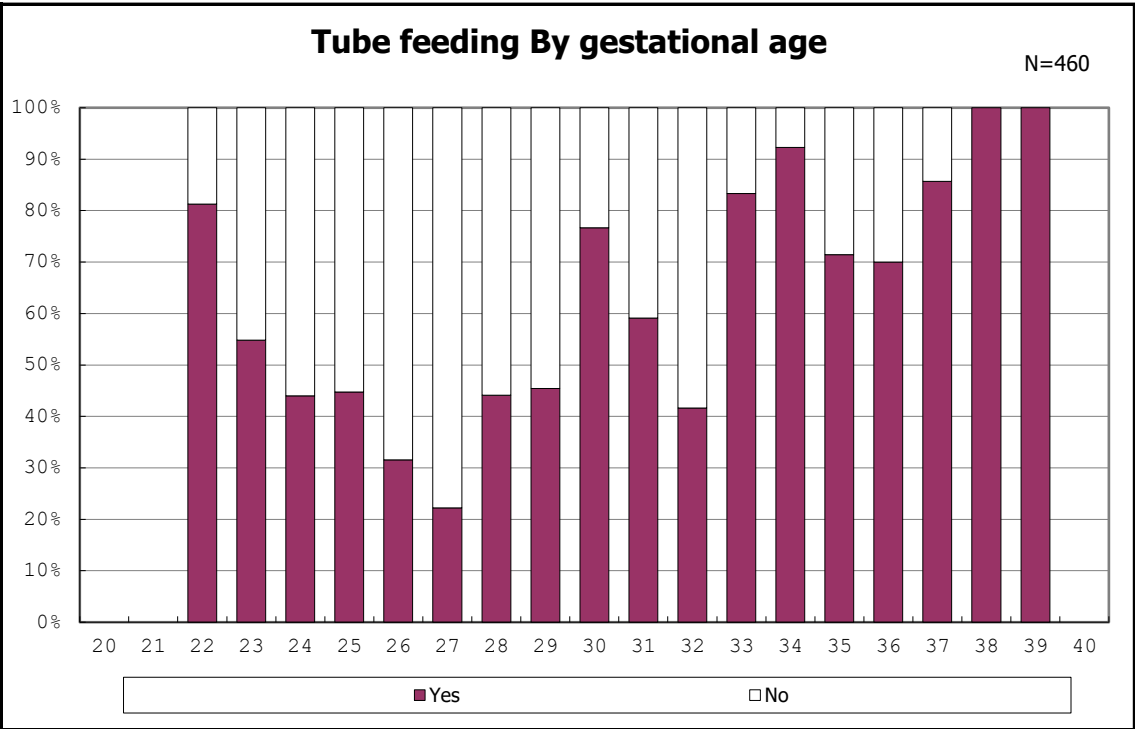
among infants with home medical care



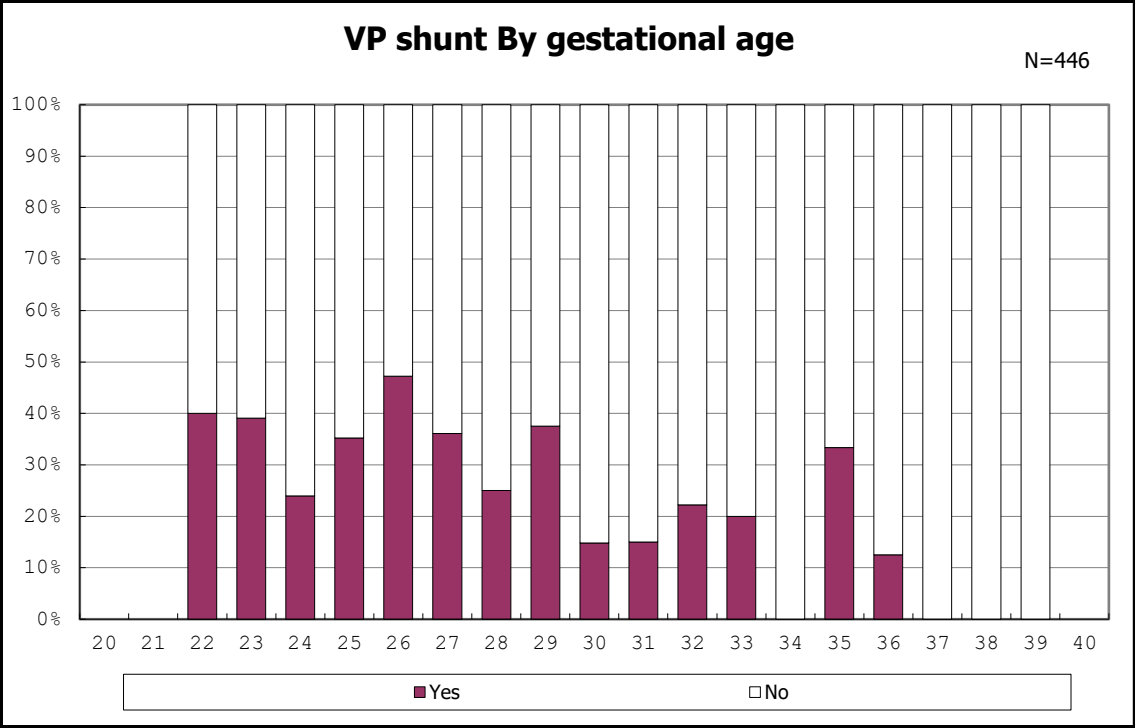
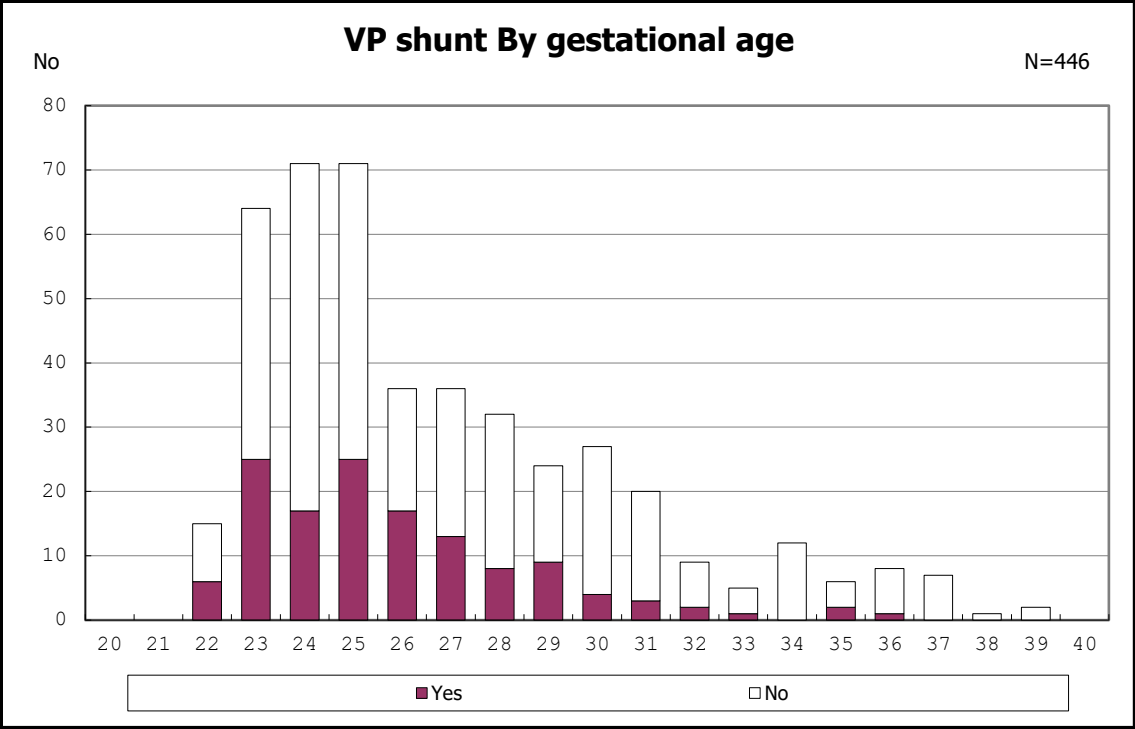


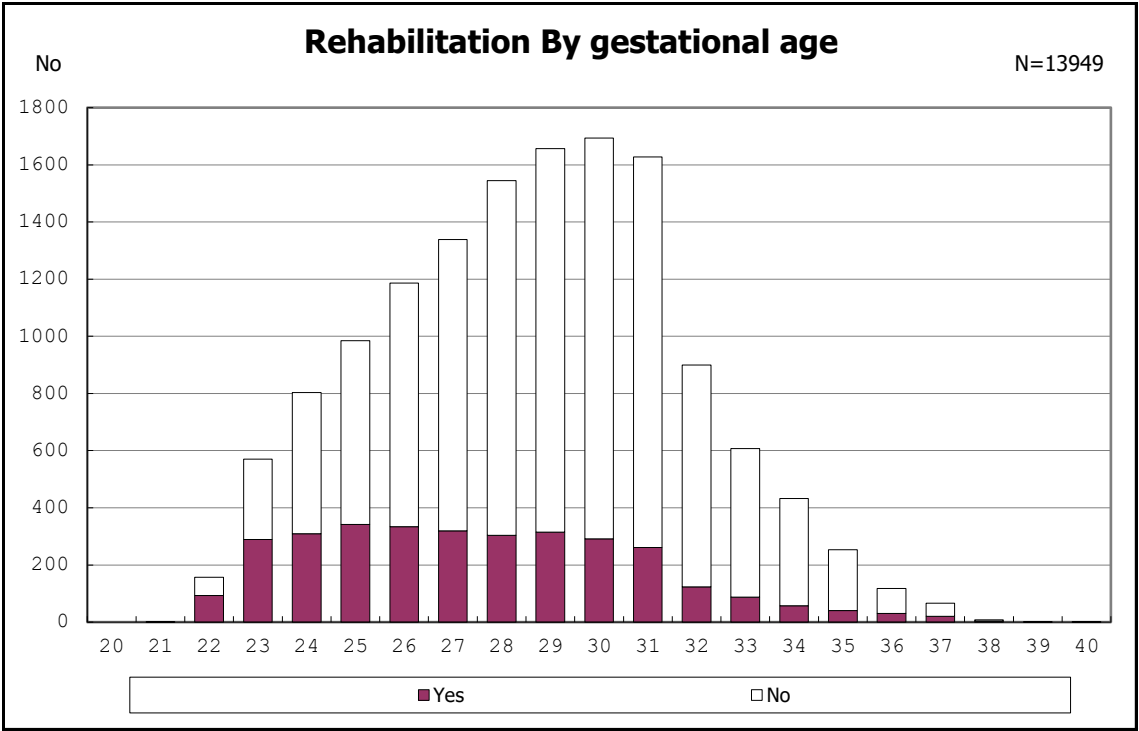


among infants with home medical care

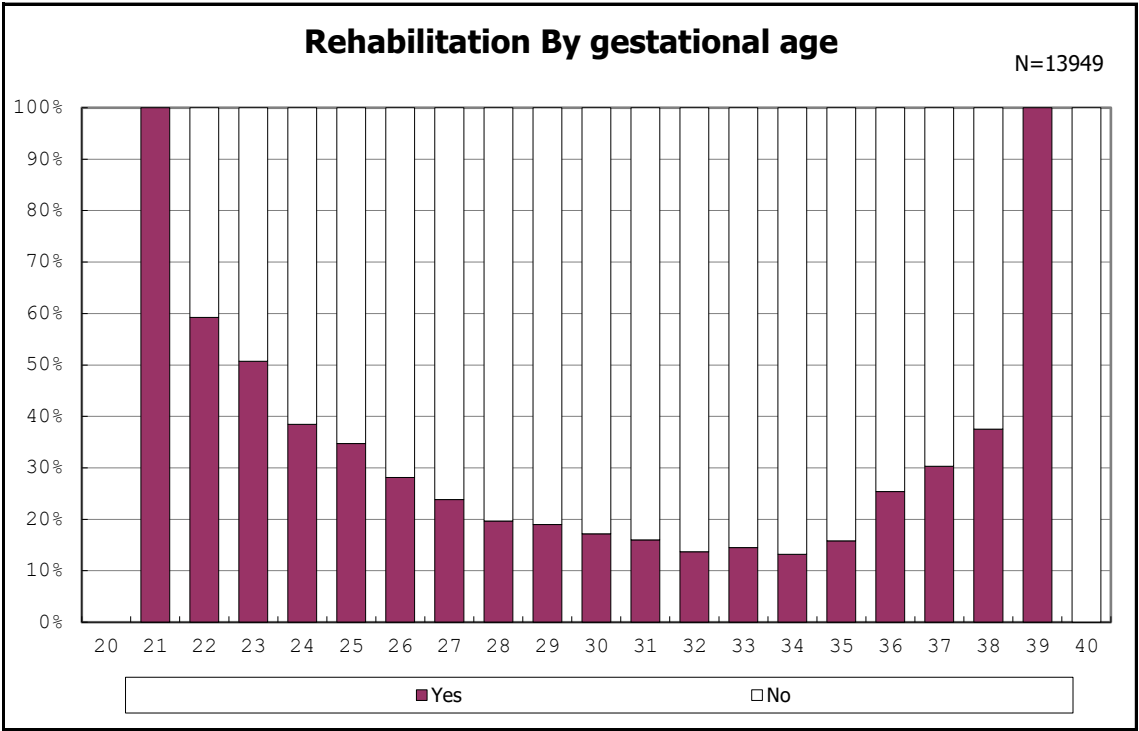


among infants with home medical care

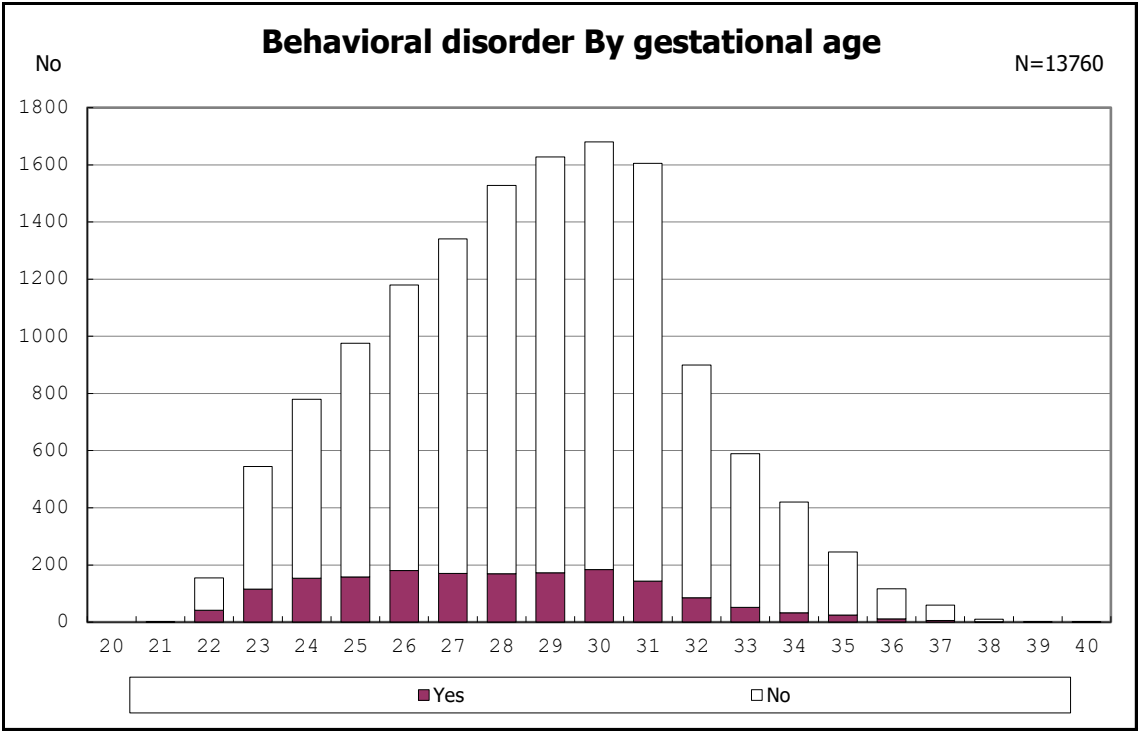




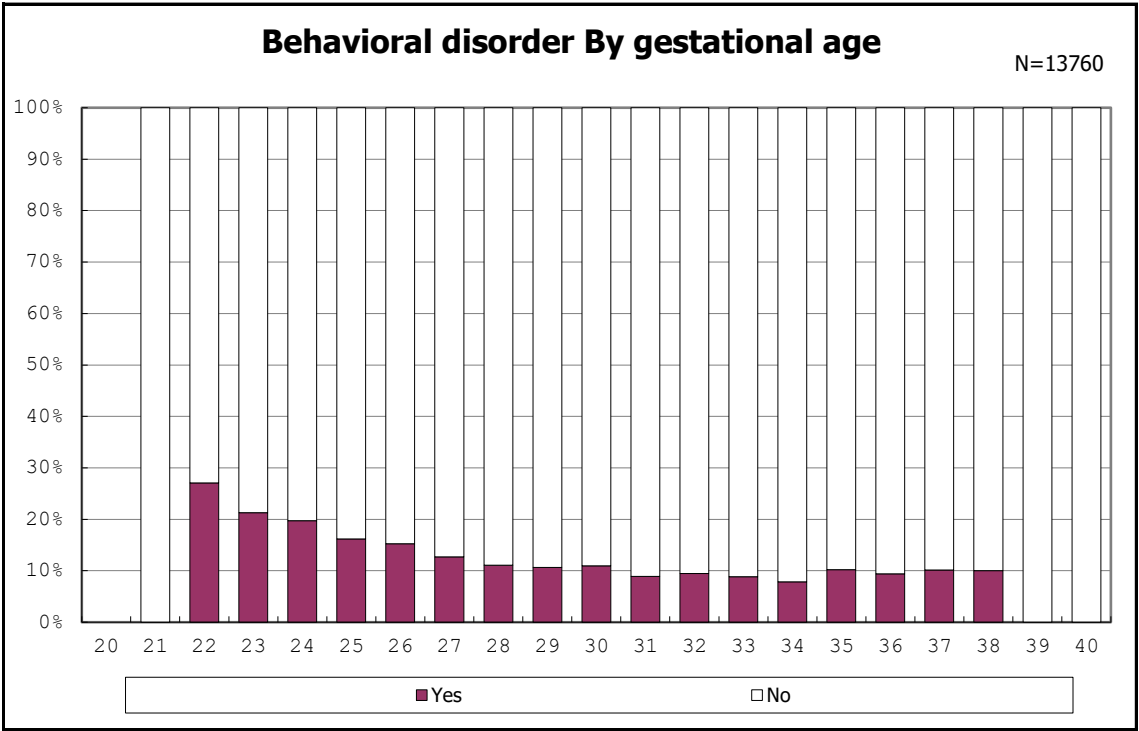
among infants with followup at 3 years of age



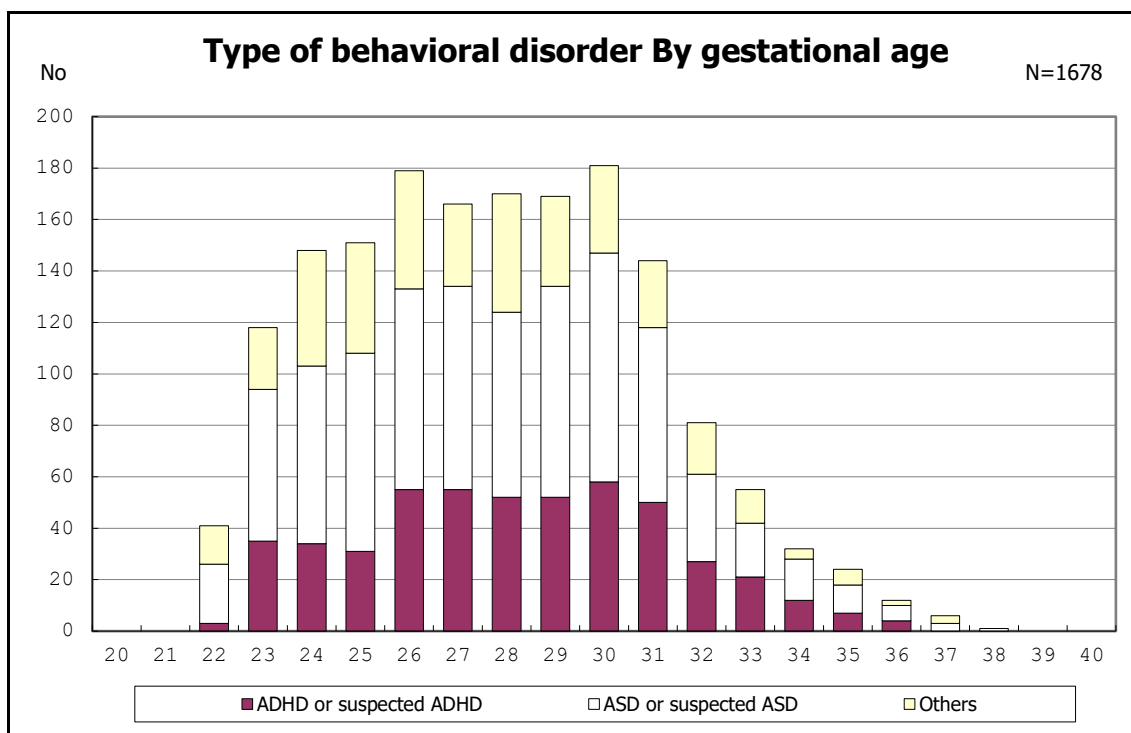
among infants with followup at 3 years of age



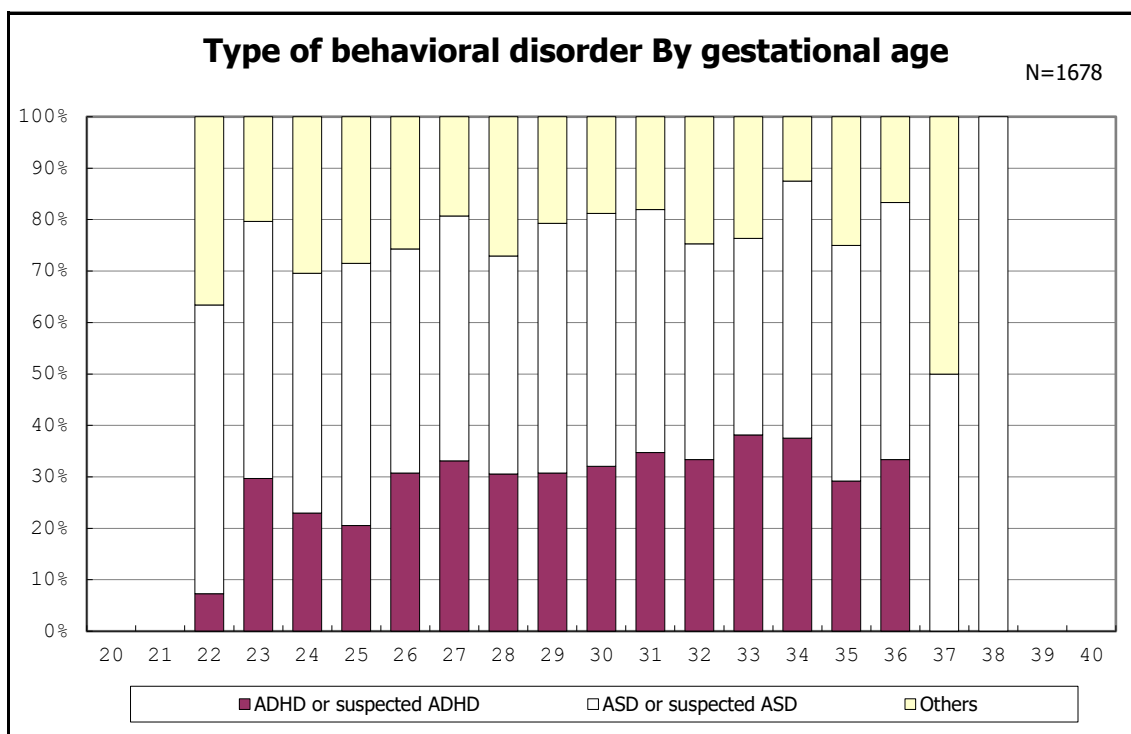
among infants with followup at 3 years of age



among infants with followup at 3 years of age



among infants with followup at 3 years of age



among infants with followup at 3 years of age