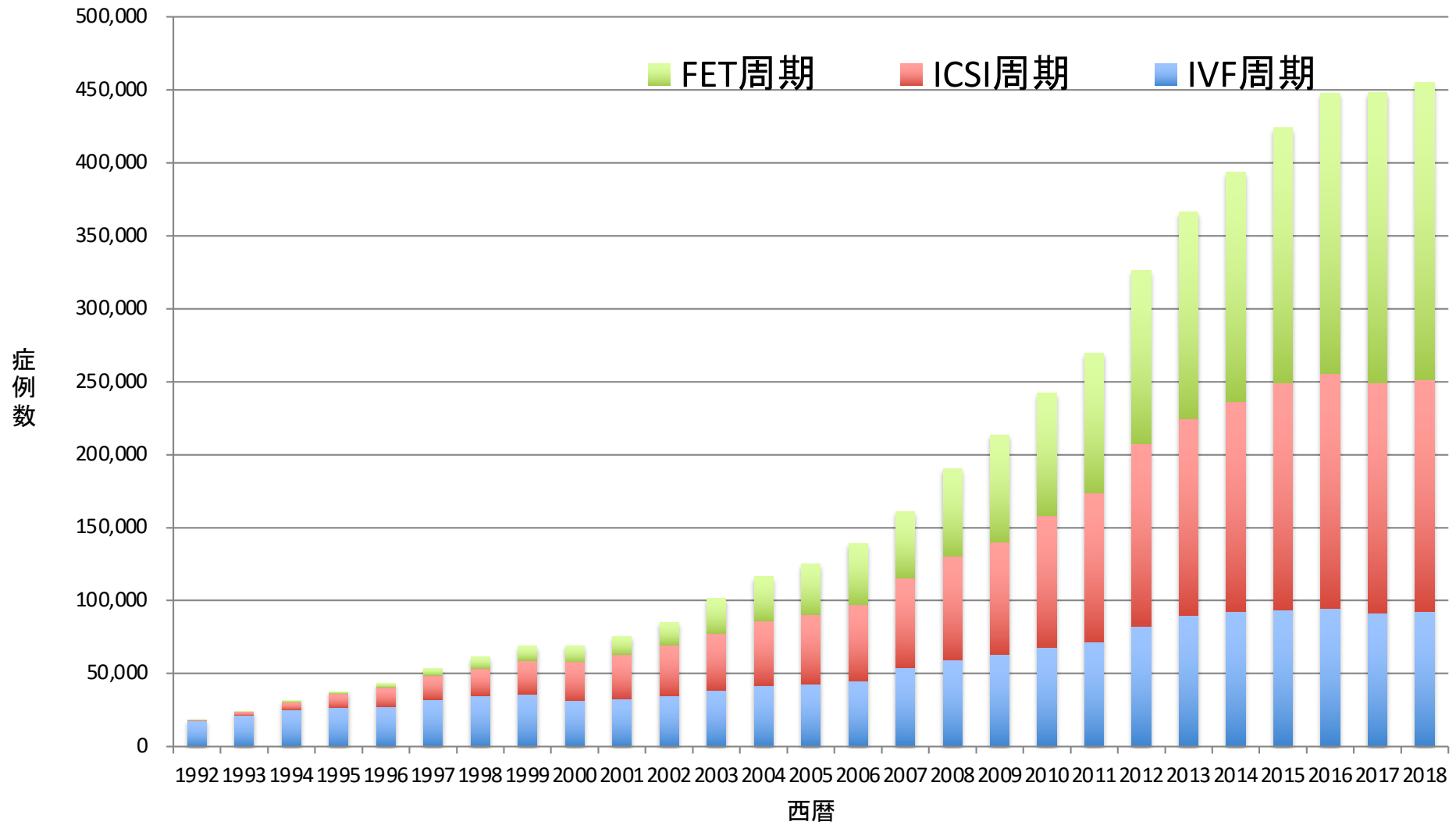
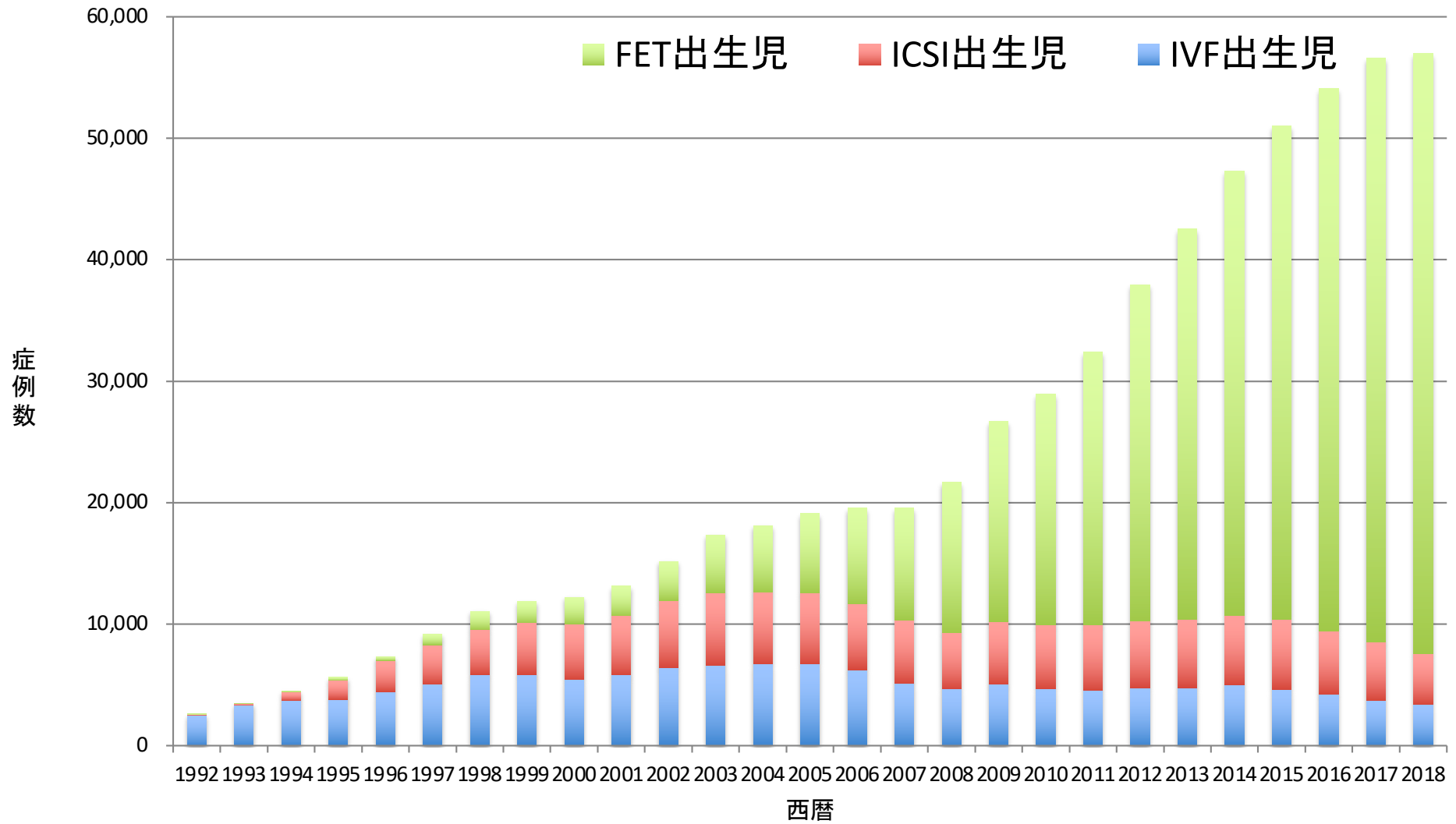


# 年別 治療周期数



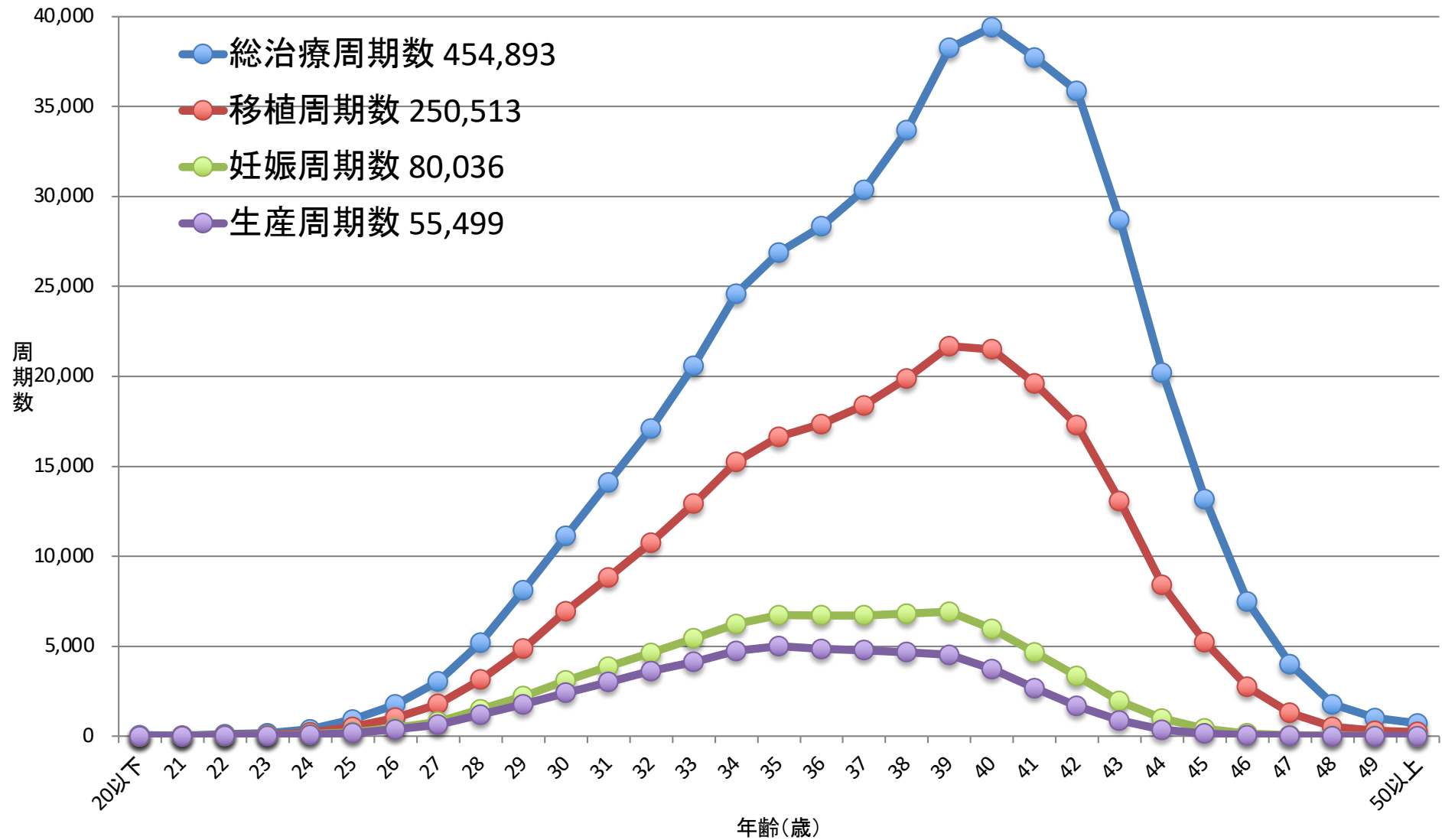
# 年別 出生児数



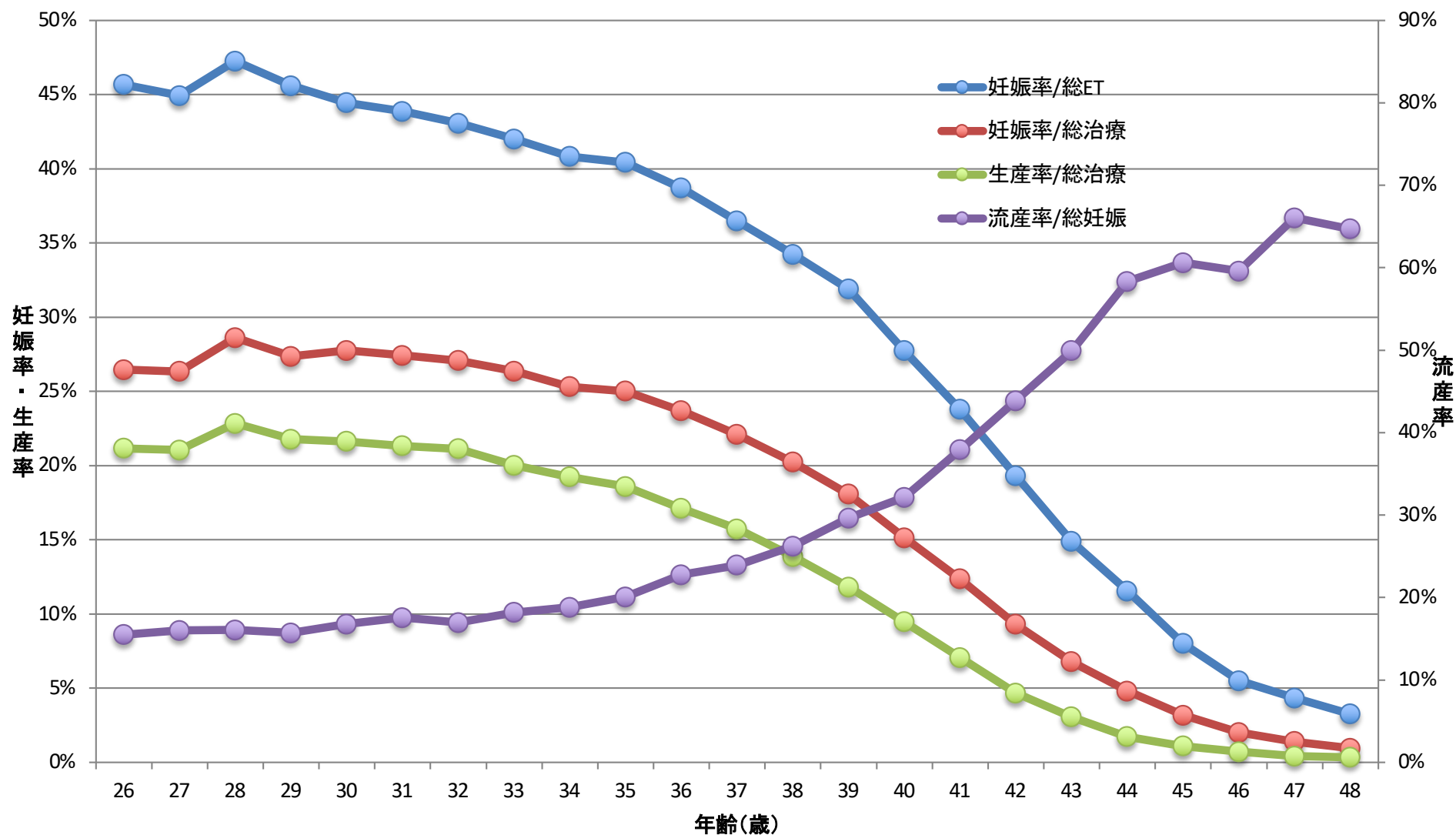
# 年別 周期数

西暦	IVF (GIFT,その他を含む)						ICSI (SPLITを含む)					凍結融解胚 (卵)				
	治療周期数	採卵周期数	全凍結周期数	移植周期数	妊娠周期数	出生児数	治療周期数	採卵周期数	全凍結周期数	移植周期数	妊娠周期数	出生児数	治療周期数	移植周期数	妊娠周期数	出生児数
1985	1,195	1,195		862	64	27										
1986	752	752		556	56	16										
1987	1,503	1,503		1,070	135	54										
1988	1,702	1,702		1,665	257	114										
1989	4,218	3,890		2,968	580	446							184	92	7	3
1990	7,405	6,892		5,361	1,178	1,031							160	153	17	17
1991	11,177	10,581		8,473	2,015	1,661							369	352	57	39
1992	17,404	16,381		12,250	2,702	2,525	963	936		524	42	35	553	530	79	66
1993	21,287	20,345		15,565	3,730	3,334	2,608	2,447		1,271	176	149	681	597	86	71
1994	25,157	24,033		18,690	4,069	3,734	5,510	5,339		4,114	759	698	1,303	1,112	179	144
1995	26,648	24,694		18,905	4,246	3,810	9,820	9,054		7,722	1,732	1,579	1,682	1,426	323	298
1996	27,338	26,385		21,492	4,818	4,436	13,438	13,044		11,269	2,799	2,588	2,900	2,676	449	386
1997	32,247	30,733		24,768	5,730	5,060	16,573	16,376		14,275	3,495	3,249	5,208	4,958	1,086	902
1998	34,929	33,670		27,436	6,255	5,851	18,657	18,266		15,505	3,952	3,701	8,132	7,643	1,748	1,567
1999	36,085	34,290		27,455	6,812	5,870	22,984	22,350		18,592	4,702	4,247	9,950	9,093	2,198	1,812
2000	31,334	29,907		24,447	6,328	5,447	26,712	25,794		21,067	5,240	4,582	11,653	10,719	2,660	2,245
2001	32,676	31,051		25,143	6,749	5,829	30,369	29,309		23,058	5,924	4,862	13,034	11,888	3,080	2,467
2002	34,953	33,849		26,854	7,767	6,443	34,824	33,823		25,866	6,775	5,486	15,887	14,759	4,094	3,299
2003	38,575	36,480		28,214	8,336	6,608	38,871	36,663		27,895	7,506	5,994	24,459	19,641	6,205	4,798
2004	41,619	39,656		29,090	8,542	6,709	44,698	43,628		29,946	7,768	5,921	30,287	24,422	7,606	5,538
2005	42,822	40,471		29,337	8,893	6,706	47,579	45,388		30,983	8,019	5,864	35,069	28,743	9,396	6,542
2006	44,778	42,248		29,440	8,509	6,256	52,539	49,854		32,509	7,904	5,401	42,171	35,804	11,798	7,930
2007	53,873	52,165	7,626	28,228	7,416	5,144	61,813	60,294	11,541	34,032	7,784	5,194	45,478	43,589	13,965	9,257
2008	59,148	57,217	10,139	29,124	6,897	4,664	71,350	69,864	15,390	34,425	7,017	4,615	60,115	57,846	18,597	12,425
2009	63,083	60,754	11,800	28,559	6,891	5,046	76,790	75,340	19,046	35,167	7,330	5,180	73,927	71,367	23,216	16,454
2010	67,714	64,966	13,843	27,905	6,556	4,657	90,677	88,822	24,379	37,172	7,699	5,277	83,770	81,300	27,382	19,011
2011	71,422	68,651	16,202	27,284	6,341	4,546	102,473	100,518	30,773	38,098	7,601	5,415	95,764	92,782	31,721	22,465
2012	82,108	79,434	20,627	29,693	6,703	4,740	125,229	122,962	41,943	40,829	7,947	5,498	119,089	116,176	39,106	27,715
2013	89,950	87,104	25,085	30,164	6,817	4,776	134,871	134,871	49,316	41,150	8,027	5,630	141,335	138,249	45,392	32,148
2014	92,269	89,397	27,624	30,414	6,970	5,025	144,247	141,888	55,851	41,437	8,122	5,702	157,229	153,977	51,458	36,595
2015	93,614	91,079	30,498	28,858	6,478	4,629	155,797	153,639	63,660	41,396	8,169	5,761	174,740	171,495	56,888	40,611
2016	94,566	92,185	34,188	26,182	5,903	4,266	161,262	159,214	70,387	38,315	7,324	5,166	191,962	188,338	62,749	44,678
2017	91,516	89,447	36,441	22,423	5,182	3,731	157,709	155,758	74,200	33,297	6,757	4,826	198,985	195,559	67,255	48,060
2018	92,552	90,376	38,882	20,894	4,755	3,402	158,859	157,026	79,496	29,569	5,886	4,194	203,482	200,050	69,395	49,383

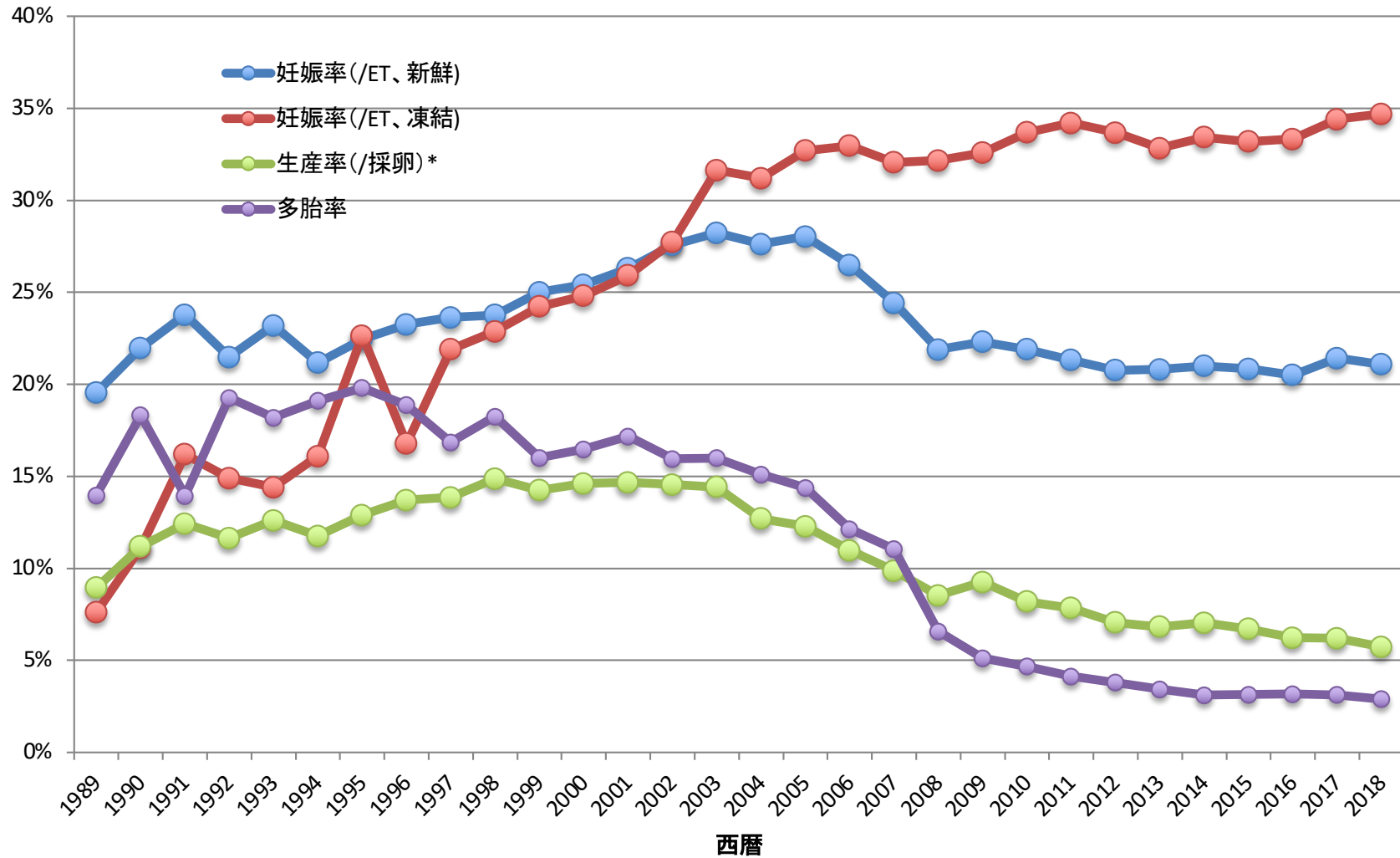
# ART治療周期数 2018



# ART妊娠率・生産率・流産率 2018



# 年別 妊娠率・生産率・多胎率



\* 2007年以降は全胚凍結周期を除いて表示

# 2018

年齢別	総治療周期数	総治療周期数 (全凍結周期 をのぞく)	移植周期数	妊娠周期数	多胎数 (胎嚢確認時)	流産数	生産周期数	妊娠率/総ET	妊娠率/総治 療	生産率/総治 療	流産率/総妊 娠	多胎率
20歳以下	49	11	6	3	0	0	3	50.0%	6.1%	6.1%	0.0%	0.0%
21	29	14	8	1	0	0	1	12.5%	3.4%	3.4%	0.0%	0.0%
22	103	58	48	22	2	3	16	45.8%	21.4%	15.5%	13.6%	9.5%
23	155	98	79	35	2	5	26	44.3%	22.6%	16.8%	14.3%	5.7%
24	384	243	205	98	1	15	82	47.8%	25.5%	21.4%	15.3%	1.0%
25	926	605	514	231	0	33	177	44.9%	24.9%	19.1%	14.3%	0.0%
26	1757	1177	1018	465	18	72	372	45.7%	26.5%	21.2%	15.5%	4.0%
27	3037	2034	1780	800	13	128	639	44.9%	26.3%	21.0%	16.0%	1.7%
28	5199	3558	3148	1488	32	239	1188	47.3%	28.6%	22.9%	16.1%	2.2%
29	8098	5592	4859	2216	74	348	1763	45.6%	27.4%	21.8%	15.7%	3.4%
30	11128	7826	6951	3090	92	518	2407	44.5%	27.8%	21.6%	16.8%	3.0%
31	14116	10080	8826	3872	100	680	3011	43.9%	27.4%	21.3%	17.6%	2.6%
32	17101	12329	10755	4632	117	786	3615	43.1%	27.1%	21.1%	17.0%	2.6%
33	20594	14940	12921	5428	135	987	4122	42.0%	26.4%	20.0%	18.2%	2.6%
34	24600	17902	15257	6229	176	1171	4732	40.8%	25.3%	19.2%	18.8%	2.9%
35	26892	19745	16639	6727	211	1350	5002	40.4%	25.0%	18.6%	20.1%	3.2%
36	28339	20772	17346	6714	252	1528	4848	38.7%	23.7%	17.1%	22.8%	3.8%
37	30377	22281	18393	6711	197	1606	4778	36.5%	22.1%	15.7%	23.9%	3.0%
38	33679	24741	19893	6813	217	1787	4670	34.2%	20.2%	13.9%	26.2%	3.3%
39	38256	28112	21684	6917	203	2049	4521	31.9%	18.1%	11.8%	29.6%	3.0%
40	39410	29312	21510	5969	162	1918	3733	27.7%	15.1%	9.5%	32.1%	2.8%
41	37736	28098	19608	4664	126	1768	2665	23.8%	12.4%	7.1%	37.9%	2.8%
42	35860	26763	17285	3339	91	1465	1674	19.3%	9.3%	4.7%	43.9%	2.8%
43	28715	21827	13072	1946	57	972	877	14.9%	6.8%	3.1%	49.9%	3.0%
44	20212	15637	8397	970	29	566	350	11.6%	4.8%	1.7%	58.4%	3.1%
45	13187	10438	5235	419	5	254	145	8.0%	3.2%	1.1%	60.6%	1.2%
46	7480	6079	2740	151	2	90	54	5.5%	2.0%	0.7%	59.6%	1.4%
47	3994	3316	1289	56	1	37	17	4.3%	1.4%	0.4%	66.1%	1.9%
48	1776	1467	522	17	1	11	6	3.3%	1.0%	0.3%	64.7%	6.3%
49	999	850	301	8	0	5	3	2.7%	0.8%	0.3%	62.5%	0.0%
50歳以上	705	610	224	5	0	1	2	2.2%	0.7%	0.3%	20.0%	0.0%
合計	454893	336515	250513	80036	2316	20392	55499	31.9%	17.6%	12.2%	25.5%	3.0%

# 年別 妊娠率・生産率・多胎率

西暦	妊娠率 (/ET、新鮮)	妊娠率 (/ET、凍結)	生産率 (/採卵) *	多胎率
1989	19.5%	7.6%	8.9%	14.0%
1990	22.0%	11.1%	11.2%	18.3%
1991	23.8%	16.2%	12.4%	13.9%
1992	21.5%	14.9%	11.6%	19.3%
1993	23.2%	14.4%	12.6%	18.2%
1994	21.2%	16.1%	11.8%	19.1%
1995	22.5%	22.7%	12.9%	19.8%
1996	23.3%	16.8%	13.7%	18.9%
1997	23.6%	21.9%	13.9%	16.9%
1998	23.8%	22.9%	14.9%	18.2%
1999	25.0%	24.2%	14.2%	16.0%
2000	25.4%	24.8%	14.6%	16.5%
2001	26.3%	25.9%	14.7%	17.2%
2002	27.6%	27.7%	14.6%	15.9%
2003	28.2%	31.6%	14.4%	16.0%
2004	27.6%	31.2%	12.7%	15.1%
2005	28.0%	32.7%	12.3%	14.4%
2006	26.5%	33.0%	11.0%	12.1%
2007	24.4%	32.1%	9.9%	11.0%
2008	21.9%	32.2%	8.5%	6.6%
2009	22.3%	32.6%	9.3%	5.1%
2010	21.9%	33.7%	8.2%	4.7%
2011	21.3%	34.2%	7.8%	4.1%
2012	20.8%	33.7%	7.1%	3.8%
2013	20.8%	32.8%	6.8%	3.4%
2014	21.0%	33.4%	7.0%	3.1%
2015	20.8%	33.2%	6.7%	3.1%
2016	20.5%	33.3%	6.2%	3.2%
2017	21.4%	34.4%	6.2%	3.1%
2018	21.1%	34.7%	5.7%	2.9%